



 Habitat for Humanity®

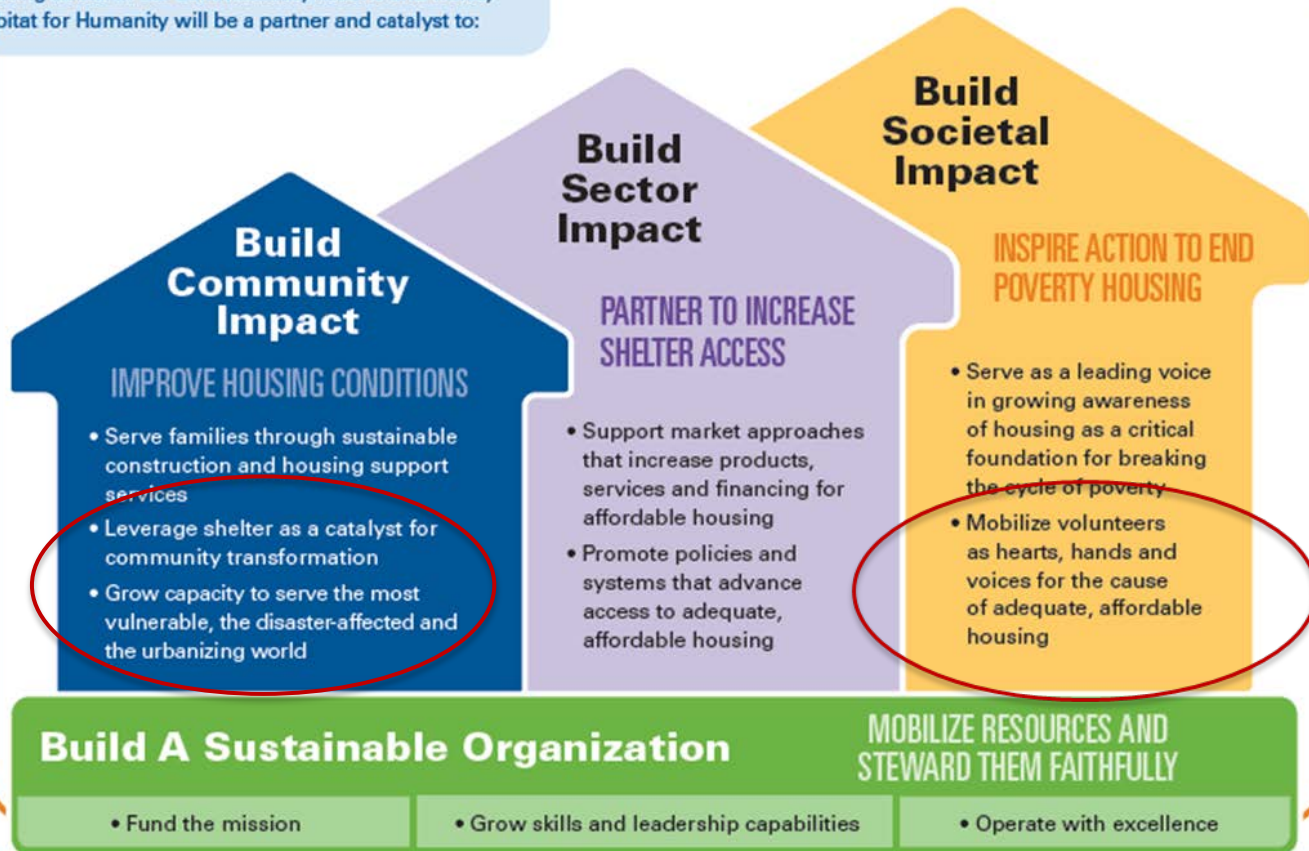
aging in place

By 2030 one in five
Americans will be at
least 65 years old.

We build *strength, stability* and *self-reliance* through *shelter*.

OUR GOALS AND OBJECTIVES FOR 2014-18

Seeking to put God's love into action by addressing urgent housing needs in our communities, nations and world, Habitat for Humanity will be a partner and catalyst to:



Vision

All people have the right to age with dignity in their homes and communities.

Mission

Habitat for Humanity and its partners provide products and services that foster safe and livable homes and communities, and that help people of all ages achieve the strength, stability and self-reliance they need to build better lives for themselves.



What are we doing?

Access housing needs for older adults

Provide housing and community-based solutions:



- Home Repairs and Modifications
- Community Projects
- Other Housing Solutions (i.e. ADUs)

Adopt a holistic approach

Partner with local agencies and organizations to respond to other adult needs, i.e. :

- Health
- Transportation
- Mobility
- Food Access



Adhere to Universal Design Standards

Barrier- Free Universal Design

- No Step Entry
- Wide Doorways and Hallways
- Easily Accessible Controls and Switches
- Easy to Use Handles
- One Floor Living



What are we doing (continued)?

Commit to Aging In Place

- Outreach
- Education
- Advocacy



Outcome Evaluation

Determine Impact on the well-being of older adults and their caregivers

- Falls Prevention
- Emergency Room Visits
- Cost Savings
(i.e. Medicaid, Healthcare)
- Quality of Life



FY16 US Household Demographic Information (updated: 12/09/2016)

Construction Types	Housing Interventions	Seniors	Veterans	Disabled	Female HH	Male HH	Under age 18	Jointly (2 or more adults)
New	3202	109	91	313	1638	224	2316	1070
Recycle	392	24	7	44	204	28	253	120
Rehab	604	64	34	84	318	58	369	186
Repair	6094	2639	588	2008	3077	840	1238	1468
Grand Total	10292	2836	720	2449	5237	1150	4176	2844

% of	Housing Interventions	Seniors	Veterans	Disabled	Female HH	Male HH	Under age 18	Jointly (2 or more adults)
New	31%	3%	3%	10%	51%	7%	72%	33%
Recycle	4%	6%	2%	11%	52%	7%	65%	31%
Rehab	6%	11%	6%	14%	53%	10%	61%	31%
Repair	59%	43%	10%	33%	50%	14%	20%	24%
Grand Total	100%	28%	7%	24%	51%	11%	41%	28%

Note: All Habitat homebuyers are 30% - 80% of Area Median Income (AMI)

HH - Head of Household

Key Accessibility Features



- Single Story
 - Keeps living area on one level
- 42” Wide Hallways and Stairways
 - 48” wide is Better
 - Double handrails on stairways
- Smooth, Durable Flooring
 - Surfaces in all traffic areas
- 36” Wide doorways
 - Interior and Exterior
- Zero Step Entryways
 - Including porch, front door and garage
- Zero Step Entry to Shower
- 60” Wide Circular Area
 - Clear floor space in middle of rooms
 - Kitchen
 - Laundry
 - Bathroom
- 18”-24” high electrical outlets
- Rocker-style light switches
- Lever style door and faucet handles
- Accessible storage options

Looking ahead: Outcome evaluation

Short

5% increase in repairs

Greater mobility & visitability for 20% of home repaired

Reduction in risk of falls in 20% of home repaired

Medium

Ability to track, document and analyze aggregated data to determine cost benefit of specific housing/non housing interventions on fall prevention, food insecurity, isolation and mobility.

Long

Multiple generation of low-income older adults are able to stay and thrive in their homes and communities of choice.

Questions and Answers





Habitat
for Humanity®

THANK YOU!