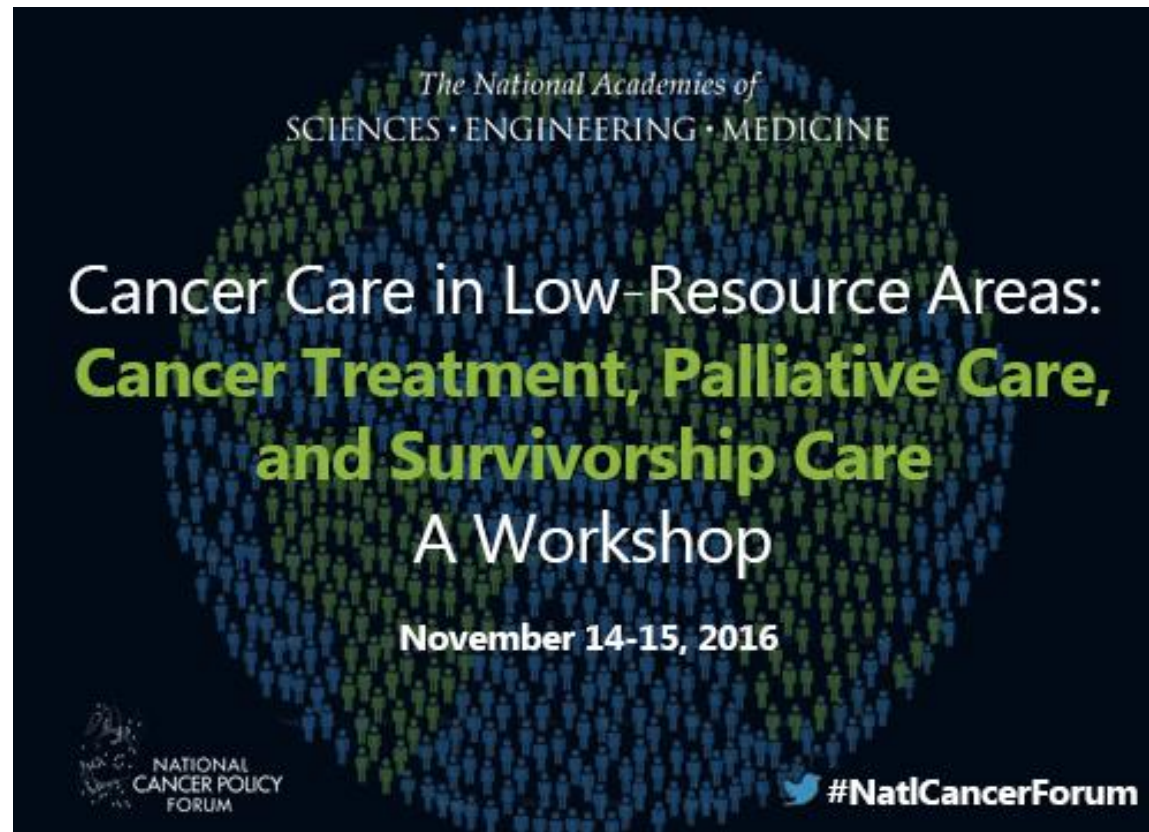


A National Cancer Policy Forum Workshop

Cancer Care in Low-Resource Areas: Cancer Treatment, Palliative Care, and Survivorship Care



#NatlCancerForum

The National Academies of
SCIENCES • ENGINEERING • MEDICINE

Workshop Planning Committee Members

CO-CHAIRS:

ROBERT CARLSON

RICHARD LARSON

WENDY DEMARK-WAHNEFRIED

SAMIR KHLEIF

MARK LAZENBY

GRETA MASSETTI

WORTA MCCASKILL-STEVENSON

LOYCE PACE

KATHLEEN SCHMELER

YA-CHEN TINA SHIH

LAWRENCE SHULMAN

BHADRASAIN VIKRAM

The National Cancer Policy Forum Sponsors



NATIONAL
CANCER POLICY
FORUM

Centers for Disease Control and Prevention
National Cancer Institute/National Institutes of Health
American Association for Cancer Research
American Cancer Society
American College of Radiology
American Society of Clinical Oncology
American Society of Hematology
American Society for Radiation Oncology
Association of American Cancer Institutes
AstraZeneca
Bristol-Myers Squibb
Cancer Support Community
CEO Roundtable on Cancer
Helsinn Group
LIVESTRONG Foundation
National Comprehensive Cancer Network
Novartis Oncology
Oncology Nursing Society
Pfizer


Overview of the Workshop: Robert Carlson and Richard Larson

The National Academies of
SCIENCES • ENGINEERING • MEDICINE

Cancer Care in Low-Resource Areas:
**Cancer Treatment, Palliative Care,
and Survivorship Care**
A Workshop

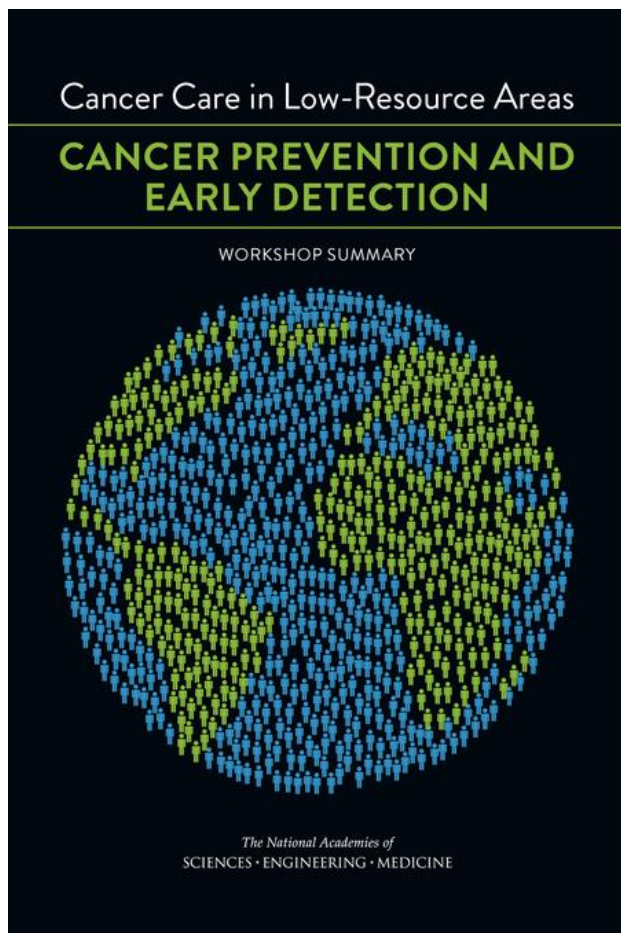
November 14-15, 2016



 #NatlCancerForum

Workshop 1: Cancer Care in Low-Resource Areas: Cancer Prevention and Early Detection

Co-Chaired by Greta Massetti and Kathleen Schmeler



Workshop sessions on:

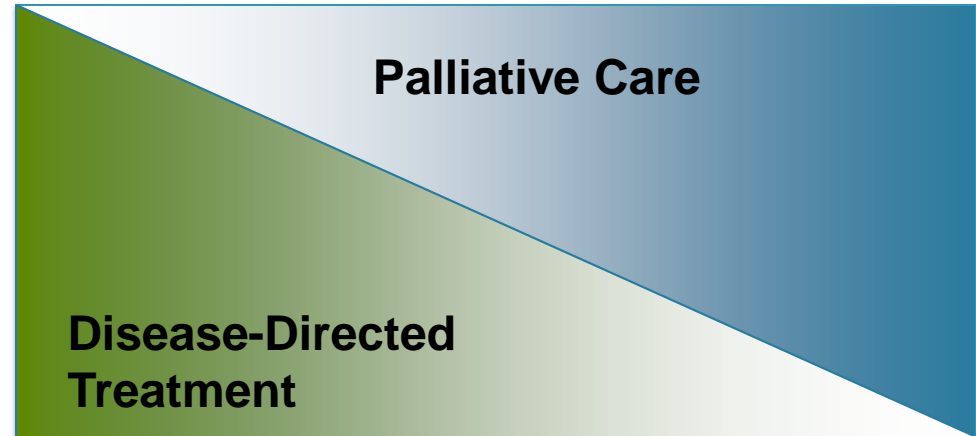
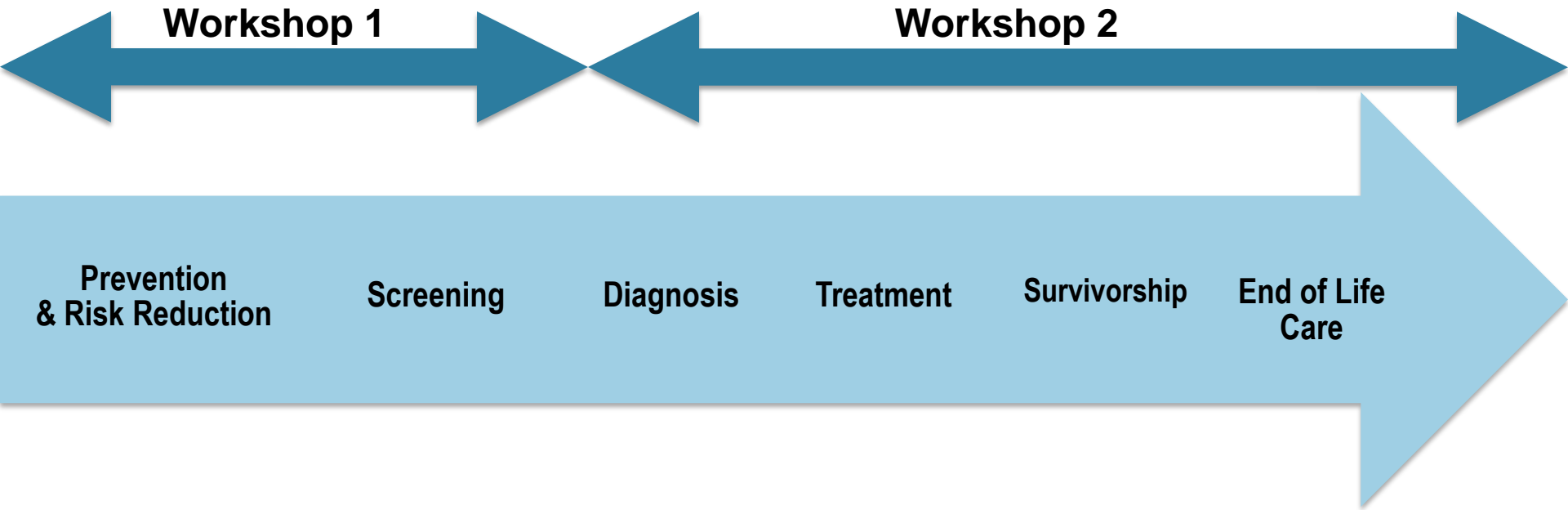
- Challenges and Opportunities
- Sociocultural Considerations
- Tobacco Control
- Other Cancer Risk Factors
- Screening and Early Detection
- Stakeholder Perspectives

Workshop Summary available free
online as a PDF.

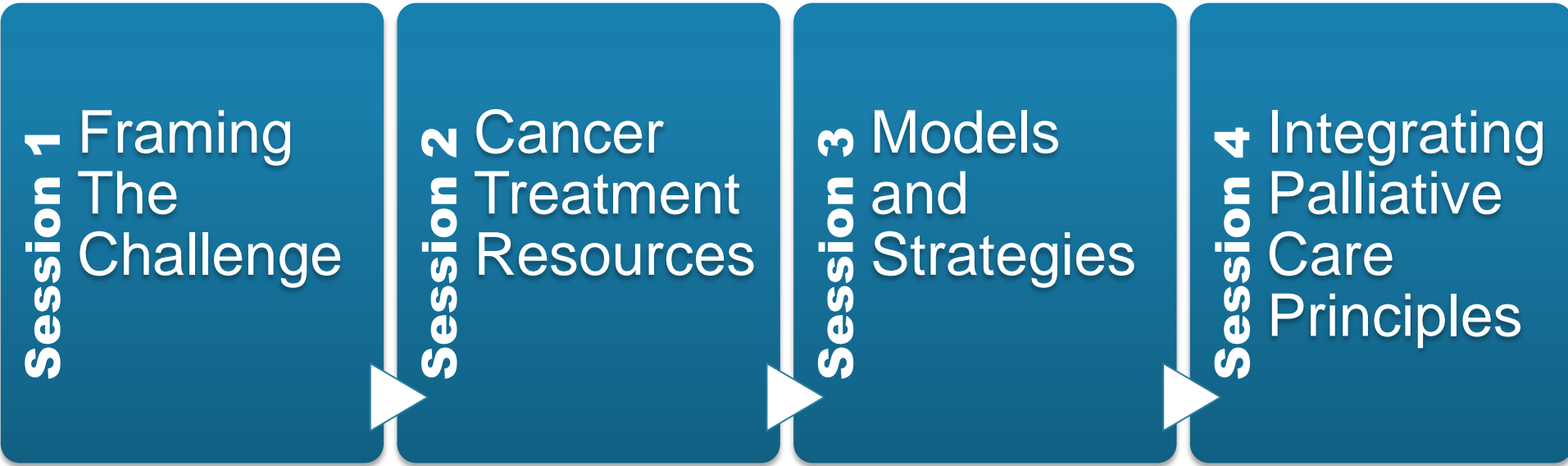
Hard Copies available at the
Registration Desk.

<https://www.nap.edu/read/21892/chapter/1>

Cancer Care Continuum



Day 1



Day 2

Session 5

Survivorship

Keynote

Global
Cancer Care
Financing

Panel

Stakeholder
Reactions &
Recs