

Opportunities for ACEs Prevention in Early Learning and Care Partnerships

The Neurocognitive and Psychosocial Impacts of Violence:
A Workshop

David Jacobson

Education Development Center

July 31, 2017



Early Childhood @EDC

Around the world, EDC improves the quality of services for children and families who are on the margins due to poverty, language minority status, mobility, ethnic or political identity, health status, situations of crisis or conflict, or other reasons.



Commitment from the beginning (Hands-On Science, 1960; Head Start, 1978)

>50 Projects



~ 1 out of 5 employees

>\$20 Million annually

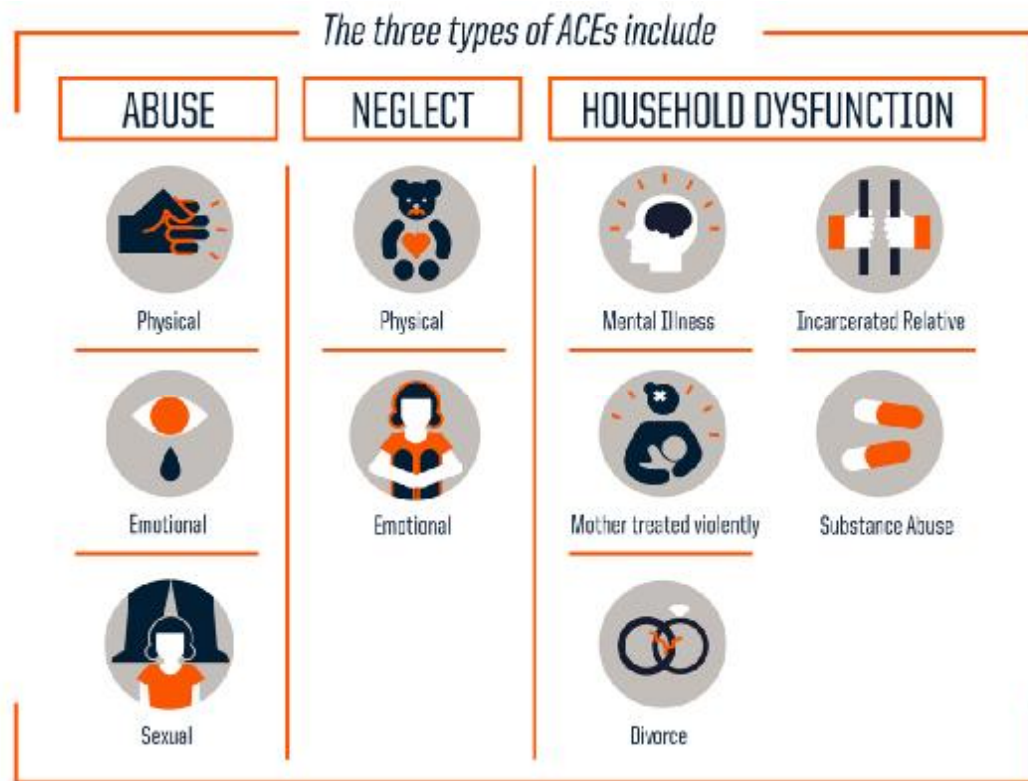
Funders: USAID, NSF, NIH, DoEd, CPB/PBS, SAMHSA, UNICEF, Heising-Simons Foundation, MasterCard Foundation

GLOBAL REACH

50 U.S. states, Asia, Africa, and Latin America



Adverse Childhood Experiences



Robert Wood Johnson Foundation

Preventing and Mitigating the Effects of ACEs

- Improvements in prenatal smoking and alcohol use among mothers
- Improved infant birth weights
- Decreased alcohol use among youth
- Improved school attendance
- High rates of community awareness of ACEs concepts
- Improvement in discipline and graduation indicators

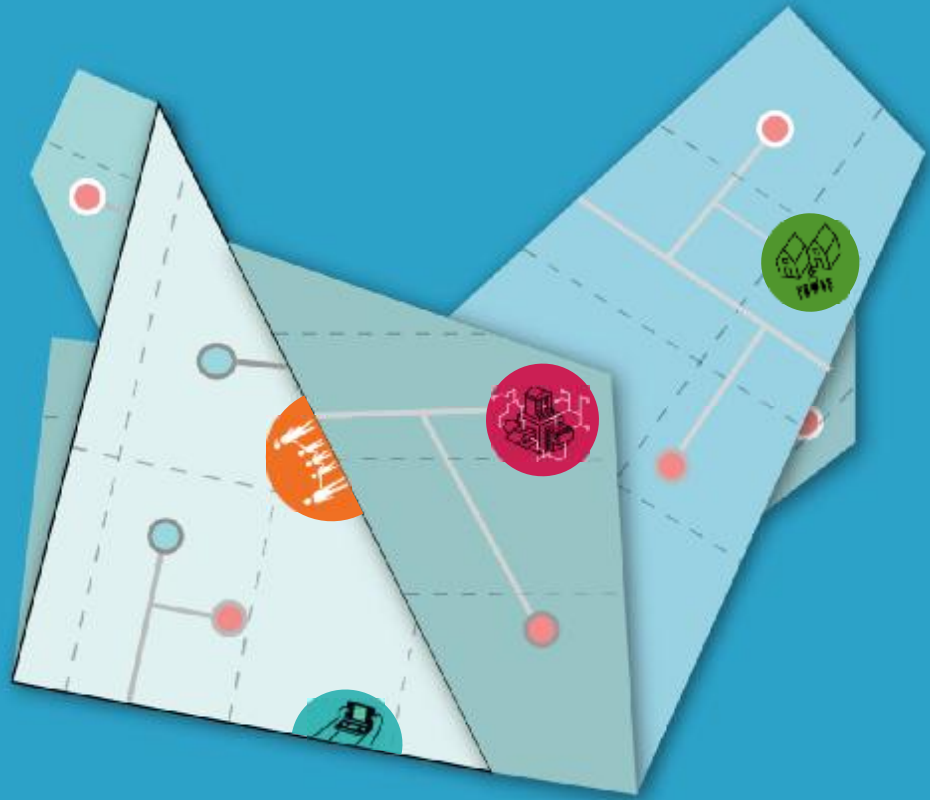
Mathematica APPI Findings, 2016

Mathematica Conclusion

Some communities had successfully reduced the “long-term social, emotional and physical problems related to abuse, neglect and other adverse childhood experiences.”

Fragmentation

- Competing National Initiatives
- Standards and Regulations
- Public/Private
- 0-5 and K-12



The Challenge

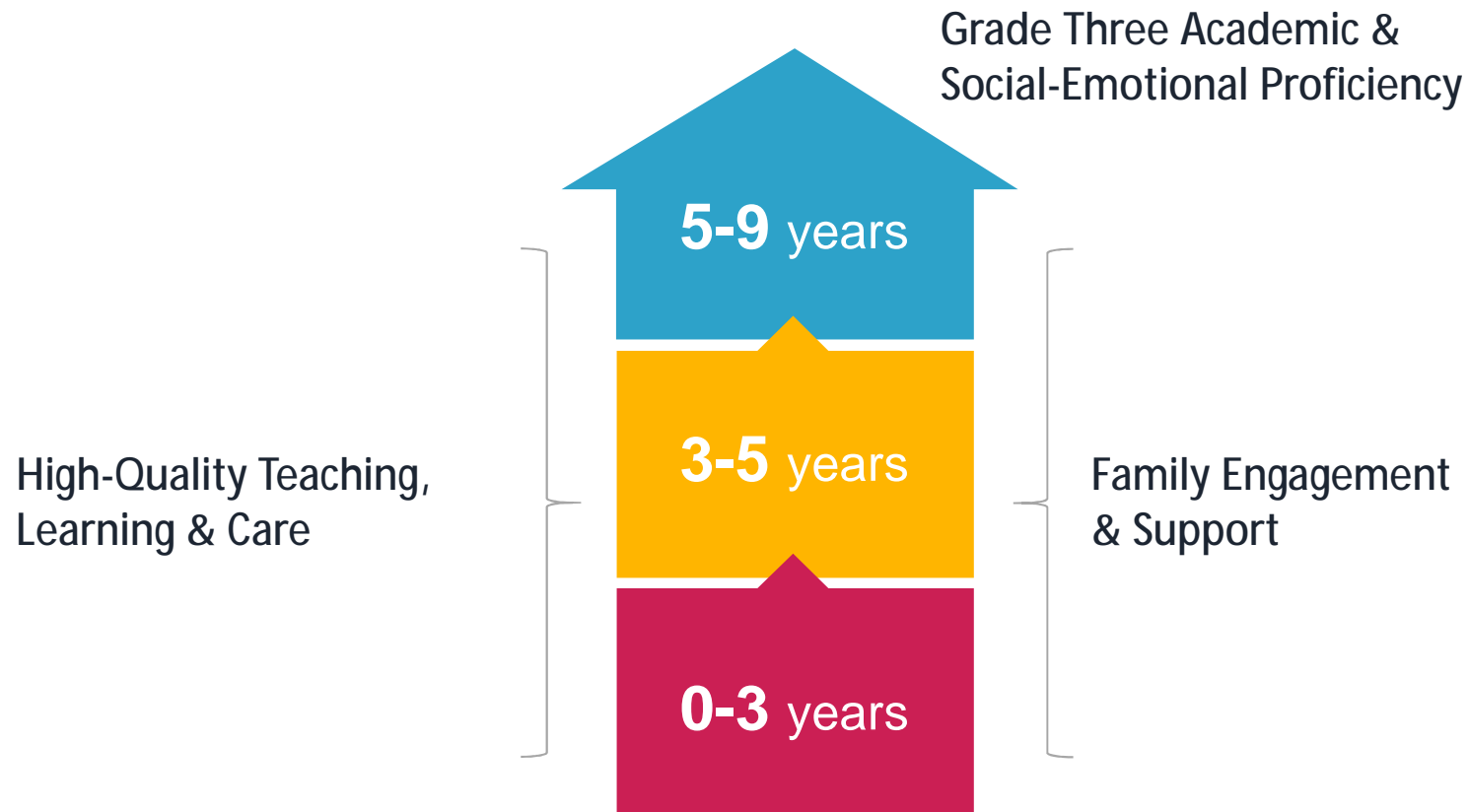
Current Practice

- Inconsistent Quality
- Gaps across the age span
- Lack of coordination at each stage of development

Best Practice

- Consistent quality
- Alignment across the age span
- Coordination at each stage of development

The P-3 Continuum

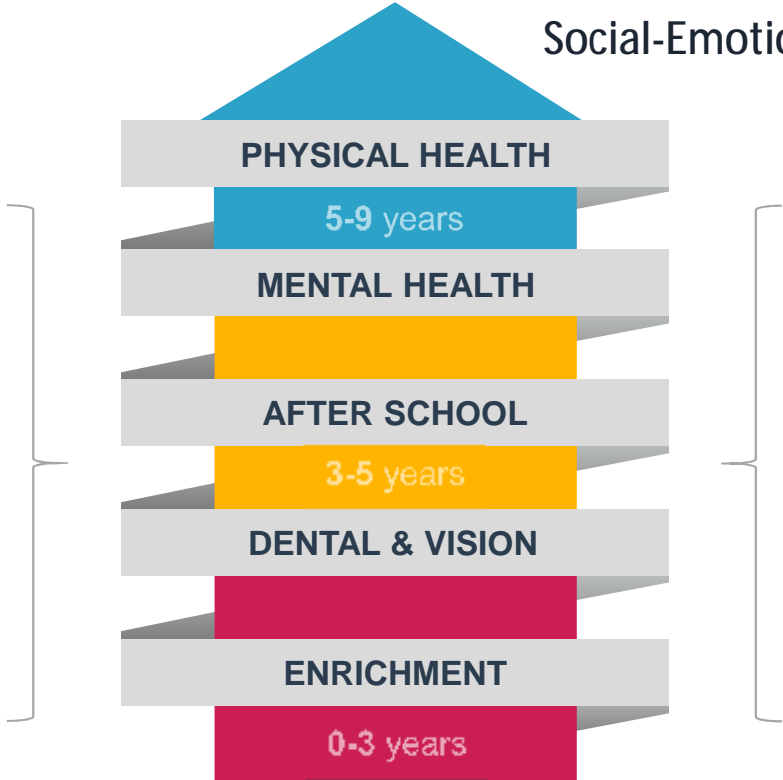


P-3 and Wraparound

Grade Three Academic & Social-Emotional Proficiency

High-Quality Teaching, Learning & Care

Family Engagement & Support



Chicago Child-Parent Centers: Program Features

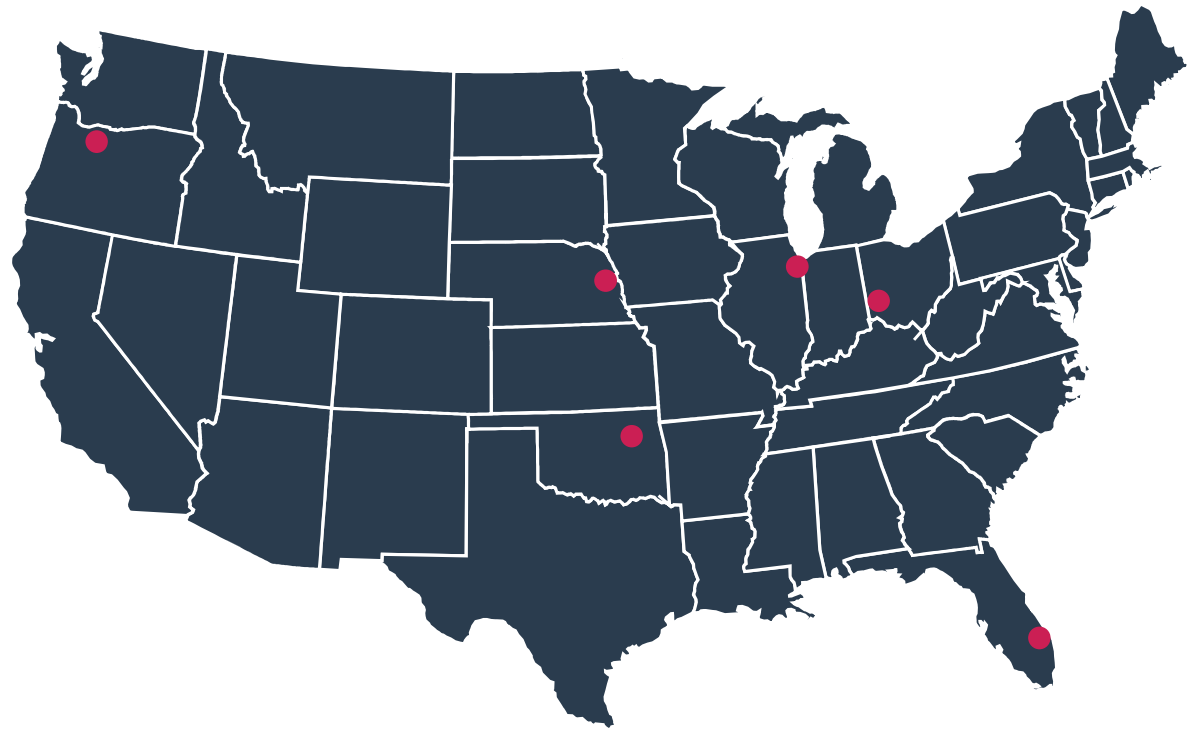
- High quality preschool and early elementary program
- Support for developmentally appropriate curriculum and extensive professional learning
- Parent involvement
- Community supports for children and families

Chicago Child-Parent Centers: Results

- Academic gains through high school
- Reductions in remedial education and special education
- Less substance abuse
- Increased educational attainment
- Less involvement in justice system
- Higher earnings
- Less depression
- \$11 for every dollar invested

Promising Examples

- Cincinnati wrap-around schools
- Multnomah County, OR
- Tulsa, OK
- Palm Beach Children's Services Council
- Superintendents' Plan in Greater Omaha, NE



Fundamentally Purple

- ☑ Starting early
- ☑ Addressing the whole child
 - Health
 - Social-emotional and character development
 - Cognitive and academic
- ☑ Deepening family engagement and support
- ☑ Strengthening neighborhoods and communities
 - Place-based
 - Cross-sectoral partnerships



Education Week Commentary, May 9, 2017

Supporting Trends, a Challenge, and a Future Direction



Supporting Trends

- Fundamentally purple
- The role of states and networks



Challenge

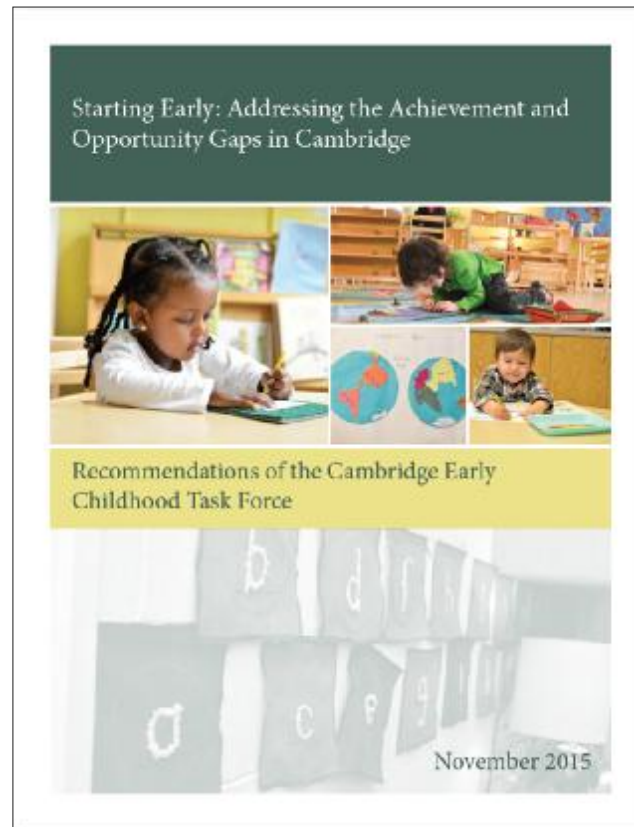
- Capacity to carry out comprehensive work



A Future Direction

- Early learning and care partnerships as high-capacity community institutions

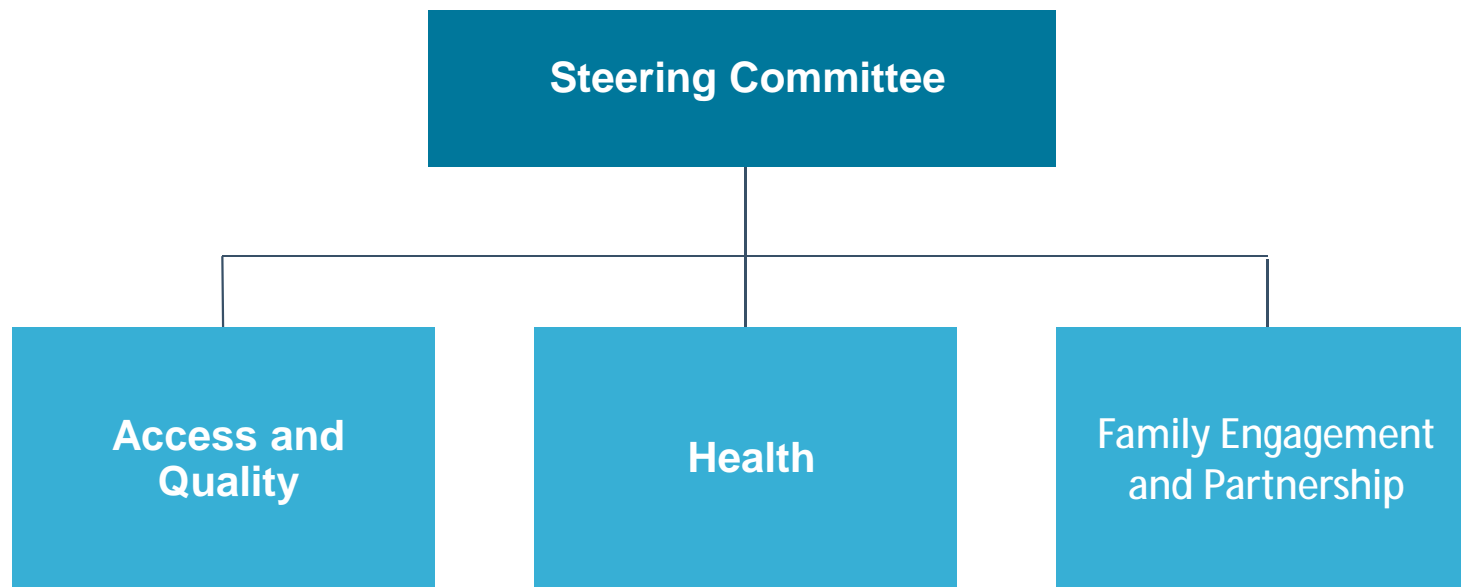
One Model: An Institutional Response



Five Recommended Goals

- 1 Access and Affordability
- 2 Program Quality
- 3 Family Engagement and Support
- 4 Access to Quality Healthcare Services
- 5 Shared Governance and Leadership

Cambridge's Birth through Third Grade Partnership



THANK YOU

David Jacobson

djacobson@edc.org

