

Logistical and Other “Reality” Issues in Disaster Research

Joseph A. Barbera, MD

Associate Professor of Engineering Management

Clinical Associate Professor of Emergency Medicine

Co-Director, Institute for Crisis, Disaster & Risk Management

The George Washington University

jbarbera@gwu.edu

Logistical and Other “Reality” Issues in Disaster Research

Objectives:

- Identify timeliness issues
- Identify logistical & other issues
- Discuss options for assessing disaster sites or data for research

The “Gap” in Disaster Research

Sudden Onset Disaster Timeline

Pre-Disaster
Research

Disaster Impact
& Immed Post

Post-Disaster
Research



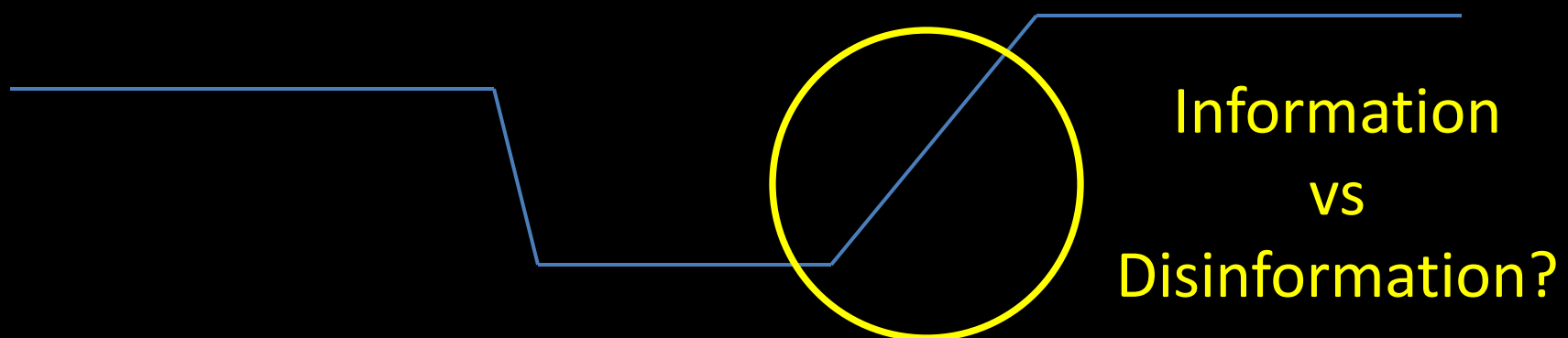
The “Gap” in Disaster Research

Sudden Onset Disaster Timeline

Pre-Disaster
Research

Disaster Impact
& Immed Post

Post-Disaster
Research



The issue of “perishable data”

Issues:

- “Its there and then its not...”
 - ✓ The scale and scope and chaos can obscure the detail.

EXAMPLE (Philippines EQ 1990)

The issue of “perishable data”

“Its there and then its not...”

“about 400...”

The issue of “perishable data”

Issues:

- From honest & unvarnished to processed, rationalized reporting...

Example: Northridge Earthquake reporting...

The issue of “perishable data”

Issues:

- From assistance seeking to liability protecting...

EXAMPLE: “Here’s our problems and needs” to
“everything is beautiful... in its own way...”

EXAMPLE: H Katrina New Orleans defense of
some hospitals’ medical performance...

The issue of “perishable data”

Issues:

- Capturing the emergency context for accurate data interpretation...

Example: Philippines EQ 1990

The issues of “researchers in a disaster”

Issues:

- Perception: It’s a disaster because of inadequate resources, so research resources are viewed as displacing response...
- Sensitivity: “Researching on my misfortune to help people in your country/agency/etc.?”
- Competency: Interfering with or skewing response... or skewing later reassessment of the response decisions/actions

Potential solutions

Ideas:

- Sending researchers versus training responders to capture research data?

Potential solutions

Ideas:

- Sending researchers versus training responders to capture research data?
 - ✓ Pluses and Minuses...

Potential solutions

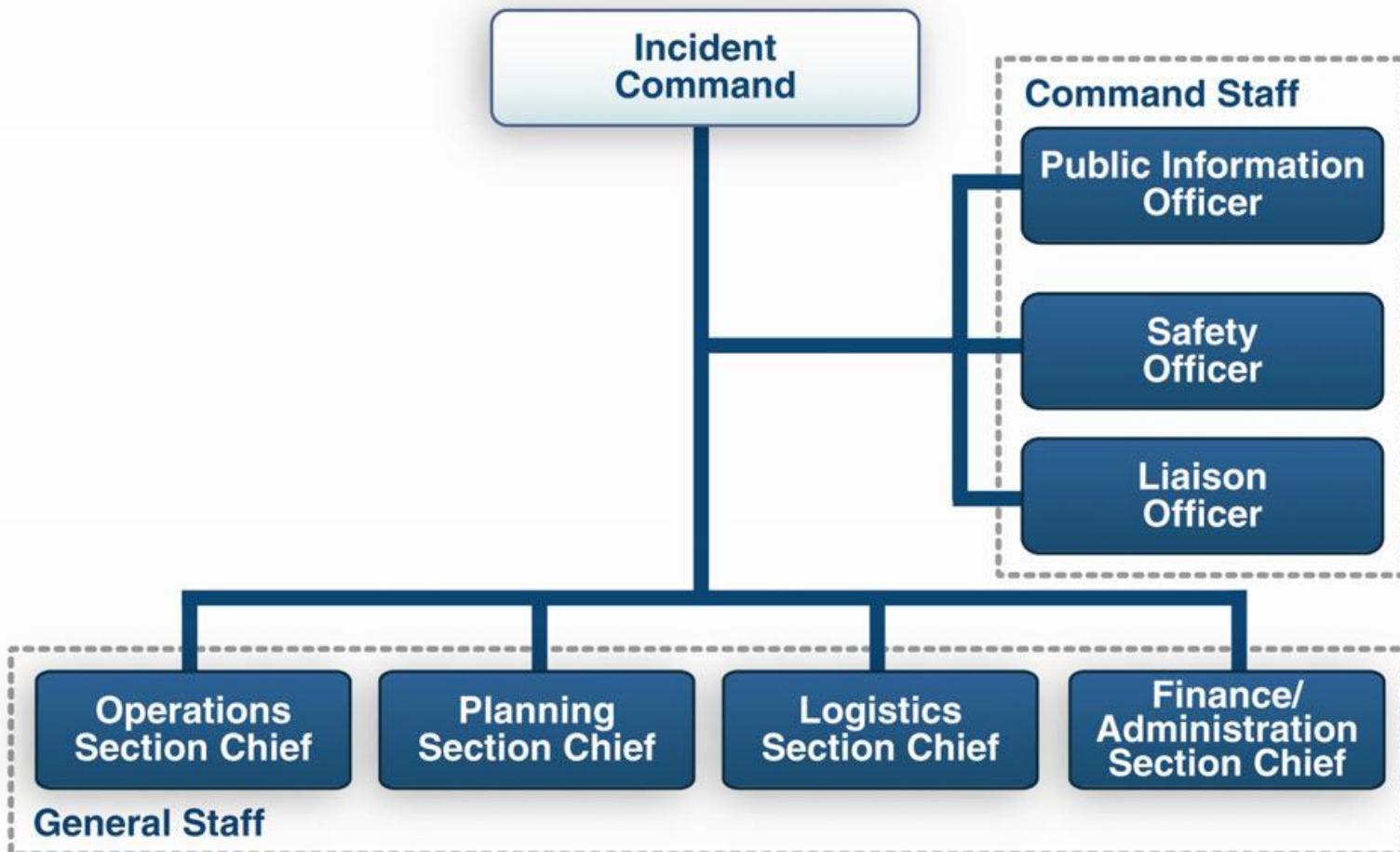
Ideas:

- Understanding and using/participating in ICS.

National Incident Management System (NIMS)

- Gain an “operational level of proficiency”

Incident Command System (ICS)



National Incident Management System (NIMS)

- Performing in/with Planning Section functions.

Figure 6. Planning Section Organization



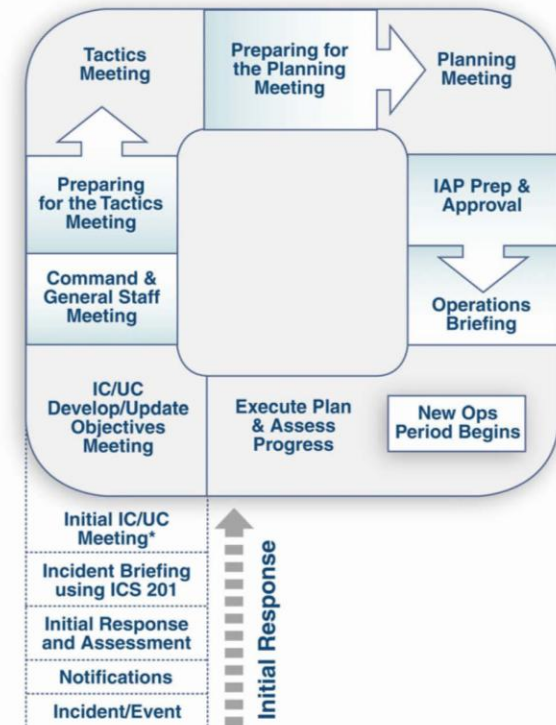
Potential solutions

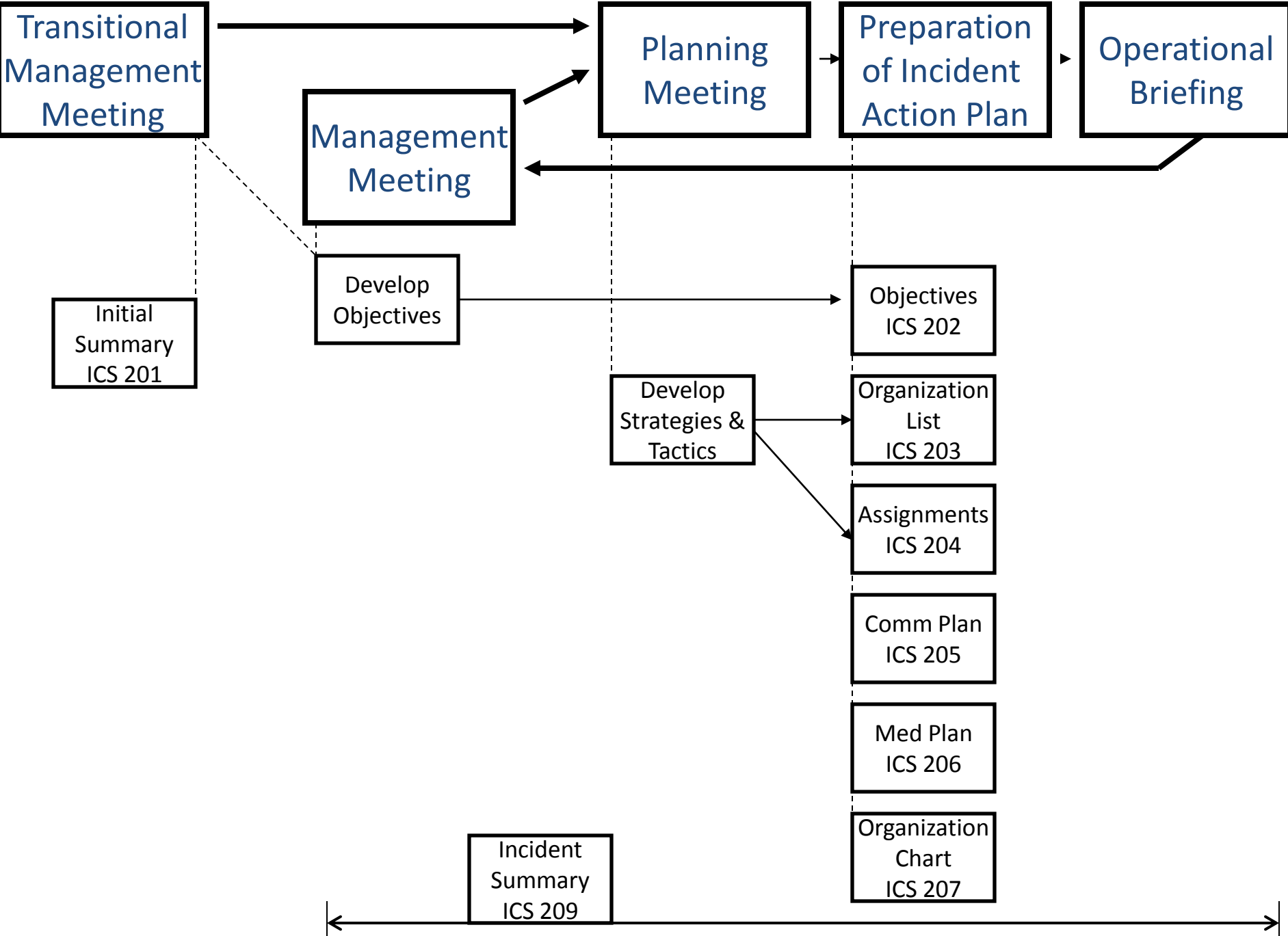
Ideas:

- Capturing research data from IMT information.

- ✓ Incident Command System
Incident Action Plan and its
component forms...

Figure B-9. Operational Period Planning Cycle





ICS Forms in Incident Action Planning

Initial Situation	Operational Planning Mtg	Incident Action Plan	Executive Summary	Resource Tracking	Misc.
201: Incident Briefing	215: Planning Worksheet	202: Incident Objectives	209: Incident Summary	210: Status Change	213: General Message
		203: Organization List	230: Meeting Schedule	211: Check in list	214: Unit Log
		204: Assignments		219: T cards	
		205: Comm plan		221: Demob Checkout	
		206: Medical plan			
		207: Org chart			

Potential solutions

Ideas:

- Training and supporting researchers.
 - ✓ Methods for rapid deployment & transport to incident.
 - ✓ Integration into incident in assigned roles (even if “just research”) – BUILD TRUST
 - ✓ Safety and protective knowledge, skills and equipment.
 - ✓ Self-sustainment (food , water, billeting).

Potential solutions

Ideas:

- Access through Emergency Operations Centers.
 - ✓ Emergency Operations Center directly supporting the IMT.
 - ✓ Integration through the Health Department Operations Center or equivalent.
 - ✓ Understand the interface between the operations centers and “the field”.
 - ✓ All of the preceding suggestions apply.

Potential solutions

Strategies:

- Be of use to the response.
 - ✓ Collect data and rapidly disseminate raw aggregate for use by appropriate responders.
 - ✓ Data is collected for response – later can be used professionally for research.

Potential solutions

Strategies:

- Be of use to the response.
 - ✓ Be available to provide competent (i.e., situational) technical advice while conducting research mission.
 - ✓ Contribute to situation reports for incident action planning.

Potential solutions

Strategies:

- Be of use to the response.
 - ✓ Consider “applied research” (or at least don’t “dis” it).
 - ✓ The disaster response becomes the research “proof of concept”.