



Leading for Better Health

Workforce Readiness and Response Capacity: A Pennsylvania Perspective

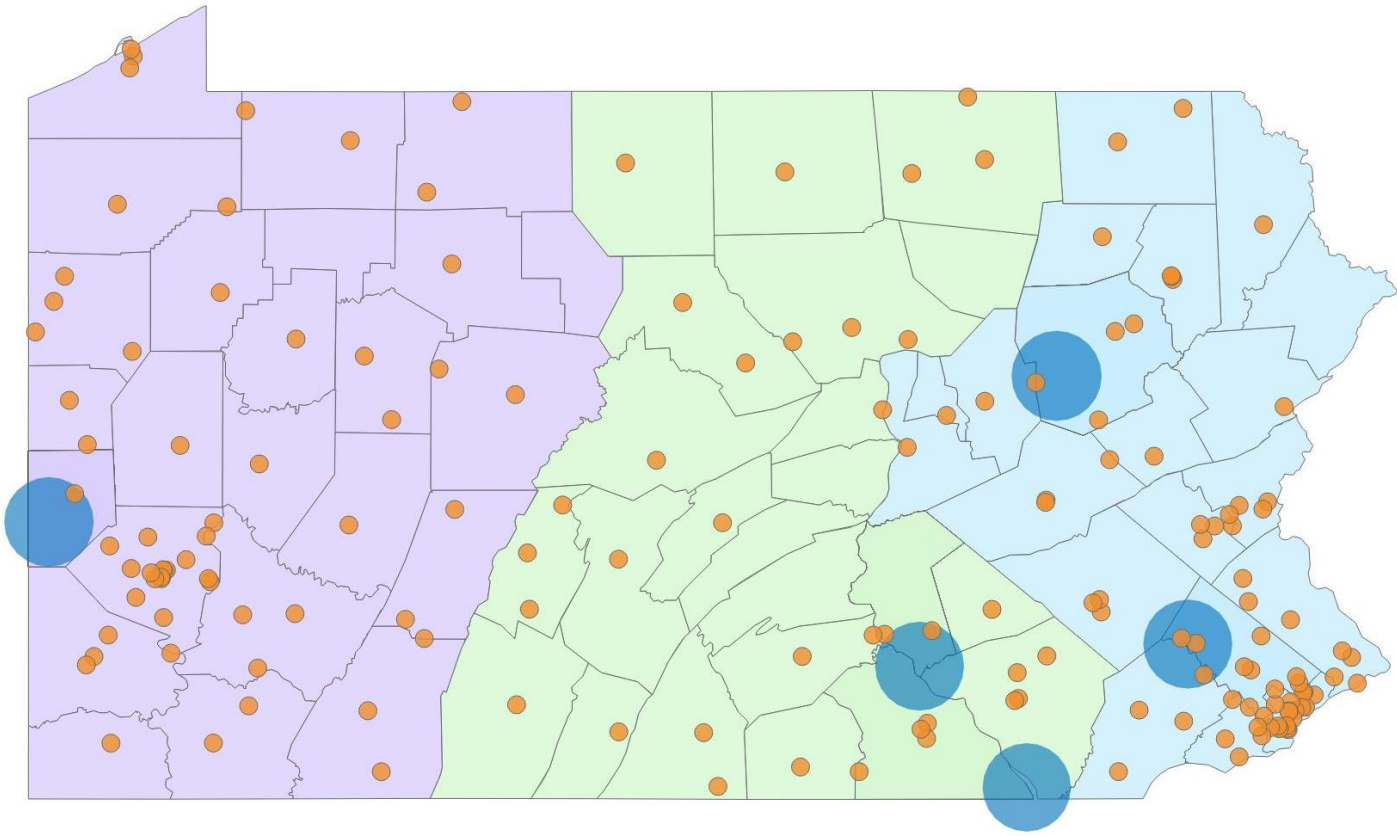
Exploring Medical and Public health Preparedness for a Nuclear Incident

The National Academies of Sciences, Engineering, and Medicine

August 23, 2018

Michael J. Consuelos, MD MBA
Senior Vice President, Clinical Integration

Lessons from TMI



Power Plant Region

- Central
- Eastern
- Western

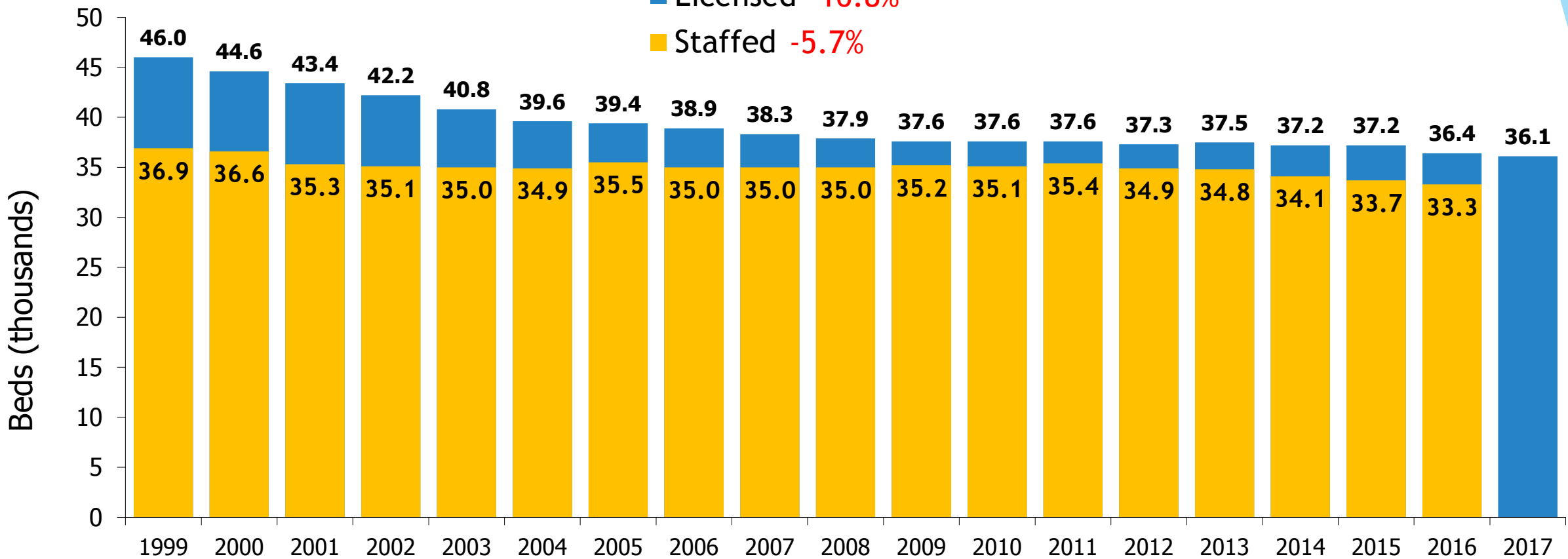
Facility Indicator

- General Acute Care Facilities
- Power Plant

Pennsylvania General Acute Care Hospitals

Since 2001

■ Licensed -16.8%
 ■ Staffed -5.7%



Source: Pennsylvania Department of Health Annual Hospital Reports,
<https://www.health.pa.gov/topics/HealthStatistics/HealthFacilities/HospitalReports/Pages/hospital-reports.aspx>
 Note: Starting in 2016 data is calendar year; all previous years are fiscal year data

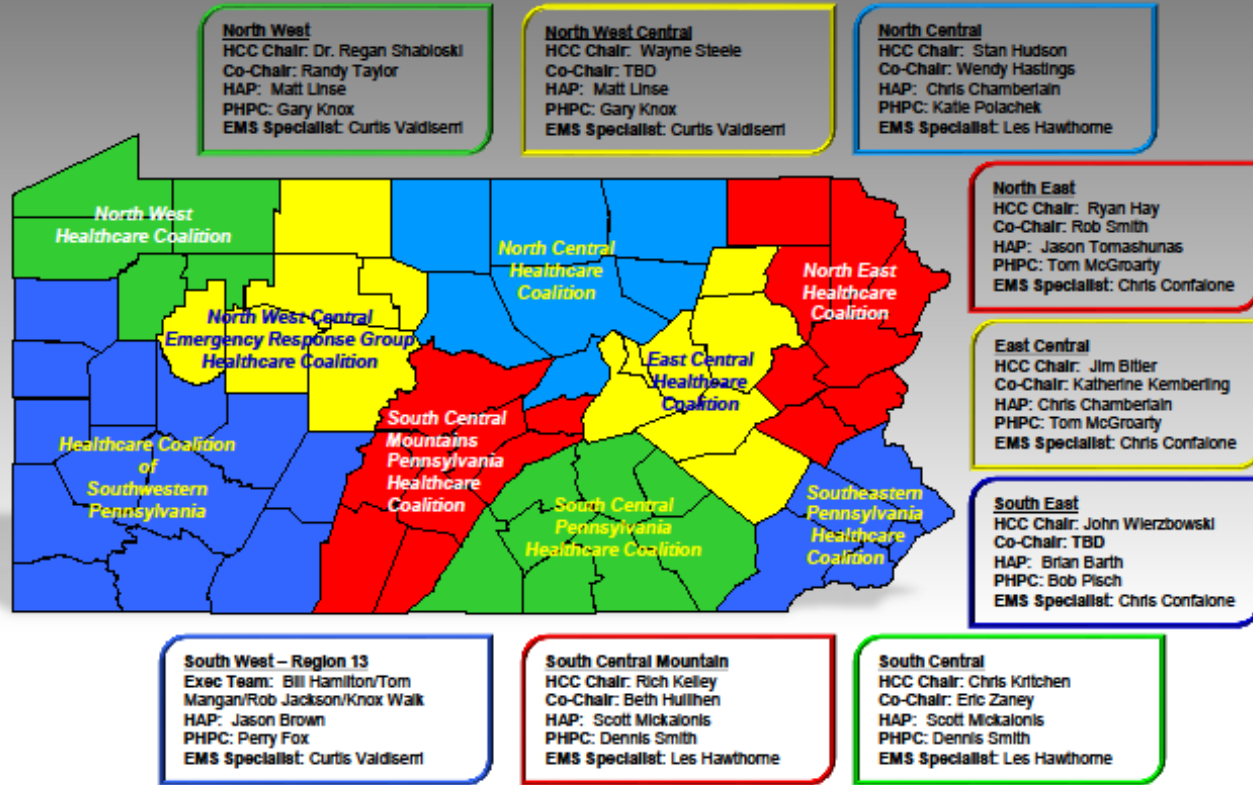


Pennsylvania Perspective

- Capacity:
 - ▶ Real time bed status
 - ▶ Influenza
 - ▶ Lessons from Las Vegas
 - ▶ Role of non-acute settings
 - ▶ Regional Disaster Health Response System (RDHRS)
- Readiness
 - ▶ Training priorities
 - ▶ Lessons from Harvey
 - ▶ Blurring the line between essential and non-essential
 - ▶ Healthcare Coalitions

PA HEALTH CARE COALITION CONTACTS 2018

Updated 05.22.2018



HCC – Healthcare Coalition
HAP – Hospital Association of PA
PHPC – Public Health Preparedness Coordinator
EMS Specialist – Emergency Medical Services Specialist.



Michael J. Consuelos, MD MBA
Senior Vice President, Clinical Integration
The Hospital & Healthsystem Association of Pennsylvania
mconsuelos@haponline.org