

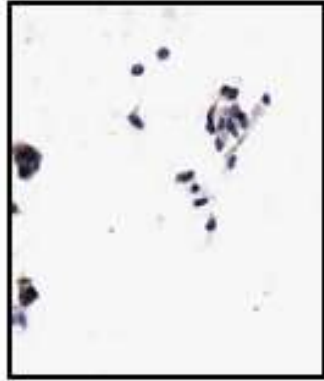
BRD4-NUT

t(15;19)(q13, p13.1)

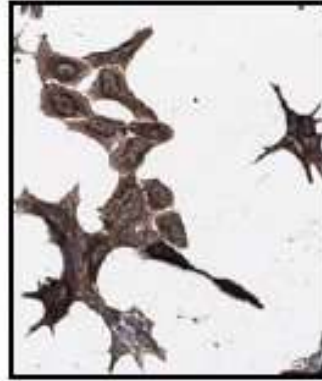


58-169

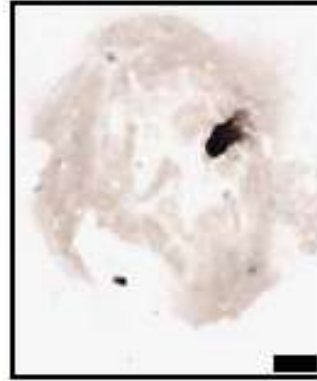
349-461



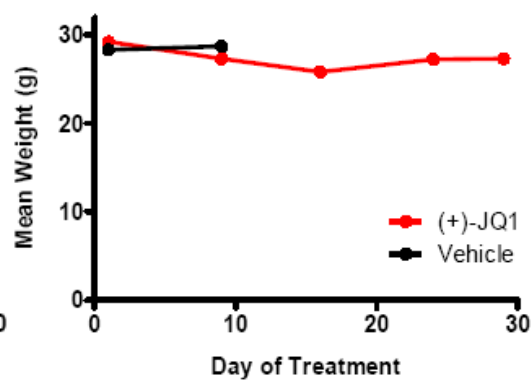
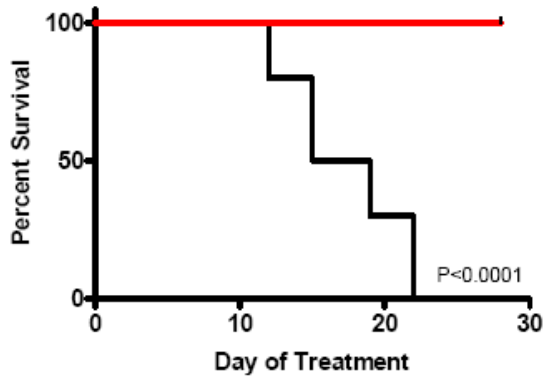
t=0

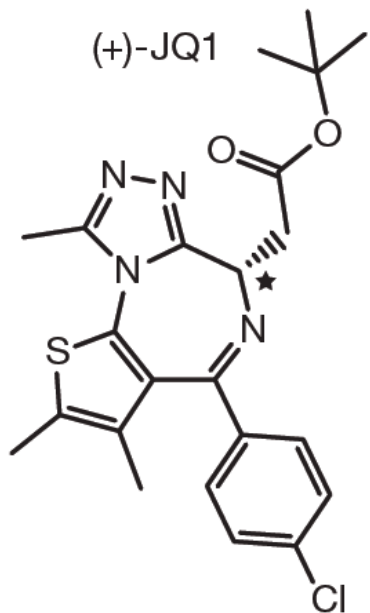


72h



7d





Barriers to Clinical Translation

Impossibly rare cancer

- Never studied prospectively
- Perceived to be a pediatric malignancy

JQ1 as a chemical probe

- Not optimized for DMPK properties
- Immediate opportunities for translation?

Drug development funding/infrastructure

- Non-traditional academic research
- Sense of responsibility and immediacy

INTERNATIONAL
NUT MIDLINE CARCINOMA
REGISTRY

[Home](#) [About Us](#) [Families](#) [Doctors](#) [Enroll](#) [Donate](#) [Publications](#) [Contact](#)

The International NUT Midline Carcinoma Registry Team

Top from left:

Carlos Rodriguez-Galindo, Wendy London, James (Jay) Bradner, Chelsey Mitchell, Stephen Sallan, Chris Lathan, Scott Paulson (framed picture).

Bottom from left:

Daniel Bauer, Chris French, Kelly Straight.



[Families »](#)

[Doctors »](#)

[Enroll »](#)



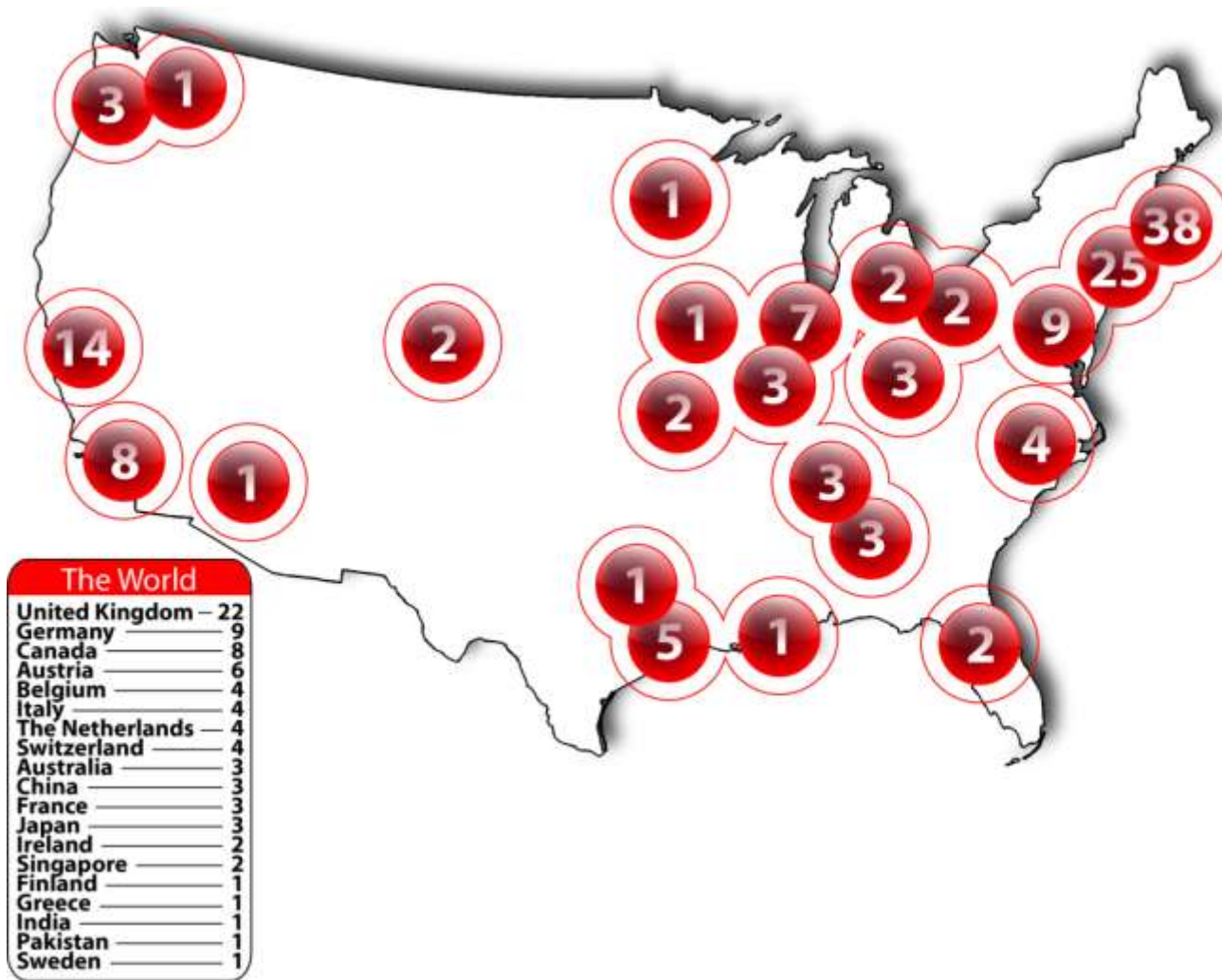
Children's Hospital Boston



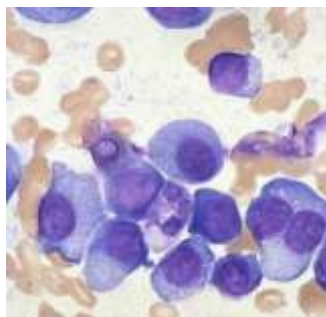
DANA-FARBER
CANCER INSTITUTE



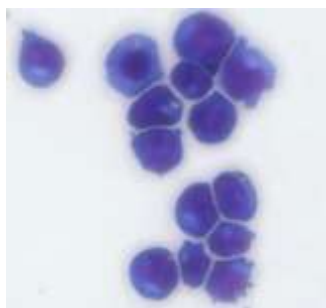
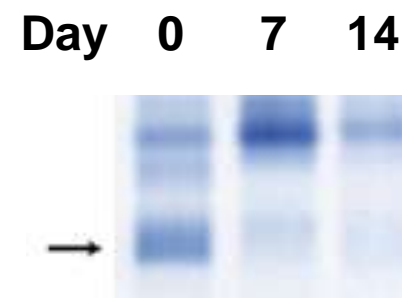
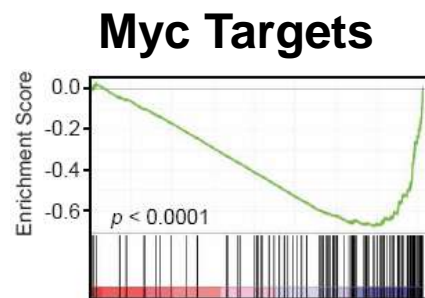
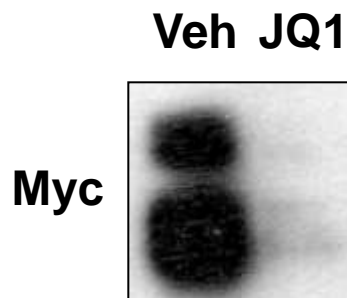
HARVARD
MEDICAL SCHOOL



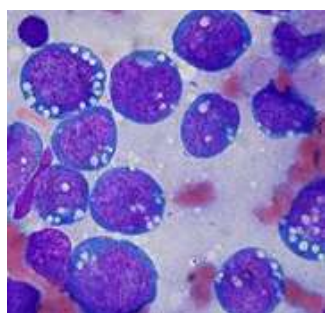
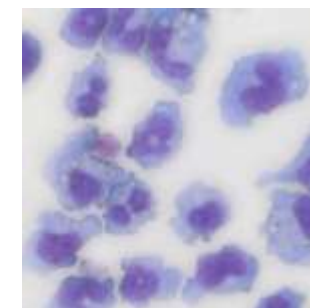
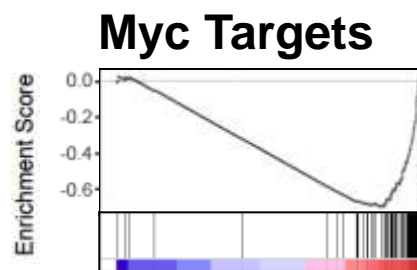
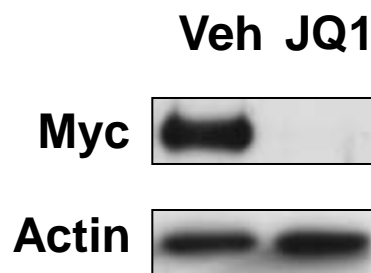
The World	
United Kingdom	22
Germany	9
Canada	8
Austria	6
Belgium	4
Italy	4
The Netherlands	4
Switzerland	4
Australia	3
China	3
France	3
Japan	3
Ireland	2
Singapore	2
Finland	1
Greece	1
India	1
Pakistan	1
Sweden	1



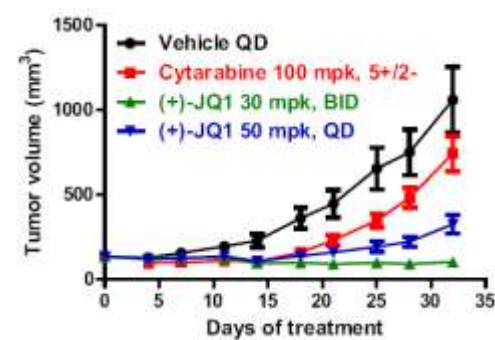
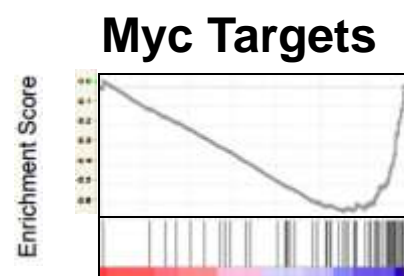
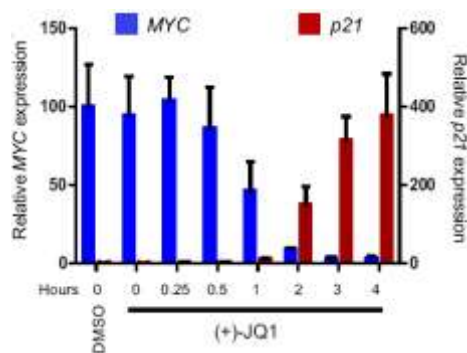
Cell (2011)

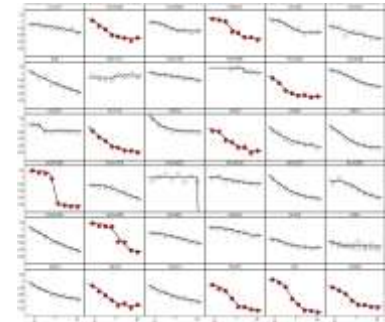
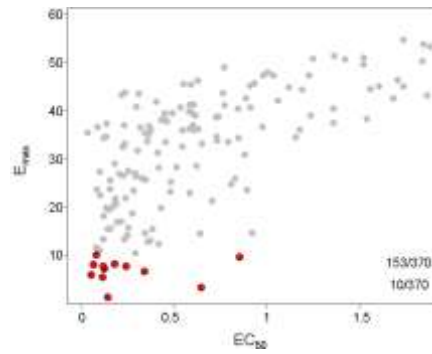
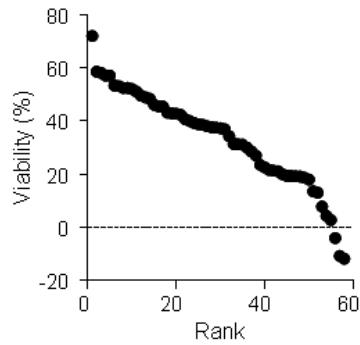
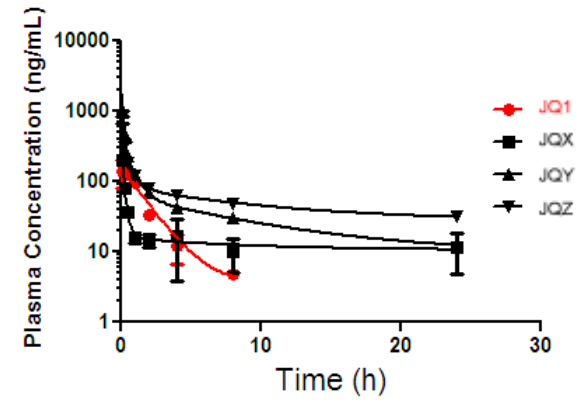
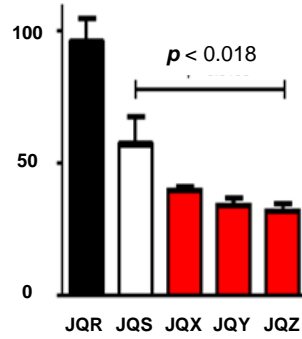
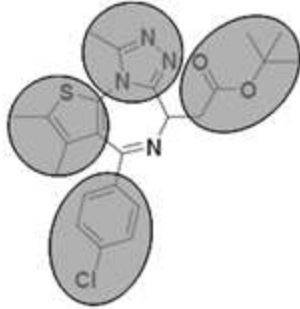


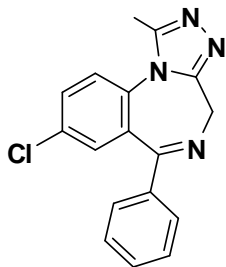
Nature (2011)



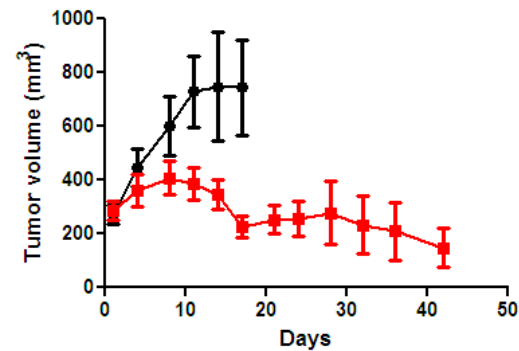
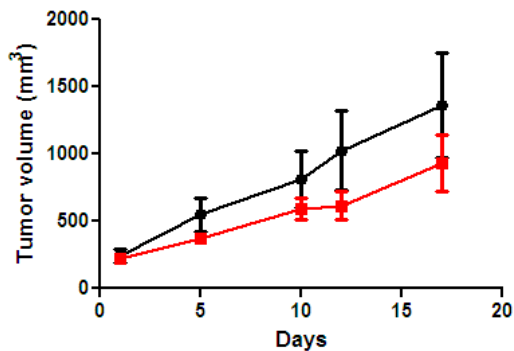
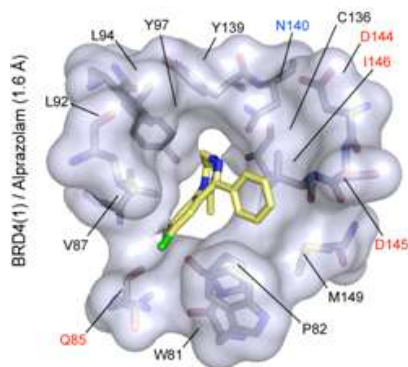
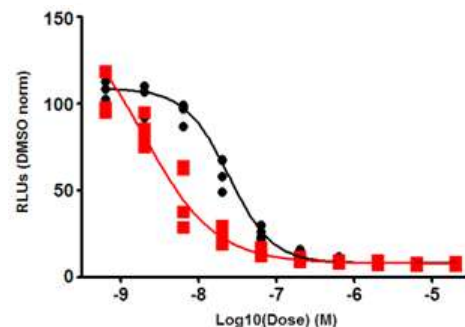
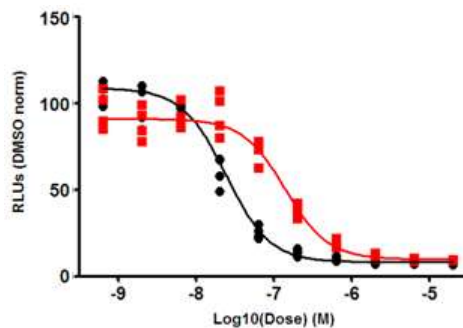
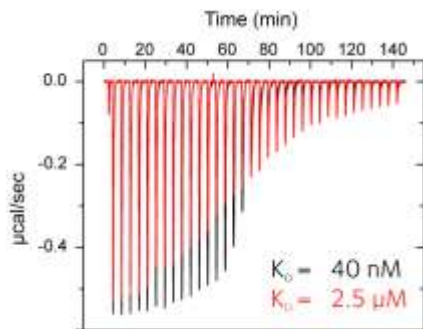
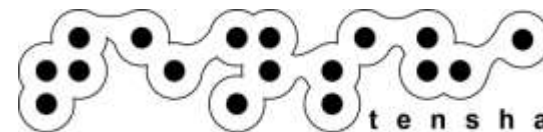
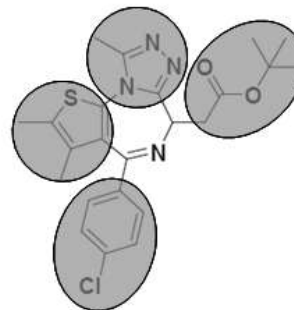
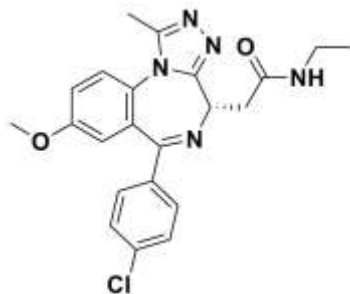
PNAS (2011)

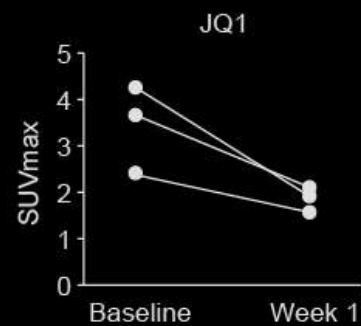
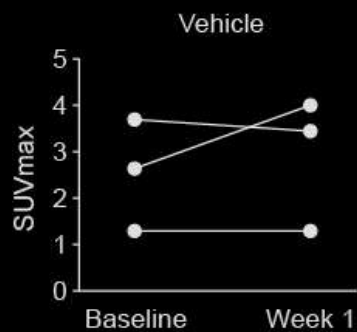
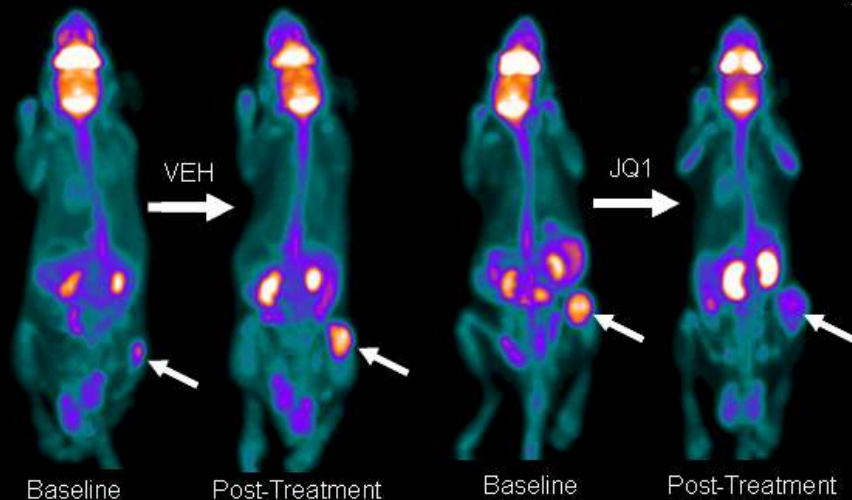






Alprazolam





target selection irrespective of perceived druggability ● facilities appropriate for discovery research ● immediate use of emerging animal models ● collaborative support of our patients ● flexibility in licensing for further clinical development ● access to a massive research infrastructure ● research motivated by creative impact insights derived from clinical experience ● lack of profit motive a sense of urgency and immediacy ● broad dissemination of chemical probes ● ability to crowd-source new indications ● long timelines ● **toward an open-source model of drug discovery** increased velocity of knowledge around a new chemical probe generation of relatively inexpensive assets ● flexible development of clinical candidates ● a tradition of creativity and research excellence ● peer-review of research at every stage ● support of institutional leadership at the dana-farber cancer institute maximum return of revenue to research and development ● no bureaucracy ● a culture of collaboration and scholarship generation of inexpensive assets ● publication of chemical probes more relaxed legal restrictions on sharing and discussing research



“...I will respect the hard-won scientific gains of those physicians in whose steps I walk, and gladly share such knowledge as is mine with those who are to follow...”

Hippocrates

Decentralize therapeutic discovery

Declassify drug discovery and development data

Empower those who succeed to succeed again

Accelerate therapies through to human clinical investigation