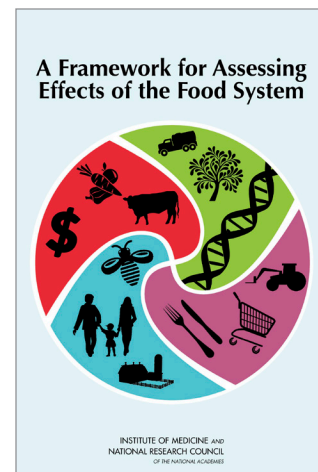


For more information visit www.iom.edu/foodsystem

A Framework for Assessing Effects of the Food System

Key Figures



The U.S. food supply chain is deeply interconnected with human health and environmental health, as well as social and economic systems. Decisions about food policies and practices, therefore, can have unintended impacts—both positive and negative. To arrive at a decision for which the benefits outweigh the risks, decision makers must carefully consider a broad range of effects and interactions across the health, environmental, social, and economic domains.

In *A Framework for Assessing Effects of the Food System*, an expert committee presents guiding principles and practical steps to help decision makers weigh tradeoffs and choose policies that integrate benefits and risks across domains. Key figures from the report appear below.

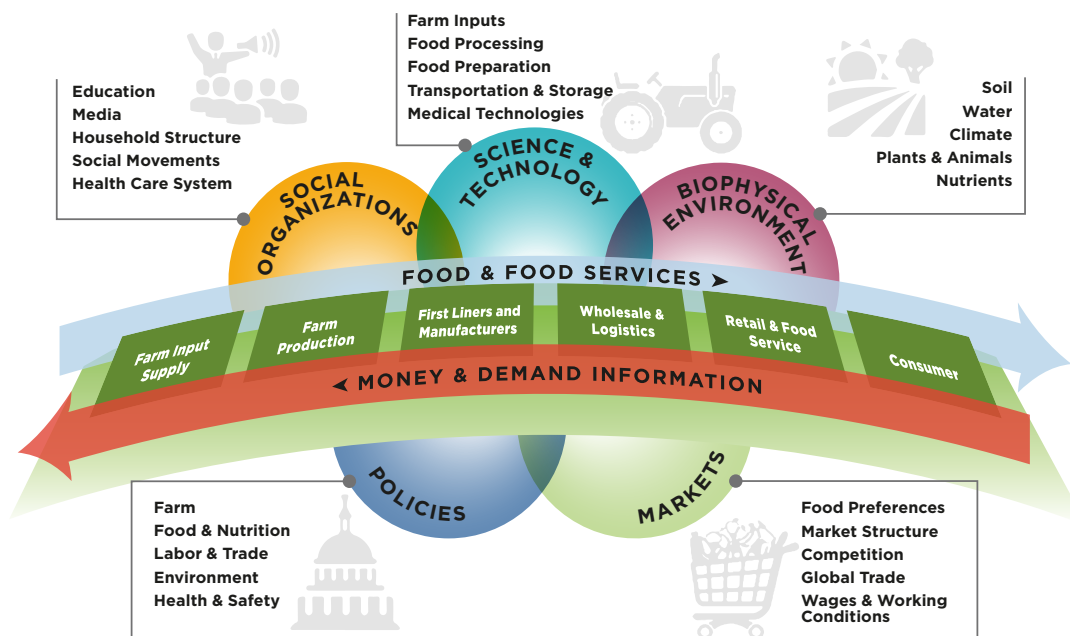


FIGURE 1 Links between the food supply chain and the larger biophysical and social/institutional context.

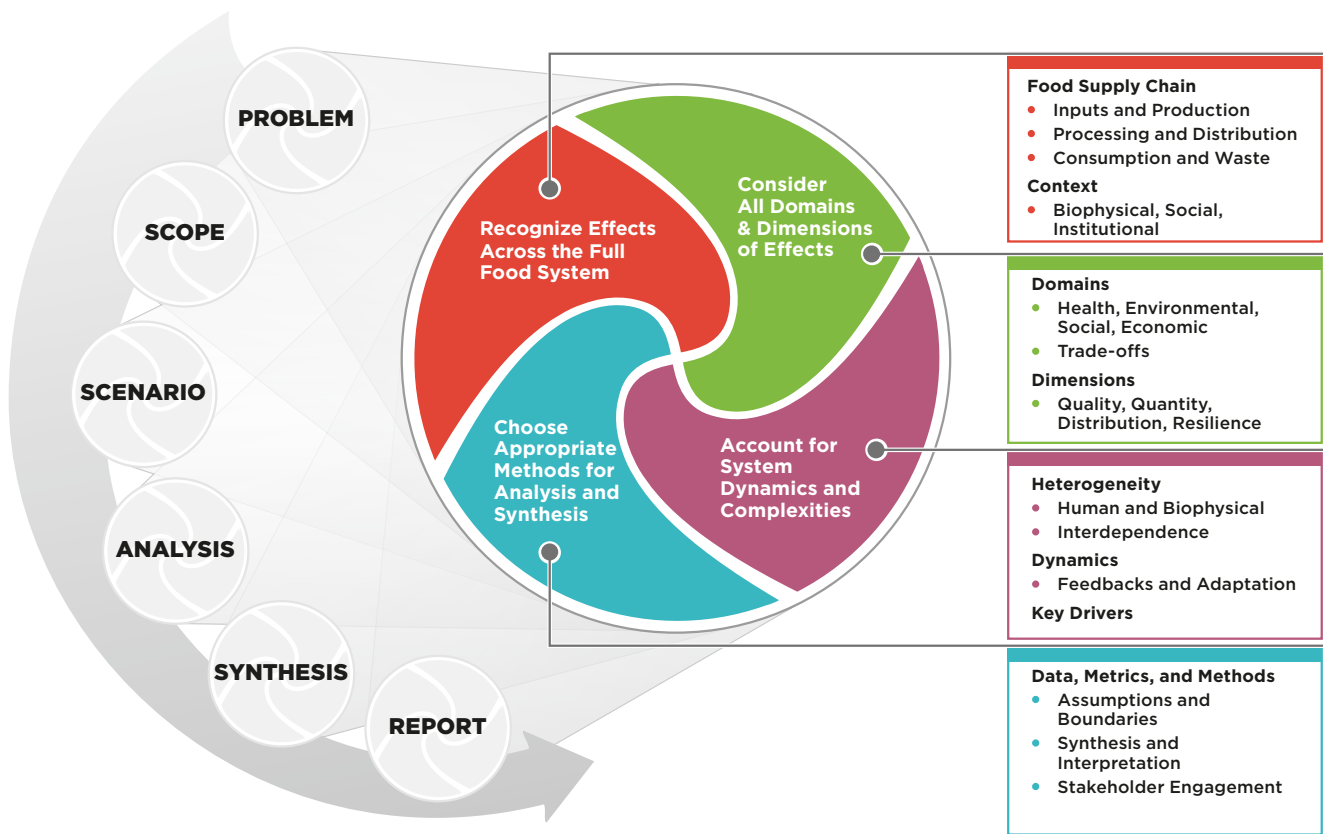


FIGURE 2 Conceptual illustration of the analytical framework. The four principles of the framework are represented in the larger circle, the core of the framework. These principles need to be considered throughout the assessment steps, represented in the figure as six small circles.