

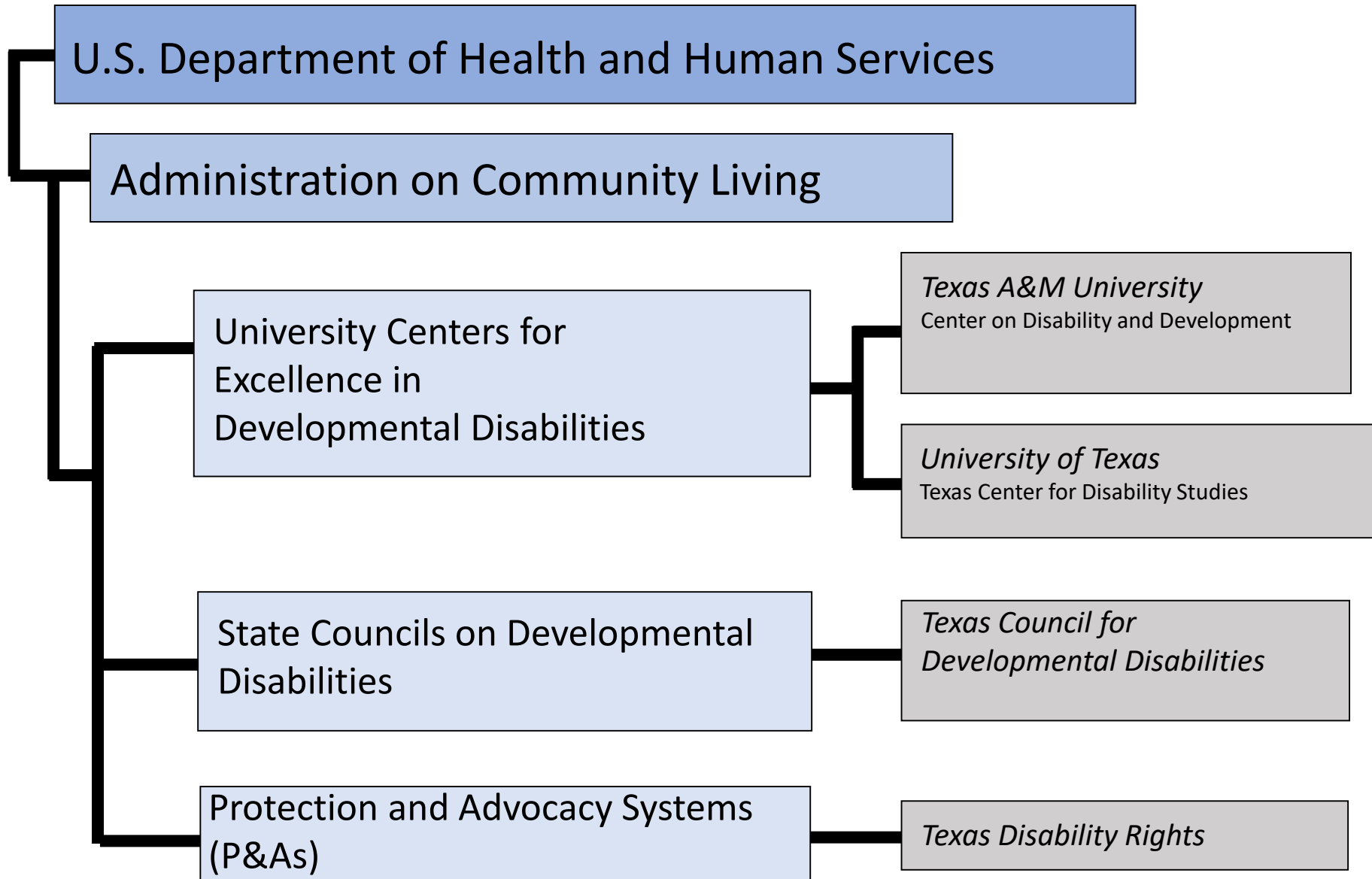
Public Health and Emergency Planning

Supporting Children with Disabilities: Lessons from the Pandemic

Laura M. Stough, Ph.D.

Center on Disability and Development

Texas A&M University





AUCD

ASSOCIATION OF UNIVERSITY CENTERS ON DISABILITIES

Research, Education, Service

A network of interdisciplinary centers advancing policy and practice for and with individuals with developmental and other disabilities, their families, and communities.

[HOME](#)[INITIATIVES](#)[NETWORK CENTERS](#)[RESOURCES](#)[NEWS](#)[EVENTS](#)[PUBLIC POLICY](#)[POLICY ISSUES](#)[CONTACT](#)

Network Centers

[UCEDDs](#)[LENDs](#)[IDDRCs](#)

Find Network Members

[UCEDDs](#) [LENDs](#) [IDDRCs](#)

AUCD Technical Assistance



UCEDD Resource Center



Interdisciplinary Technical
Assistance Center on
Autism and Developmental
Disabilities



AUCD Executive

You are here: [AUCD Home](#) / [Network Centers](#) / [UCEDDs](#) / [Directory](#) / [UCEDD Search Results](#)

UCEDD Search Results

Select a program for detail:

[View Program](#)

Tarjan Center at UCLA

University of California, Los Angeles

760 Westwood Plaza

58-228 Semel Institute

Los Angeles, CA 90095-1759

[View Program](#)

USC UCEDD at the Children's Hospital Los Angeles

Childrens Hospital Los Angeles

University of Southern California

4650 Sunset Boulevard

Mailstop #53

Los Angeles, CA 90027-6062

[View Program](#)

Center for Excellence in Developmental Disabilities at the UC Davis MIND Institute

UC Davis Health System

2825 50th Street

Sacramento, CA 95817





EDUCATION & HUMAN DEVELOPMENT

Research and Education on Disability and Disaster

[Home](#) ▾ [Research](#) [Resource Directory](#) [Disaster Information](#) ▾ [Recovery Toolkit](#) ▾ 🔍

RESEARCH AND EDUCATION ON DISABILITY AND DISASTER

Mission

Project REDD: Research and Evaluation on Disability and Disaster was established by Dr. Laura M. Stough, Professor of Educational Psychology and Assistant Director at the Center on Disability and Development, to:

- Conduct high-quality research and evaluation studies on how disasters affect individuals with disabilities in their families, and
- Provide research-based training, education, and outreach on the topic of disability and disaster for organizations, service providers, and individuals

COVID-19 Information for People with Disabilities, Older Adults, and Others with Functional or Access Needs

- [Accessible COVID-19 Statistics Tracker](#) - Provides accessible data on COVID-19.
- [Accommodation and Compliance: Coronavirus Disease 2019 \(COVID-19\)](#)
- [Administration for Community Living](#) - Information older adults and people with disabilities need to know about COVID-19.
- [Alliance for Aging Research](#) - Q&A about COVID-19 for older adults and people with chronic health conditions.
- [Autism Focused Intervention Resources & Modules](#) - Toolkit with information and resources on supporting individuals with autism through uncertain times.
- [Autism Society](#) - Provides updates, information, and resources on COVID-19 for people with in the autism community.
- [Autism Speaks](#) - Information on how to handle clinical care during social distancing and school/program closures.
- [Center for Disability Rights](#) - Information on appropriate action steps for attendant service users in a response to the Coronavirus Disease.
- [Centers for Disease Control and Prevention](#) - Information for individuals who are at a higher risk for severe illness.
- [Centers for Disease Control and Prevention](#) - Provides information about COVID-19 and related topics in ASL.
- [Centers for Medicare and Medicaid Services](#) - The Coronavirus (COVID-19) Partner Toolkit can be found here.
- [Communication First](#) - Provides the information on the communication rights of individuals that have hearing, speech, or vision impairments getting treatment during COVID-19, as well as an accommodation request form to bring to the hospital.
- [Communication Service for the Deaf](#) - Provides COVID-19 information in ASL and the number to the ASL Now COVID-19 Hotline.
- [Disability Community Preparedness Resources](#) - A document providing resources related to COVID-19 for people with disabilities.
- [Disability Rights Education & Defense Fund](#) - Provides information on the rights people with disabilities have to receive healthcare during the COVID-19 pandemic.
- [Disability Rights Texas](#) - Provides information, resources, and updates on COVID-19-related civil rights and legal issues for people with disabilities.
- [Eldercare Locator](#) - A public service to connect you to services for older adults and their families.
- [FACETS](#) - Provides resources for families with autistic children and adults.
- [Flatten Inaccessibility](#) - An opportunity for people that are blind or have low-vision to participate in an inaccessibility survey during the COVID-19 pandemic.
- [Freedom Scientific](#) - Offering JAWS, ZoomText, and Fusion assistive technology programs to individuals that are blind or have low-vision free of charge for personal computers at home until June 30th, 2020.
- [Global Healthy Living Foundation](#) - Providing a free COVID-19 support program for chronic disease patients and their families.
- [Hearing Loss Association of America](#) - Information on how to communicate with doctors, nurses, and staff at the hospital during COVID-19.
- [Houston Mayor's Office for People with Disabilities](#) - Online form created to identify the immediate needs of Houstonians with disabilities caused by



Prevention of COVID-19: Modifications and Accommodations for Individuals with Disabilities

There is currently no vaccine to prevent COVID 19. The best way to prevent infection is to take steps to avoid exposure to this virus, which are similar to the steps you take to avoid the flu. Most people with disabilities will not have difficulty with the CDC guidelines for self-protection. However, people with moderate to significant levels of disability may need the following modifications or accommodations in order to implement these guidelines. Always ensure that these and other guidelines are communicated in accessible formats.



Wash hands with soap and water.



Use hand sanitizer as backup.



Cover coughs and sneezes.



Avoid touching face.



Disinfect often touched surfaces.



Avoid close contact.

Cognitive Disabilities

- Ensure understanding of the length of time hands must be washed.
- Use a timer or other assistive device to time hand washing.
- Caregivers provide assistance and supervision so that hands are washed adequately and often.

- Ensure that people understand how to correctly use hand sanitizer.
- Caregivers provide assistance and supervision in the use of hand sanitizer.

- Model correct procedures for covering coughs and sneezes.
- Provide facemasks for those who cannot perform these functions.

- Explain the importance of keeping hands away from face.
- Caregivers provide assistance and supervision in washing hands and using hand sanitizer more frequently.

- Model disinfection procedures.
- Model correct usage and storage of disinfectant products.
- Caregivers disinfect area for these individuals.

- Replace caregivers and attendants who are sick and providing care.
- Assist with spatial separation from others.
- Model appropriate distance to keep from others.



Directory of Community Resources for People with Disabilities



TEXAS A&M UNIVERSITY
Center on Disability
and Development

[Search](#) [About](#) [Disaster Information](#)

Directory of Community Resources for People with Disabilities

Search:

Search the titles, keywords, and service descriptions of resources in the directory.

Pick A Directory:

Filter results for resources within the specified directory.

Resource type:

Filter results for resources of the specified type.

Proximity:

Filter results for resources within range of your location.

[Search Resources](#)

REDDy Directory

- REDDy: REsources on Disasters and Disability
- Funded by the Association of University Centers on Disability and the U.S. Administration on Intellectual and Developmental Disabilities.
- Based on a database of 2000+ disability resources:

The Directory of Community Resources for Individuals with Disabilities

dcr.tamu.edu

REDDy Directory



TEXAS A&M UNIVERSITY
Center on Disability
and Development

[Search](#) [About](#) [Disaster Information](#)



Search:

Search the titles, keywords, and service descriptions of resources in the directory.

Pick A Directory:

Filter results for resources within the specified directory.

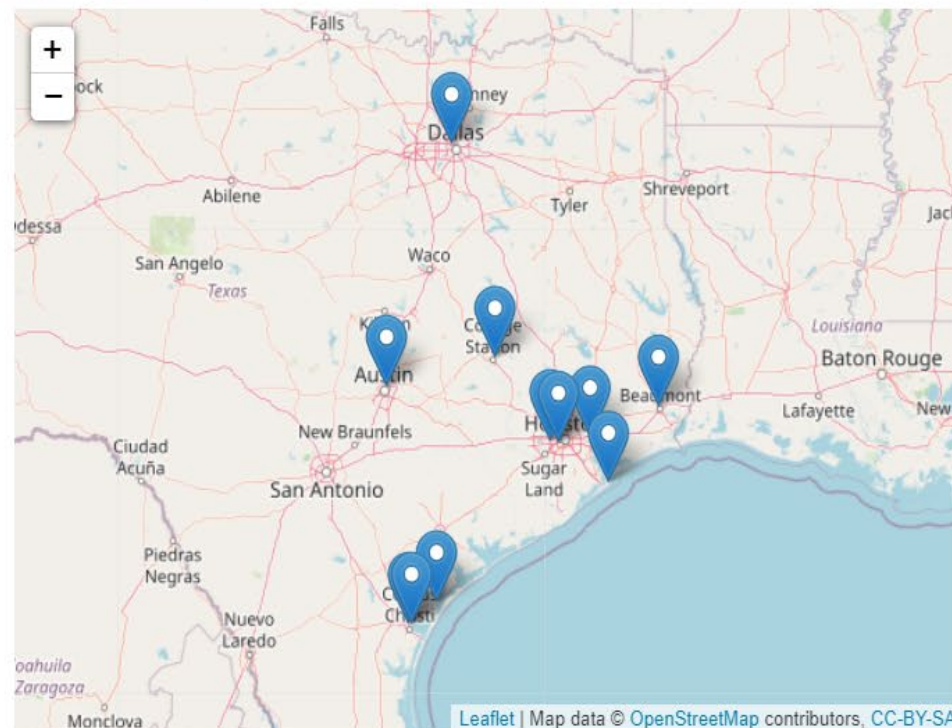
Resource type:

Filter results for resources of the specified type.

Proximity:

Filter results for resources within range of your location.

[Search Resources](#)



COVID-19 and UCEDD

Responses Across the Network

May, 2020

Hosted by:

The Emergency Preparedness Special Interest Group and
the Community Education and Dissemination Council
Association of University Centers on Disability

Webinar Presenters

- **Beth Potter**, University of Kentucky
- **Bill Gaventa**, Collaborative on Faith and Disability
- **Elizabeth Turner**, Vanderbilt
- **Larissa, Yoshino**, Oregon Health & Science University
- **Scott Mullins**, University of Southern Mississippi
- **Linda Rammler**, University of Connecticut
- **Erica Coleman**, University of Cincinnati
- **Carol Salas-Pagan**, University of Puerto Rico
- **Colleen McLaughlin**, Rutgers University
- **Andrea Caoili**, University of New Hampshire
- **Laura Stough**, Texas A&M University
- **Catherine Ipsen**, University of Montana

3X3X1

Becoming Part of the Response to COVID-19

1. Provided resources and information
2. Connected people with disabilities and disability organizations with public health and emergency management contacts
3. Developed tools, services, and supports
4. Protected and provided continuity of services and programming offered to people with disabilities and their families

The AUCD Network as a Scalable Emergency Preparedness Network

1. Preexisting interconnected infrastructure
2. Distributed disability-related expertise throughout states and territories
3. Developed relationships with disability-related organizations, self-advocates, and families
4. Developed relationships with service providers and state agencies
5. Capacity to quickly pivot and deliver pandemic-related information, support, and services
6. Mechanisms for targeted dissemination

Laura M. Stough, Ph.D.

lstough@tamu.edu

redd.tamu.edu

dcr.tamu.edu

To join AUCD's Emergency Preparedness SIG:

<https://www.aucd.org/template/page.cfm?id=545>

