

# Developing and Implementing a Useful Outcome Measurement Process for ABA

Thomas W. Frazier, PhD  
John Carroll University  
January 12, 2024

# Disclosures

I have received funding or research support from, acted as a consultant to, received travel support from, and/or received a speaker's honorarium from the PTEN Research Foundation, SYNGAP Research Fund, Malan Syndrome Foundation, ADNP Kids Research Foundation, Quadrant Biosciences, Autism Speaks, Impel NeuroPharma, F. Hoffmann-La Roche AG Pharmaceuticals, the Cole Family Research Fund, Simons Foundation, Ingalls Foundation, Forest Laboratories, Ecoeos, IntegraGen, Kugona LLC, Shire Development, Bristol-Myers Squibb, Roche Pharma, MaraBio, Scioto Biosciences, National Institutes of Health, and the Brain and Behavior Research Foundation, is employed by and has equity options in Quadrant Biosciences/Autism Analytica, has equity options in MaraBio and Springtide, and has an investor stake in Autism EYES LLC and iSCAN-R.

## NASEM Committee Areas Addressed

2. An assessment of the methods used under the demonstration project to measure the effectiveness of applied behavior analysis in the treatment of autism spectrum disorder

Relevance to:

9. The development of a list of recommendations related to the measurement, effectiveness, and increased understanding of the demonstration program and its effect on beneficiaries under the TRICARE program.

# Outline

- ▣ Challenges for ABA Outcome Assessment
- ▣ Determining what to measure
  - ▣ FDA guidance and modern measure development methods
  - ▣ Example
- ▣ Choosing the right measures
  - ▣ Psychometric characteristics
  - ▣ Practical considerations
- ▣ Current Limitations of the DoD / TRICARE Approach
  - ▣ Recommendations

# Current Challenges in ABA Intervention Monitoring

- ▣ BCBA's want to provide great ABA service to patients
  - ▣ Assessment activities are not a major focus of training
  - ▣ Service requests conflate clinical with business interests
- ▣ Assessment processes lack standardization, are cumbersome, prone to error, and legacy measures were not purpose built
- ▣ ABA businesses tend to be break-even, with substantial turnover, and clinicians and families carry substantial burdens
  - ▣ Need for automation, burden reduction, clinical decision support, etc.

# Identifying What Matters to Patients / Families

Most currently-available and currently-used clinical measures were not specifically developed for ASD / NDD populations

Many did not use concept elicitation or cognitive interviewing processes or stakeholder engagement

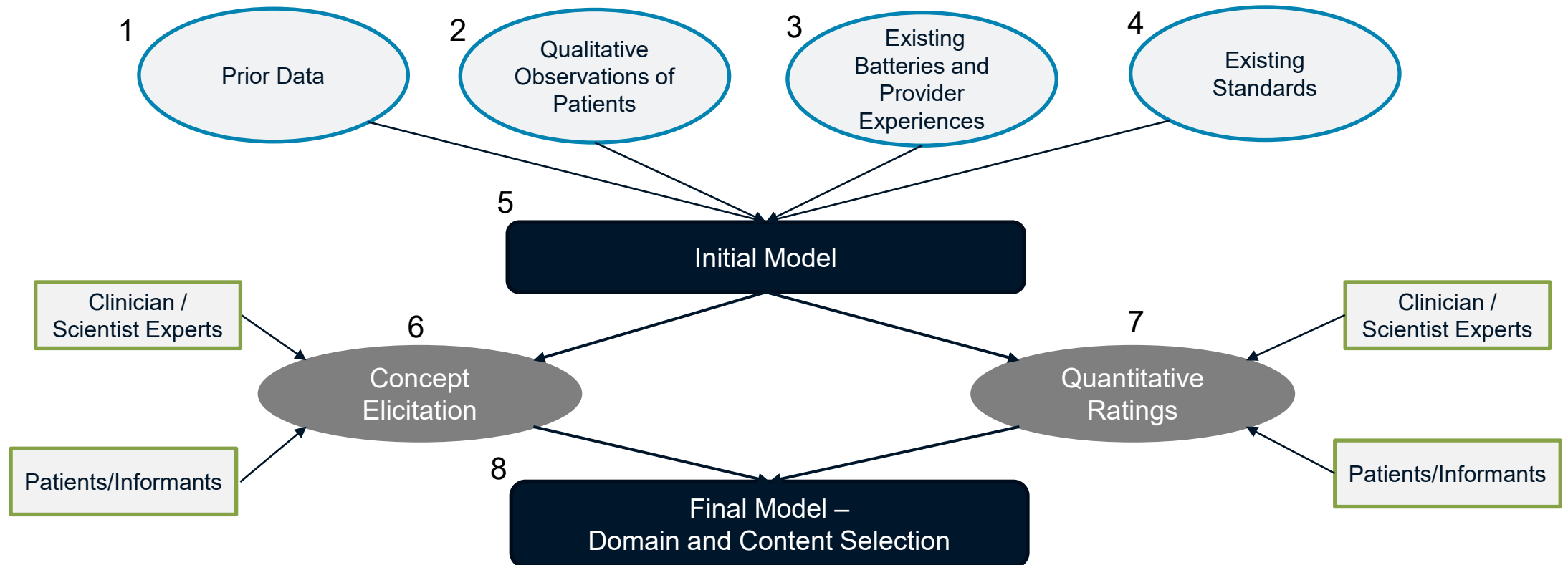
Boateng GO, Neilands TB, Frongillo EA, Melgar-Quinonez HR, Young SL. Best Practices for Developing and Validating Scales for Health, Social, and Behavioral Research: A Primer. *Front Public Health*. 2018;6:149.

Many include items / scales that are not relevant to the full population and/or represent domains or areas of treatment excluded from the TRICARE ACD policy

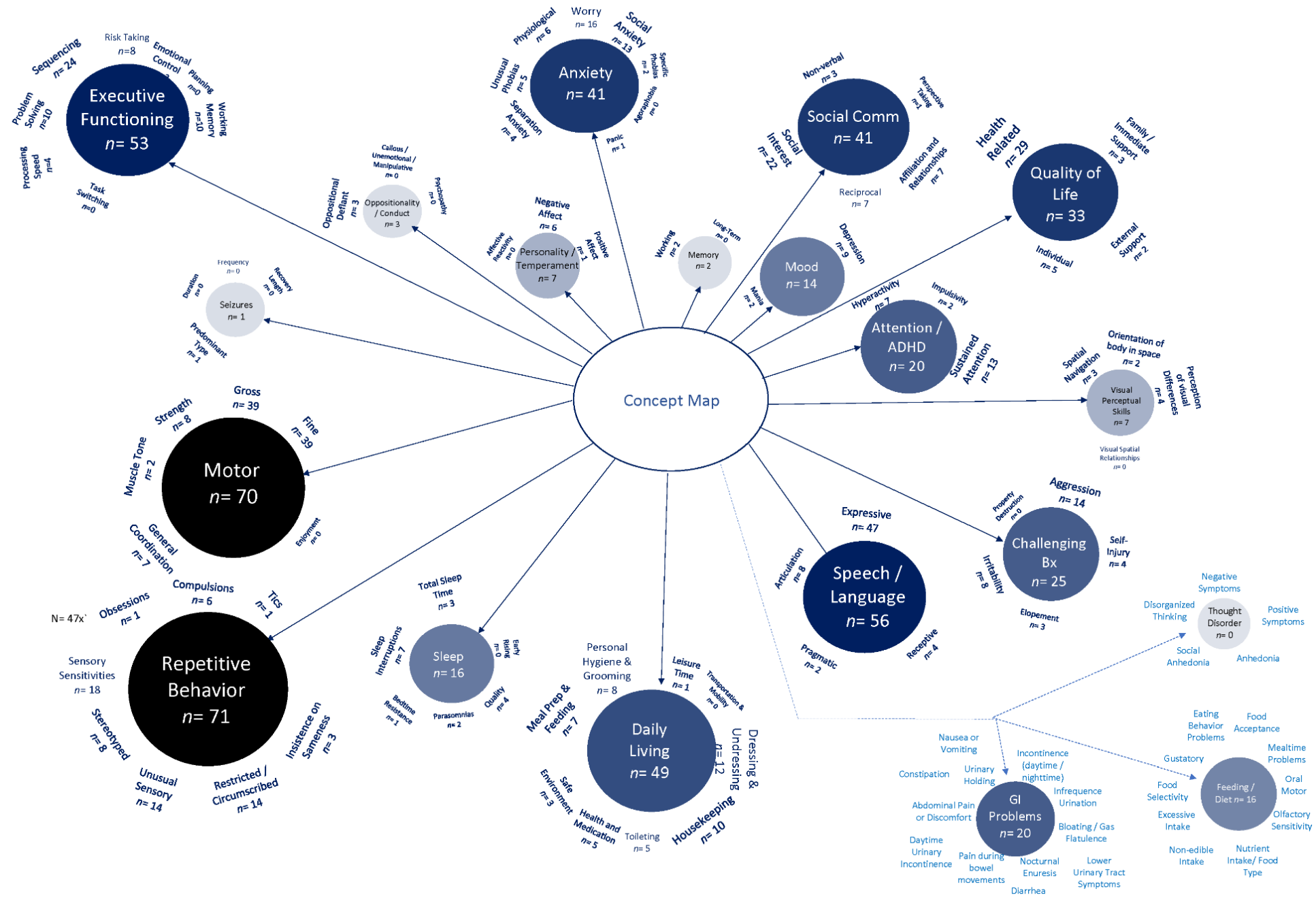
- Non-verbal / non-speaking people
- Moderate to profound cognitive impairment
- Floor is not low enough

FDA. (2009). *Patient-reported outcome measures: use in medical product development to support labeling claims*. (United States Food and Drug Administration, Guidance for Industry. <https://www.fda.gov/downloads/drugs/guidances/ucm193282.pdf>

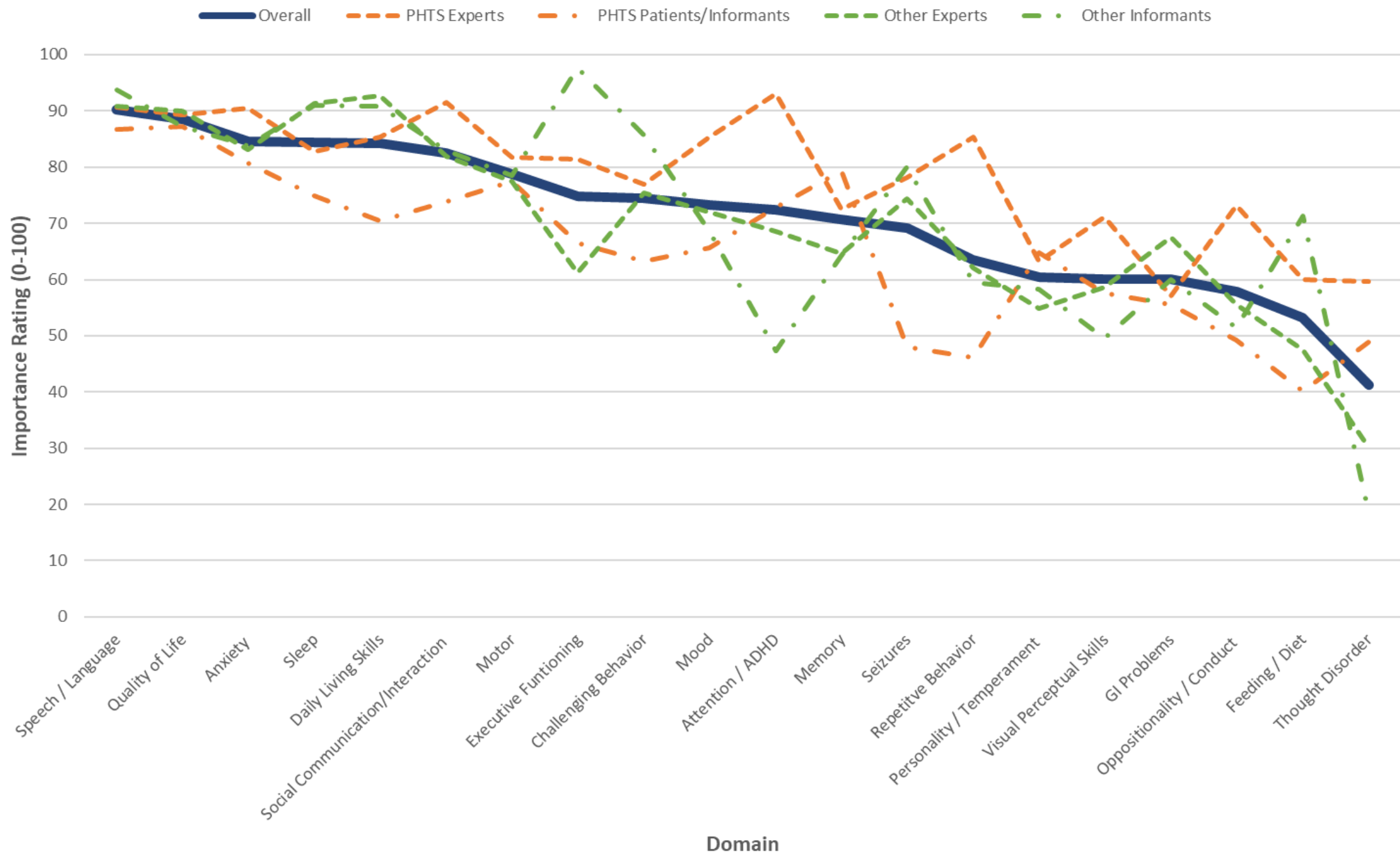
# A Process for Determining What to Measure



Frazier TW et. al. Development of informant-report neurobehavioral survey scales for PTEN hamartoma tumor syndrome and related neurodevelopmental genetic syndromes. *Am J Med Genet A*. 2023;191(7):1741-1757.







**ASD and NDGS**

**Neurobehavioral Function**

**Mood**

**Motor**

**Executive  
Functioning**

**Social  
Communication**

**Repetitive  
Behavior**

**Anxiety**

**Challenging  
Behavior**

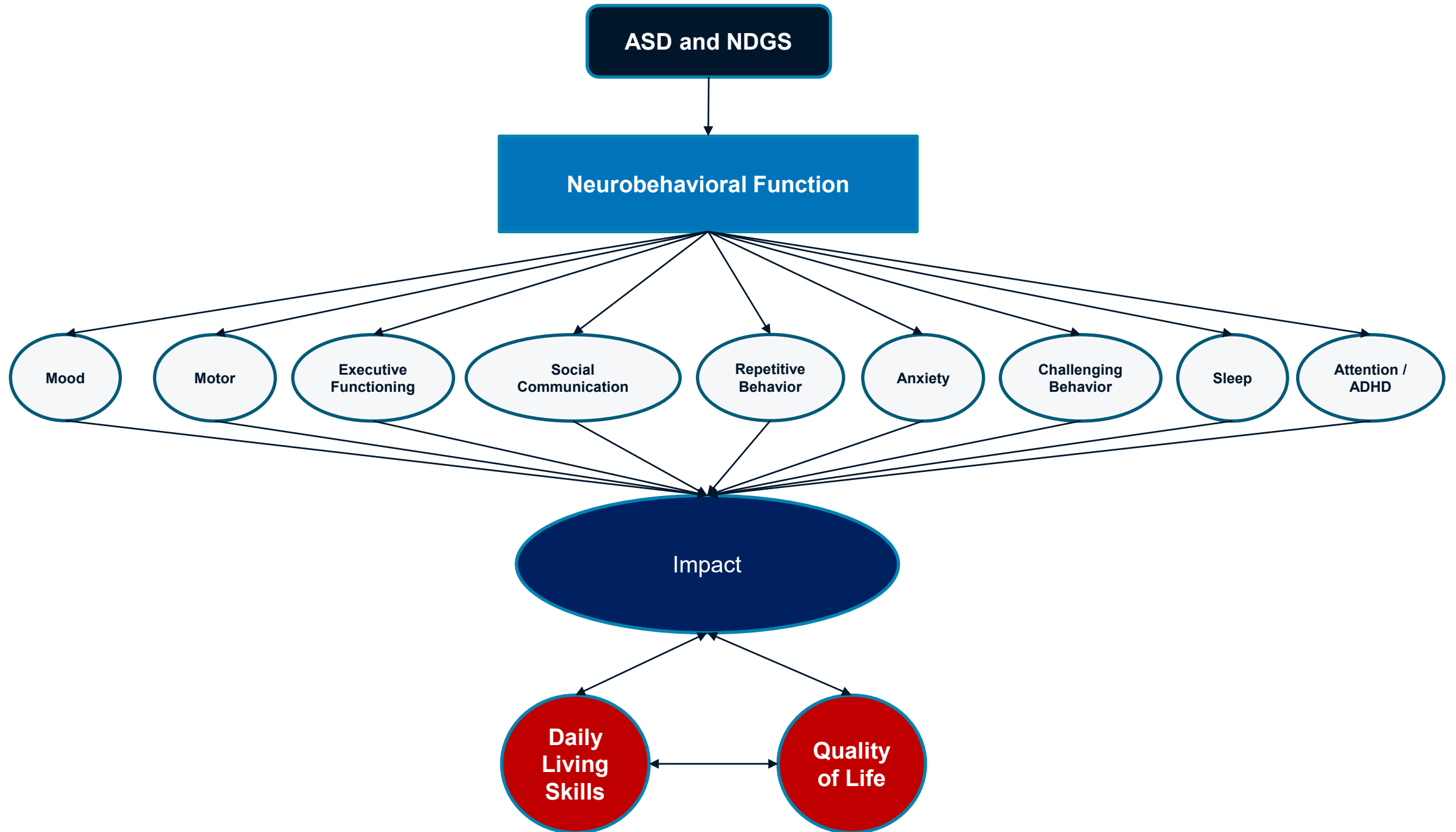
**Sleep**

**Attention /  
ADHD**

**Impact**

**Daily  
Living  
Skills**

**Quality  
of Life**



# Domains / Constructs to Consider for ABA Outcome Assessment

Autism Symptoms	Functioning	Other Concerns	Well-Being
Social Communication / Interaction	Daily Living Skills / Practical Functioning	Anxiety	Satisfaction with Therapy
Restricted/Repetitive Behavior	Motor Skills	Attention / ADHD	Quality of Life / Flourishing
ASD Subdomains	Leisure Skills	Irritability / Challenging Behavior	External Environmental Supports
	Executive Functioning	Mood / Affective Experience	Access to Medical and Behavioral Health Services
	Language / Speech	Sleep Problems	
	Family Functioning	GI Problems	
		Feeding Challenges	

# Modern Understanding of Core ASD Symptoms

## Social Communication / Interaction

- Basic social communication (verbal and non-verbal)
- Social motivation / affiliation
- Perspective taking
- Relationships

Phillips JM, et. al. *Mol Autism*. 2019;10:48.

Uljarevic M. et. al. *J Am Acad Child Adolesc Psychiatry*. 2020;59(11):1252-1263 e1253.

## □ Restricted / Repetitive Behavior

- Repetitive motor and speech
- Insistence on sameness
- Restricted interests
- Sensory interests
- Sensory sensitivities

Uljarevic M. et. al. *J Clin Child Adolesc Psychol*. 2021;50(5):609-618.

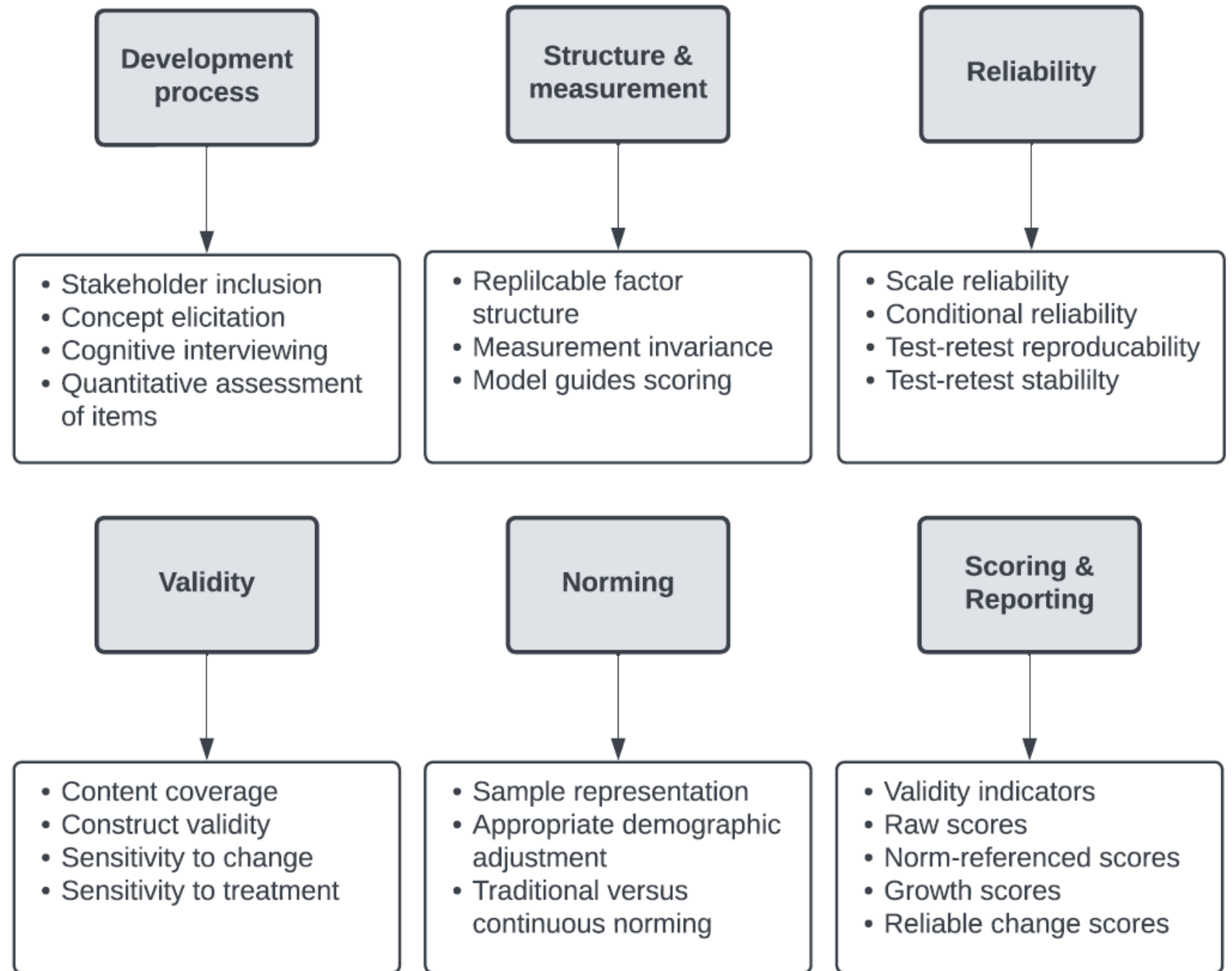
Frazier TW, et. al. *Autism*. 2017;21(6):749-759.

Uljarevic M, et. al. *J Am Acad Child Adolesc Psychiatry*. 2023;62(5):568-581.

Uljarevic M. et. al. *J Am Acad Child Adolesc Psychiatry*. 2022;61(3):446-457.

Frazier TW, *Autism*. 2014;18(1):31-44.

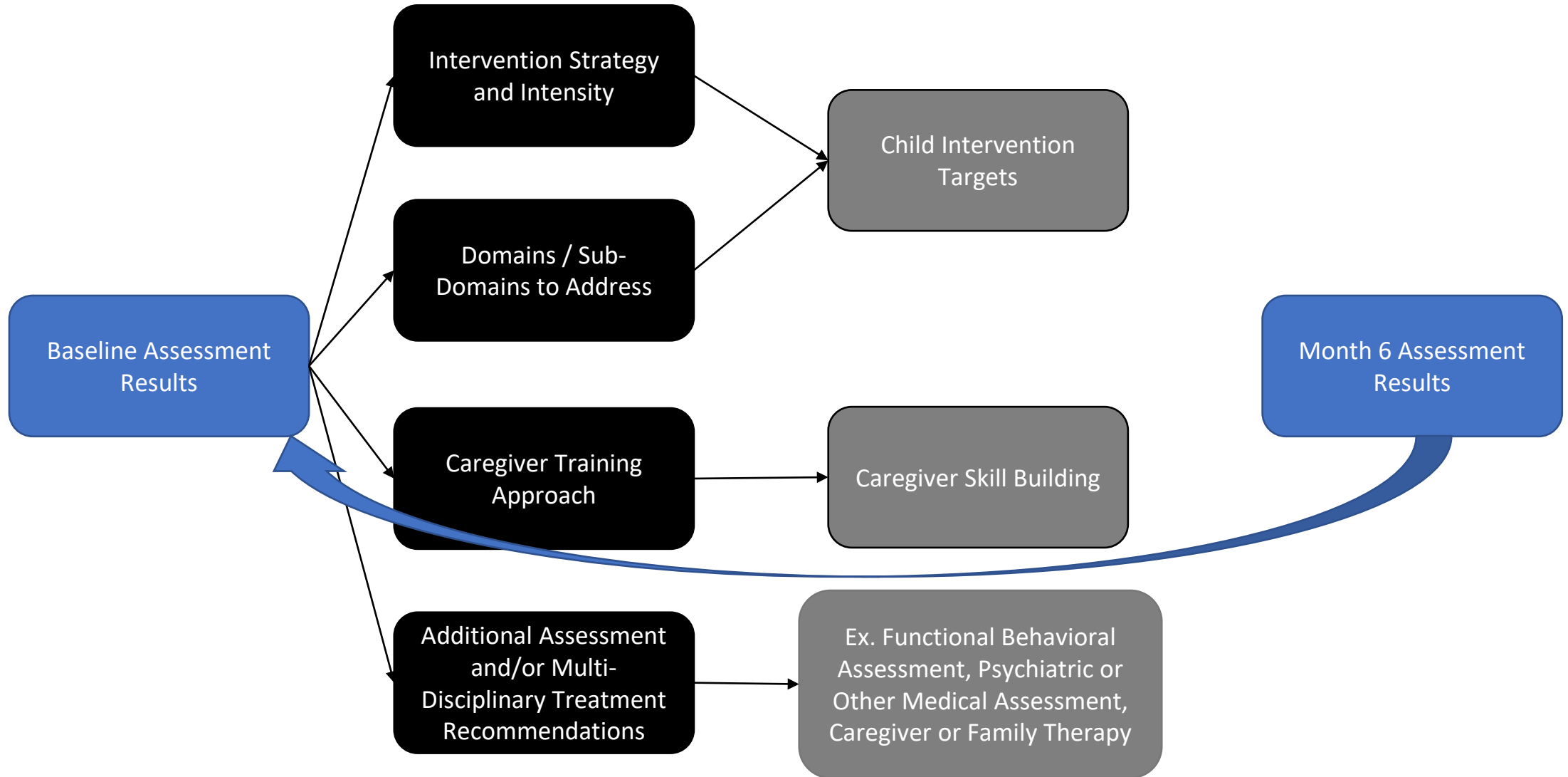
# Proposed Psychometric Criteria for Outcome Measure Prioritization

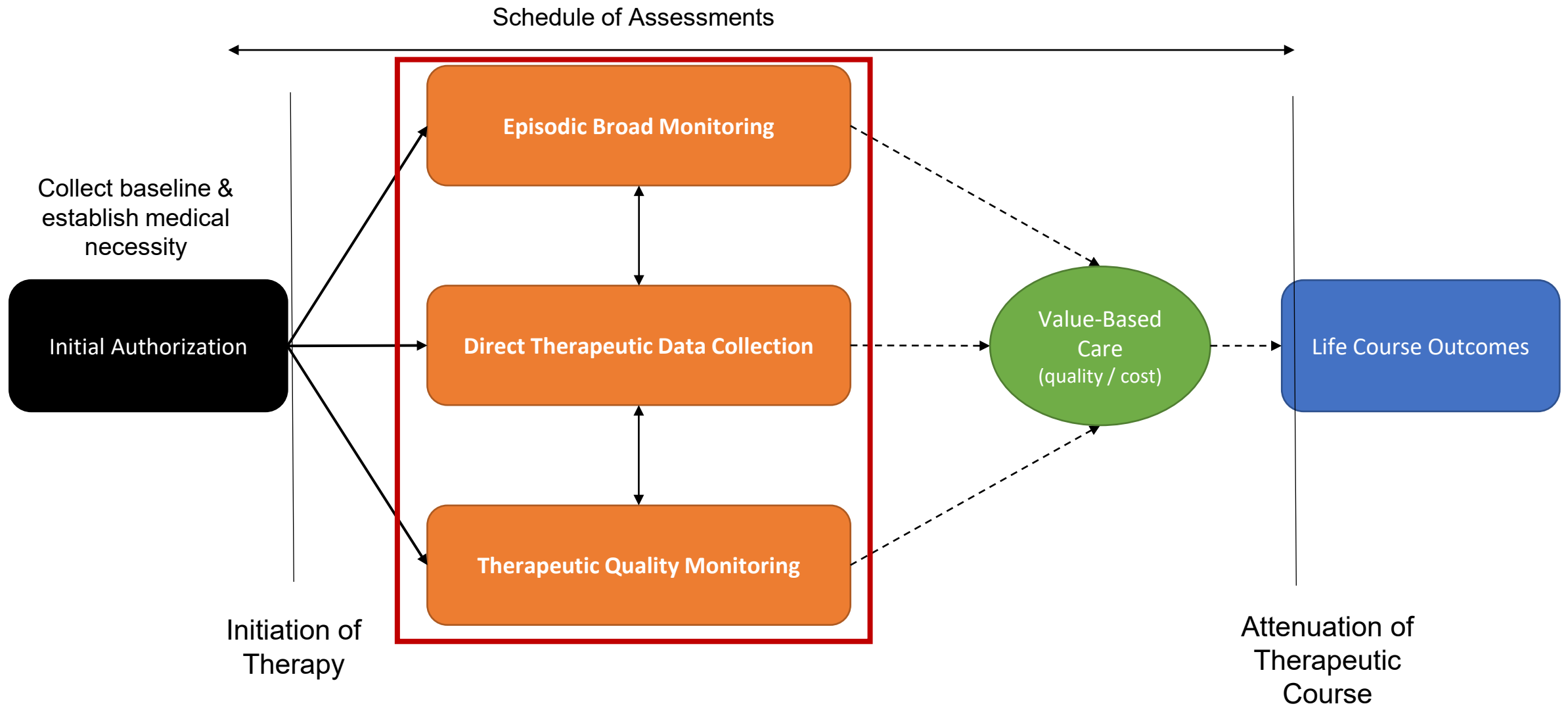


# Proposed Practical Criteria

- i. Automated administration
- ii. Automated scoring
- iii. Visual display of measure results
- iv. Automated interpretative statements, with clinician selection/modification
- v. Automated connection of results with intervention target identification, with clinician selection/addition/modification
- vi. Automated clinical guidance for additional assessment, intervention strategy, and referral with clinician selection/modification
- vii. Automated progress monitoring
- viii. Connection of target identification with goals/objectives and teaching plan selection
- ix. Aggregation of measures and reporting to facilitate clinical workflow

# Assessment-Driven Treatment





To achieve value-based care, a highly-effective outcome assessment system should capture all 3 types of data to inform therapeutic progress and the clinical quality improvement process with the ultimate purpose being the enhancement of life course outcomes



# Current Limitations of the DoD / TRICARE Outcome Assessment Battery

Vineland-3, PDDBI, SRS-2, PSI-4-SF/SIPA were not purpose-built for this population

- Stakeholders had limited to no involvement in their development
- Unknown or poorly replicated factor structure to inform scoring  
*Farmer RL, et. al. Assessment. 2021;28(7):1848-1864.*
- Unknown or limited evidence of measurement invariance, key for diverse patient populations  
*Frazier TW, et. al. Autism. 2014;18(1):31-44.*
- Limited construct validity evidence  
*McMorris CA, Perry A. Autism. 2015;19(3):272-280.*
- Items that are not appropriate for typical ABA patient population
  - Require speech, lack consideration of SGD use
  - Frustrating for parent/caregiver informants when ask about higher-level skills that are not relevant to the child
  - Quality of life is not a narrow construct and can be used to inform the treatment strategy

# Current Limitations of the DoD / TRICARE Outcome Assessment Battery (cont.)

## Battery Has Weak Construct Coverage

- Do not adequately assess all of core autism sub-domains that have been identified
  - Social motivation, sensory sensitivity, sensory interests
- Construct overlap
  - Example. Basic social communication over-sampled
- Limited neurobehavioral construct coverage
  - ADHD, anxiety, mood/irritability, challenging behavior, sleep, or quality of life domains poorly or not at all assessed

**Very Few of the Practical Criteria Addressed**  
**Difficult to Implement Assessment-Driven Treatment**

# Recommendations

- ▣ Identify a battery of psychometrically-sound measures appropriate for ABA population
  - ▣ Stakeholder engagement: domain -> sub-domain -> measure evaluation -> measure implementation
- ▣ Identify a processes for administration, scoring, interpretation, longitudinal monitoring, and decision-support that minimize practice variability and implements assessment-driven intervention
  - ▣ Invest in a system to ensure that practical considerations are met
- ▣ Engage in continuous quality improvement of the assessment process and system
  - ▣ Build administrator functionality to provide a real-time window into service delivery with the DoD/TRICARE network



# THANK YOU

Thomas Frazier  
tfrazier@jcu.edu