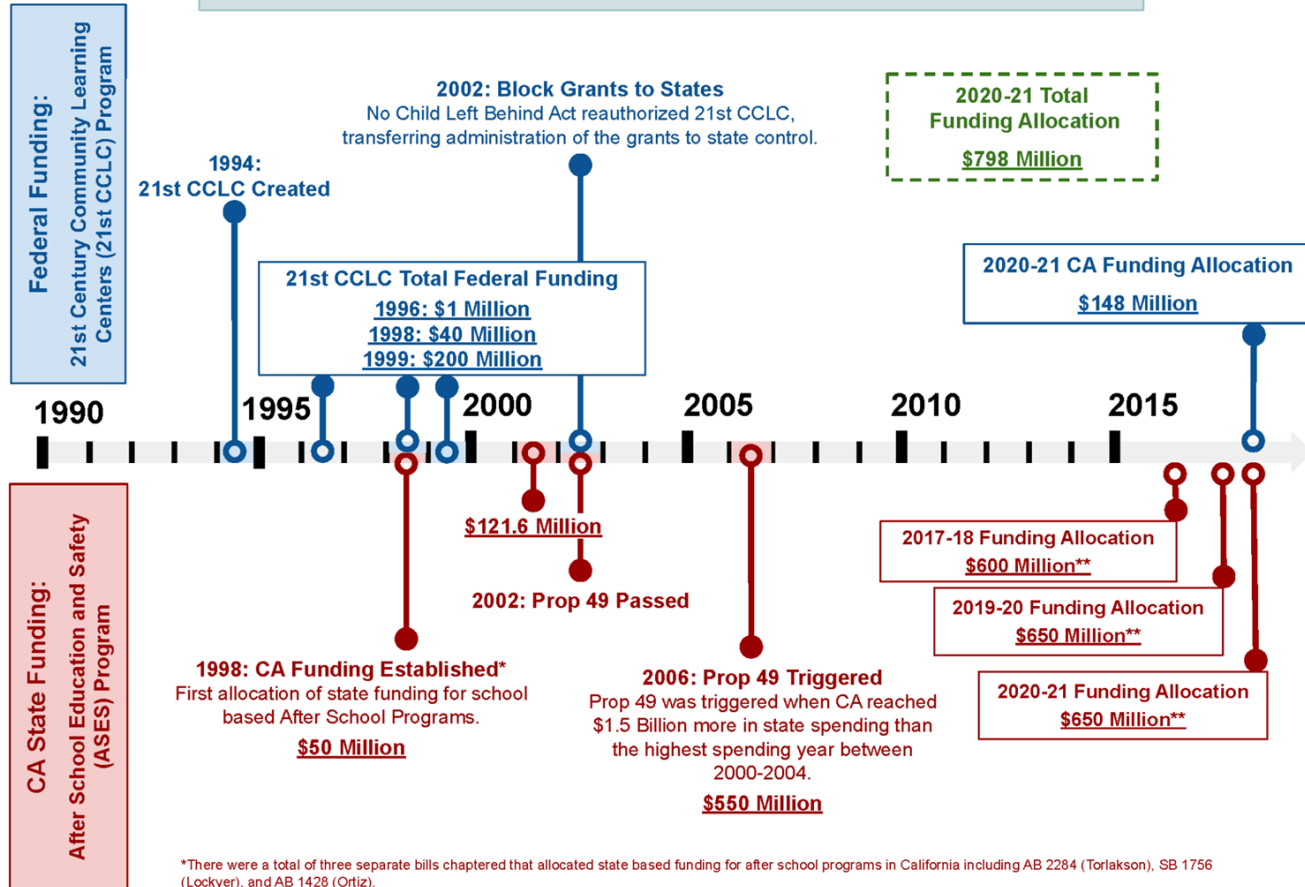


# Expanded Learning In California

National Academies  
October 19, 2023

## California Publicly Funded After School Programs: Funding History

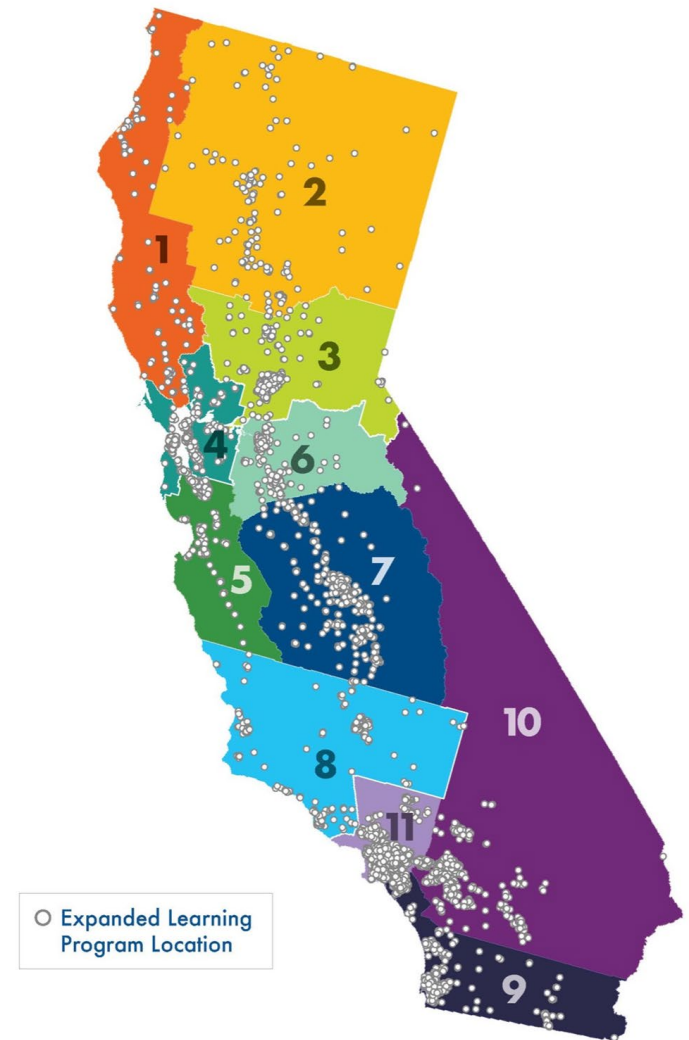


# California's Programs

## VISION:

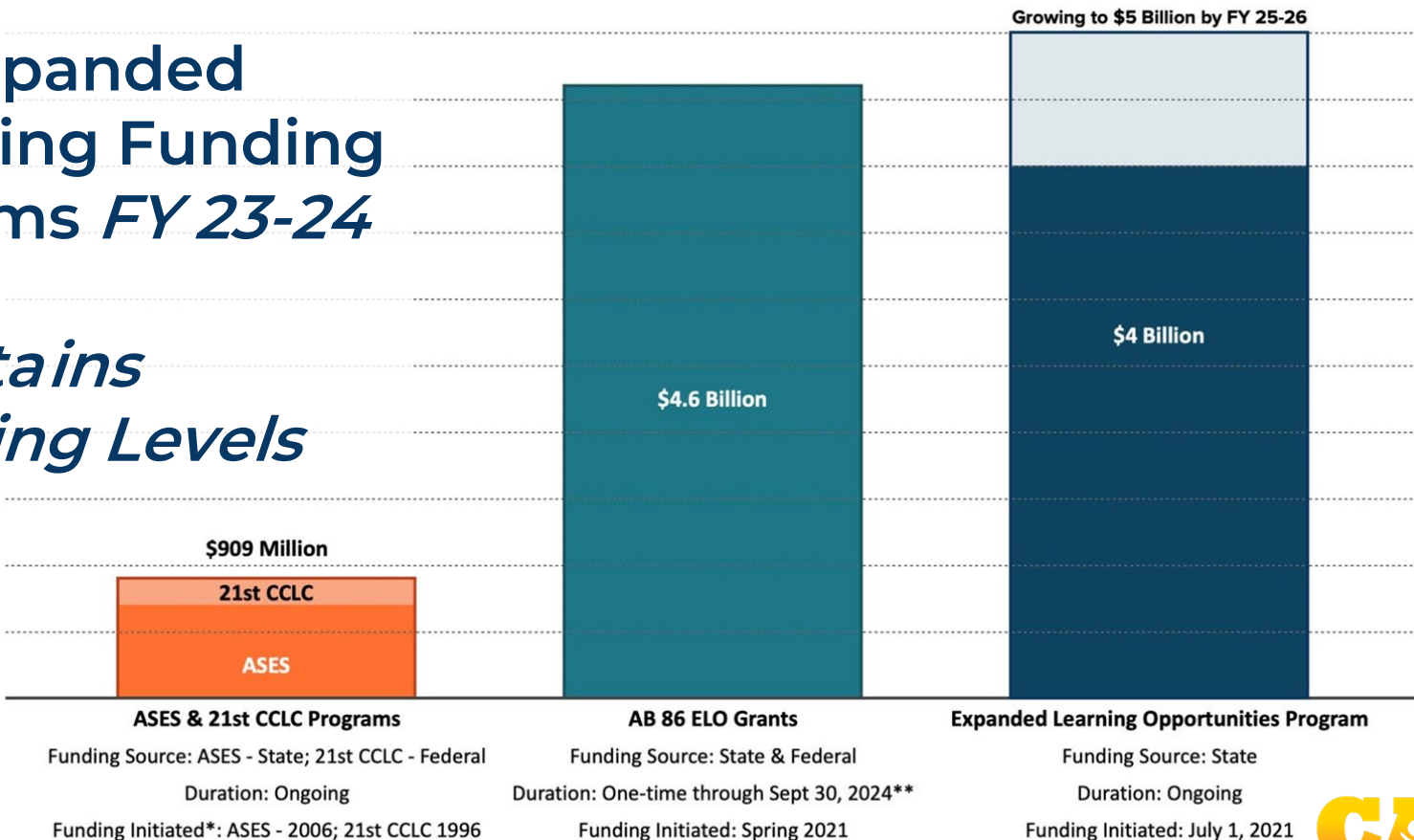
*Expanded Learning Programs are an integral part of young people's education, engaging them in year-round learning opportunities that prepare them for college, career, and life.*

Pre-Pandemic the state-funded After School Education and Safety (ASES) program and federally-funded 21st Community Learning Center (21st CCLC) program operated at over **4,500 sites with over 980,000 students** enrolled. The vast majority (85%) funded exclusively by the state.



# CA Expanded Learning Funding Streams *FY 23-24*

*Maintains Funding Levels*



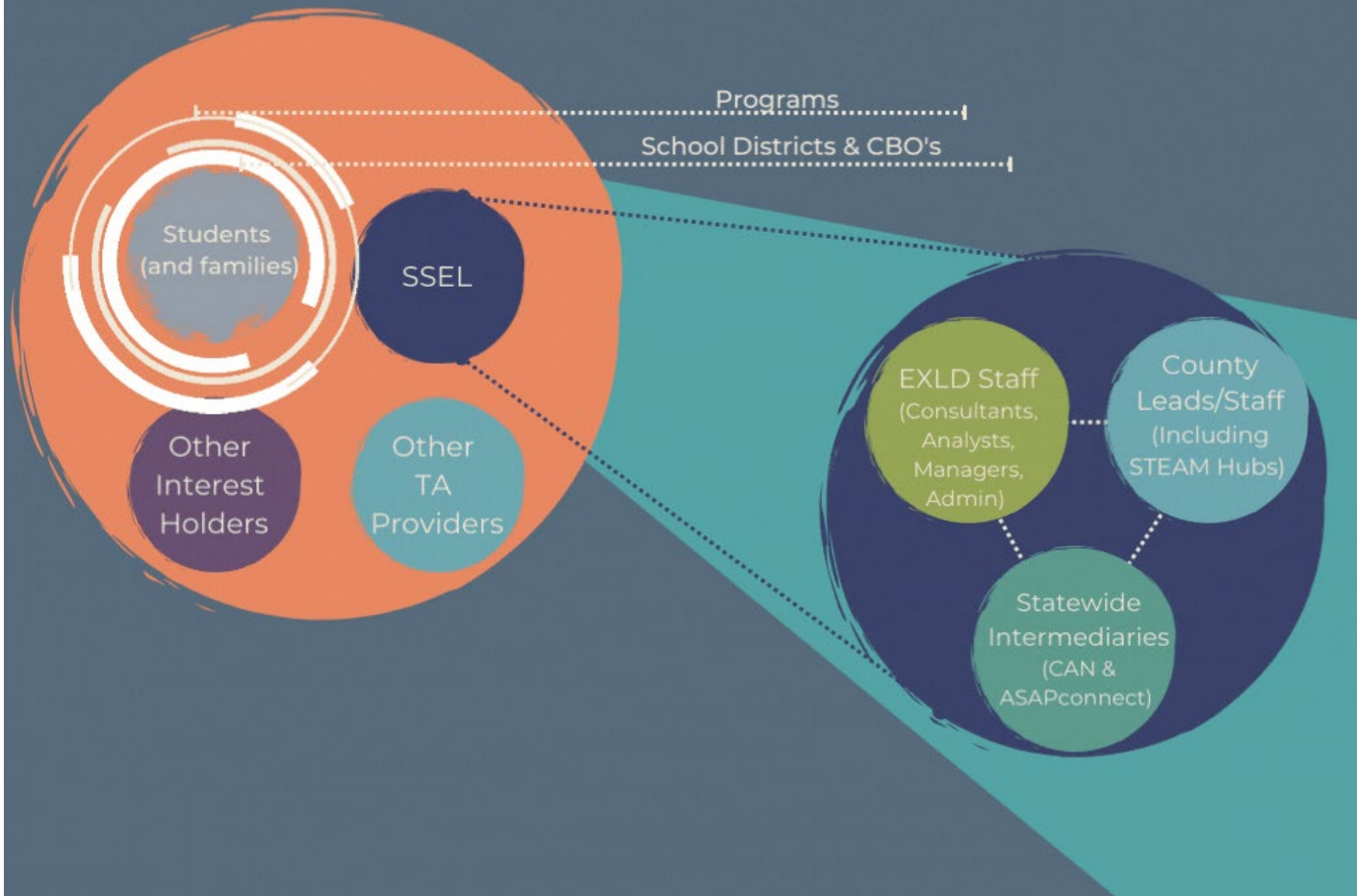
*\*Initiated refers to the first year that funding was released. Programs were created in earlier legislation and ASES evolved out of an earlier state-funded after school program established in 1998.*

*\*\*Funded through 2 state resource codes and 4 federal resource codes with different expenditure dates and reporting requirements. Can be utilized Expanded Learning supports as well as other learning recovery strategies.*



CONNECT. CONVENE. INSPIRE.

# Expanded Learning Ecosystem



# The Quality Standards for Expanded Learning in California

*High quality programs  
create conditions that  
support positive  
developmental outcomes  
consistent with the  
Science of Learning and  
Development.*



## Quality Standards for Expanded Learning in California:

*Creating and Implementing a Shared Vision of Quality*

### CONTENTS

INTRODUCTION / BACKGROUND	3
DESCRIPTION OF STANDARDS AND CROSSWALK	4
RECOMMENDED USES	5
QUALITY STANDARDS IN ACTION	6
SUMMARY OF WORK GROUP PROCESS	19
WORK GROUP PARTICIPANTS	20
GLOSSARY OF TERMS	21
REFERENCES	22



*"This bold initiative provides a  
road map for improving expanded  
learning throughout California."*

**- Tom Torlakson**

Superintendent of Public Instruction

**FINAL RELEASE: SEPTEMBER 2014**

Informed by Expanded Learning stakeholders  
and practitioners, and produced in collaboration  
between the California Department of  
Education, After School Division, and  
the California AfterSchool Network.

# The Quality Standards for Expanded Learning in California

## Point-of-Service Quality Standards

- 1 Safe and supportive environment**  
The program provides a safe and nurturing environment that supports the developmental, social-emotional and physical needs of all students. [Page 7](#)
- 2 Active and engaged learning**  
Program design and activities reflect active, meaningful and engaging learning methods that promote collaboration and expand student horizons. [Page 8](#)
- 3 Skill building**  
The program maintains high expectations for all students, intentionally links program goals and curricula with 21st-century skills and provides activities to help students achieve mastery. [Page 9](#)
- 4 Youth voice and leadership**  
The program provides and supports intentional opportunities for students to play a meaningful role in program design and implementation, and provides ongoing access to authentic leadership roles. [Page 10](#)
- 5 Healthy choices and behaviors**  
The program promotes student well-being through opportunities to learn about and practice balanced nutrition, physical activity and other healthy choices in an environment that supports a healthy life style. [Page 11](#)
- 6 Diversity, access and equity**  
The program creates an environment in which students experience values that embrace diversity and equity regardless of race, color, religion, sex, age, income level, national origin, physical ability, sexual orientation and/or gender identity and expression. [Page 12](#)

## Programmatic Quality Standards

- 7 Quality staff**  
The program recruits and retains high quality staff and volunteers who are focused on creating a positive learning environment, and provides ongoing professional development based on assessed staff needs. [Page 13](#)
- 8 Clear vision, mission and purpose**  
The program has a clearly defined vision, mission, goals, and measurable outcomes that reflect broad stakeholder input and drive program design, implementation and improvement. [Page 14](#)
- 9 Collaborative partnerships**  
The program intentionally builds and supports collaborative relationships among internal and external stakeholders, including families, schools and community, to achieve program goals. [Page 15](#)
- 10 Continuous quality improvement**  
The program uses data from multiple sources to assess its strengths and weaknesses in order to continuously improve program design, outcomes and impact. [Page 16](#)
- 11 Program management**  
The program has sound fiscal and administrative practices supported by well-defined and documented policies and procedures that meet grant requirements. [Page 17](#)
- 12 Sustainability**  
The program builds enduring partnerships with the community and secures commitments for in-kind and monetary contributions. [Page 18](#)



# CAN's Quality System

## Resources to Support an Equitable Approach to Quality and CQI in Expanded Learning



This document provides an overview of resources and strategies to support a **comprehensive and equitable approach to Quality and Continuous Quality Improvement (CQI)** for Expanded Learning and other Out-of-School Time (OST) programs.

It provides an overview and description of how to use CAN's Quality System consisting of three resources to support the CQI process:

- A New Quality Assessment Tool (QAT) – Coming Soon!
- An Online Quality Assessment System – Coming Soon! (*this system is in beta testing*)
- A CQI Guidebook - Coming Soon!

[tinyurl.com/CANQualSystem](https://tinyurl.com/CANQualSystem)





# Defining Equity Work Group

- Co-Led by CDE & Field
- The group met from Nov 2014 - Sept 2015.
- Focused on defining equity in grant eligibility and award distribution for state ASES and federal 21st CCLC programs.

The groups work resulted in 6 funding buckets:

- North Rural
- North Urban
- Central Rural
- Central Urban
- South Rural
- South Urban

