



the
forum
FOR YOUTH INVESTMENT

**Promoting Learning & Development in High Quality OST
Settings for Low-Income and Marginalized Children & Youth**

Dr. Kimberly H. Robinson

October 19, 2023



Young people need to feel **safe and
supported to learn and thrive.**

Quality is more than CONTENT

Features of Positive Developmental Settings

(NRC Community Programs that Promote Youth Development, 2002)

- Physical and psychological safety
- Appropriate structure
- Supportive relationships
- Opportunities to Belong
- Positive Social Norms
- Supports for Efficacy and Matterering
- Opportunities for Skill Building
- Integration of Family, School and Community Efforts

The Pyramid of Program Quality

describes characteristics of settings that support positive youth development



Elements of the Youth Program Quality Improvement Approach

Our continuous quality improvement approach is made up of **4 Core Practices**



1 quality assessment

2 improvement planning

3 coaching by site leaders to support staff practice

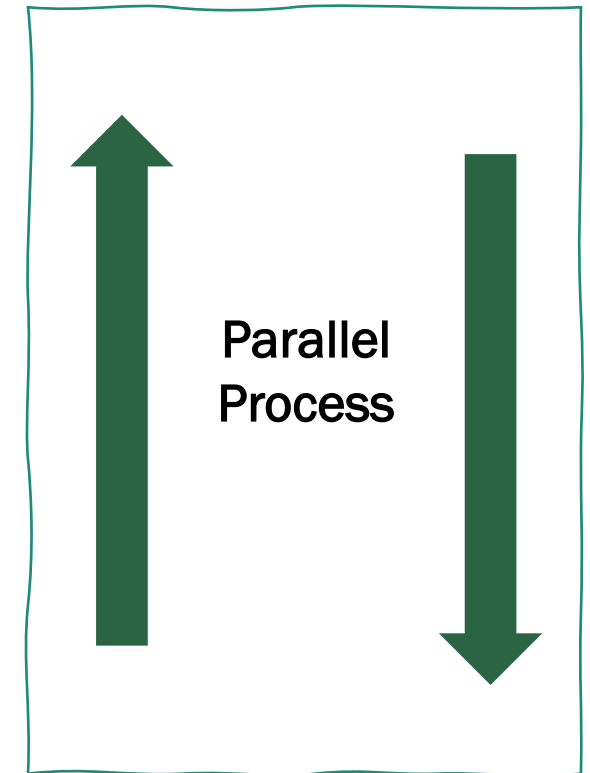
4 staff attendance at targeted trainings for professional skill building

Quality experiences matter for young people AND for staff

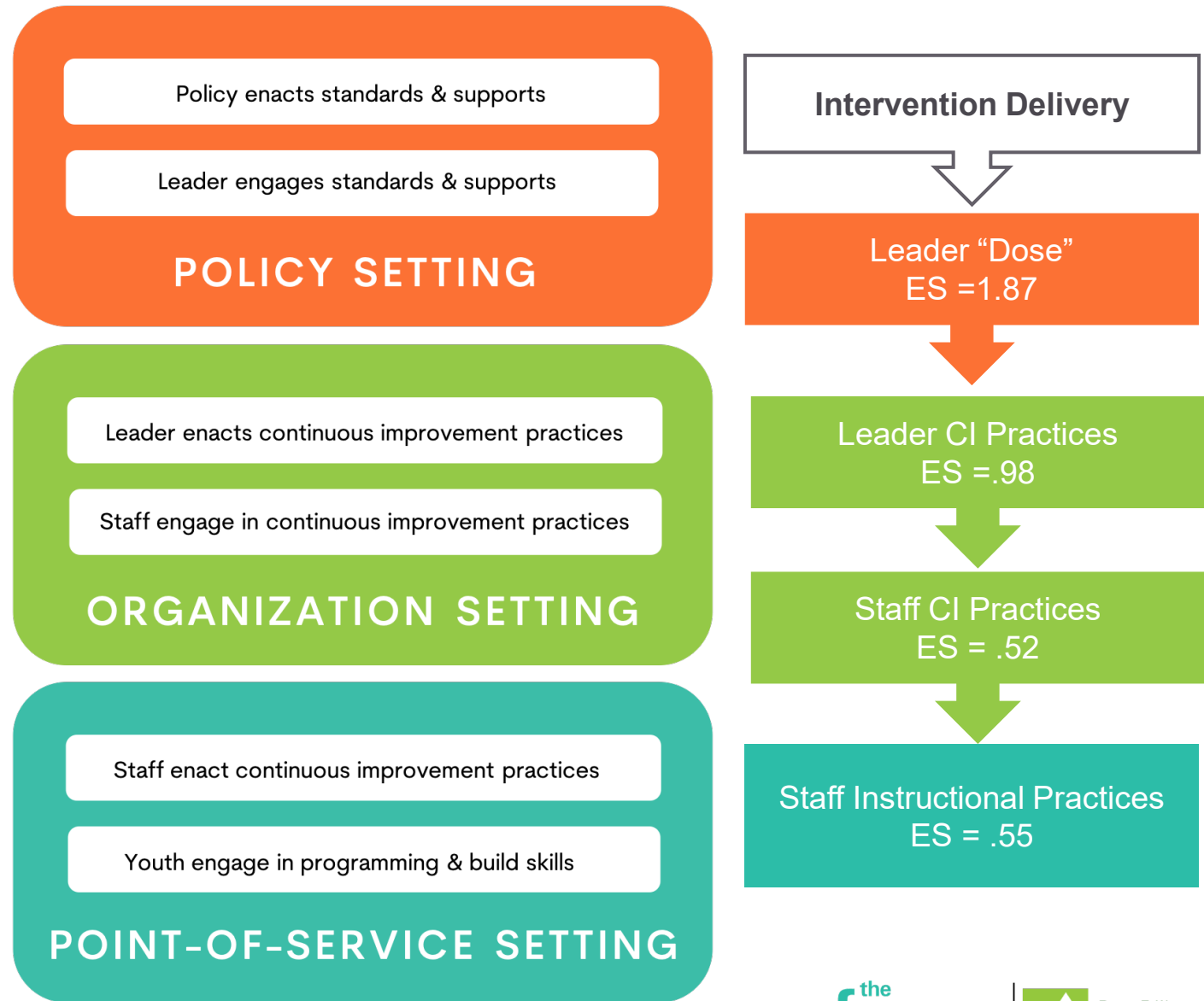
Young people (especially those who have been **marginalized**) embrace their potential when they feel:

- Safe
- Supported
- Respected
- Seen and heard
- Challenged
- Allowed to use all the assets they bring

Staff (even those who are older youth) create potential in environments where they feel the same things.

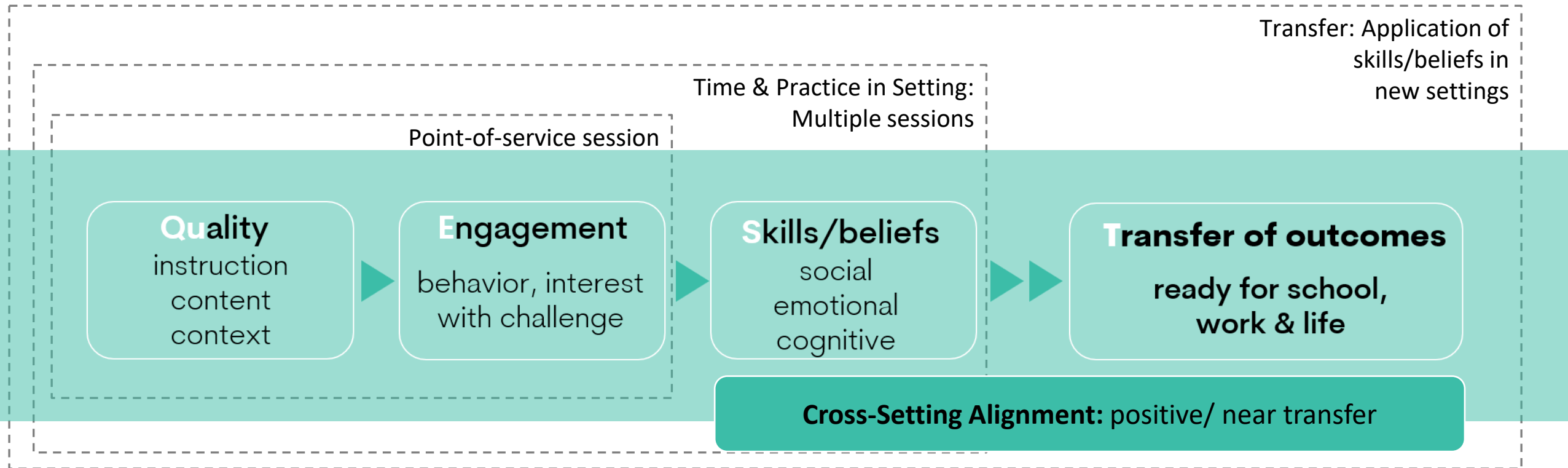


The parallel process operates throughout multiple levels of youth serving systems



How does Quality impact Outcomes?

The QuEST model



Focusing on Program Quality Supports How Learning Happens.

