

# US-MEX WORKSHOP SESSION ON SHOCKS AND STRESSORS

---

Jorge Damián Morán Escamilla

Cátedras-Conacyt

El Colegio de San Luis

WHAT SHOCKS ARE OF  
GREATEST CONCERN TO  
YOUR ORGANIZATION/THE  
REGION AT LARGE?

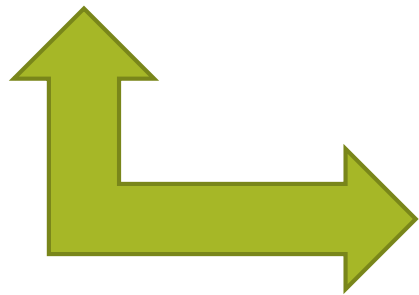
---

# Risk & Disasters

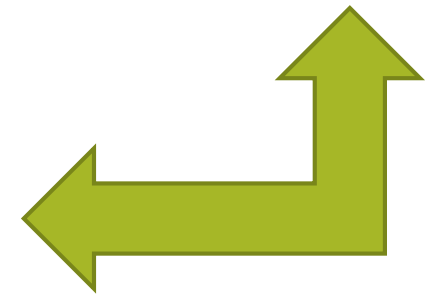
Human  
Security



Sinaproc



Landscape



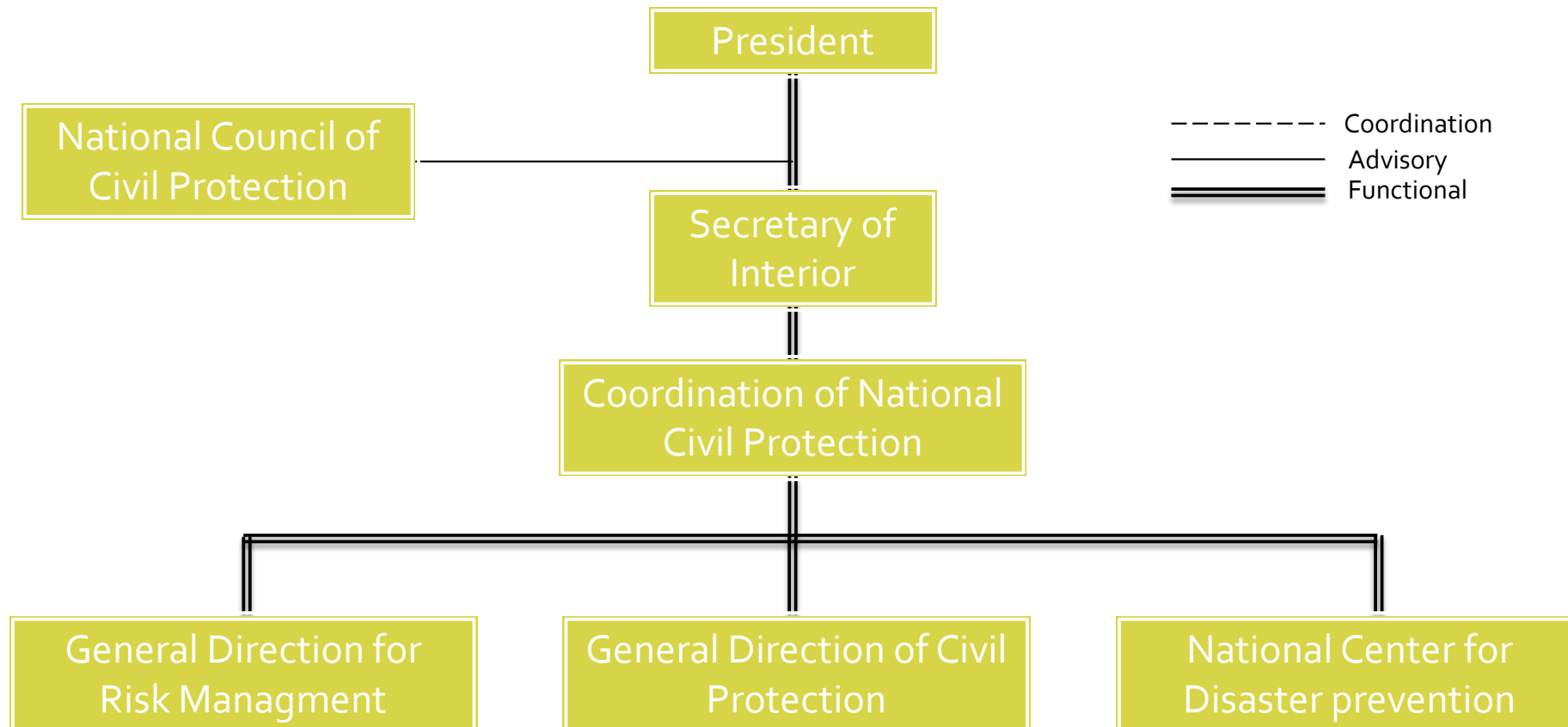
# Landscape

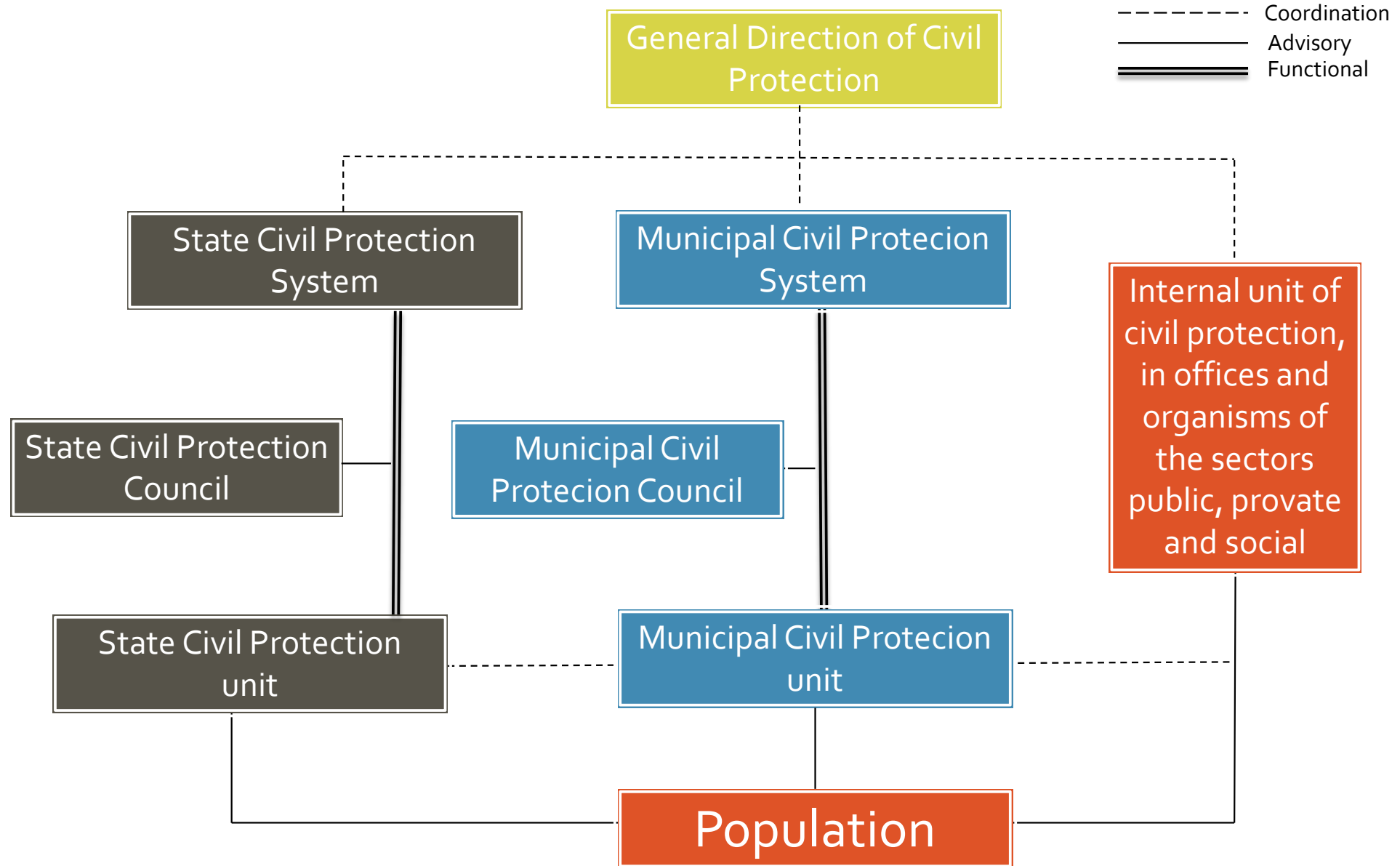


## Transformations of space

- Land uses
- Changes in economics activities and productive processes
- Intensification in the use of natural resources
- Air, water and soil pollution
- Change in consumption patterns and population activities
- Loss and migration of endemic species
- Ecosystem services deterioration (Regulation, provision, support and cultural)
- Vulnerability mutation and population at risk
- Loss of local knowledge and environment
- Transformations at great speed

# Sistema Nacional de Protección Civil (National Civil Protection System)

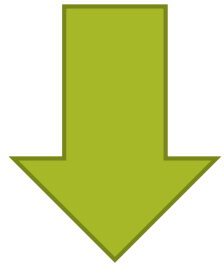






# Na-tecs

# Risk



# Multiple Threats



Photo: REUTERS

# Human Security

## Freedom from fear

Threats elimination and use of  
force and violence

## Freedom from needs

Economic, food, social,  
health, environmental and  
political needs



# Framework for the promotion of human security



# Possible Threats

1. Constant poverty (economic security)

2. Hunger (food safety)

3. Infectious diseases, unsafe food, malnutrition or lack of access to basic health care (sanitary security)

4. Environmental degradation, depletion of natural resources, disasters and pollution (environmental security)

5. Violence, crimes, terrorism, child labor (personal security)

6. Ethnic or religious tensions and others community problems (community security)

7. Police abuse, violations of human rights (political security)

# Summarizing

- Vulnerability and risks represent acumulative conditions, as result of changes in: landscape, production process, social relations and how society makes use of nature, which affect human security
- Therefore, a natural phenomenon can generate scenarios of multiple threats with highly disruptive effects
- The problem is that these threats and vulnerability are progressively assimilated into daily life, making the potential risk invisible
- It should be noted that the cost of disasters is increasing, causing setbacks in the quality of life of people
- The interventions are not coordinated and simply focus on getting out of the situation, to reactivate the daily tasks, without promoting the development