



**Imagining 20 Years Forward So We Thrive
40-60-80 Years Forward and Beyond:**

**Returning Learning and Childhood to and
with Lands & Waters**



Central Possibility & Challenge of the 21st Century: HUMAN MATURATION

Part 1: Core Cognitive Models of Human Relationships with the Natural World

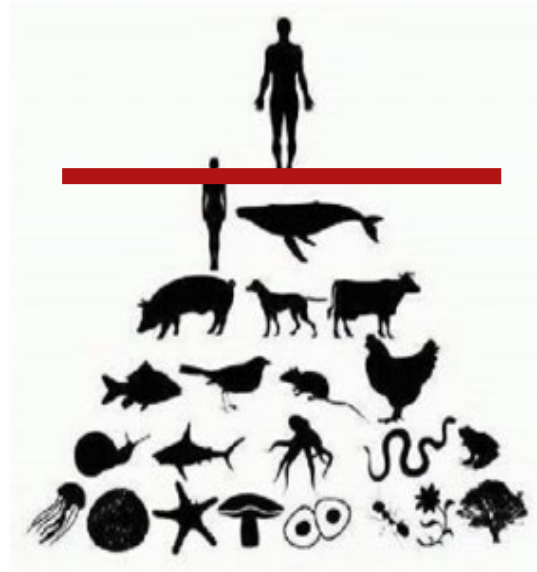
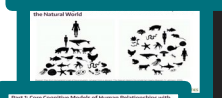
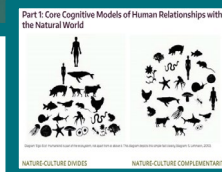


Diagram 'Ego-Eco'-Humankind is part of the ecosystem, not apart from or above it. This diagram depicts this simple fact clearly (diagram: S. Lehmann, 2010).

Apart from



A part of



Coloniality, Racial Capitalism, and Militarism have facilitated the global domination of “Apart from” models.

Live: March Madness Israel-Hamas war Moscow concert hall shooting Kate Middleton cancer

CLIMATE

UN weather agency issues 'red alert' on climate change after record heat, ice-melt increases in 2023



United Nations

UN News

Global perspective Human stories

Search

Advance

Home

Topics

In depth

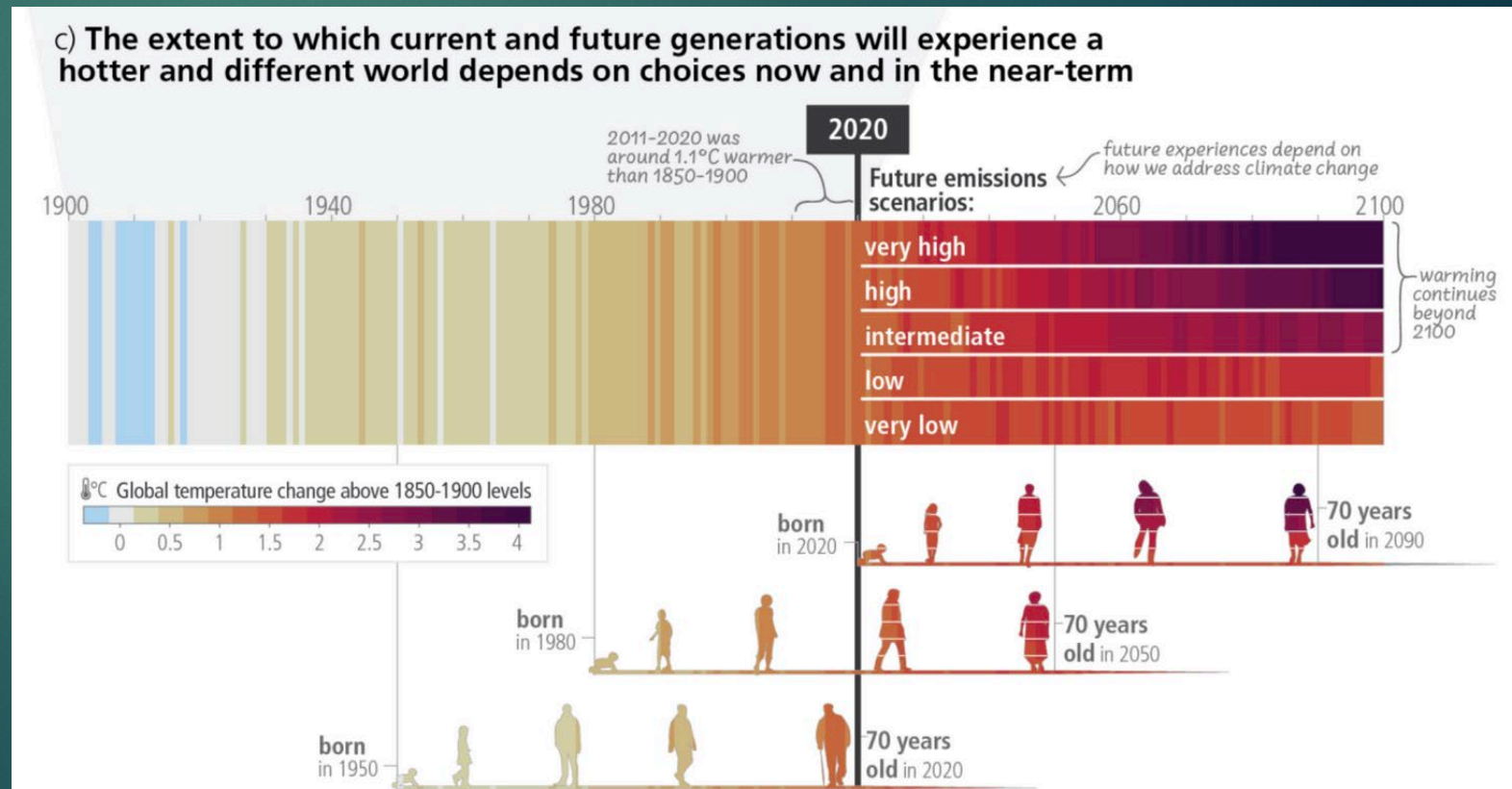
Secretary-General

Media

AUDIO HUB SUBSCRIBE

A liveable future for all is possible, if we take urgent climate action: flagship UN report

The social and ecological conditions of life are fundamentally changing.





What should the Purpose/s of [SCIENCE]
Education Be?

Cultivating Just, Sustainable, and Culturally
Thriving Life

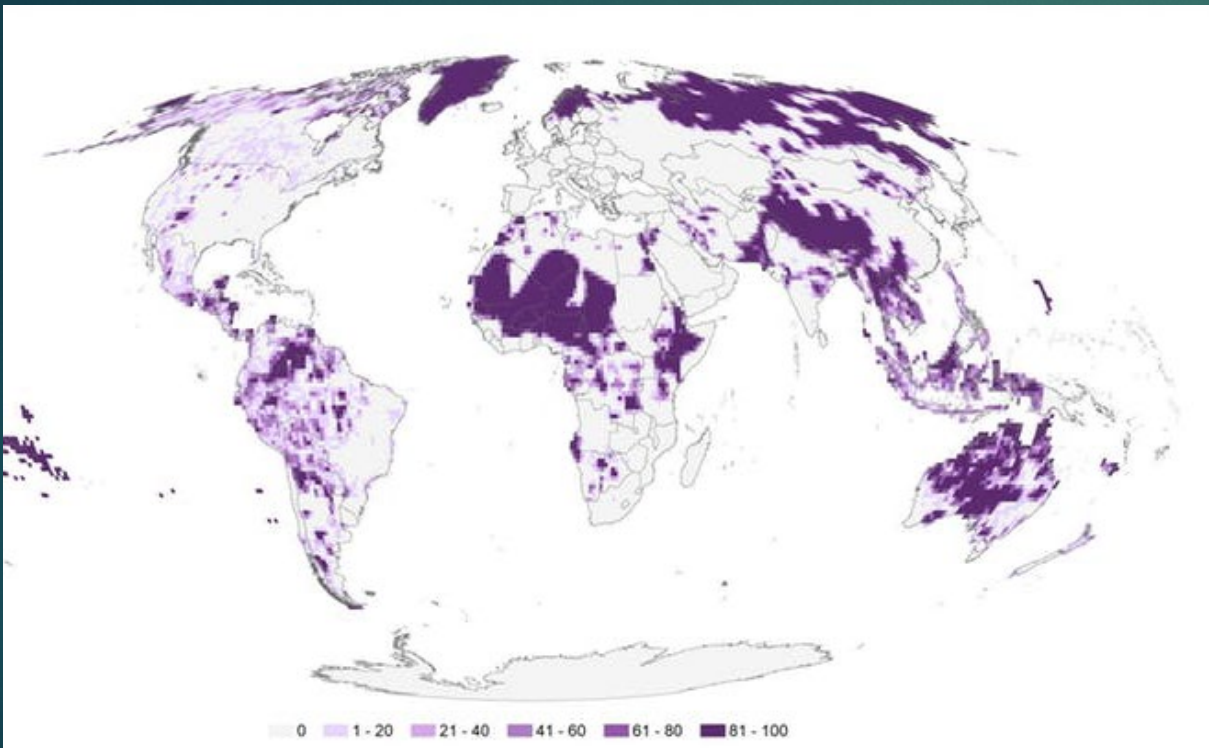
THIS CAN AND WILL NEED TO INCLUDE MULTIPLE GOALS AND
PURPOSES...INCLUDING SOME THAT CURRENTLY GOVERN OUR SYSTEMS

Current schooling is teaching “Apart from” models & structuring childhood to be an indoor endeavor



- ▶ Multi-generational decline in children's (all people) engagement with the outdoors.
- ▶ **Shapes approaches to content learning** (e.g. the US has invested in lab-based science infrastructure, not field based)
- ▶ Our "**representational ecosystem**" (educational artifacts) are dominated by "**apart from**" models
- ▶ Time outdoors shapes human microbiome and overall physical & emotional health as well as values and perspectives.
- ▶ Increasingly our intellectual health

Current Schooling is Driven by Nation-State Interests that Cultivate Indigenous Sacrificability Through Erasure/Absence....



- Indigenous territories contain 80% of the world's biodiversity
- 95% of climate change hotspots in Indigenous communities

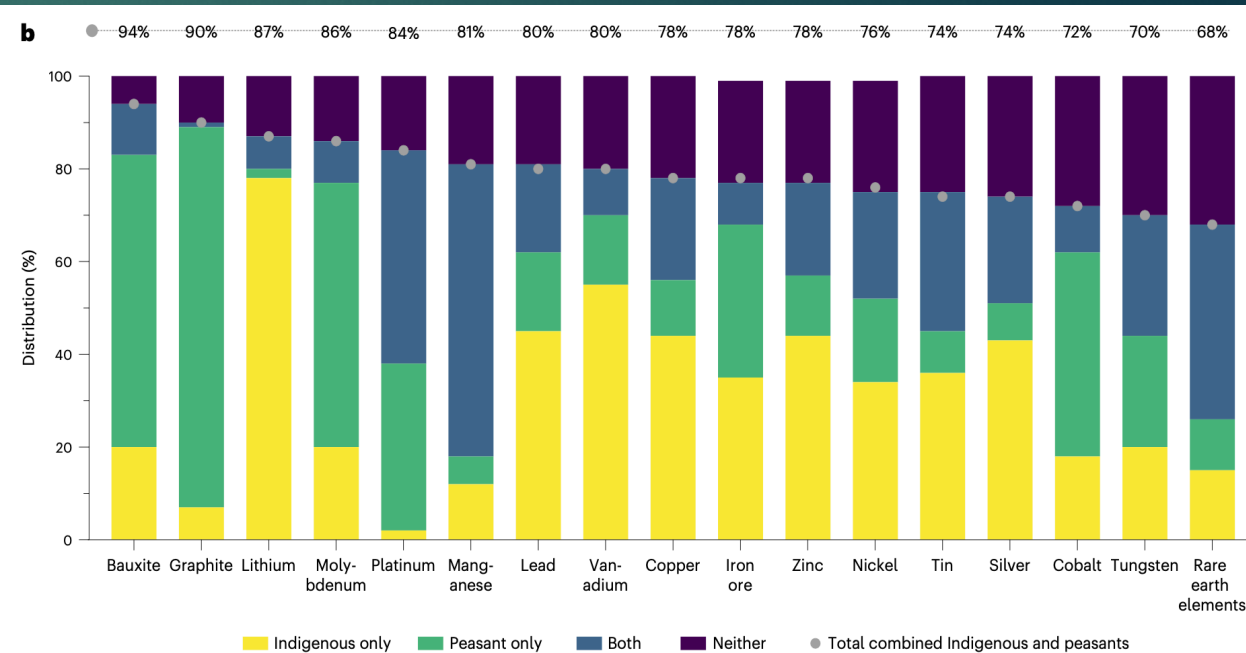


Fig. 1 | Distribution of ETMs by Indigenous peoples' and peasant land. a. Geographic distribution of mining projects, $n = 5,097$. **b.** Distribution of energy transition minerals and metals reserves and resources. The selected 17 minerals and metals have the highest number of extractive projects worldwide. Percentages at the top of the figure represent those for the 'total combined Indigenous and peasants' variable.

- 70-95% of ETMs are currently being mined on Indigenous & "peasant" lands – often the name for Indigenous peoples without political standing

Possibility for Education: A part of models for and with places, families, and communities that are cultivating ethical responsibility for collective planetary wellbeing.

Profound Shifts in Learning:

From “How do I know about?”

To “How can we live well with?”

