

A letter from the future

More humble but also more secure

a crucial source of knowledge...

...not the only source of knowledge

an important part of the solution...

...not the whole solution

We focus on what Science Education is FOR...

Science for

Civics

Aesthetics

Practical

Epistemology

Life SCAPE

City SCAPE

Land SCAPE

Star SCAPE

I really get to be **myself**

it's as much about **exploring ideas** as being right

we talk about **the things that matter** most to me

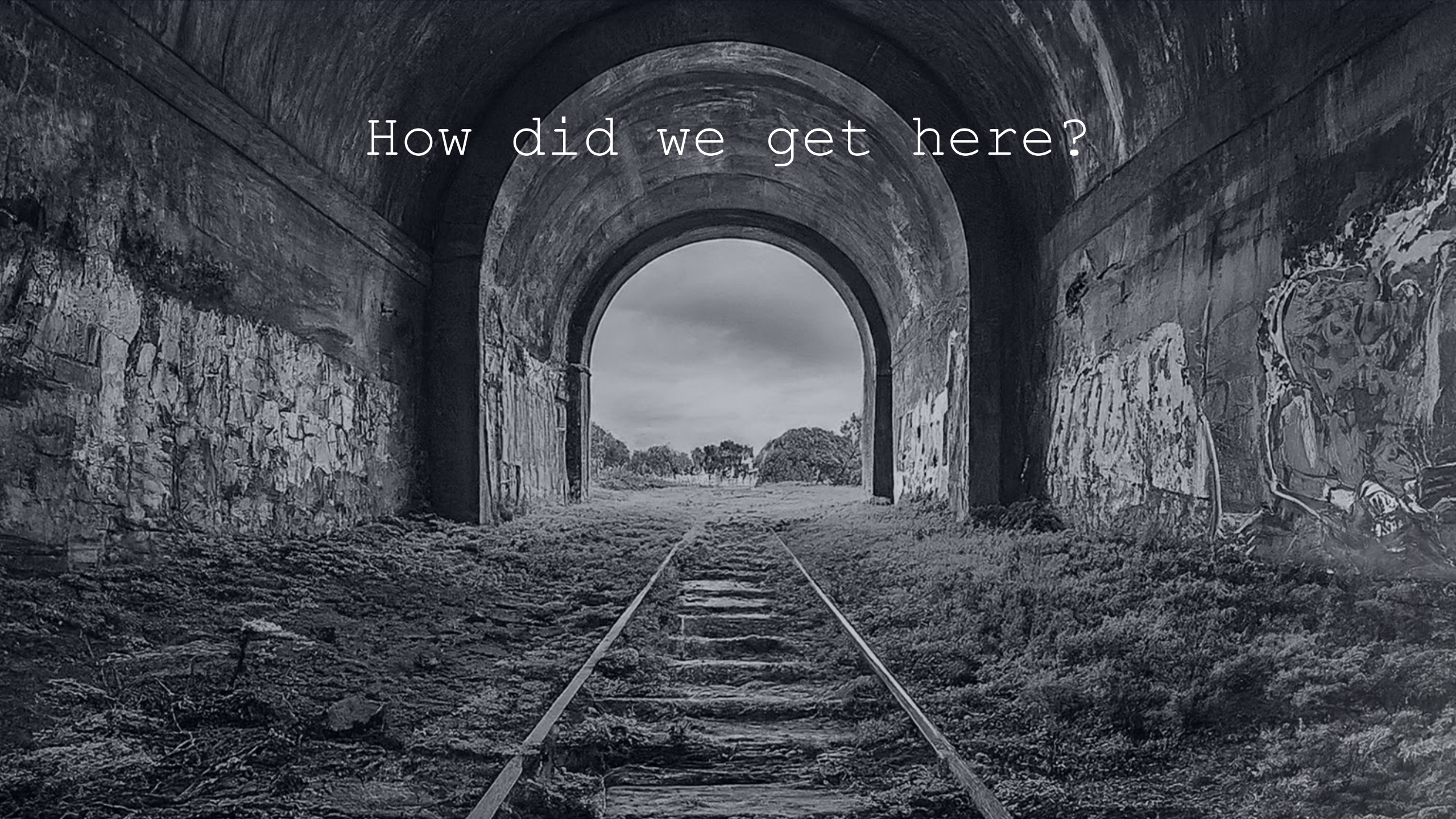
brings me into closer, richer **contact with the world**

my community is welcome...

...and **our needs** take center stage

we are always doing something that is **funny**
and **weird** and **beautiful!**

How did we get here?



Crisis transformed us

climate change lent us urgency and made us practical

the struggle for equitable democracy led us into the public sphere

the changing workforce robbed us of the pipeline argument

the re-thinking of higher ed shifted school's endpoint

youth despair led us to focus on beauty and meaning

We had to put down some old burdens

a deep-seated belief that science is **the ONLY real knowledge**

overheated (and under-evidenced) **workforce rhetoric**

mountains of “**heritage**” **disciplinary material**

our role as a **gatekeeper** for higher education

our belief that science could be “**above it all**”

What did BOSE do?

Kept us relentlessly focused on **what science ed is for**

Helped us ask **hard questions** about the things we take for granted
(STEM workforce, science literacy, “content”)

Exemplified a **deep commitment to learners** and educators

Showed us how to **reconnect our work to our world**

In the face of a changing world

...not just a good grade

not just a good job

but a good life.

See you in twenty years!

Noah Weeth Feinstein

University of Wisconsin-Madison

nfeinstein@wisc.edu