

Conceptualizing Convergence

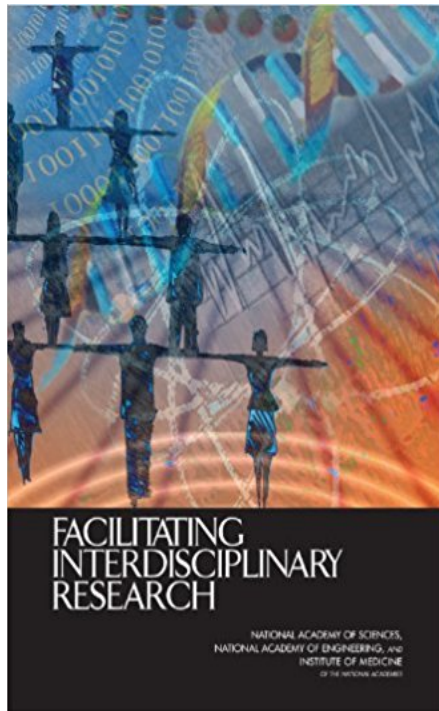
Dan Stokols

*Departments of Psychological Science and
Urban Planning and Public Policy
School of Social Ecology
Program in Public Health
College of Health Sciences
University of California, Irvine*

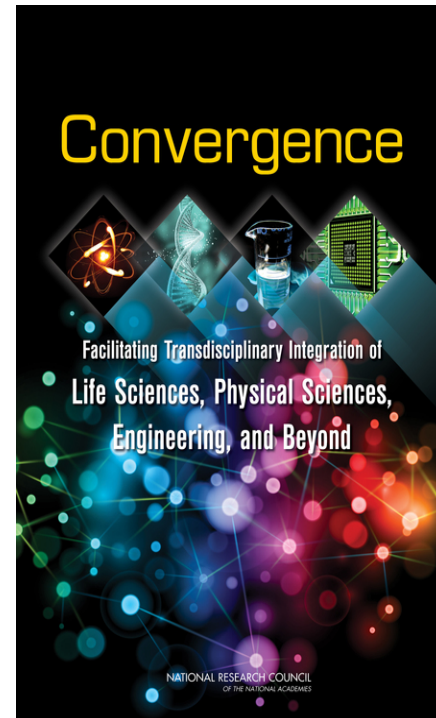
*Virtual Workshop on the Implications of Convergence for How the National Center for
Science and Engineering Statistics Measures the Science and Engineering Workforce
National Academies of Science, Engineering and Medicine
Washington, DC
October 23, 2020*

Convergence

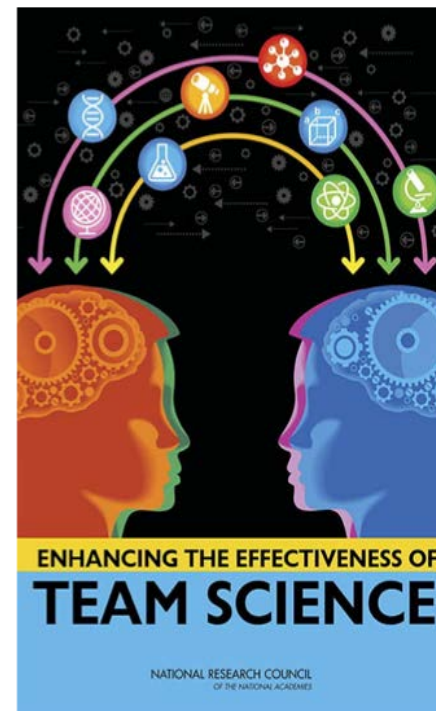
A National and Global Priority



(2005)



(2014)



(2015)



(2019)

Hallmarks of Convergent Research

- *Involves deep integration across disciplines and perspectives situated beyond academia*
- *Driven by a specific and compelling problem*
- *Often leads to co-production of knowledge by researchers and diverse stakeholder groups*

(cf., <https://www.nsf.gov/od/oia/convergence/index.jsp>)

Global Challenges of the 21st Century

- Environmental



- Public Health

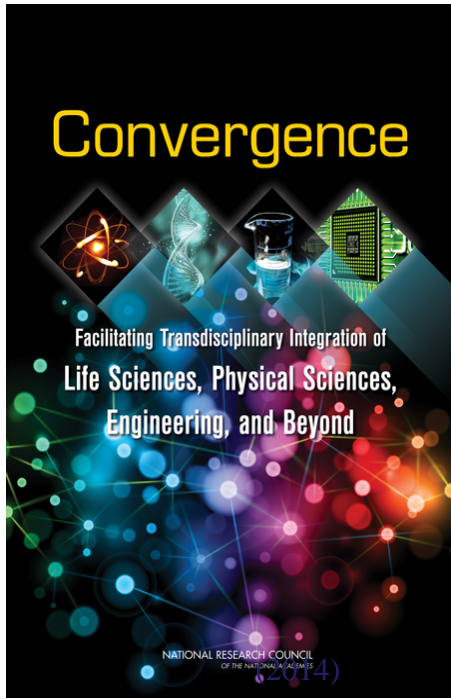


- Sociocultural



- Technological

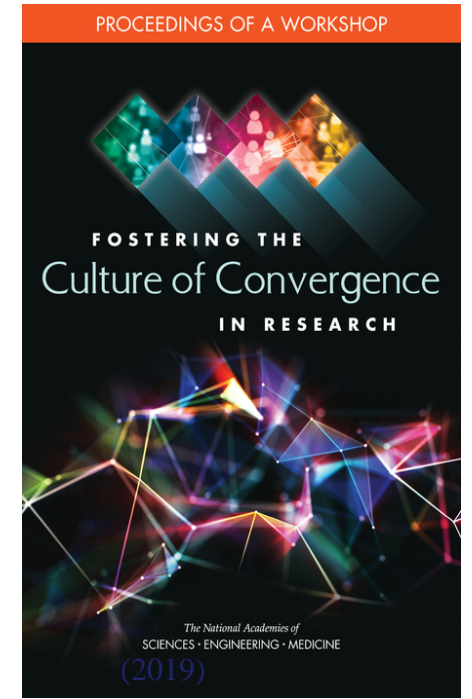




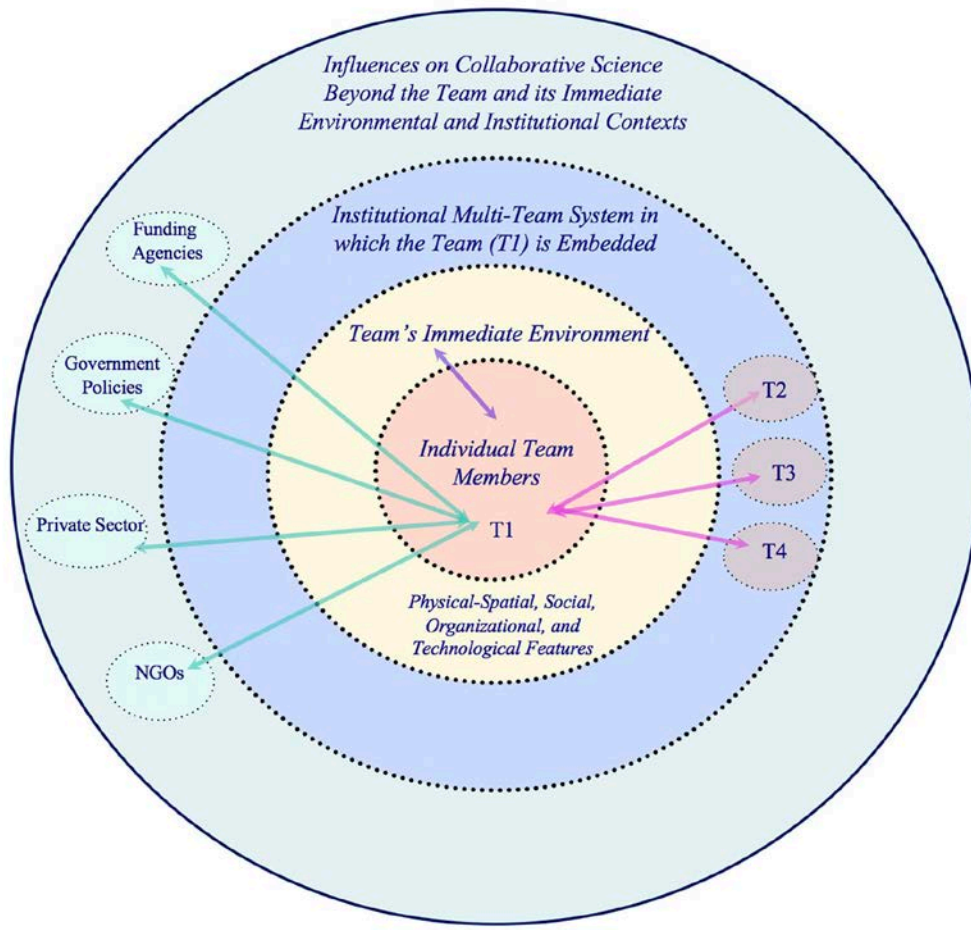
Changing Conceptions of Convergence



- *Broader cross-disciplinary and trans-epistemic scope, spanning academic fields and sectors beyond academia*
- *Greater emphasis on integrating the concerns and tools of transdisciplinary collaboration and convergence*
- *Explicit consideration of strategies for creating a culture of convergence in research organizations*
- *Closer look at the interplay between divergent and convergent thinking in research teams*
- *Emerging questions about the impact of macro-societal forces on convergence (proximity constraints imposed by Covid-19; cyber chaos; nationalistic, anti-science values and policies)*



Key Facets of the Convergence Ecosystem

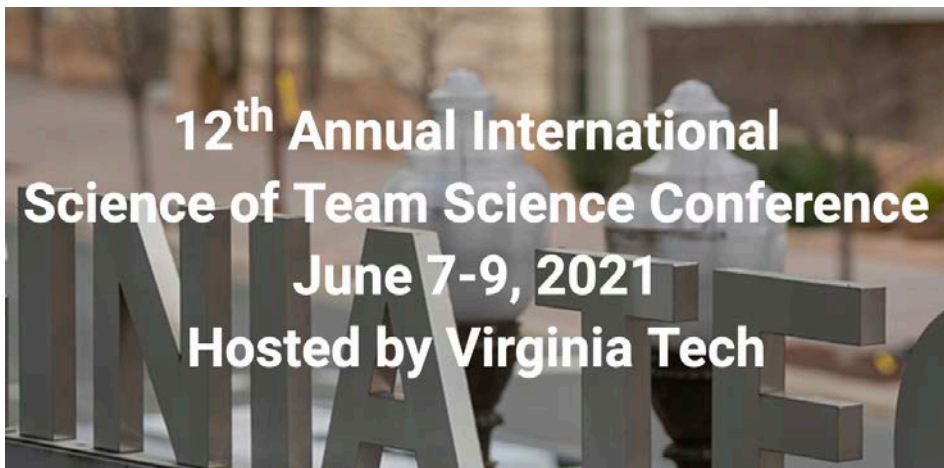


(Stokols, 2019; Stokols, Olson, Salazar, & Olson, 2019)

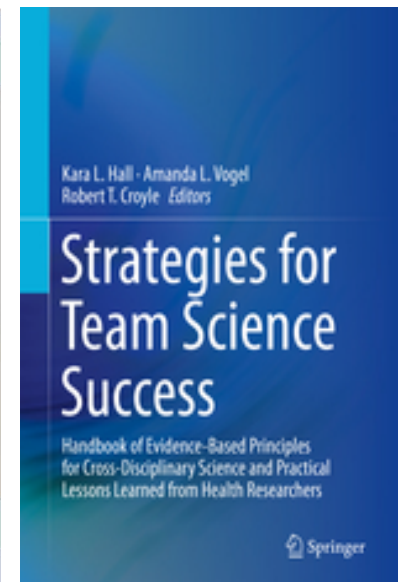
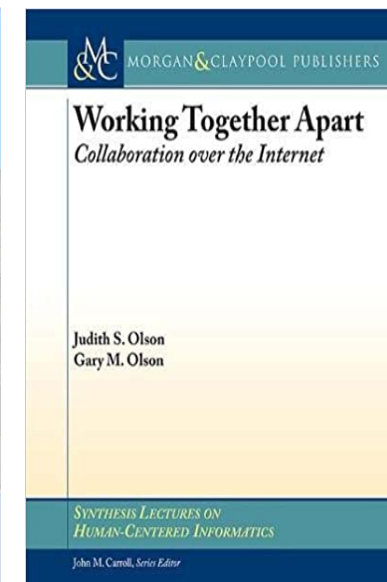
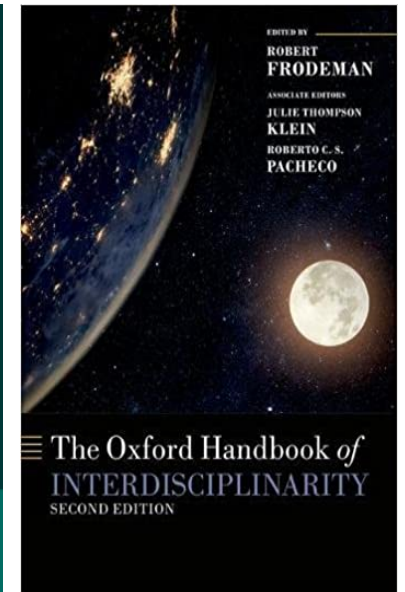
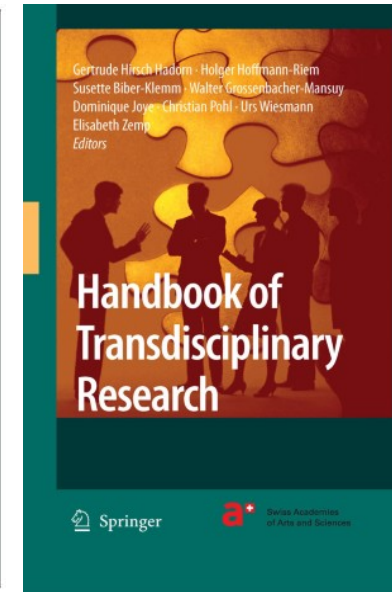
- *Societal events; national research policies; funding agency & foundation support for team science initiatives; pandemics, public opinion*
- *Institutional incentives for cross-disciplinary partnerships (e.g., seed grants, credit sharing, promotion and tenure criteria)*
- *Team-level supports (team assembly, collaboration planning; funding, technological and environmental resources)*
- *Cultivating collaborative and integrative competencies- individual and team training strategies*

The Science of Team Science

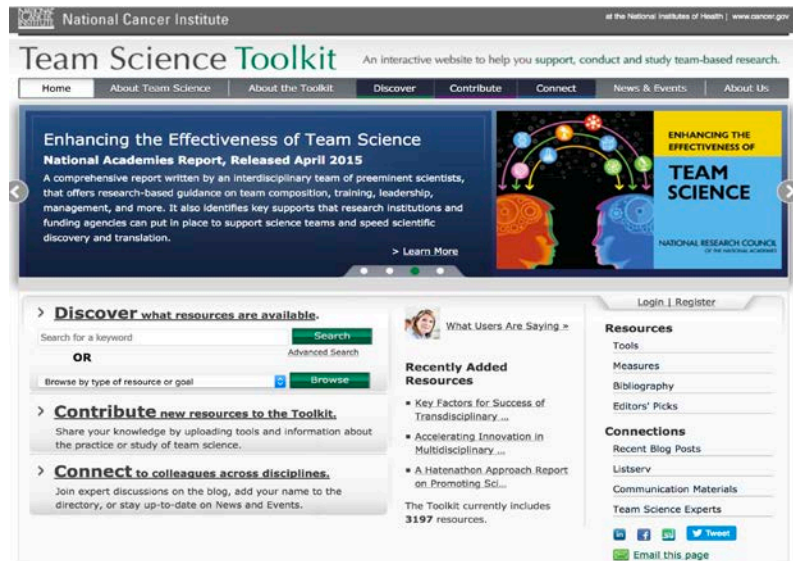
...an interdisciplinary field concerned with understanding and managing circumstances that facilitate or hinder the effectiveness of collaborative (and often cross-disciplinary) research, training, and translational initiatives



<https://www.inscits.org/>



Resources for Convergence Training and Practice

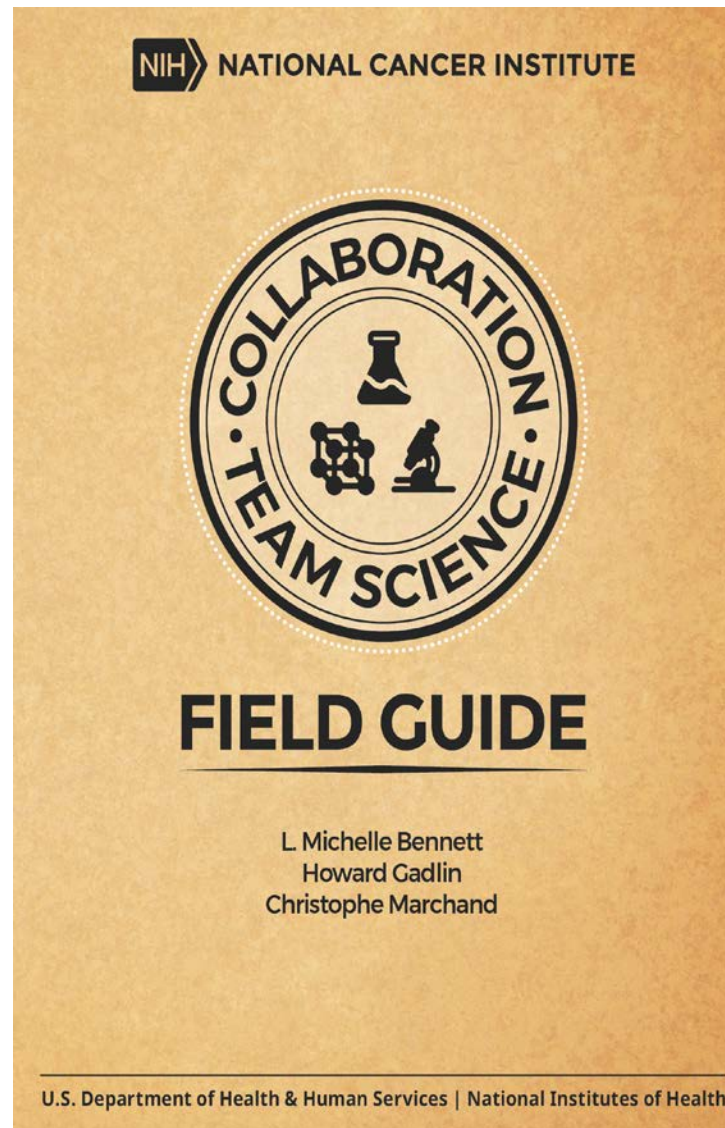


<https://www.teamsciencetoolkit.cancer.gov>



It has been *evident for some time* that many challenges in scholarship require assembling teams, either large or small, to take them on. This is because the mix of skills required are seldom held by just one person or the effort involved needs to be distributed in order to reach an outcome in reasonable time. But effective team scholarship can be a challenge to create. This site offers a guide to making such efforts more successful.

<https://tsal.uci.edu/>



<https://www.cancer.gov/about-nci/organization/crs/research-initiatives/team-science-field-guide>

<http://www.scienceofteamscience.org/scits-a-team-science-resources>



<http://tdi.msu.edu/>

<http://tdi.msu.edu/workshops/>



td-net – Network for Transdisciplinarity Research

Methods and tools for co-producing knowledge

Collaboration between experts and stakeholders from science and practice for tackling real-world, context-sensitive societal challenges. [more](#)

Image: td-net

Search by key issues Search by phases Shared experiences

[> Homepage](#) [> Methods](#) [> td-net toolbox](#)

td-net toolbox

https://naturalsciences.ch/co-producing-knowledge-explained/methods/td-net_toolbox

Convergence in the Covid Era

- Fostering Intellectual Synergy
- Promoting Social Integration

Pre-Covid, spatial proximity and environmental supports were considered essential for sustaining intellectual and interpersonal integration in research teams. How will reduced colocation of team members in the Covid era affect the convergent capacity of research teams and centers? What new competencies for convergence research will become imperative in the Covid era?



(<https://i2insights.org/2019/03/12/idea-tree-brainstorming-tool>)

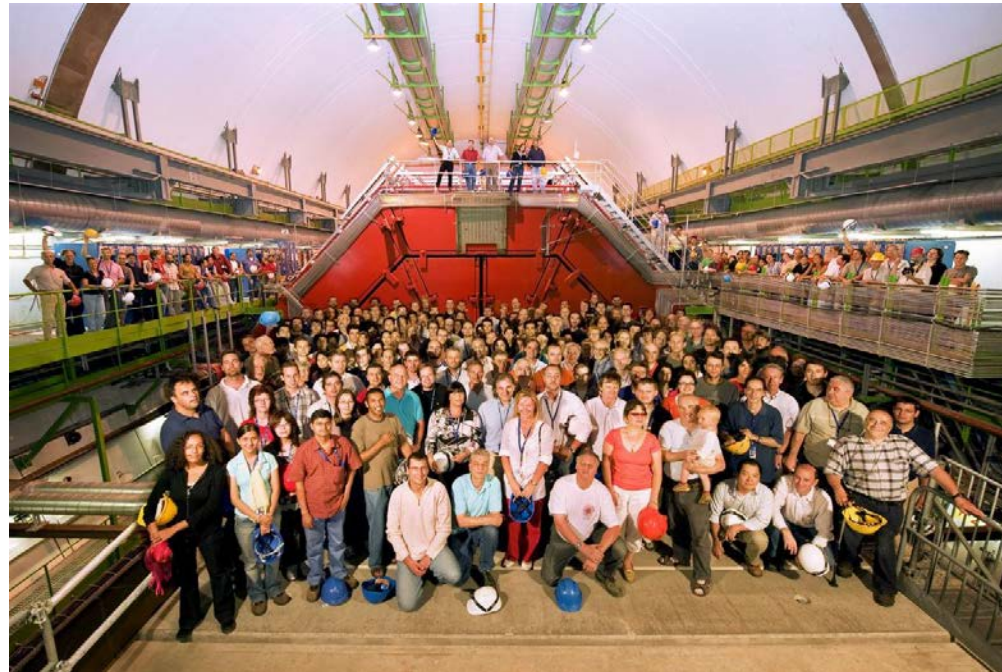


(Kabo, Hwang, Levenstein, & Owen-Smith, 2013; Stokols, 2011)

Cultivating Core Competencies for Convergence

The Four T's of Research Training in the 21st Century

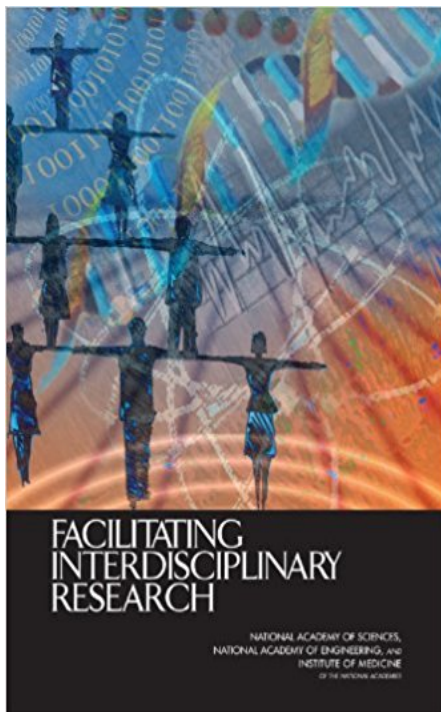
- *Transdisciplinary*
- *Team-based*
- *Translational*
- *Transcultural*



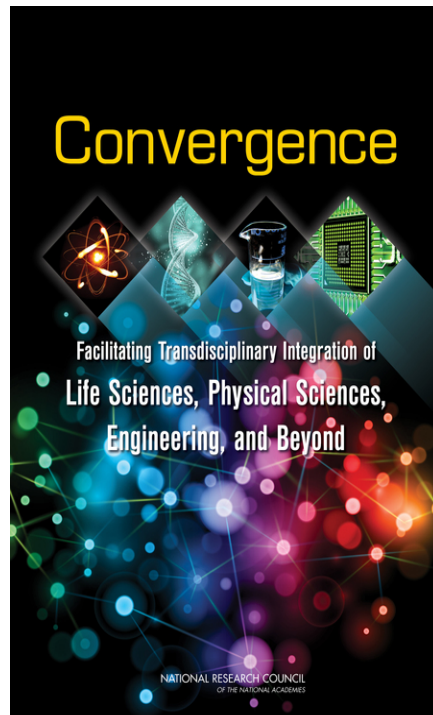
Members of the ALICE Collaboration, A Large Ion Collider Experiment

Convergence

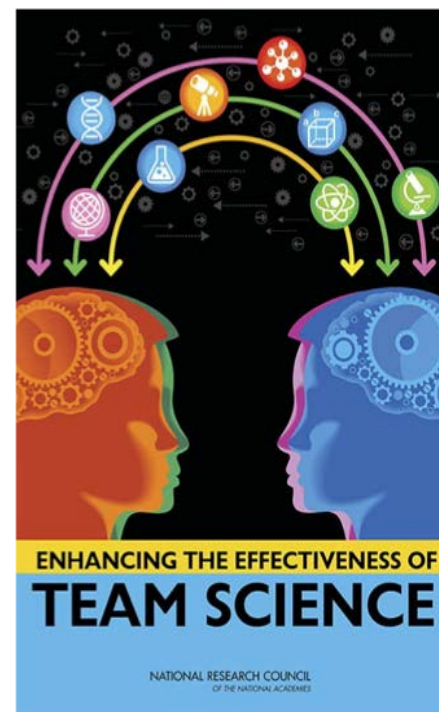
Questions for the Future



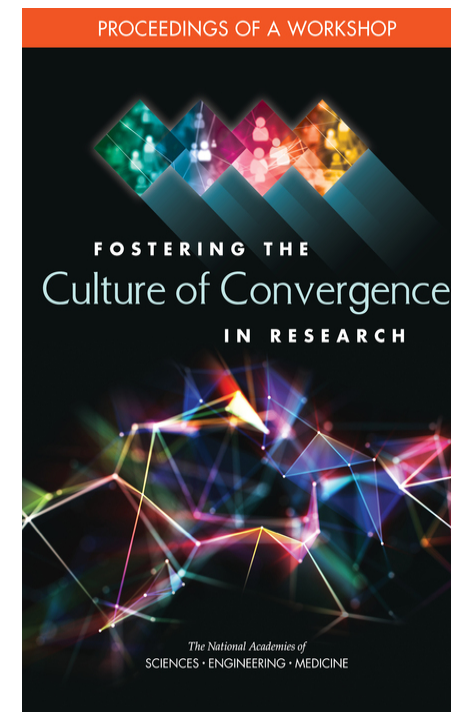
(2005)



(2014)



(2015)



(2019)

- *Standardized or context-dependent definitions & criteria of convergence?*
- *Key competencies for co-producing knowledge spanning multiple fields & societal sectors?*
- *Can we transcend spatial, sociocultural, & geo-political constraints on convergence?*

(20XX)