

# Perspectives on Data Needs

Scott Ramsey, MD, PhD  
Director  
Hutchinson Institute for Cancer Outcomes  
Research

# Mission

---



**FRED HUTCH**  
Hutchinson Institute for  
Cancer Outcomes Research



**FRED HUTCH**  
CURES START HERE

Eliminate cancer and related diseases as causes of human suffering and death.



Hutchinson Institute for Cancer Outcomes Research

Improve the effectiveness of cancer prevention, early detection and treatment services in ways that reduce the economic and human burden of cancer.



# Community Engagement Program



# Data Source: HICOR Data Repository



**FRED HUTCH**  
Hutchinson Institute for  
Cancer Outcomes Research

## Health Care Claims

Payer	Years
Premiera Blue Cross	Jan 2011-Jun 2020
Regence BlueShield	Jan 2011-Jun 2020
Uniform Medical Plan	Jan 2011-Jun 2020
Medicaid	Jan 2011-Jun 2020
Medicare	Jan 2011-Dec 2019

## Cancer Registries

Registry	Years
CSS-Puget Sound SEER	Jan 2011-Aug 2020
Washington State Cancer Registry	Jan 2011-Dec 2017

**Clinical, Utilization, Cost and Survival Data  
of ~70% of cancer patients in Washington state**

Over 119,932 patients at Diagnosis  
Over 53,274 at time of Death



FRED HUTCH

# Community Cancer Care Report

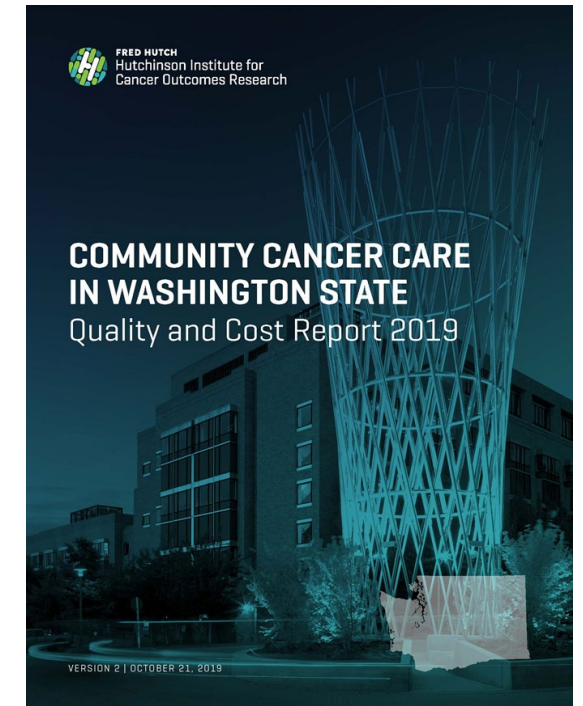


**FRED HUTCH**  
Hutchinson Institute for  
Cancer Outcomes Research

First in the nation to publicly report clinic-level quality measures linked to cost in oncology

Fred Hutch and Washington state are showing national leadership in data transparency in cancer care.

Unprecedented collaboration between health care stakeholders: payers, providers, patients, researchers



# How Can Databases Best Serve Patients?



FRED HUTCH  
Hutchinson Institute for  
Cancer Outcomes Research

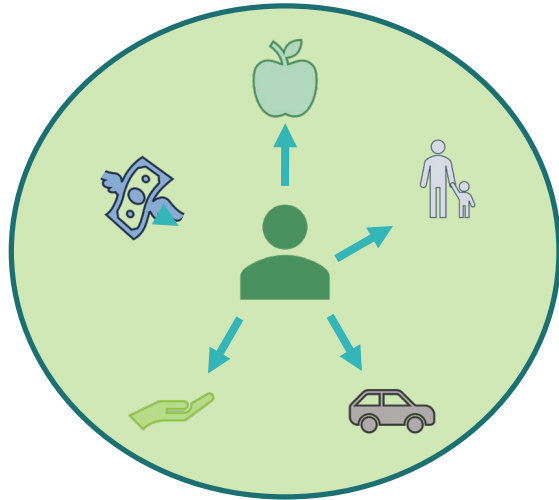
- Comprehensive capture of the patient experience
- Elements informed by patients and other stakeholders
- Relevant to decisions
- Ongoing mechanism for direct feedback on patient-identified priorities
- Information is relevant and accessible
- Timely

# Are Patients Well-Served By Our Data Infrastructure?



FRED HUTCH  
Hutchinson Institute for  
Cancer Outcomes Research

Social determinants  
Medical conditions



Neighborhood  
and network  
effects



Understanding  
the Health  
System



Care  
plan and  
rationale



Ability to  
interrogate  
information



# What factors influence patients' sense of well-being during cancer care?

---



FRED HUTCH  
Hutchinson Institute for  
Cancer Outcomes Research

- Feeling that they are supported
- Dealing with uncertainty
- Perceived loss of autonomy
- Trust in the health system



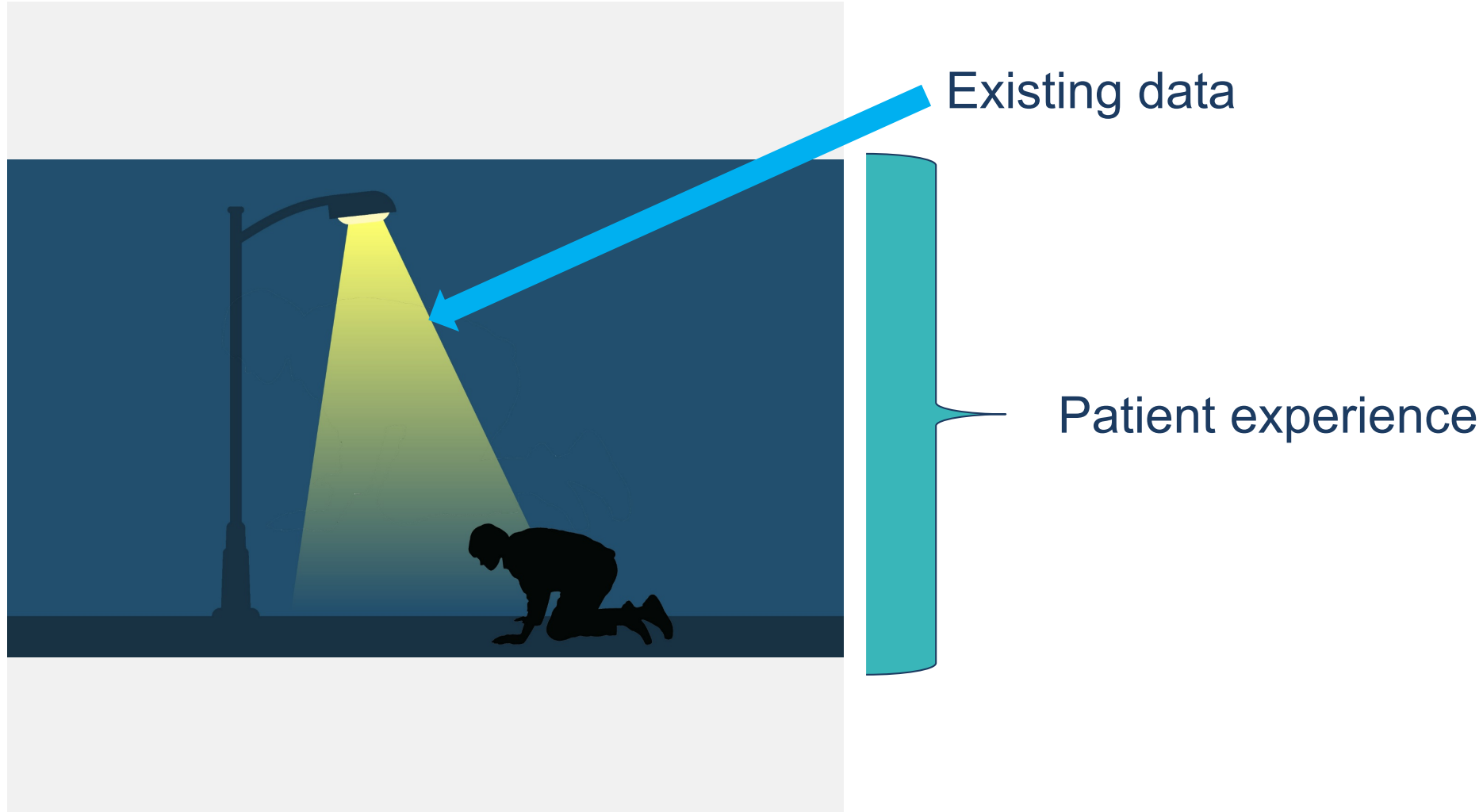
FRED HUTCH



# What questions cannot be answered with the current PCOR data infrastructure?



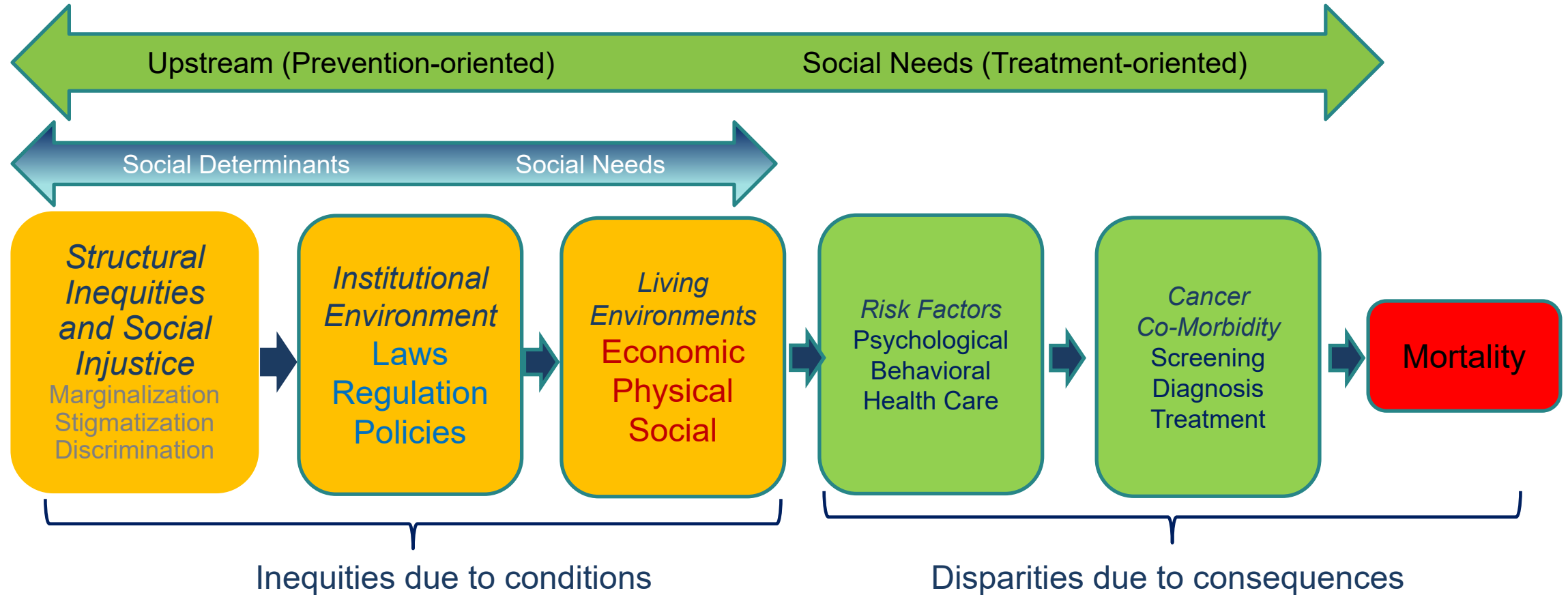
FRED HUTCH  
Hutchinson Institute for  
Cancer Outcomes Research



# Role of social determinants of health



FRED HUTCH  
Hutchinson Institute for  
Cancer Outcomes Research



Adapted from: CA: A Cancer Journal for Clinicians, Volume: 70, Issue: 1, Pages: 31-46, First published: 29 October 2019, DOI: (10.3322/caac.21586)

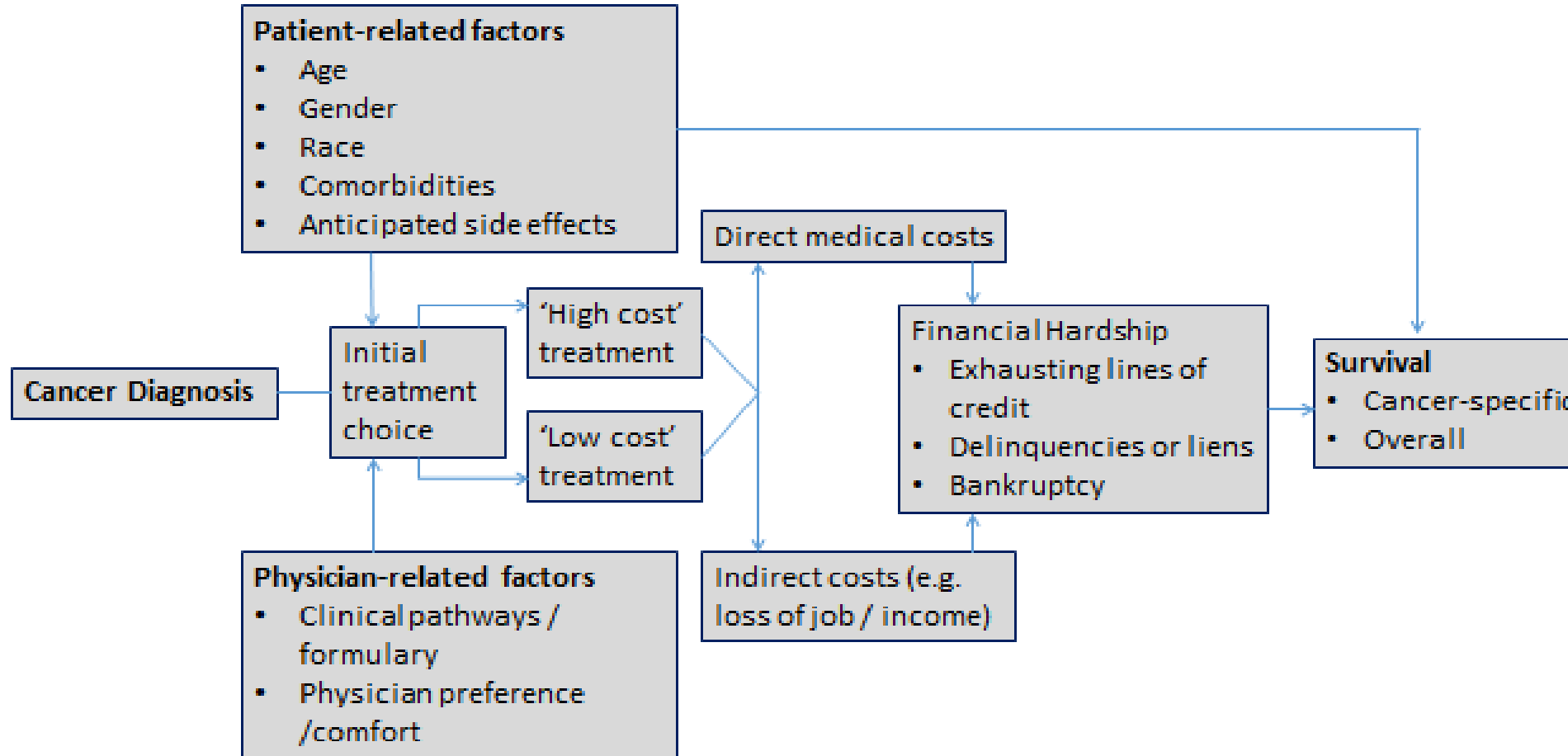


FRED HUTCH

# Severe illness and adverse financial outcomes



FRED HUTCH  
Hutchinson Institute for  
Cancer Outcomes Research



# What data capacity challenges is HHS best positioned to address?



FRED HUTCH  
Hutchinson Institute for  
Cancer Outcomes Research

- HHS doesn't need to create new data, it needs to facilitate access to existing data that currently lives in the private sector
- Create regulations that foster interoperability
- Establish privacy safeguards
- Improve timeliness of databases



FRED HUTCH



THANK YOU



**FRED HUTCH**  
CURES START HERE®

*[fredhutch.org](https://fredhutch.org)*