

Private-Sector Health Data: Overview of Data Infrastructure, Initiatives, & Lessons Learned

National Center for Health Statistics (NCHS)

Brian C. Moyer, Director

December 16, 2021

Using Private-Sector Health Data

- **Key Attributes of a Data Infrastructure**

- Capacity
- Consistency
- Sustainability

- **NCHS Initiatives**

- Electronic Health Records
- Data Linkage/Social Determinants of Health
- Vital Statistics

Electronic Health Records (EHRs)

- **Opportunities**

- Single repository for multiple uses
- Reduced burden on healthcare providers
- Higher-quality and more timely statistics

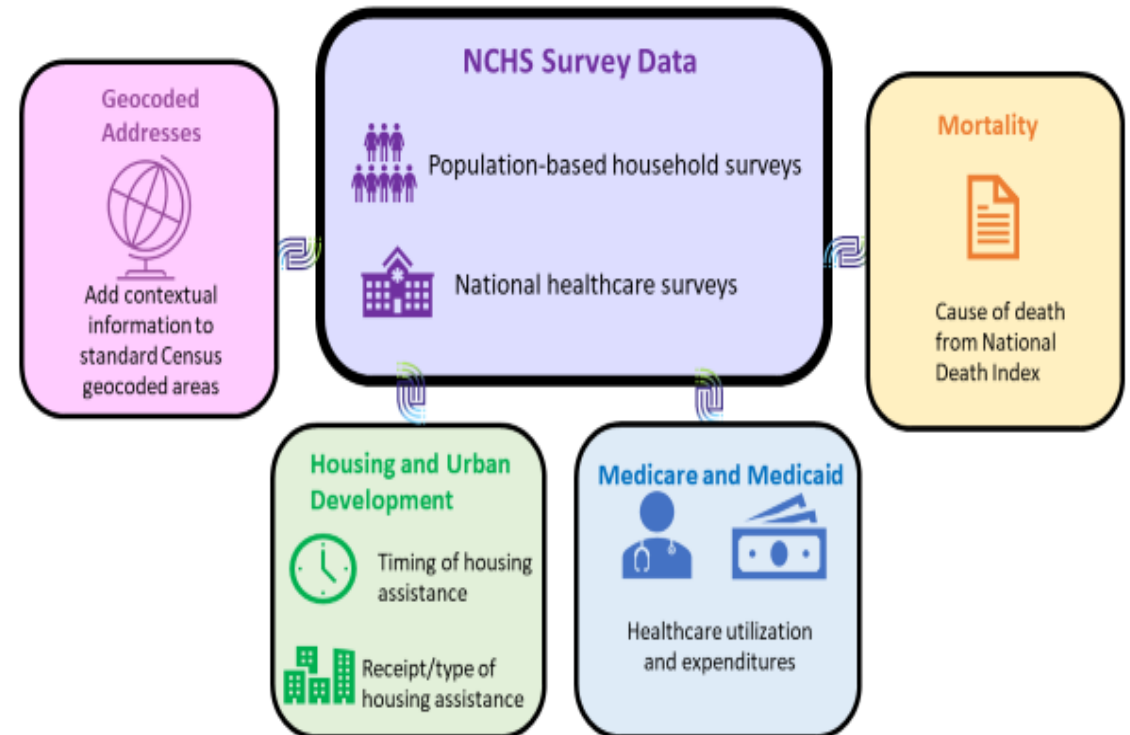
- **Challenges**

- Significant storage and processing costs
- Lack of common/consistent data standards
- Privacy concerns
- Acquisition hurdles



NCHS Data Linkage Program

- Linked data provide policy-relevant information in an efficient way
- NCHS links many of its surveys to administrative & private data sources
- Geocodes are often included



Social Determinants of Health (SDOH)

- **Expanded data sources and linkage to examine SDOH**
 - Conduct new and updated linkages, including private data
 - Improve privacy protections for linked data—e.g., Privacy Preserving Record Linkage
- **Integrated SDOH data for cross-government evidence-building efforts**

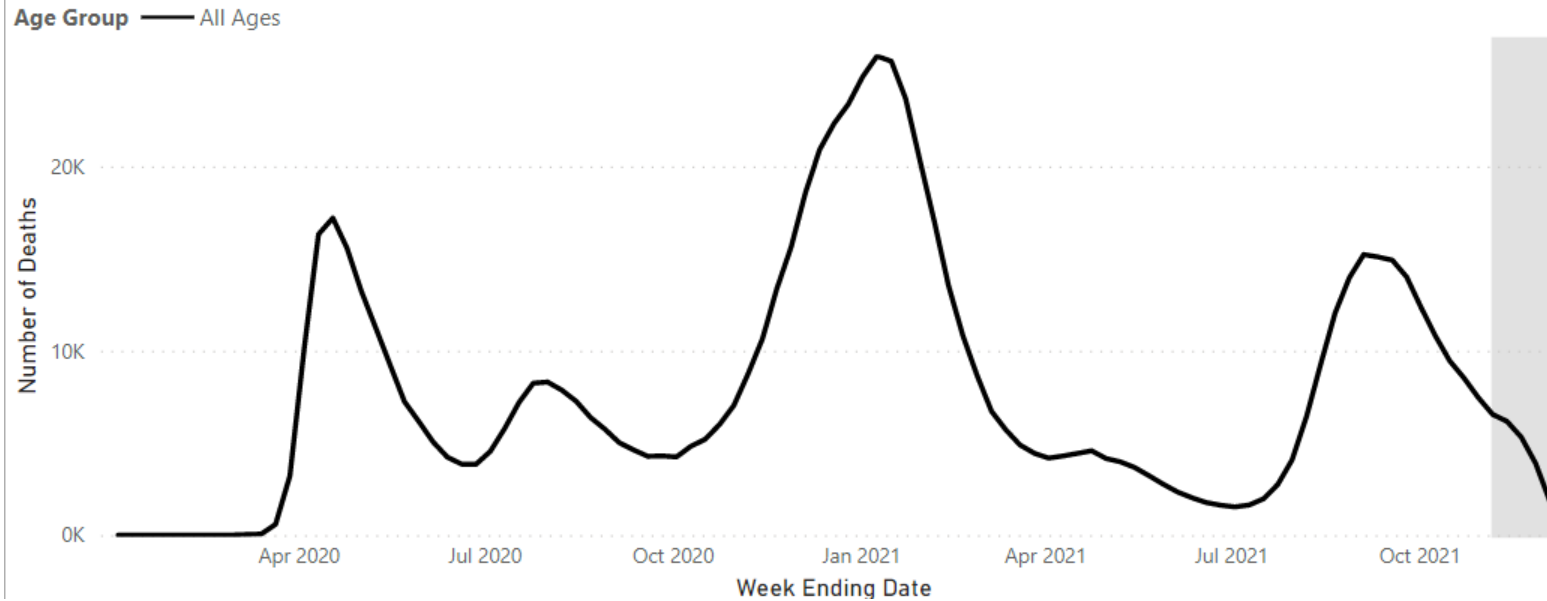
Social Determinants of Health



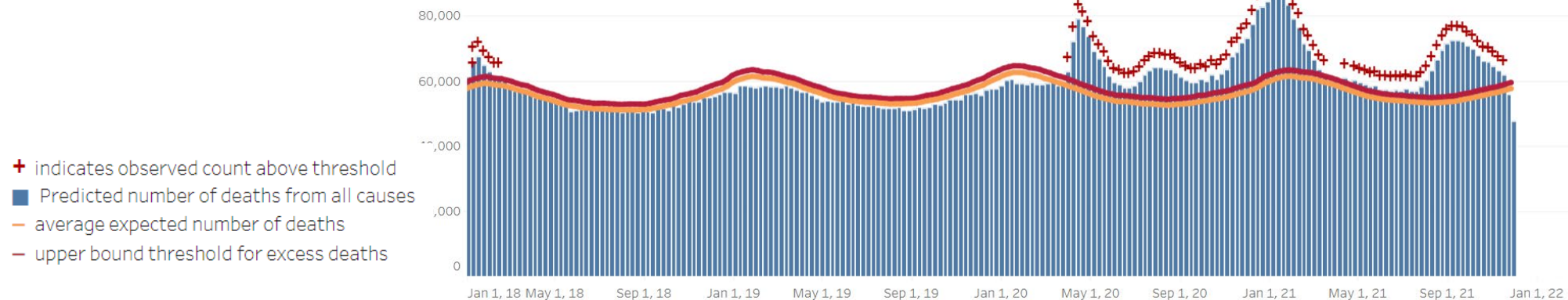
Vital Statistics

Provisional Death Counts for COVID-19

Provisional Death Counts, by Week Ending Date and Age Group



Excess Deaths – Weekly number of deaths (from all causes)



Vital Statistics: Mortality Data Flows

Medical

Demographic

Physicians



EHR



Death Scene



Autopsy

Medical
Examiners
& Coroners



Toxicology



ME/C Case
Management
Systems

Funeral
Home
Directors



Demographic
Data



State
Registrars



Death
Registration
Systems

EDRS

Director of
Division of
Vital
Statistics



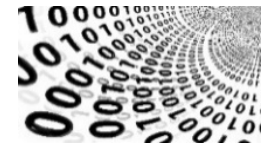
National Vital
Statistics
System



National
Analyses
and
Reports



National Death Index



Surveillance,
Public Use, and
Restricted Data



State
Surveillance,
Public Use, and
Restricted Data