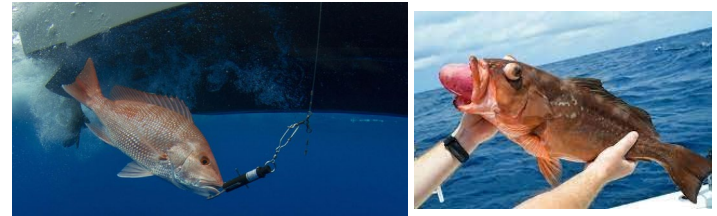


SEFSC User group perspective

National Academy of Sciences Engineering and Medicine Peer review of Marine Recreational Information Program's Survey and Data Standards

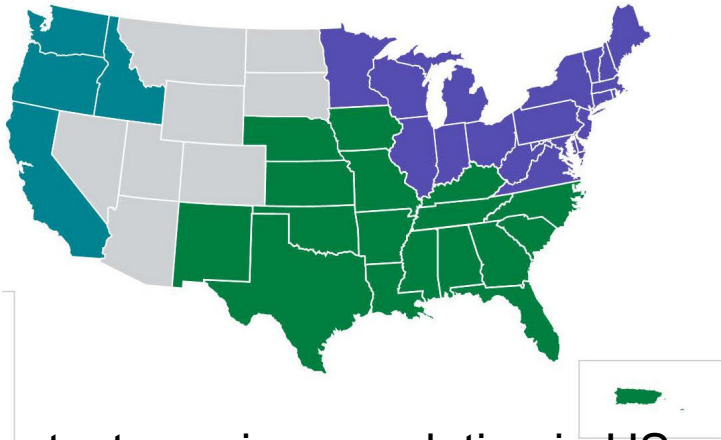
**John Walter
Deputy Director for Science and Council
Services
Southeast Fisheries Science Center
May 22, 2025**



Southeast Fisheries Science Center/Southeast Regional Office



3 Councils + ICCAT +
2 Interstate Fisheries Commissions



Fastest growing population in US



3rd Largest Reef Tract in World



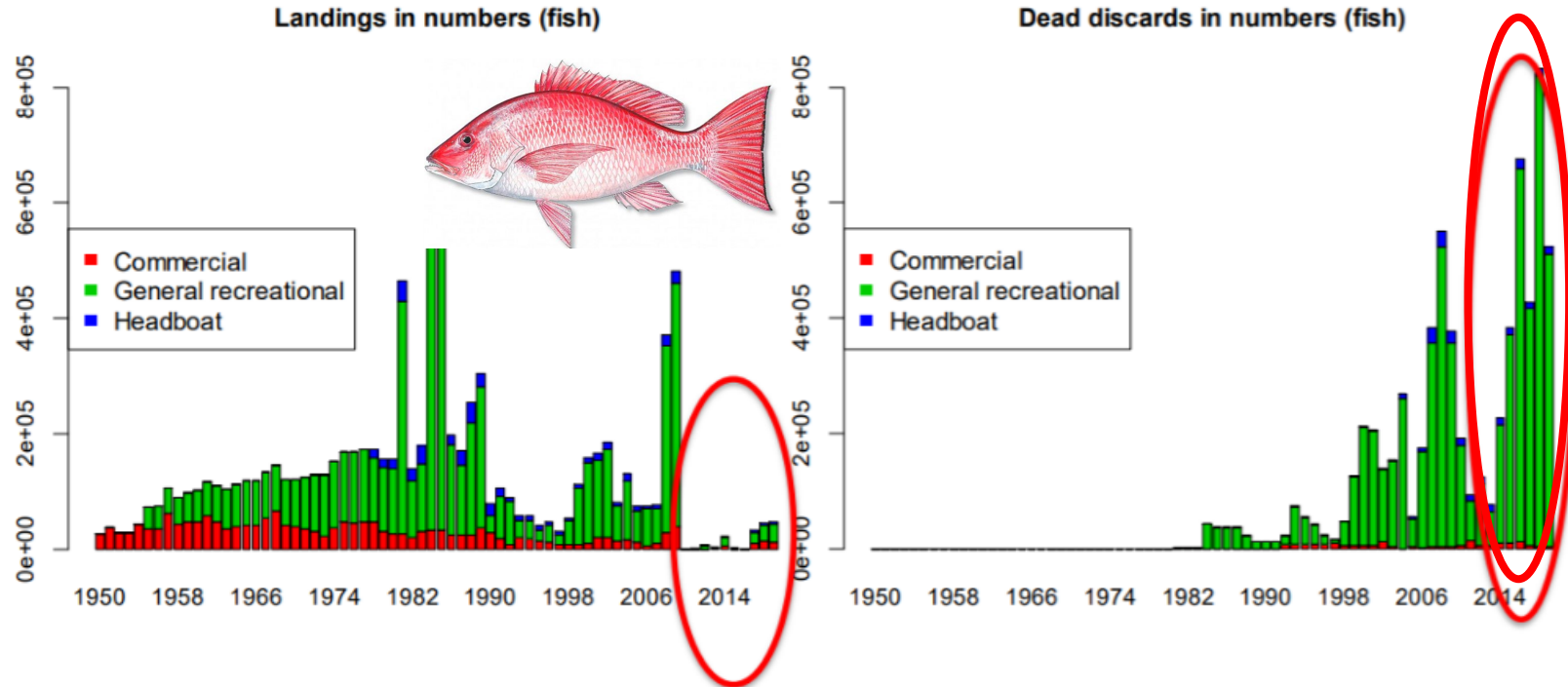
More recreational anglers and trips than rest of
US combined

Four primary Southeast MRIP uses

1. Recreational catch, catch per unit effort and discards and length information
2. Sector allocations, e.g. Commercial vs Recreational allocations
3. Common currency conversions between state surveys: Alabama, Texas, Florida, Mississippi, Louisiana and soon other states
4. Annual/Subannual Catch limit monitoring and management scoping

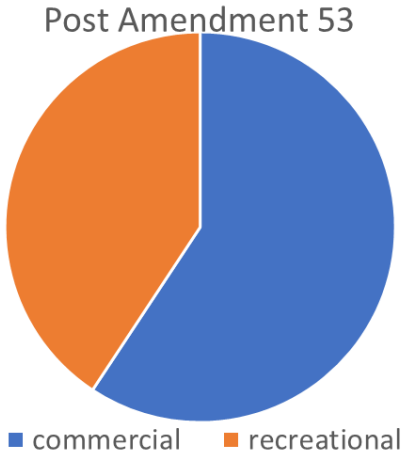
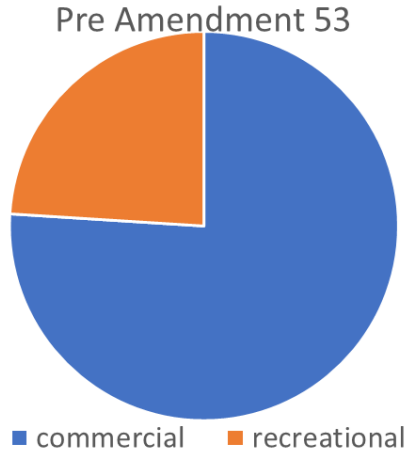
1. Recreational catch and discards

South Atlantic Red Snapper



Greatest source of fishing mortality and greatest uncertainty

2. Sector allocations



Amendment 53: Revise the Gulf of Mexico red grouper allocation from 76% commercial and 24% recreational, to 59.3% commercial and 40.7% recreational

Highly contentious

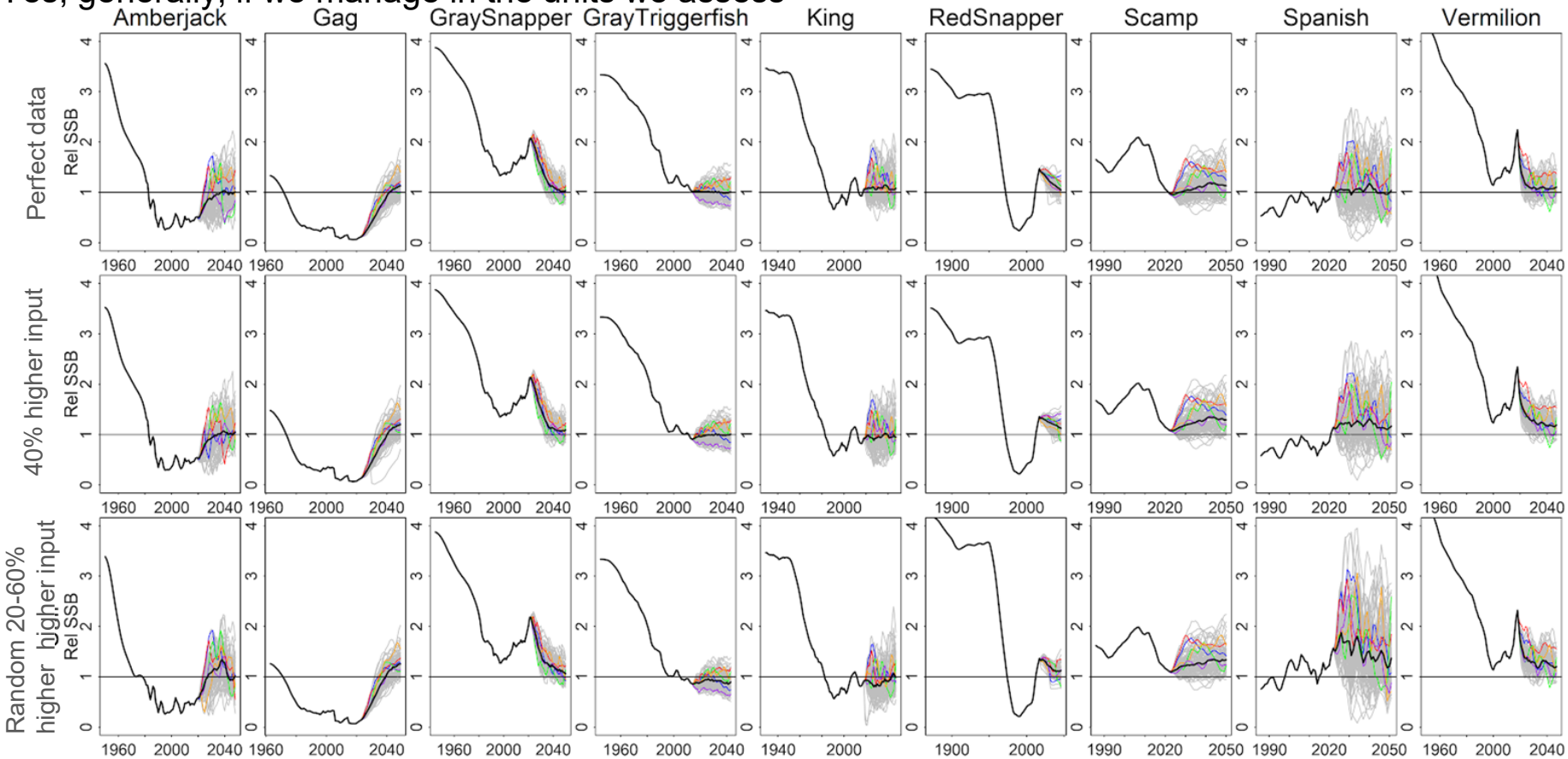


Allocations are considered after completed stock assessment according to council allocation guidelines

No error considered in the allocation setting

Even if scale varies with survey changes, can we still use MRIP for effective management?

Yes, generally, if we manage in the units we assess



Peterson, C. et al. in prep. A management strategy evaluation of the implications of varying scale of recreational data input on management performance.

Discussion topics

1. Differentiate Fishing Effort Survey (FES) from Access Point Angler Intercept Survey (APAIS)
2. Strengths and limitations of standards and methods relative to data uses
3. Larger context under which MRIP-FES surveys operate- widespread public distrust, movement to state-surveys and desire for certifications