

Novel Approaches to Administrative and Crowd-Sourced Data

Applications, concerns, and new directions for quantifying contemporary state violence

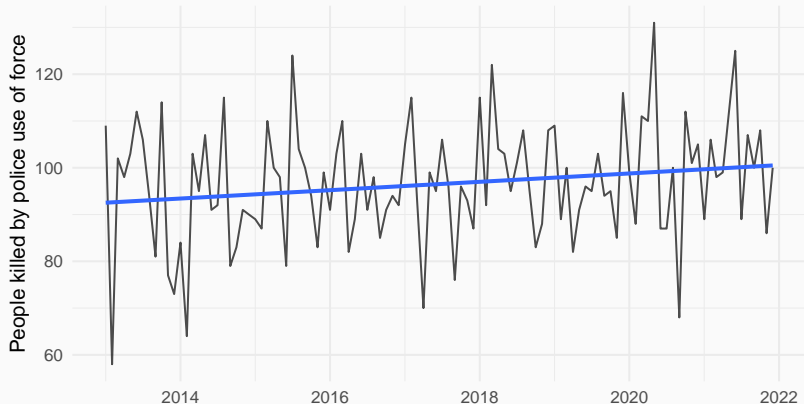
Frank Edwards

May 17, 2022

School of Criminal Justice, Rutgers University - Newark

New data = new opportunities for
measuring state violence

People killed by police in the US, 2013 - 2021 by month

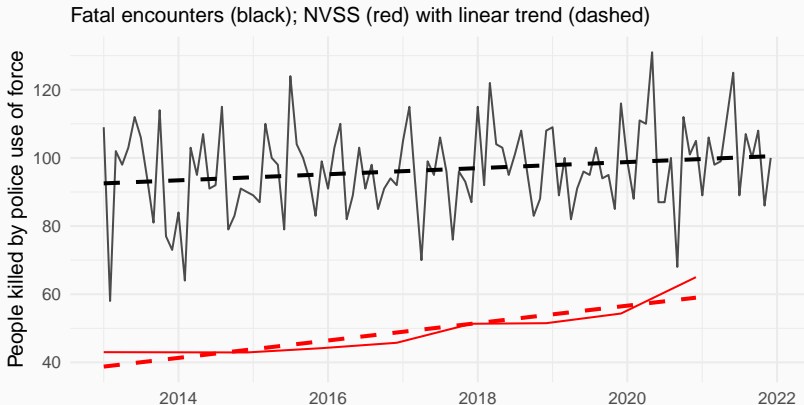


Average daily killings: 3.2
Average monthly killings: 96.5
Average yearly killings: 1157.7

data from fatalecounters.org

New data can reveal limits of official statistics

People killed by police in the US, 2013 - 2021 by month



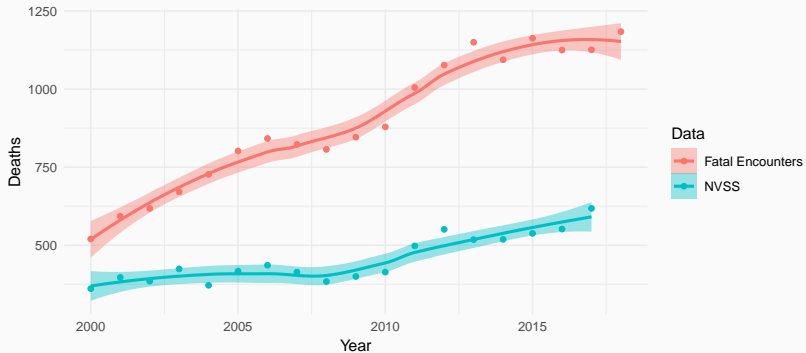
Average daily killings – FE: 3.2 ; NVSS: 1.6
Average monthly killings – FE: 96.5 ; NVSS: 49.8
Average yearly killings – FE: 1157.7 ; NVSS: 597

data from fatalencounters.org and CDC

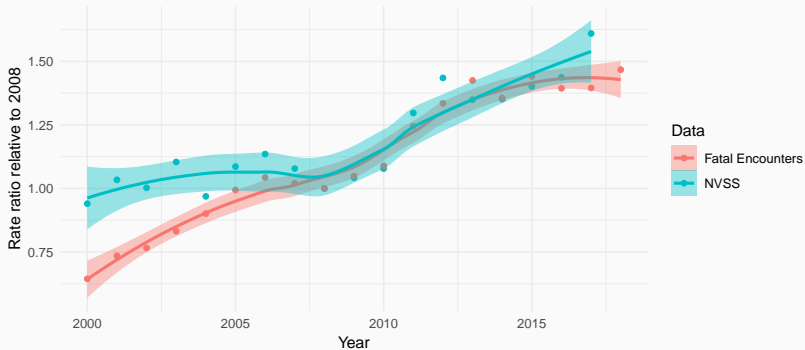
Unofficial data are not a panacea:
the importance of data generating
processes

Searchable local news as data: potential temporal biases

Deaths recorded in FE and NVSS 2000 - 2017

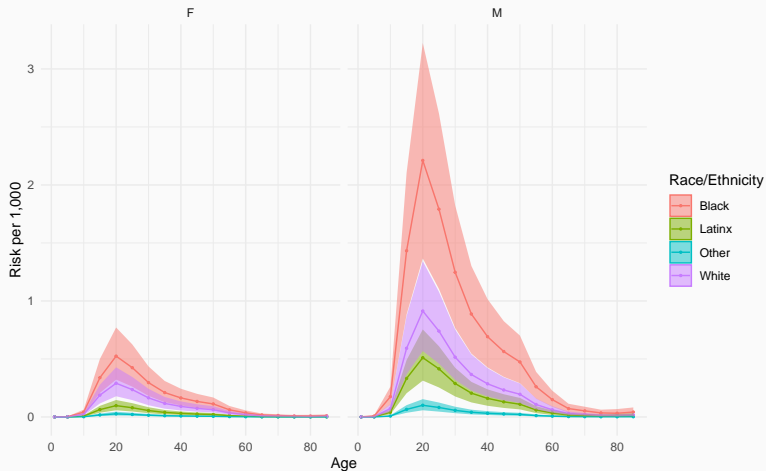


Change in deaths reported in FE and NVSS, 2008 as reference



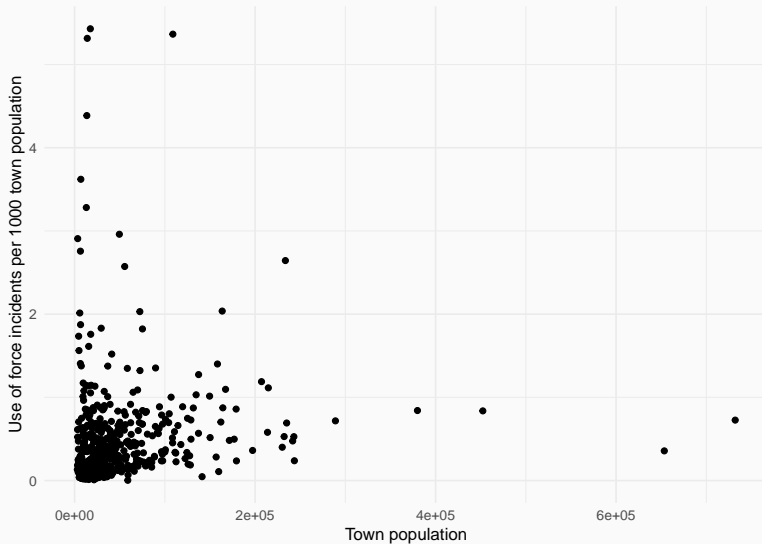
Administrative court records as data: missing data and potential spatial bias

Age-specific risk of police use-of-force in New Jersey



data from force.nj.com

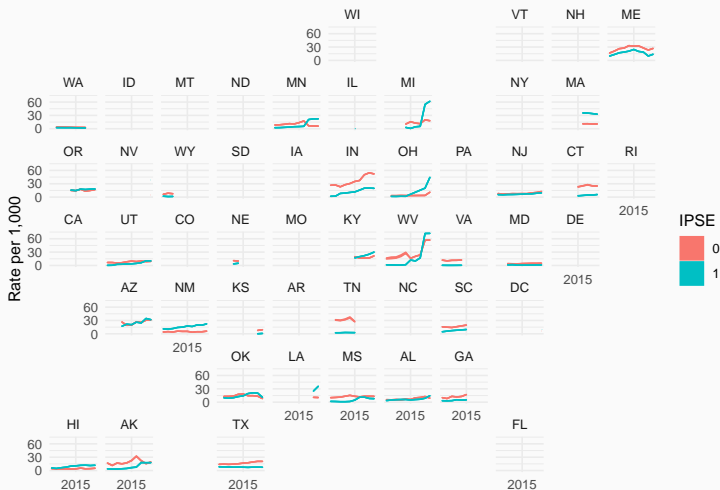
Use of force reports across NJ towns



data from force.nj.com

Child protection investigation reports as data: non-reporting and spatial bias

Administrative data on pre-natal substance exposure screening 2010 - 2019



data from National Child Abuse and Neglect Data System (NCANDS)

Looking forward

Two fundamental problems in official data collection

- Federalism
- Politics

Potential for unofficial data on state violence

- News as data is powerful, but limited
- Funders and Universities need to commit to long-term data collection

Moving forward with administrative data on state violence

- Agency admin data high quality, but limited scope
- Agency involvement in research approval limits scope of critical work
- Geographic biases in availability

Thanks

Co-authors for research discussed in this presentation include Hedwig Lee, Michael Esposito, Sadaf Hashimi, Mical Raz, Sarah Roberts, and Mischka Terplan.

Thanks to D. Brian Burghart for collecting and maintaining Fatal Encounters. Thanks to NJ Direct for collecting and maintaining the Force Report.

Child welfare data were made available by the National Data Archive on Child Abuse and Neglect, Cornell University, Ithaca, NY, and have been used with permission. Data from the AFCARS and NCANDS were originally reported to the Children's Bureau. Funding for the project was provided by the Children's Bureau, Administration on Children, Youth and Families, Administration for Children and Families, U.S. Department of Health and Human Services. The receiver of the original data, the funder, the Archive, Cornell University and their agents or employees bear no responsibility for the analyses or interpretations presented here.