

AUGUST 20, 2020

Ohio | Department of
Rehabilitation & Correction
Mike DeWine, Governor
Annette Chambers-Smith, Director

COVID-19 AND WASTEWATER TESTING

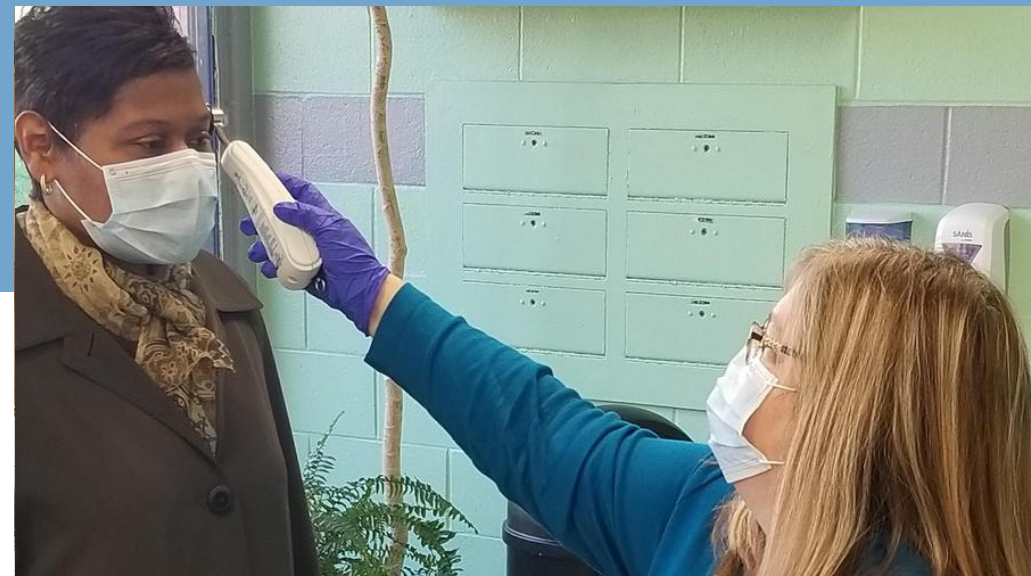
Director Annette Chambers-Smith

HOW WE GOT HERE



EARLY PREPAREDNESS

Governor DeWine and Director Chambers-Smith began preparations for COVID early on in February, before community spread in Ohio



DRC RESPONSE

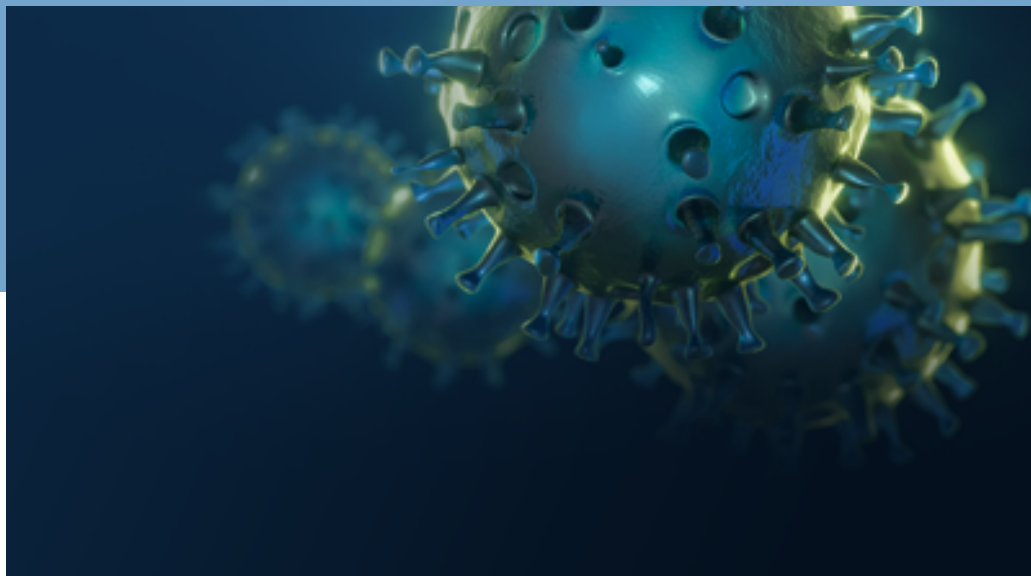
DRC met or exceeded all CDC or ODH guidelines throughout the pandemic, updating as situation evolved



DRC RESPONSE

Shutting down visiting, increasing sanitation, screening entry, removing co-pays, increased surveillance etc. etc.

HOW WE GOT HERE



COVID-19

Despite our efforts, Covid-19 began to spread throughout our facilities



PRISON OUTBREAK

In early March, we began to have an outbreak at Marion Correctional Institution that continued to emerge throughout housing units



MASS TESTING EXPERIENCE

In early April, we made the decision to conduct Mass testing at Marion Correctional Institution - The first prison system in the nation to do so

Lessons Learned

- Actionable testing plan
- 8-10% of population monthly, sampling, symptom responsive
- People orientated strategies versus environmental strategies

- The original goal was to see who was positive and isolate them.
- The level of asymptomatic positives was very high, making the idea of moving inmates impractical given open-barracks housing

New Testing Plan

Environmental Responses

ENVIRONMENT

- Cooperation with an Environmental Engineer
- Examined not just barriers and distancing, but:
 - HVAC, cold plasma, other technology
- Maximizing celled housing
- Releasing and diverting people to increase social distancing

WASTE WATER TESTING

- Not a replacement for testing, a supplemental indicator of general prevalence.
- Goal is to detect and have a small window of warning (5-7 days) to rally testing, supplies, personnel, and tracing to the location in order to better manage any outbreak
- Missouri is testing 5 facilities and has already seen early warning indicators

PILOTS

- Collaboration with The Ohio State University at CCI and ORW
- U.S. Environmental Protection Agency recently requested to move their pilot to NCI due to low prevalence

Ohio

Department of
Rehabilitation & Correction



MIKE DEWINE

GOVERNOR OF OHIO