

COVID-19 and the Digital Divide: Implications for Policy and Equity

WELCOME!

Please submit comments and questions at any time using the Q&A feature. These will provide valuable input even if we do not have time to answer them all today.

Societal Experts Action Network (SEAN)

- Created in response to COVID-19
- Connects decision-makers with expertise from the social and behavioral sciences
- Focused on actionable information for urgent policy questions

Sponsored by the National Science Foundation

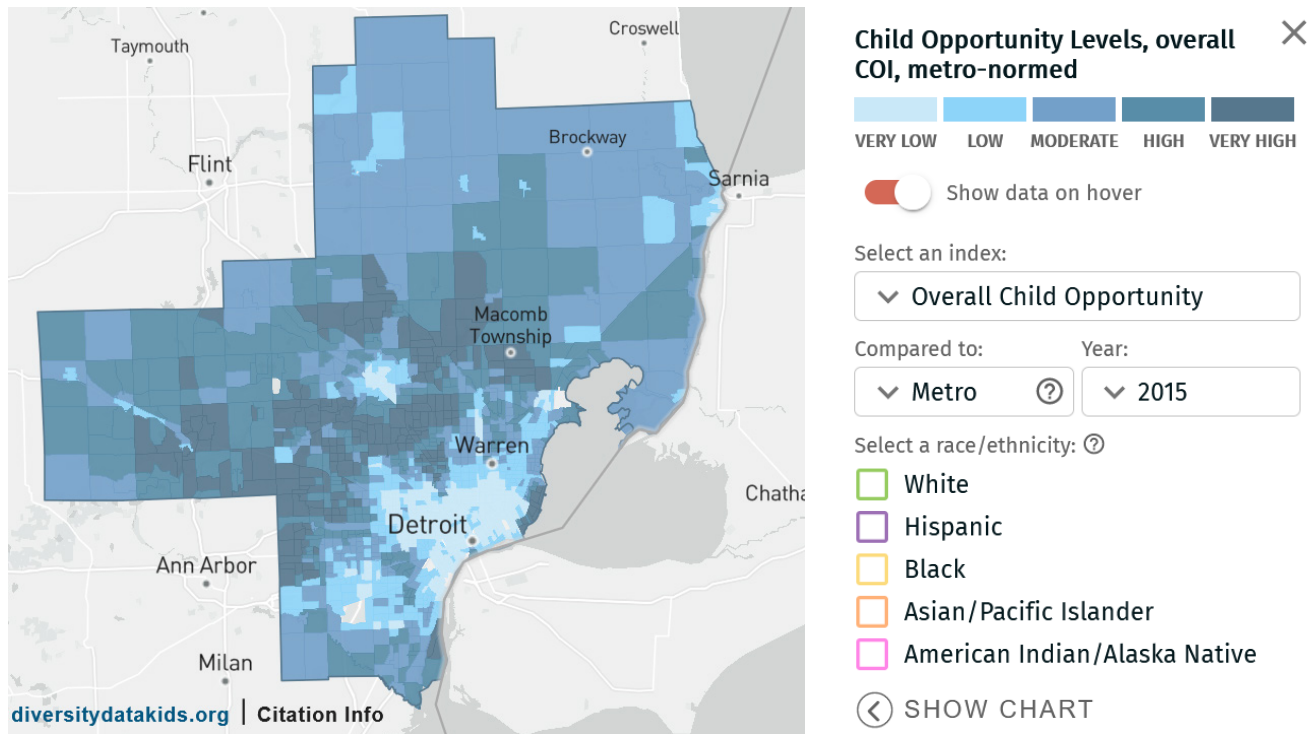
Purpose of Today's Webinar

Today's event will look at the consequences of COVID-19 on the digital divide and broadband access:

- Provide a brief overview of the state of broadband access nationwide, looking at infrastructure, connectivity, and affordability
- Discuss the impact on the K-12 education sector
- Gather a range of insights on actions being taken during the pandemic recovery

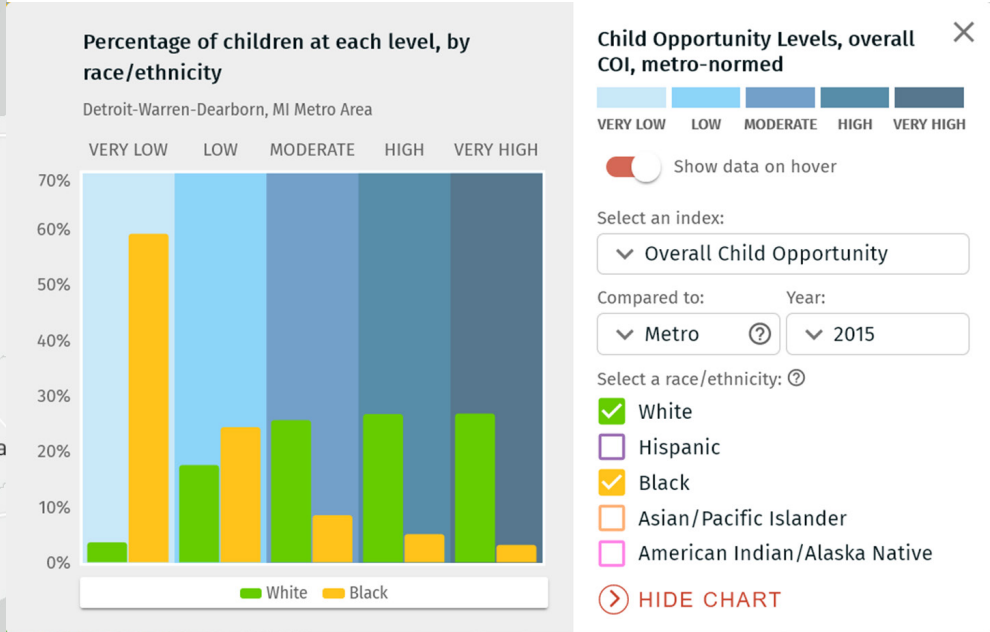
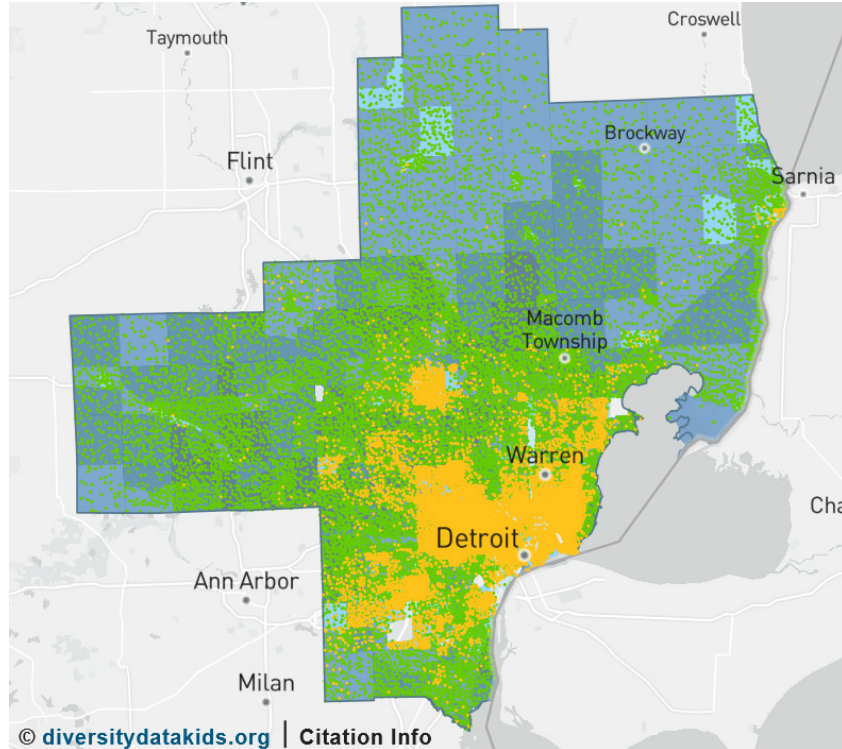
Child Neighborhood Opportunity in the Detroit Metropolitan Area

Source: diversitydatakids.org, Child Opportunity Index Maps



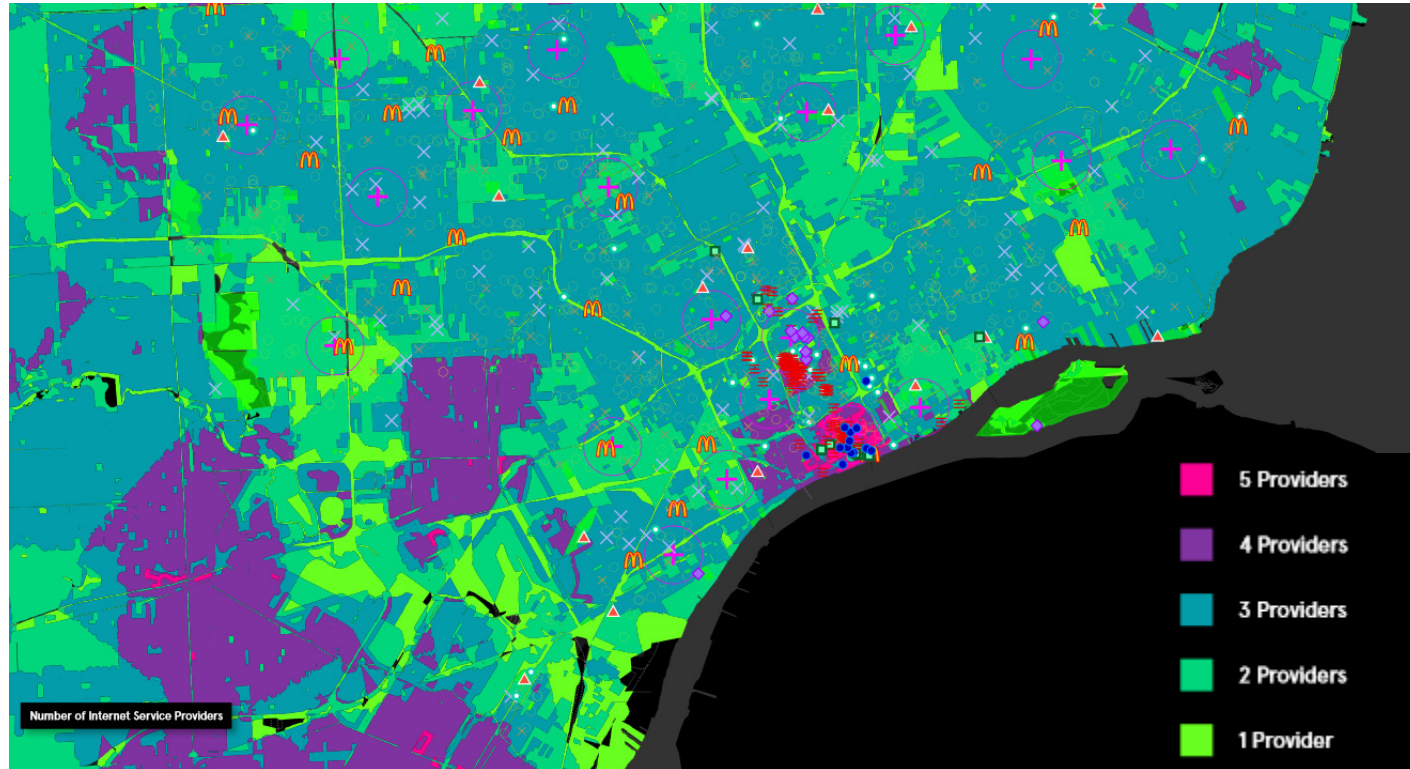
Black Children are concentrated in lower opportunity neighborhoods-Detroit Metropolitan Area

Source: diversitydatakids.org, Child Opportunity Index Maps



Digital divide across Detroit neighborhoods: Number of Internet Providers

Source: University of Michigan, Urban Collaboratory



Session Overview

Part I: Stage Setting - COVID-19 and Broadband Access

Part II: Decision Making at State and Local Levels

Integrated Discussion: Opportunities to Ensure Equitable Broadband Access for All

Please submit comments and questions at any time using the Q&A feature. These will provide valuable input even if we do not have time to answer them all today.

COVID-19 and the Digital Divide: Implications for Policy and Equity

Thank you for joining us!

Please use the links in the agenda and the chat for more information on this and other SEAN projects.