



Integrating Public and Ecosystem Health Systems to Foster Resilience

Environmental change and public health in Africa - closing the gap
between evidence and practice

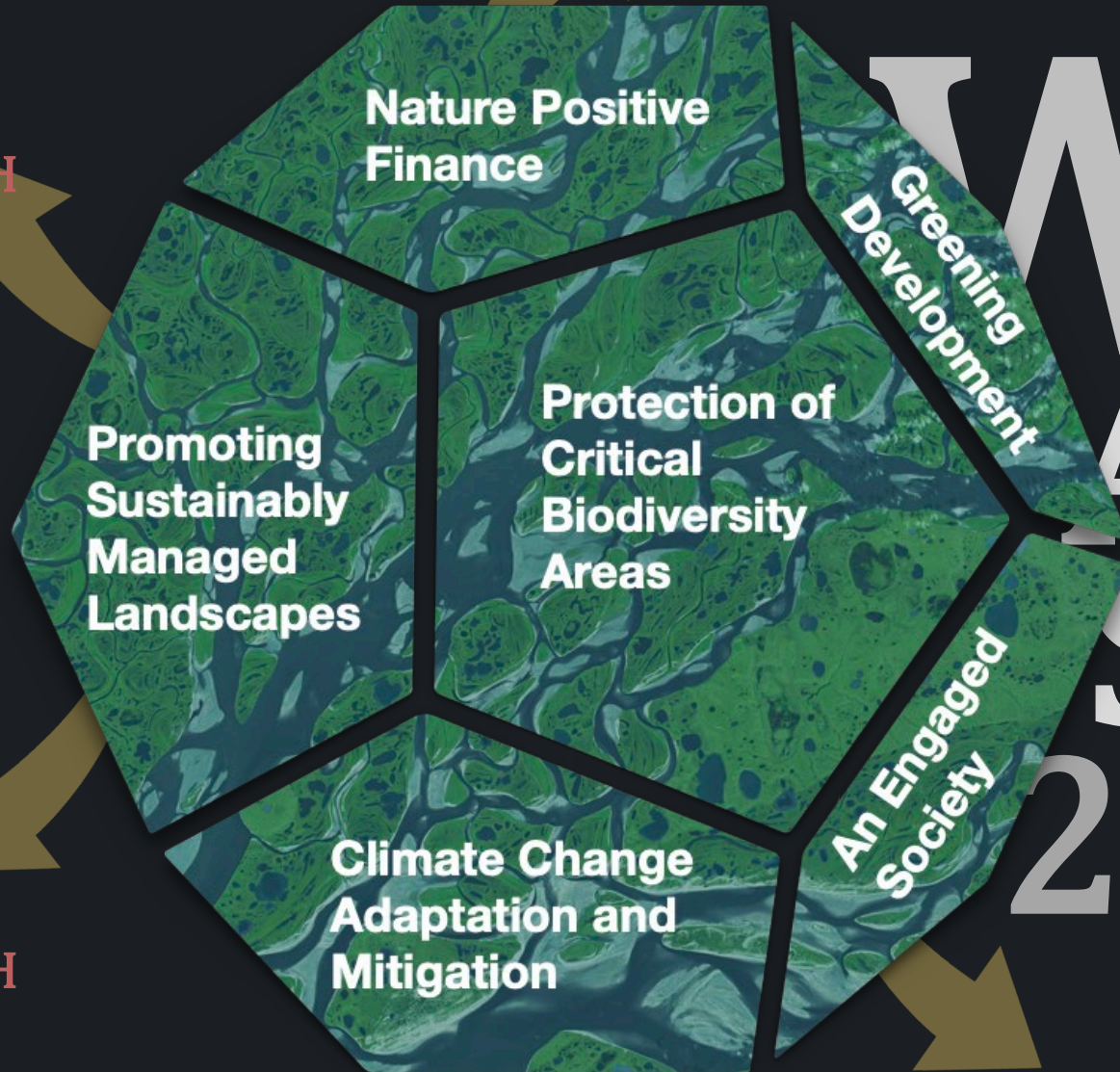
James Hassell PhD BVetMed | Smithsonian's Global Health Program
& Yale School of Public Health

PUBLIC
HEALTH

PUBLIC
HEALTH

PUBLIC
HEALTH

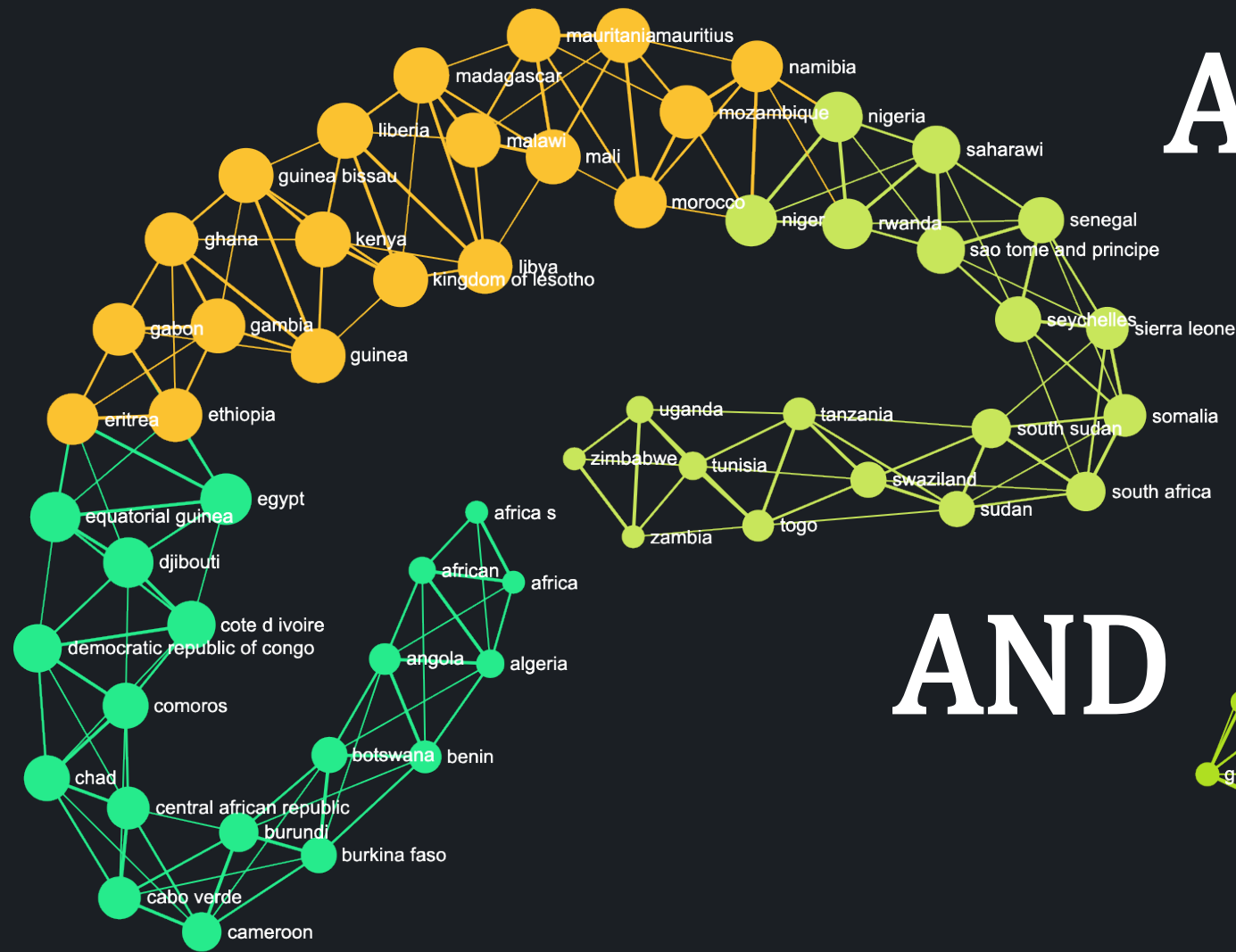
PUBLIC
HEALTH



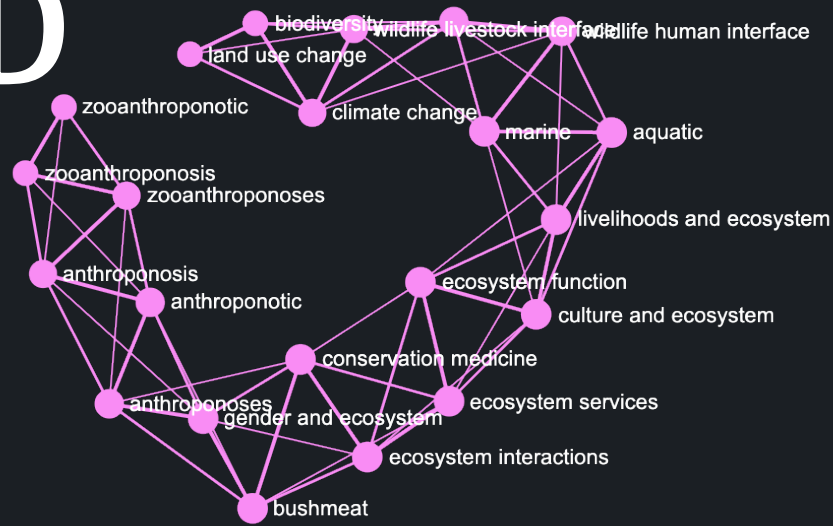
WWF AFRICA STRATEGY 2021-2025



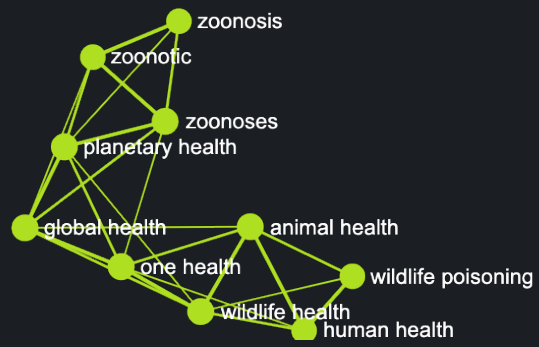
Systematic literature review on the natural environment and health in Africa (database contains 971 articles)

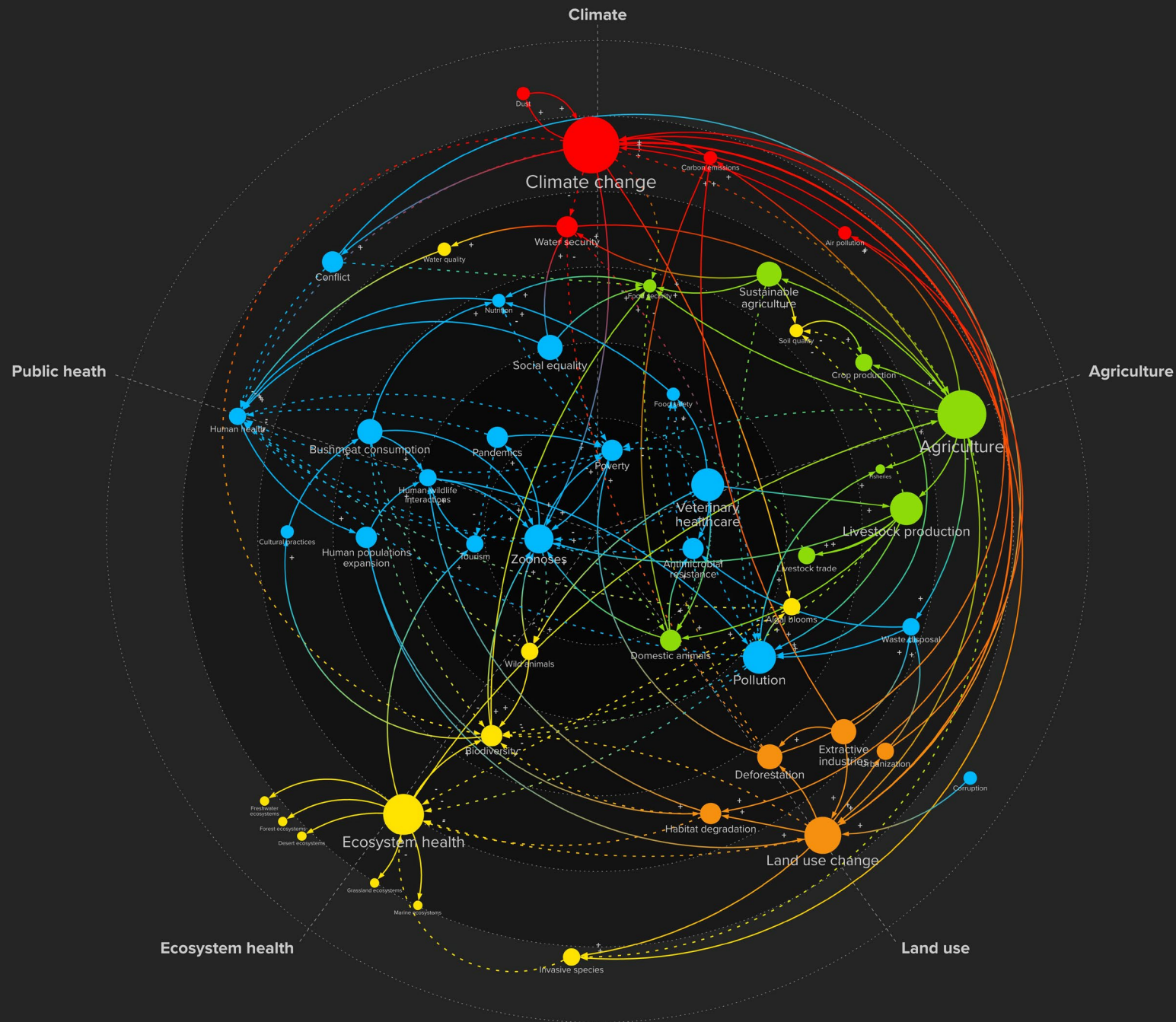


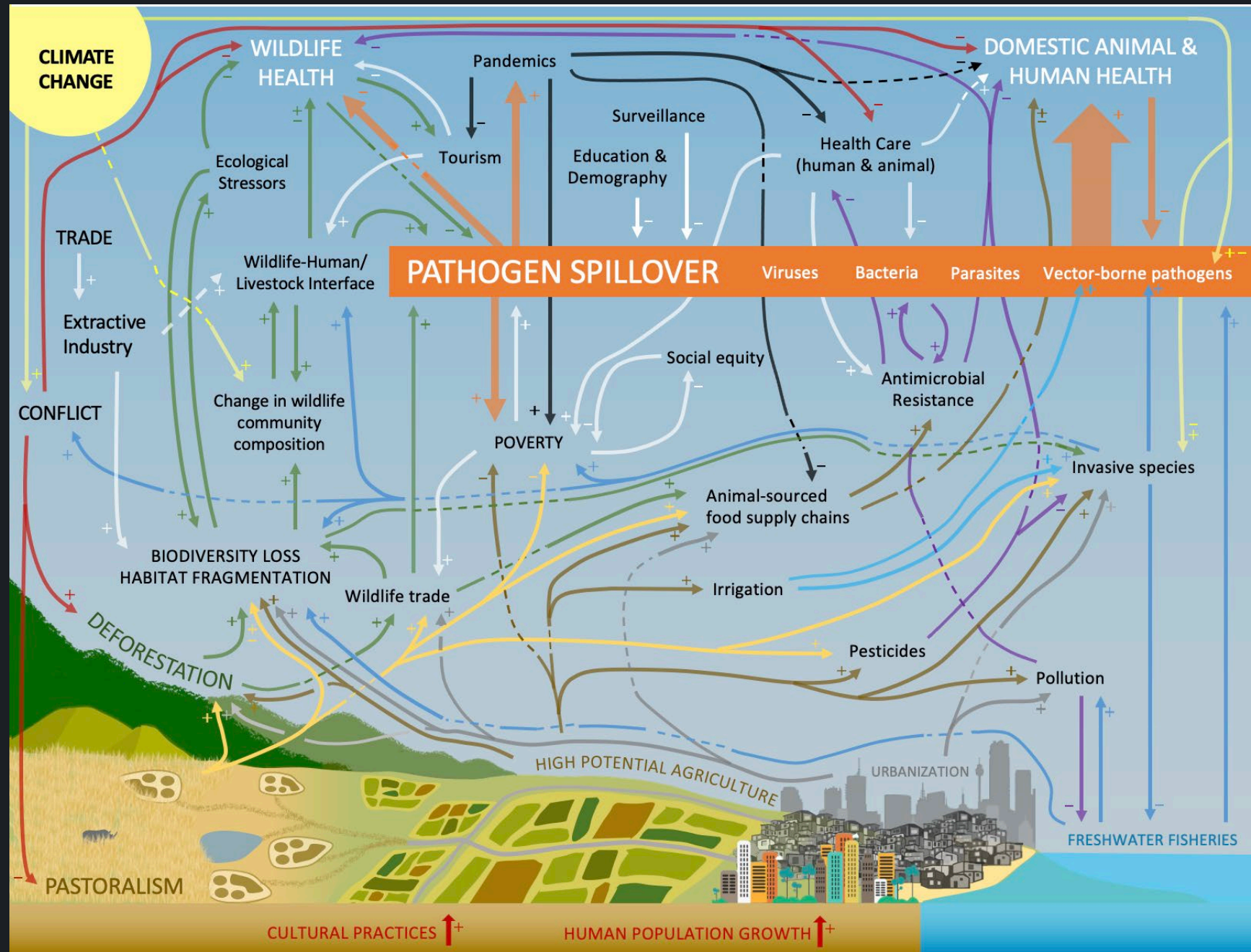
AND

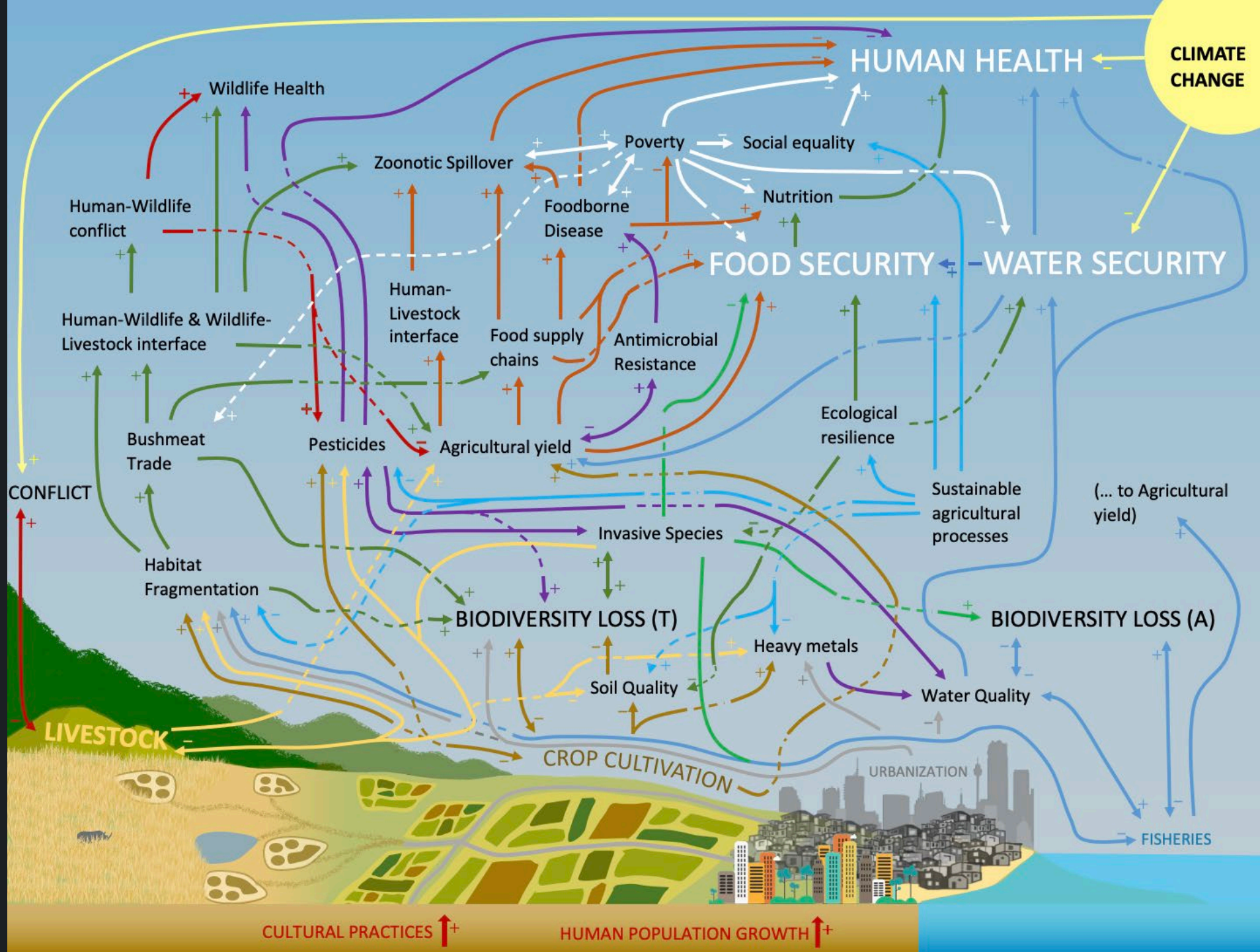


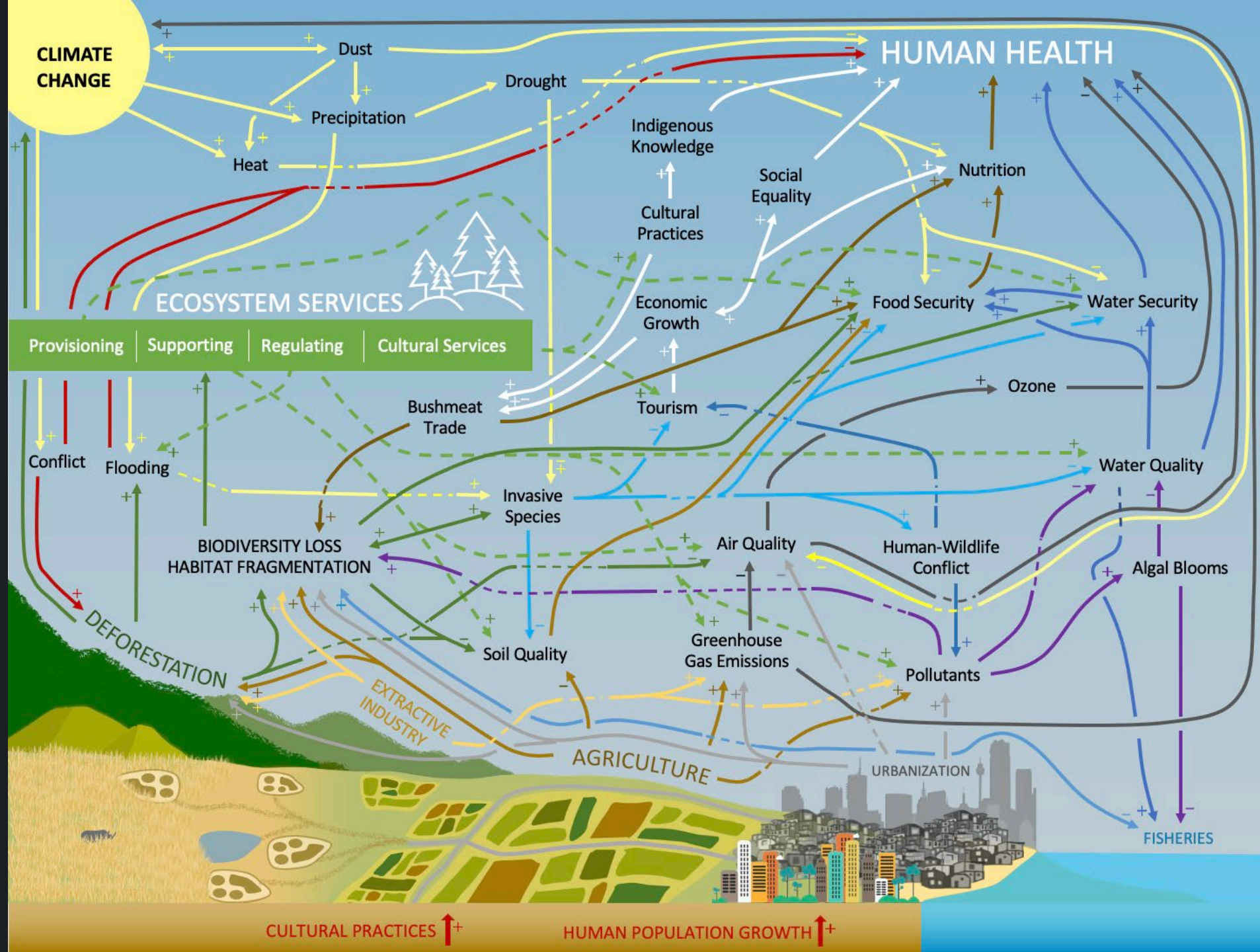
AND

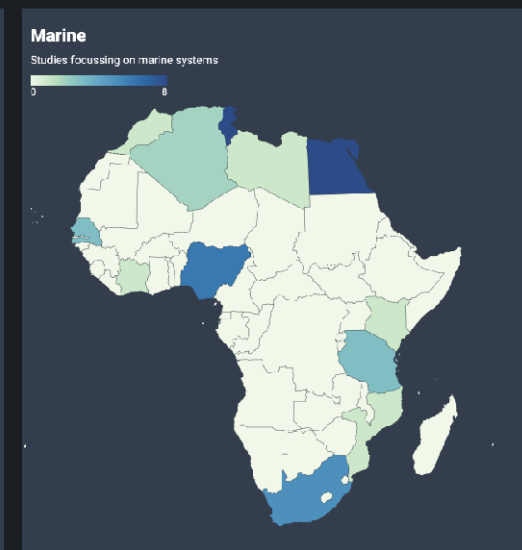
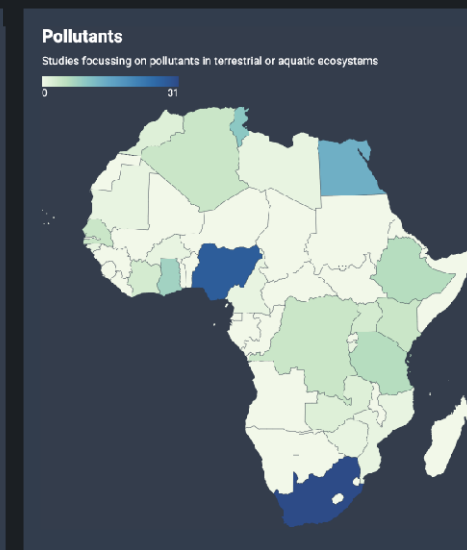
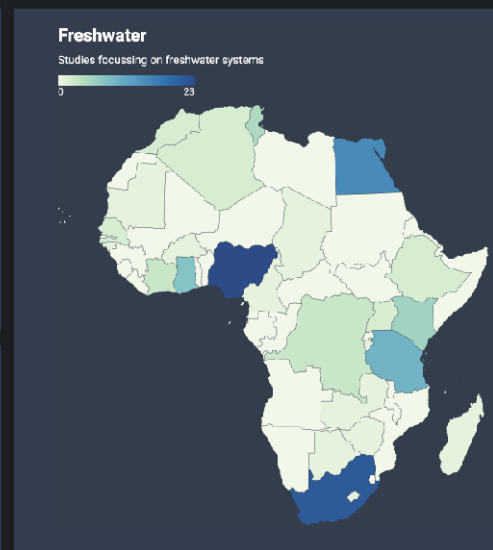
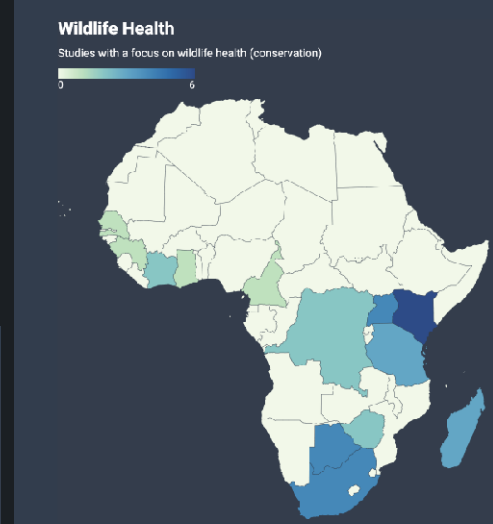
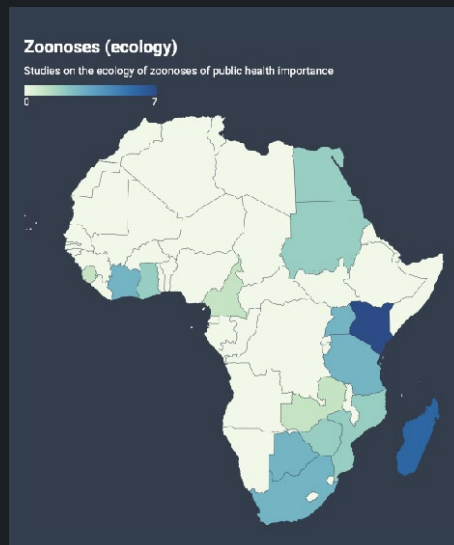
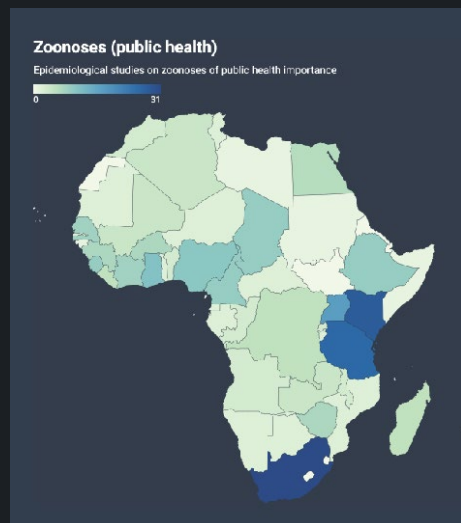












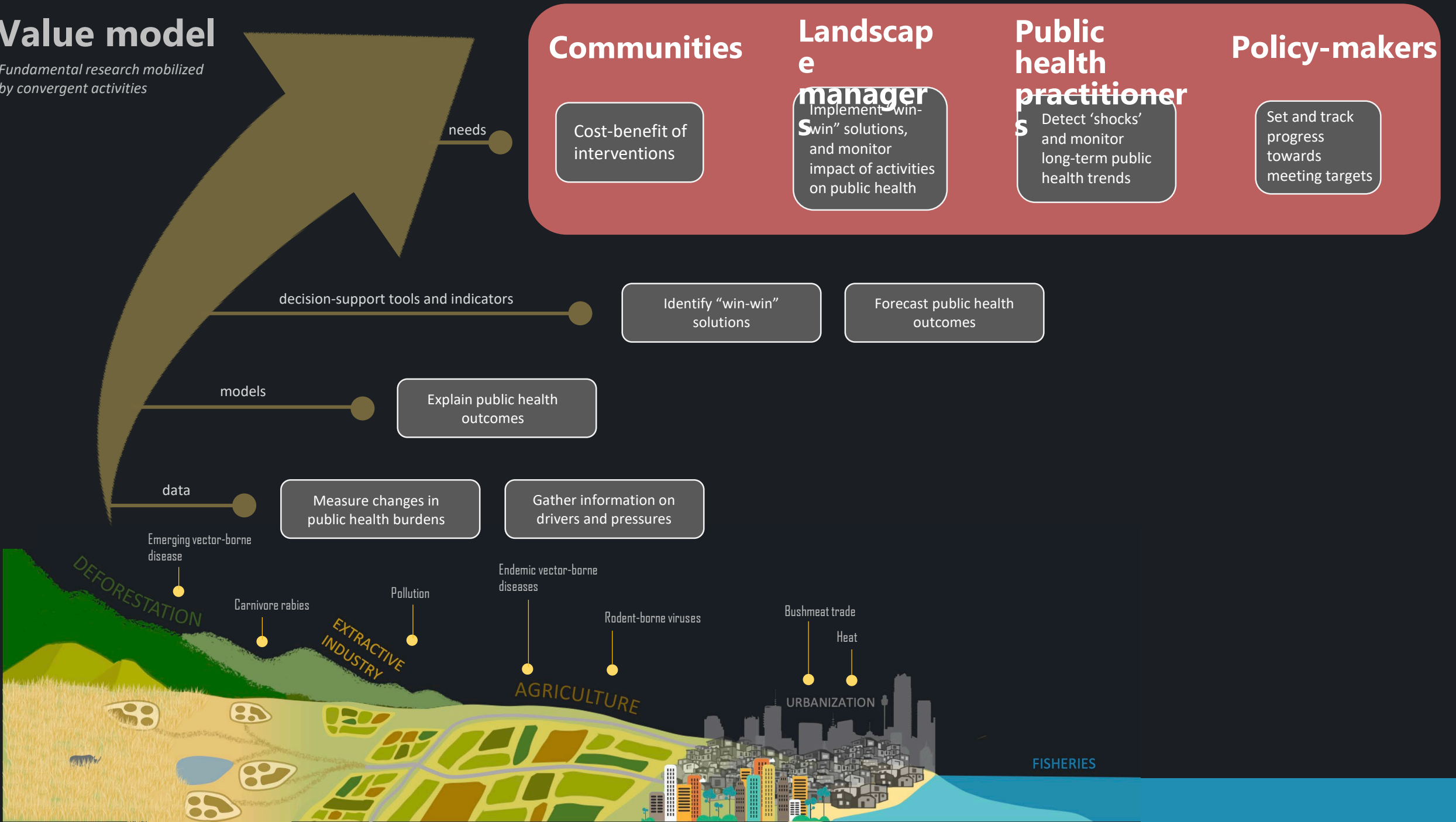
Geographic bias in research being conducted at the interface between ecosystems and public health

Maps showing the distribution of research conducted within different thematic areas of One Health across the African continent. Patterns that emerge indicate differing levels of investment in research activities (with roots in historical inequality and societal stability) and public health priorities.

Value model

Fundamental research mobilized
by convergent activities

Fundamental research





LANCET COUNTDOWN:
TRACKING PROGRESS
ON HEALTH AND
CLIMATE CHANGE

[Home](#)

[About](#)

[2021 Report](#)

[News & Events](#)

[Community](#)

[Resources](#)

[Search](#)



[EXPLORE OUR DATA →](#)

Tracking the connections between public
health and climate change

