

Using Sensors to Capture Human Geographical Behaviors

Grant McKenzie

Department of Geographical Sciences
Center for Geospatial Information Science
University of Maryland, College Park
gmck@umd.edu | @grantdmckenzie



- Geographical Science is an umbrella discipline

SECURITY

London tosses out Wi-Fi-sniffing 'smart bins'

The rubbish receptacles were all about serving up targeted ads -- a trick that required them to track phone data of passersby.

BY RICHARD TRENHOLM / AUGUST 12, 2013 7:13 AM PDT

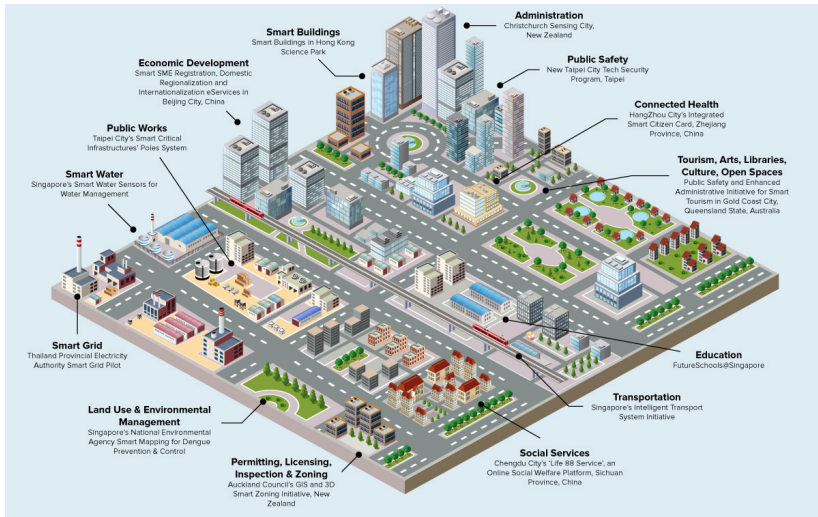


- Geographers are bridge builders

Opportunities



Opportunities



Mobile Devices



Questions

- What can we do as bridge building geographical scientists to further facilitate this discussion?

Questions

- What can we do as bridge building geographical scientists to further facilitate this discussion?
- What `existing` theories can be tested with these new sources of data... and what `new` theories can be designed?

Questions

- What can we do as bridge building geographical scientists to further facilitate this discussion?
- What `existing` theories can be tested with these new sources of data... and what `new` theories can be designed?
- What are the next steps? Opportunities for researchers in the geographical sciences?

Questions

- What can we do as bridge building geographical scientists to further facilitate this discussion?
- What `existing` theories can be tested with these new sources of data... and what `new` theories can be designed?
- What are the next steps? Opportunities for researchers in the geographical sciences?
- What limitations are we facing as an umbrella discipline?

Using Sensors to Capture Human Geographical Behaviors

Grant McKenzie

Department of Geographical Sciences
Center for Geospatial Information Science
University of Maryland, College Park
gmck@umd.edu | @grantdmckenzie

