

# The Criticality of Authoritative Data Sources

**Marie C Peppler, USGS Emergency Management Coordinator**  
**Chris Cretini, USGS National Geospatial Program**

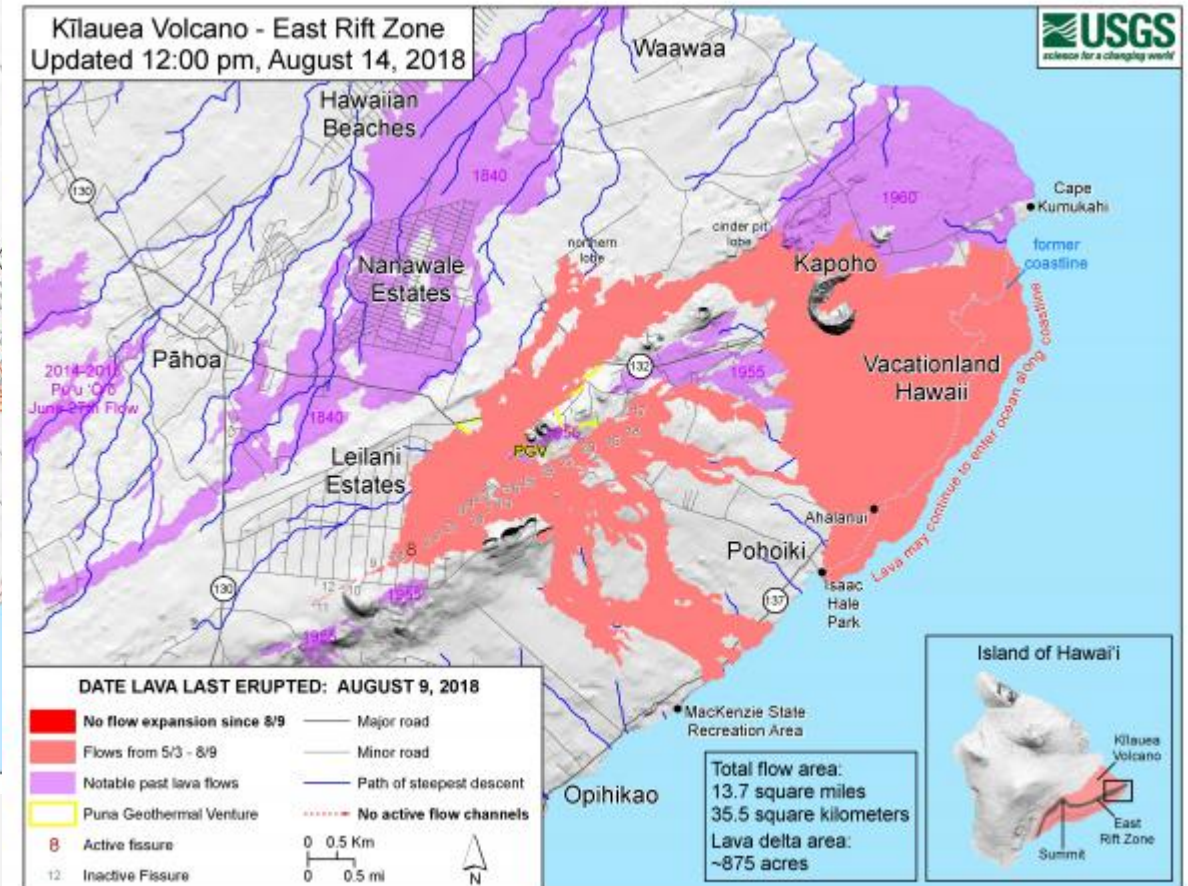
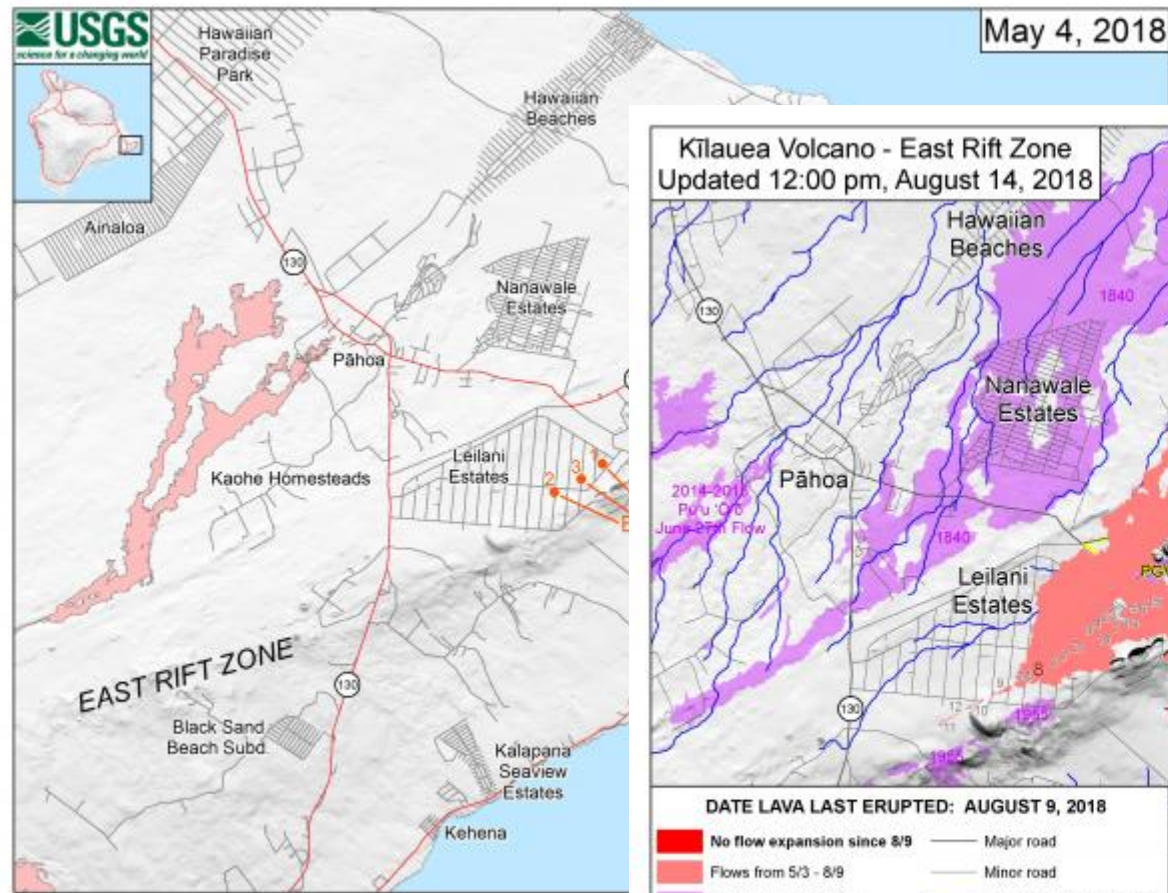
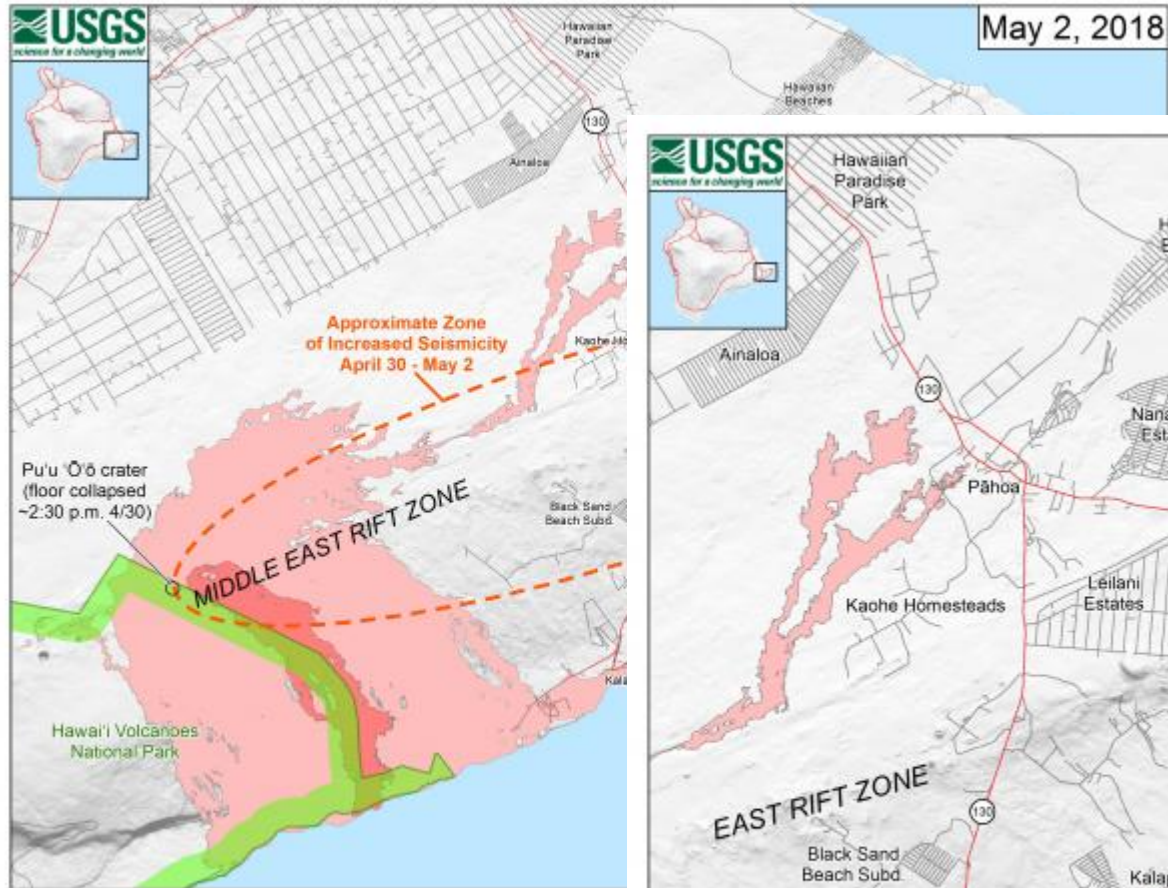
# USGS Mission

- The USGS serves the Nation by **providing reliable scientific information to describe and understand** the Earth; minimize loss of life and property from natural disasters; manage water, biological, energy, and mineral resources; and enhance and protect our quality of life.





# Much of the science that gets used at an Emergency Operations Center gets ingested through the geospatial unit



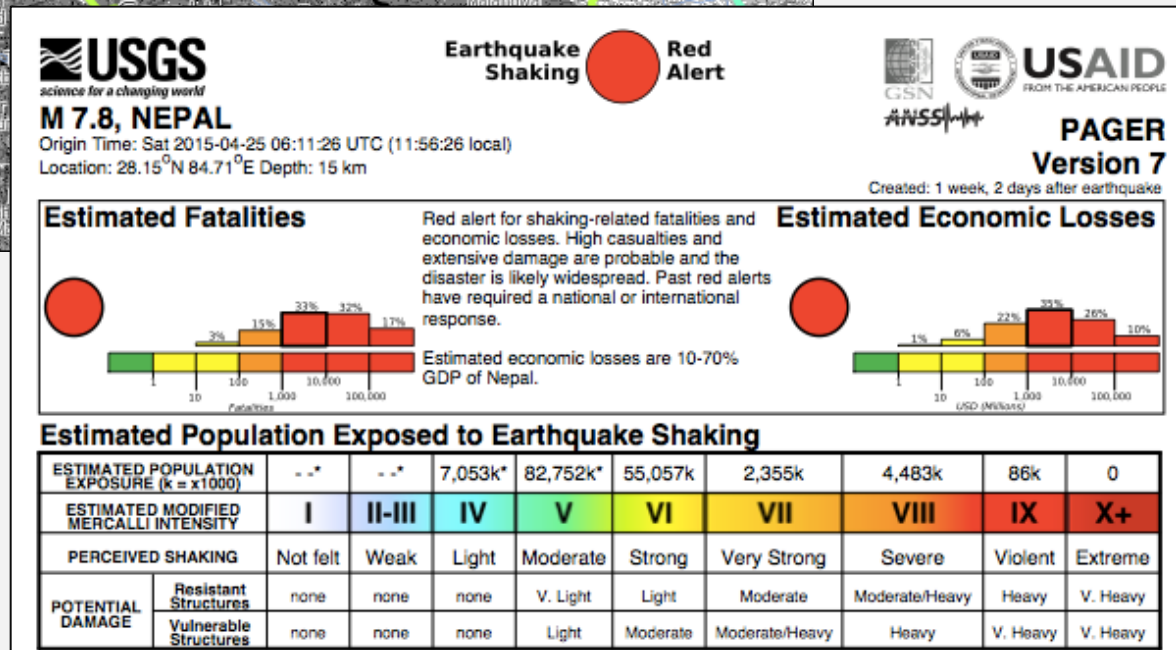
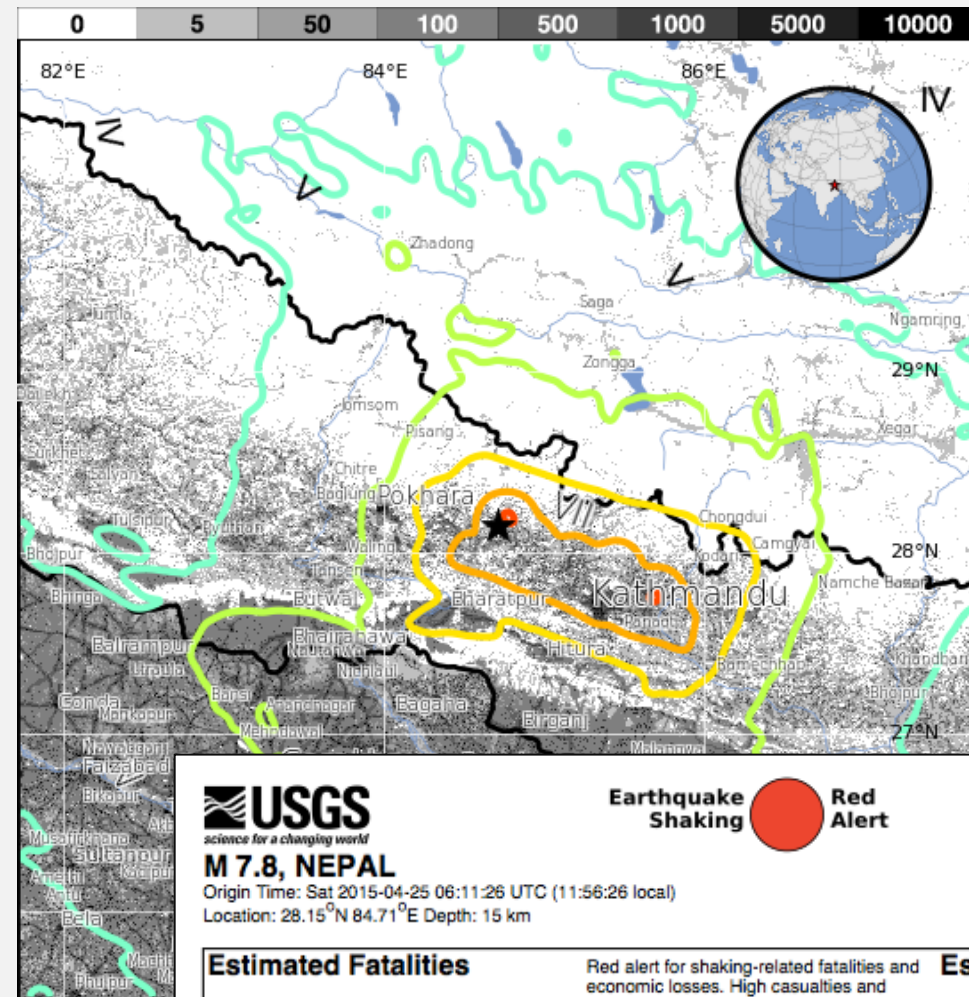
Kilauea Volcano, Hawai'i

# PAGER

## Prompt Assessment of Global Earthquakes for Response

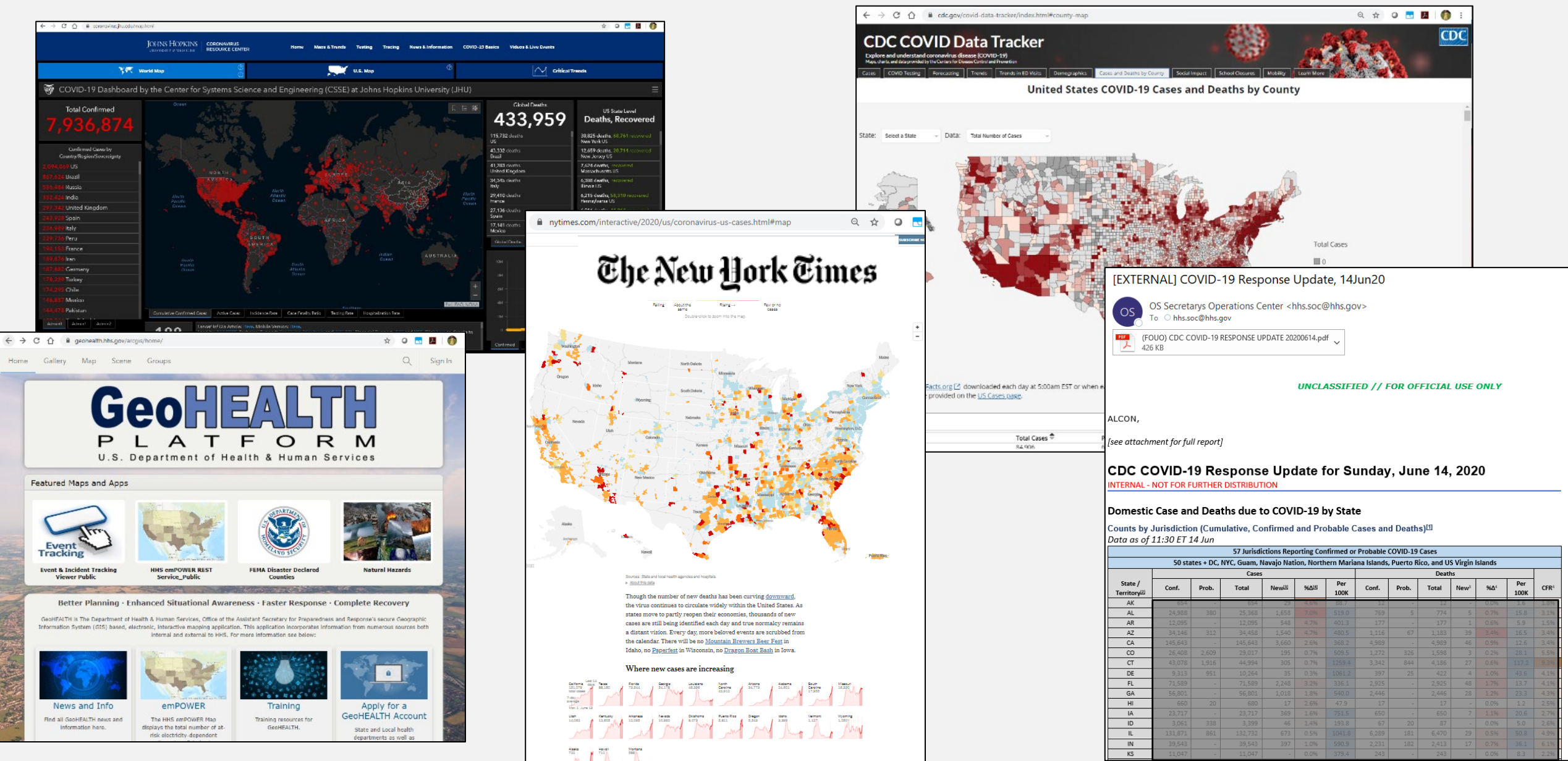
USGS is the global source of information for Earthquakes

- Correlates ShakeMap with population density database to estimate scale of potential disaster.
- New versions released when new information changes the forecasted impacts.
- Alert levels for estimated fatalities and economic losses.





# Pandemic data is complex, local, and not our own



# So what did we do?

- **We need to make operational decisions, and fast!, just like everyone else.**
- **The most updated and most stable geo-services win the day, until something better comes along...**
  - **What is “better”**
  - **What is “good enough for my use”**



# USGS COVID-19 Event Support Map

The USGS established the Geospatial Information Response Team (GIRT) to facilitate the effective coordination, communication, and dissemination of geospatial data and information during a disaster event.

## Event Support Maps

The USGS, Event Support Map (ESM) is used by the Bureau to facilitate Geospatial Information Response Team (GIRT) operations and to support situational awareness and resource management for the Bureau and the Department of the Interior. ESM's support a timely response and mitigation of natural hazards and provide critical information about the Earth and its processes.

### Department of Interior Access (Login Required)

#### Storm Team

- [Hurricane 2020](#)
- [2019 Hurricane Dorian](#)
- [2019 Tropical Storm Barry](#)
- [2018 Hurricane Michael](#)
- [2018 Hurricane Florence](#)

#### Flood Team

- [2020 USGS Flood Team](#)

#### Other Hazards

- [COVID-19](#)
- [2018 Anchorage Earthquake](#)
- [2018 Kilauea](#)

### Public Access

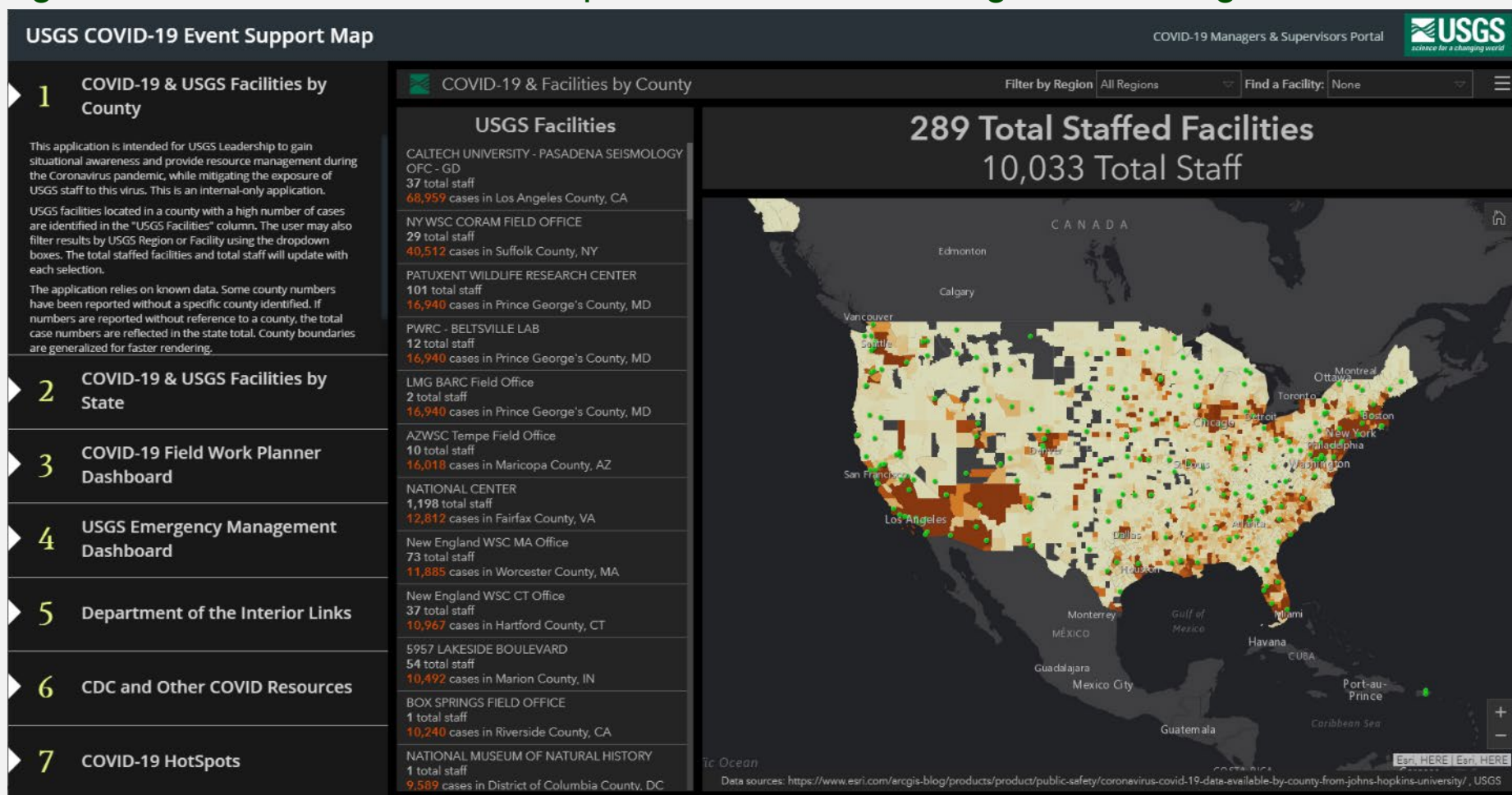
- [MRCTI Viewer](#)
- [2019 Hurricane Dorian](#)
- [2018 Hurricane Michael](#)
- [2018 Hurricane Florence](#)





# USGS COVID-19 Event Support Map

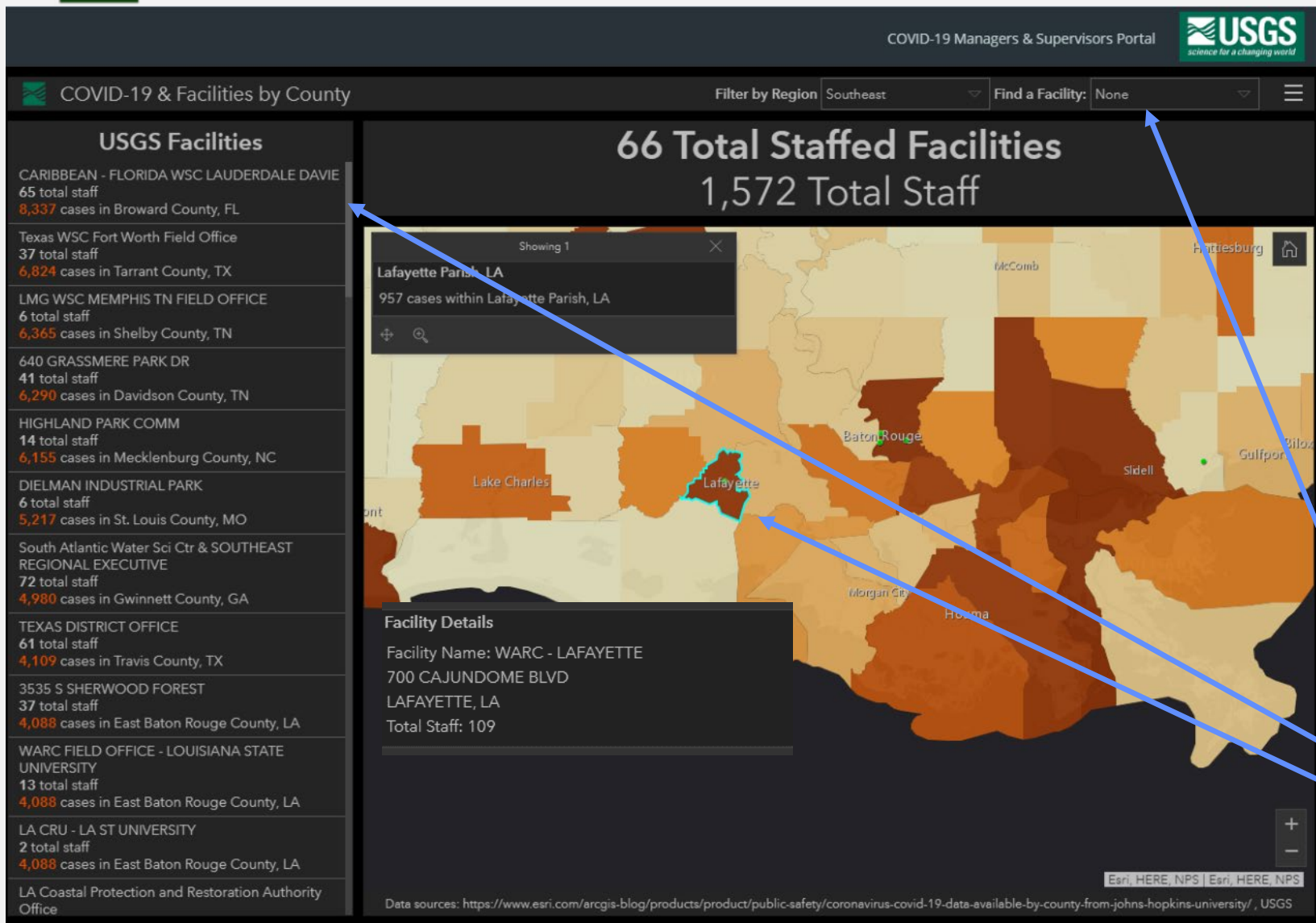
The COVID-19 ESM is maintained by the Geospatial Information Response Team (GIRT) and used by USGS Leadership to gain situational awareness and provide resource management during the Coronavirus pandemic.







# USGS COVID-19 Event Support Map



## Summary Information

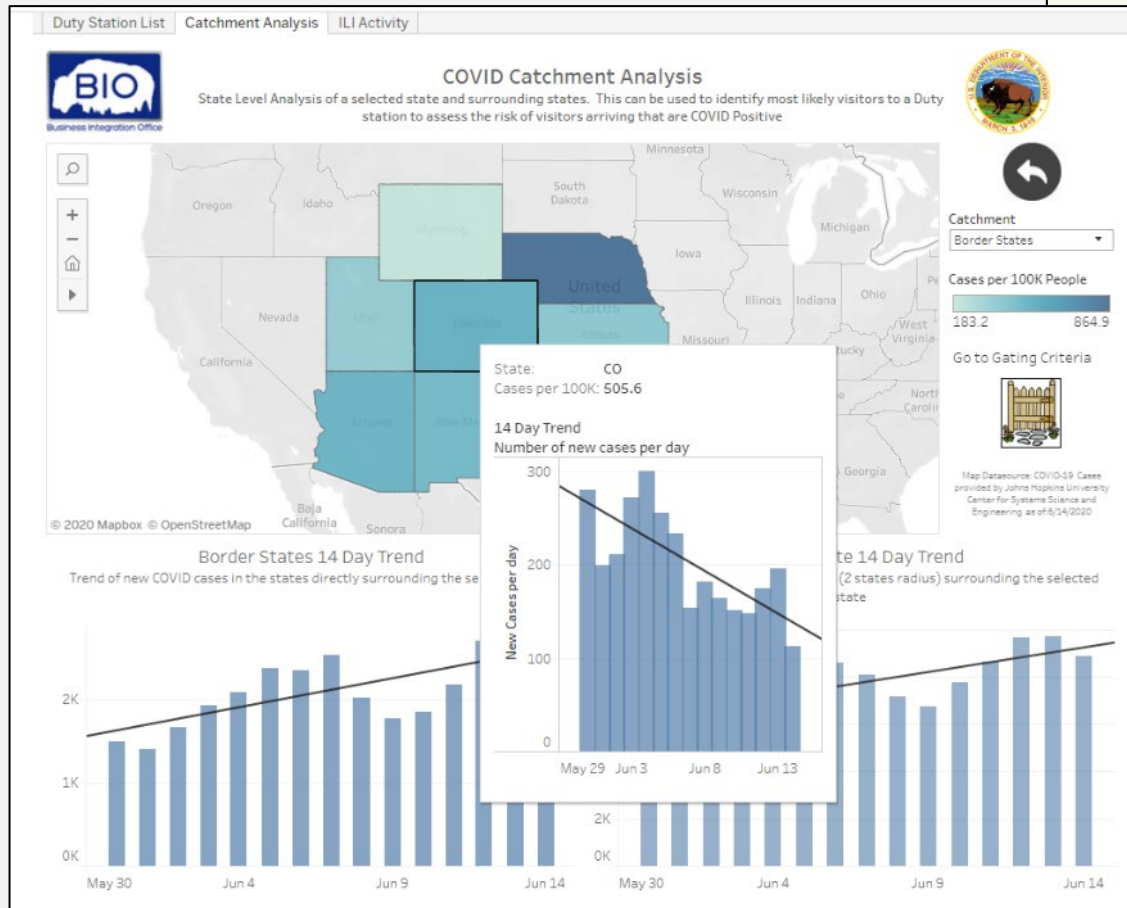
- Requested March 11, 2020
- Published March 13, 2020
- Access through Single Sign-On AD account
- Internal resource USGS & DOI
- For Managers; 60 – 80 views/day
- Data Sources
  - USGS Admin – facilities / personnel
  - Case Data – JHU
- Updated – every 4 hours
- Included in DOI Common Operating Picture
- Provides access to other Agency COVID Links
- One-Stop for Link Critical COVID Information

## Indicators include

- USGS Regional and Facility View
- Highest county case count / facility / staff
- Individual Facility Information

# So how do we move forward?

## What are these mythical Gating Criteria?



Interior Operations Center (IOC) Common Operating Picture

(IOC 2020-008) COVID-19 - World Wide 15JUN20 0800 EDT

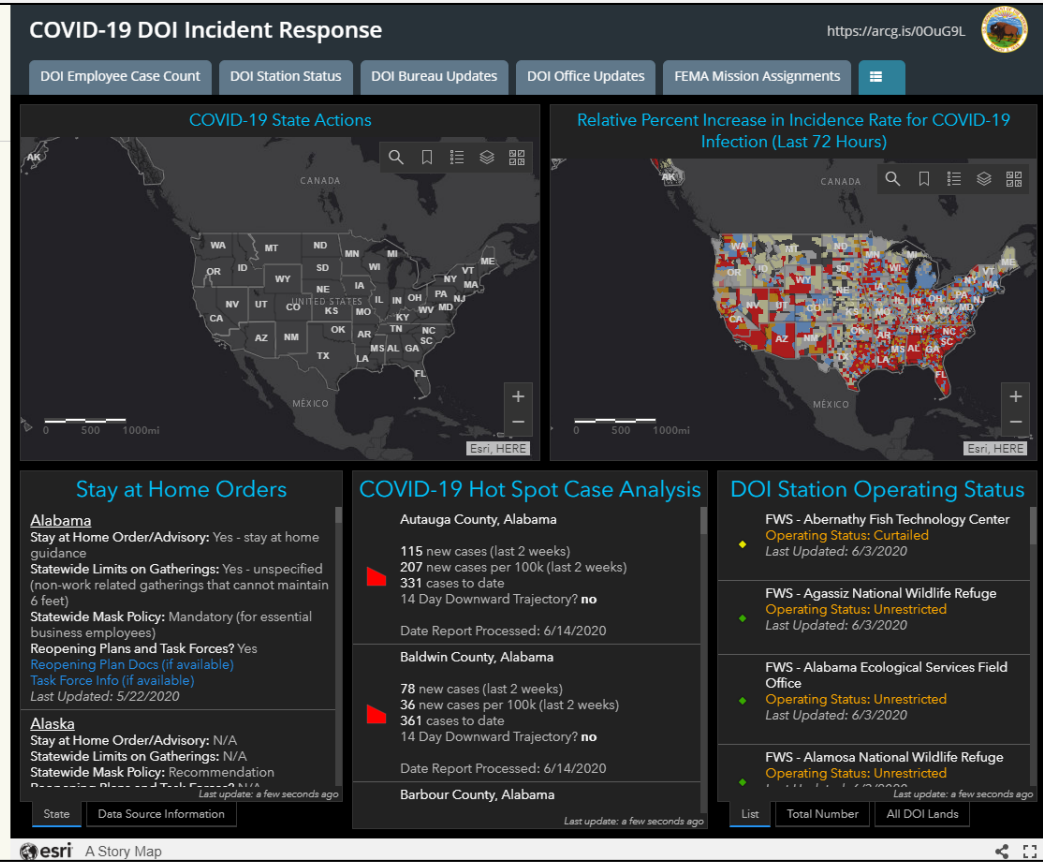
### Emergency Management

This site is accessible for DOI employees with the following roles: Supervisors Guide, informational, preparedness tips, and other.

The EAP is free, confidential, and for more information, visit the [Employee Program](#) website.

### Activity Visualization tool

This tool is just one tool to help you consider one or more DOI duty stations. This enables you to select a duty station and see information related to the [House reopening criteria](#) of COVID cases and symptoms. You can filter by bureau and select the duty station from the list. Three maps will be populated related to the selected duty station. The one farthest to the left shows the confirmed COVID cases for the county of the duty station compared to the rest of the country. The middle map addresses the White House criteria related to the trend of new cases. This shows the moving



Where do I find the “*Downward trajectory of positive tests as a percent of total tests within a 14-day period (flat or increasing volume of tests)*” Data?

# Questions?



**Marie C. Peppler**

Bureau Emergency Management Coordinator

**[mpeppler@usgs.gov](mailto:mpeppler@usgs.gov)**  
**703.648.5033**

**Chris Cretini**

National Map Liaison and Geospatial  
Information Response Team

**[cretinic@usgs.gov](mailto:cretinic@usgs.gov)**  
**337-266-8621**