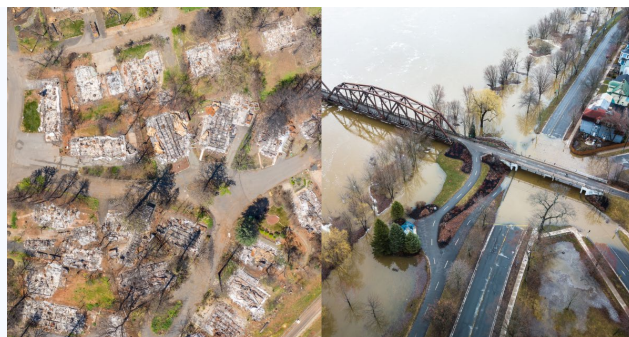


# Changing of Local Landscapes: Long-term recovery from natural disasters

June 3, 2024

Keck Center, 500 5th St NW, Washington DC

Keck 101



## MONDAY, JUNE 3, 2024

Natural disasters such as wildfire, hurricanes, flooding and earthquakes disrupt transportation systems, communication systems, energy systems, economic systems, and populations and communities. Disasters result in loss of infrastructure that forces people and activities to relocate, either temporarily or permanently. Some people and activities inevitably remain in the affected location. Support from government agencies and NGOs often contributes to shaping these changed landscapes. The problems are multi-dimensional, including both providing resources needed for people to continue their lives, and cleaning up or reducing environmental impacts on disaster damages. This meeting of the Geographical and Geospatial Sciences Committee will explore the long-term geospatial changes local landscapes experience after natural disasters.

## EASTERN TIME

1:00–1:10pm

### Welcome

**Pat McDowell** and **Kristen Kurland**, Co-Chairs, Geographical and Geospatial Sciences Committee

1:10–1:50pm

### Disaster recovery planning with a long-term local focus

*Speaker:*

- **Jeff Rubin**

*Moderator:* **Pat McDowell**, Member, Geographical and Geospatial Sciences Committee

1:50–2:45pm

### Built Environment and Infrastructure

*Panelists:*

- **Karl Kim**, University of Hawai'i
- **Barry Long**, Urban Design Associates

*Moderator:* **Oceana Francis**, Member, Geographical and Geospatial Sciences Committee

2:45–2:55pm

### Break

2:55–3:50pm

### Social Impacts

*Panelists:*

- **Andrew Rumbach**, Urban Institute
- **Jason Rivera**, John Jay College of Criminal Justice, CUNY

*Moderator:* **Elisabeth Root**, Member, Geographical and Geospatial Sciences Committee

3:50–4:45pm

### Tools for Long-term Planning

*Panelists:*

- **Melissa Deas**, DC Chief Resilience Officer
- **Robert Kain** and **Sujan Shrestha**, Houseal Lavigne
- **Ryan Lanclos**, ESRI

*Moderator:* **Marguerite Madden**, Member, Geographical and Geospatial Sciences Committee

**4:45–5:00pm**   **Wrap-up**

**Pat McDowell** and **Kristen Kurland**, Co-Chairs, Geographical and Geospatial Sciences Committee