



Human-Animal Interactions in the Research Environment

ILAR Roundtable Workshop

Session 7 – Tools, Processes, Lessons Learned



CHAPMAN
UNIVERSITY

Bruce W. Kennedy MS RLATG CMAR CPIA EdD
IACUC administrator
member of the ILAR Roundtable



Julie Mattison PhD, NIA/NIH
Tools, Processes, and Lessons Learned

Angela Alfonso MS CMAR, DVR/NIH
Other Stressors in Laboratory Animal Care:
A Technician's Perspective





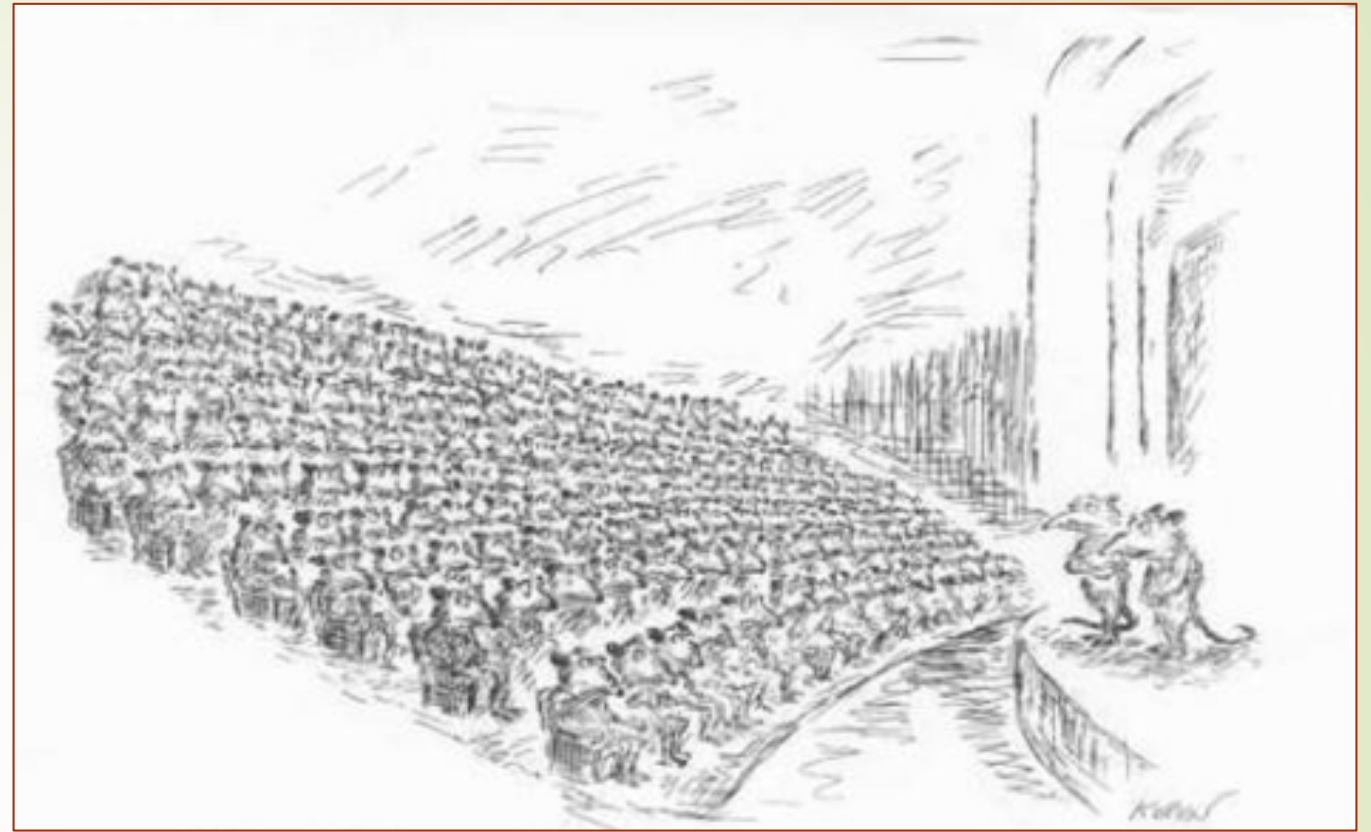


*Mattie, a rescued dog
then, in Fall 2015, a tri-pawed*





The world of Tg mouse technology



*Your father and I want to explain why
we've decided to live apart
(George Plimpton)*

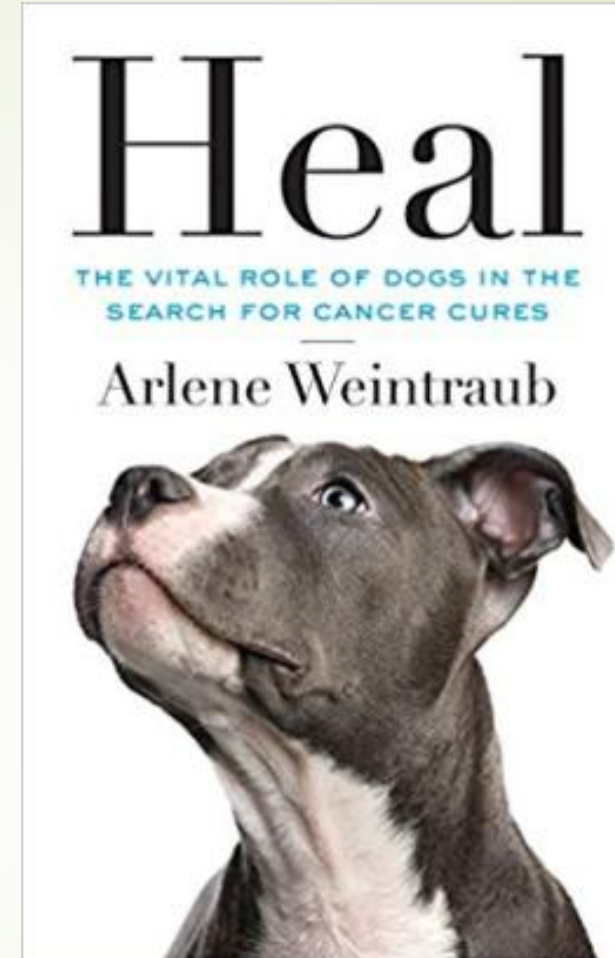
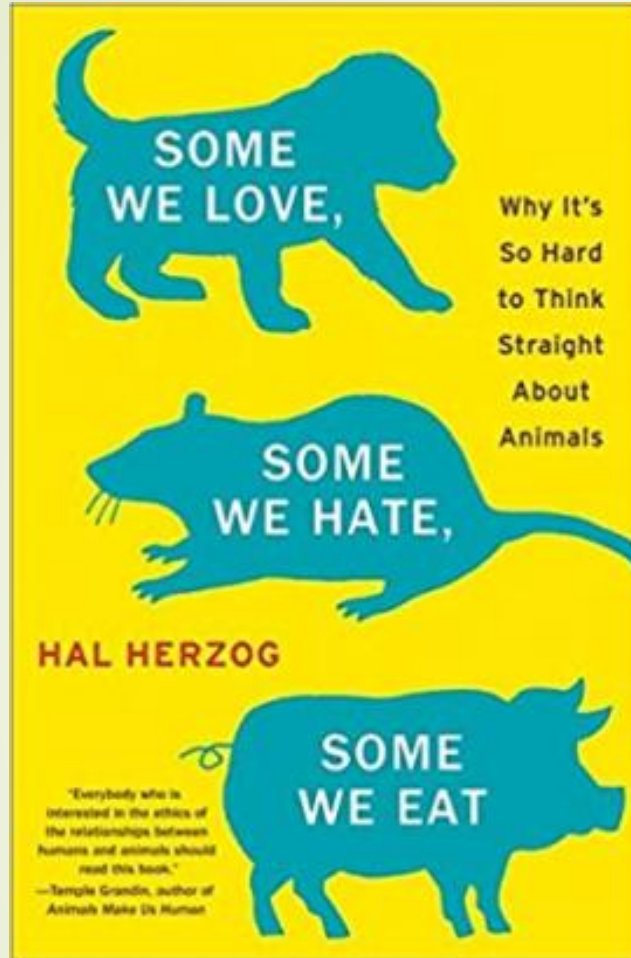




Brick in the Wall follows the life and legacy of Joshua Frase, and his family's journey of finding a cure for his rare disorder, myotubular myopathy (MTM). Hope is found in the biomedical research industry and the amazing people and animals that serve research. This film is a part of a storytelling collection, Love Letter Series, presented by Transnetyx. Go to [loveletterseries.com](https://www.loveletterseries.com/brickinthewall) to learn more.

<https://www.loveletterseries.com/brickinthewall>







Compassion Fatigue *in the* Animal-Care Community

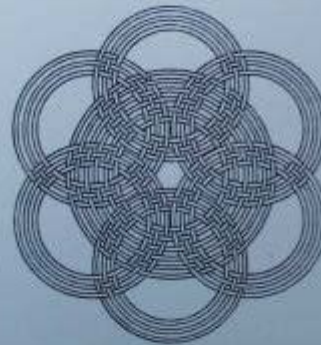


by
Charles R. Figley Ph.D.
and
Robert G. Roop, Ph.D.

THE HUMANE SOCIETY
OF THE UNITED STATES

The Human/ Research Animal Relationship

*A compilation of presentations
from three workshops
held on this subject
during 1992-1994*



*Edited by Lee Krulwich,
Stephen Mayer &
Richard C. Simmonds*

Published by the

Scientists Center for Animal Welfare
7833 Walker Drive, Suite 340
Greenbelt, MD 20770

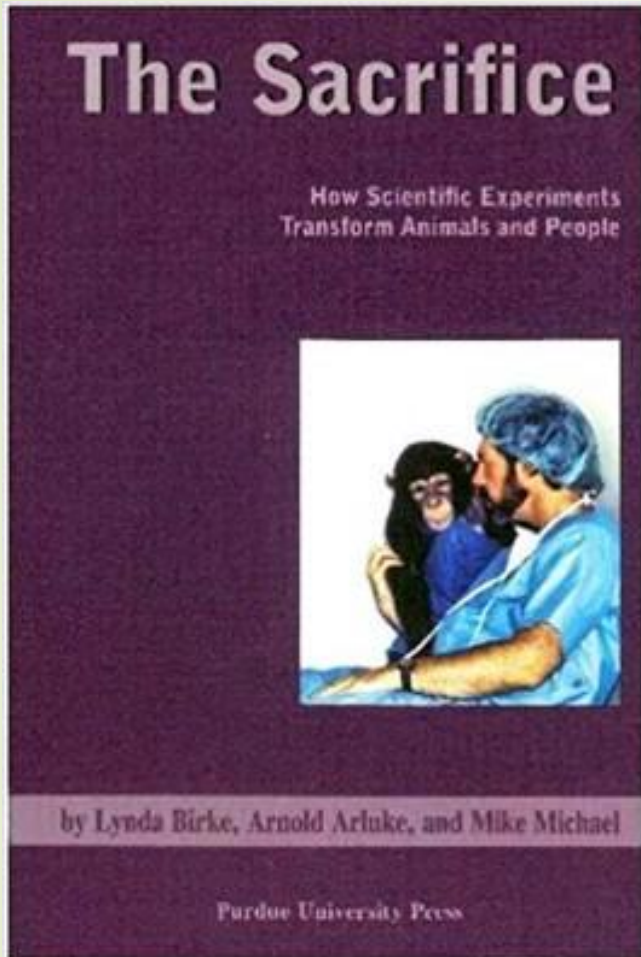
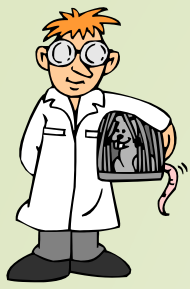
May 1996

The National
Academies of

SCIENCES
ENGINEERING
MEDICINE

ILAR Roundtable

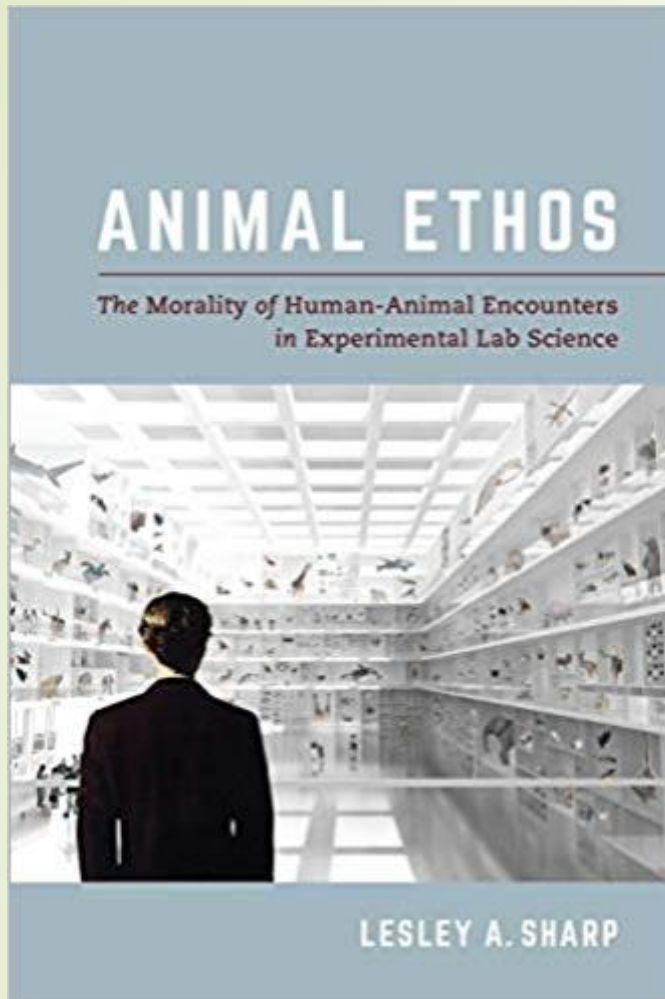




“... the laboratory rodent: as tool and as naturalistic animal. It is that ambiguity that facilitates the unease many lab workers voice about using animals; for all that standardization and control underlie scientific experiments, variability creeps in and brings with it an animal much closer to the naturalistic.”

p. 54

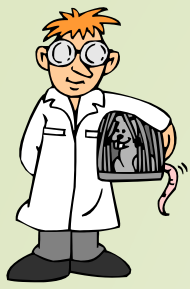




“Animal technicians, however, spend nearly all of their working day in the company of animals – cleaning their cages, restocking food and water; administering basic medical care, ... [W]hen animals are killed, animal technicians may well engage in specialized forms of memory work far more elaborate than that of lab researchers, erecting temporary or permanent memorials to favorite creatures.”

p. 140





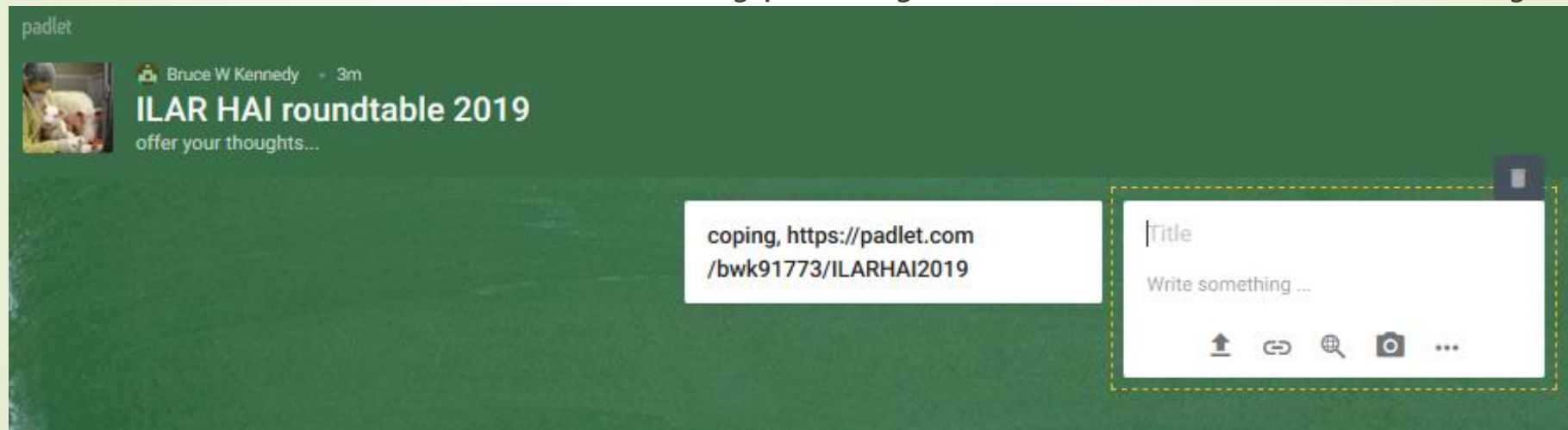
Thoughts about the ILAR HAI Roundtable

Email questions/comments to ilar@nas.edu.

or

Access the link: <https://padlet.com/bwk91773/ILARHAI2019>.

Double click on the blackboard. Type in your comment. It's anonymous.



Roundtable

This workshop will explore and characterize aspects of the complex scientific, ethical, and occupational health issues associated with human animal interactions in the biomedical research environment. The workshop will consider the full range of people who are involved in animal care and use in biomedical research settings, including research scientists, their staff and students, laboratory animal facilities managers, animal care staff, veterinarians and members IACUCs. This workshop will also consider possible metrics that, in combination with other contextual information, could shed light on potential workplace impacts (e.g., worker attendance, disability claims, injuries, complaints, and compliance records). Relevant tools, processes, and lessons learned from existing programs that are focused on the impacts of human-animal interactions in the biomedical research environment also will be explored. These discussions can help to inform a framework that could guide development of programs at other institutions.



<https://padlet.com/bwk91773/ILARHAI2019>

padlet



Bruce W Kennedy · 1m

ILAR HAI roundtable 2019

offer your thoughts...

coping, <https://padlet.com/bwk91773/ILARHAI2019>



Q&A, discussion, panelists

Can we lump animal researchers in their approach to HAI and animal research?

What's different for techs, PIs, trainers, etc.?

Why do vet techs come to – and leave – lab animal science?

Why do DVMs come to – and leave – lab animal science?

Could there be differences in CS and CF for various groups?

Is CF, burnout, coping, etc. worse/better/easier in companion animal care vs. lab animal?

What about necropsy techs, antibody producers, and other jobs in lab animal?

Enrichment of the enclosure – does it help in coping?

Do we choose animal models in order to cope while gaining knowledge in biological processes?

Do cagewashers and other minimal animal-exposed jobs still take pride in lab animal? Just a job?

Roundtable on “Human-Animal Interactions in the Research Environment: A Workshop”

Monday's Sessions

Human Animal Bond

Compassion in Biomedical Research

Workplace Impact

Challenges with Openness/Transparency
about Care for Research Animals

Tuesday's Sessions

Changing the Human-Animal
Dynamic in Research

Current Programs and Practices

Tools, Processes, and
Lessons Learned





Thanks to the Presenters

Bonnie Beaver, Texas A&M

Melanie Graham, U Minnesota

Brianna Skinner, FDA

Anneke Keizer, CopePLUS

Tracy Parker, Intuitive Surgical & AALAS

Mary Ann Vasbinder, GlaxoSmithKline

Elizabeth Clemmons, Texas Biomed Research Institute

Cindy Pekow, VA Puget Sound

Sabrina Brando, AnimalConcepts & U Stirling

Bruce W. Kennedy, Chapman University

Sally Thompson-Iritani, WA National Primate Research Center

J. Preston Van Hooser, U Washington

Taylor Bennett, National Assoc Biomed Research

Paul Locke, Johns Hopkins

Paula Clifford, Americans for Medical Progress

Ken Gordon, Northwestern Assoc Biomed Research

Patricia Turner, Charles River Laboratories

Cathy Schuppli, U British Columbia

Freddy de la Garza, BD

Holly Nguyen, U Washington

Vanessa Lee, Emory

Ann Turner, AALAS

Julie Mattison, NIH/NIA

Angela Alfonso, NIH/OD/ORS

Acknowledgements

Teresa Sylvina, Amanda Purcell, and Jeff Fishman, ILAR

Bob Dysko, RT chair

Members of the RT over the years

ILAR Council

Most importantly the animals
and the animal care providers!