

Personal and Cultural Factors in Human-Animal Interactions in the Laboratory

Cynthia Pekow, DVM, DACLAM, CPIA

Veterans Affairs Puget Sound Health Care System





Animals provide:

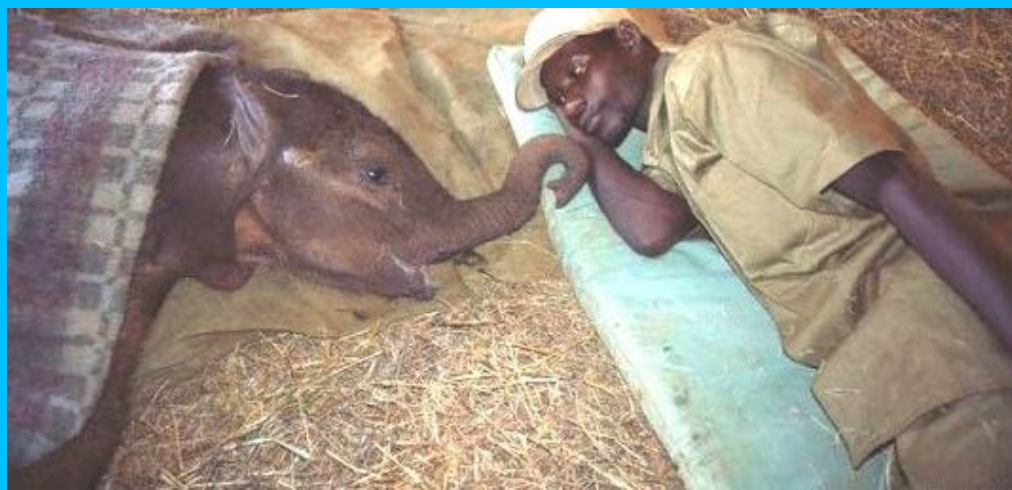
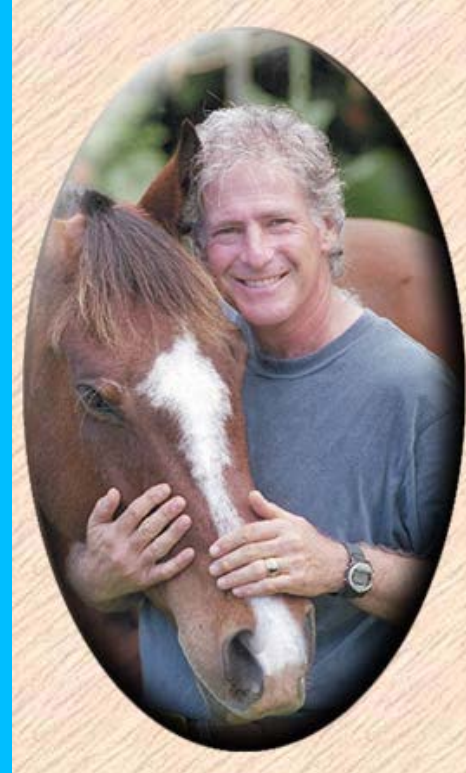


- **Companionship**
- **Protection**
- **Status**
- **Entertainment**
- **Sport**
- **Food & Fiber**
- **Assistance**
- **Labor**
- **Research subjects**

Human-animal relationships



- Views:
 - Cultural/religious
 - Upbringing
 - Experience







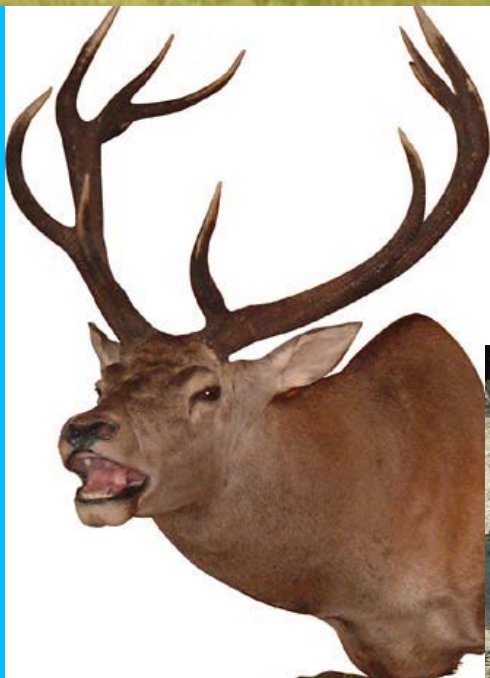




South Africa's Canned Lion Scandal

By Gareth Patterson

Foreword by



GUN DOG

THE MAGAZINE OF UPLAND BIRD AND WATERFOWL DOGS

DECEMBER/JANUARY, 1989-90

VOLUME 9, NUMBER 3, \$3.50

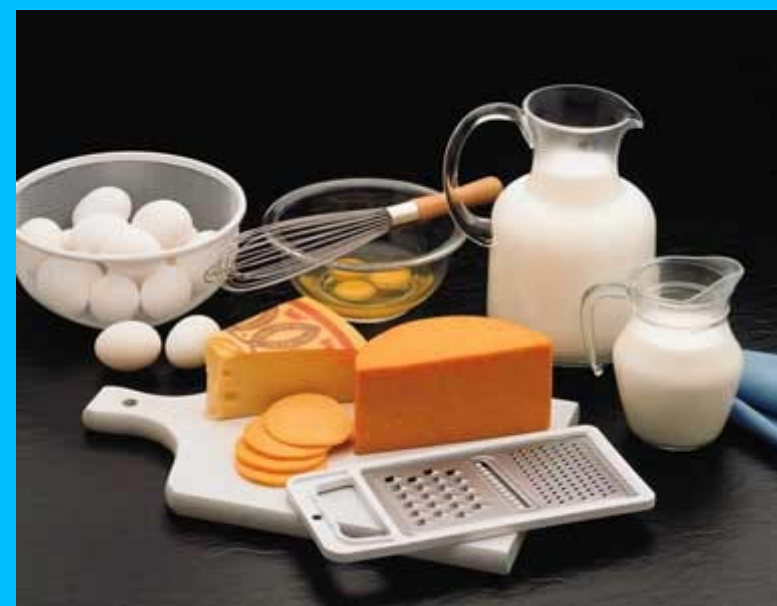
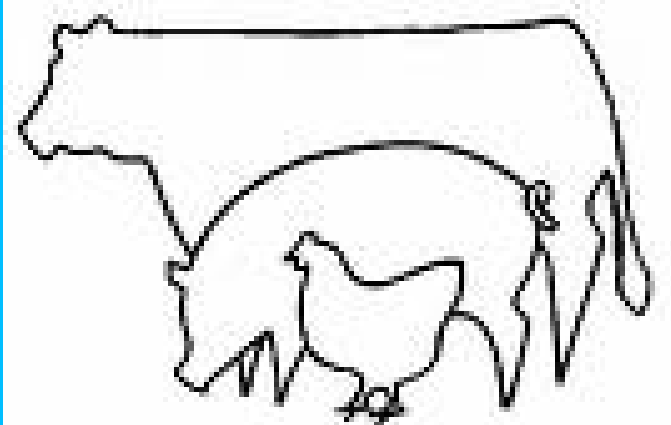


CURING HARD MOUTH • WHEN THE DOGS BITE
THE RAT-TAILED RETRIEVERS • REINFORCING STEADINESS



Falconry Hunting





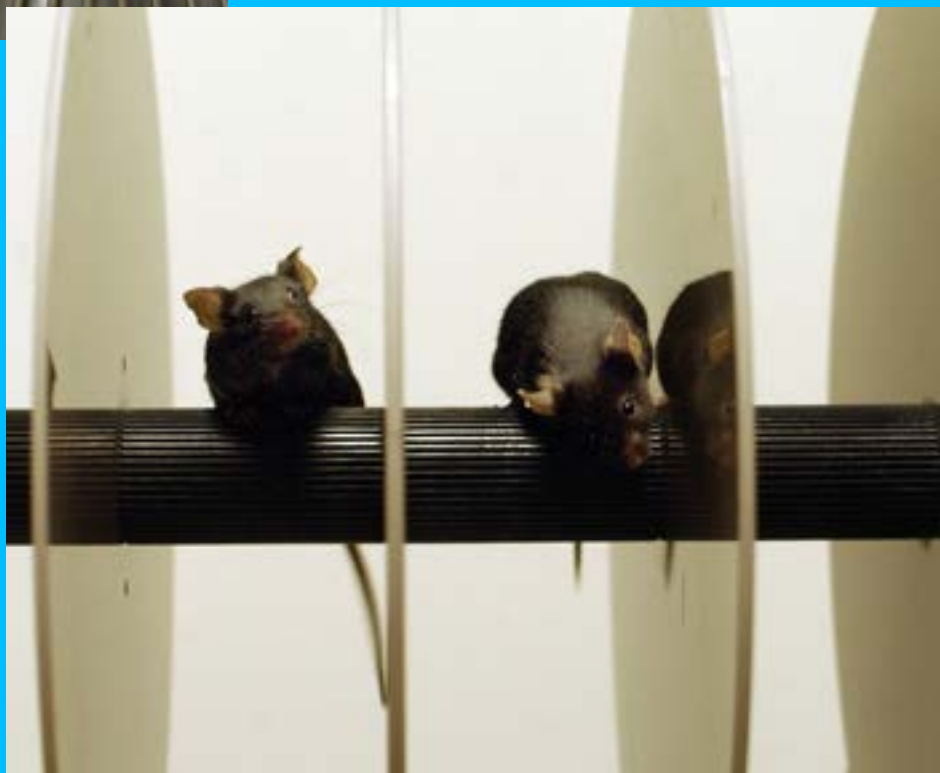












Who is working in the laboratory?



- Animal caregivers
- Veterinary staff members
- Supervisors/managers
- Researchers/technicians
- IACUC members
- Administrators
- Housekeepers
- Engineers
- Security personnel
- Supply staff

Reasons for choosing to work in a lab animal facility

- Affinity for animals
- Steady job, benefits
- Knew others working at the site
- Training provided, entry level



Human-Animal Relationships in the Laboratory

- Species
- Length of contact
- Types of interactions
- Culture of the facility or laboratory



Individual Evolution of Human-Animal Relationships in the Laboratory

- Rural, agricultural background
- Family experience with animals



Individual Evolution of Human-Animal Relationships in the Laboratory

- Health
- Parenthood
- Loss
- Pets
- Friendships
- Family
- Religious beliefs



Culture of Care

- Compassion* and respect for animals
 - and people
 - Concern to prevent distress, suffering
 - Staff enabled to improve care, well-being
 - Understanding purpose and value
 - Goes beyond what is legislated
-
- *Kindness, caring, willingness to help others

In Sum: Human-Animal Relations in the Laboratory

- Are influenced by
 - Cultural/religious background
 - Life experience
 - Up-bringing
 - Species of animals
- Relations may change
 - Influence of family, friends
 - Changes in health, relationships
- A good Culture of Care is inclusive
 - Promotes human and animal well-being

