



# MAFMC Recreational Management & Recreational Reform Initiative

Kiley Dancy and Julia Beaty  
*September 22, 2020*

# MAFMC Recreational Species



## Summer flounder

- ME-NC
- 8.67 mil directed trips in 2019
- 7.80 mil lb in 2019



## Scup

- ME-NC
- 2.70 mil directed trips in 2019
- 14.12 mil lb in 2019



## Black sea bass

- ME-NC (Northern stock)
- 1.21 mil directed trips in 2019
- 8.63 mil lb in 2019



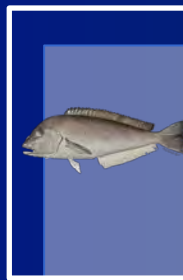
## Bluefish

- ME-FL
- 5.33 mil directed trips in 2019
- 15.56 mil lb in 2019



## Atlantic & Chub Mackerel

- ME-FL (Atl.); ME-NC (Chub)
- 854,000 directed trips in 2019
- 3.95 mil lb in 2019



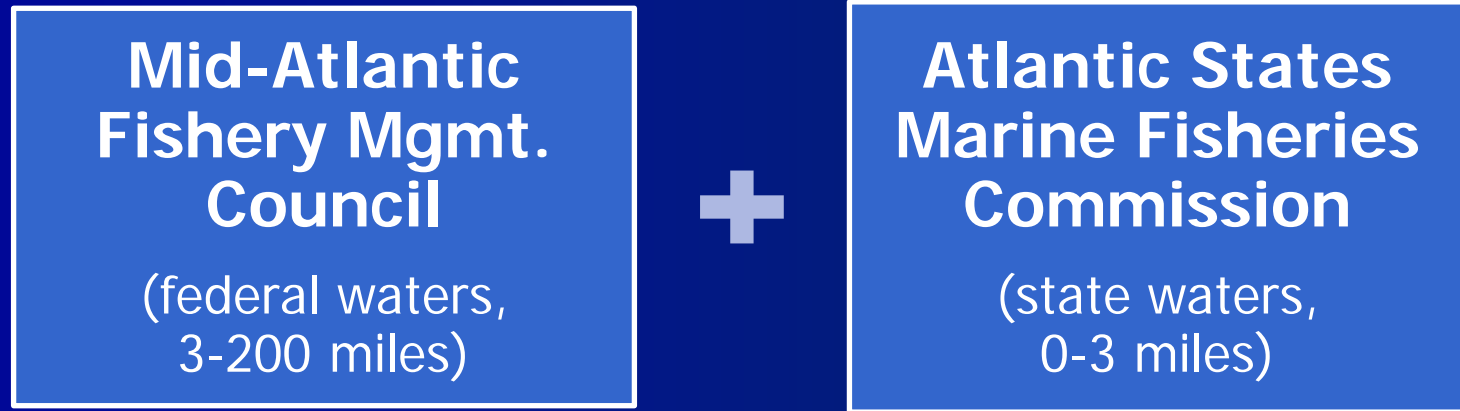
## Golden & Blueline Tilefish

- ME-VA
- 3,618 directed trips in 2019
- 157,609 lb in 2019

MRIP data as of 9/18/20  
Directed trip queried as primary target

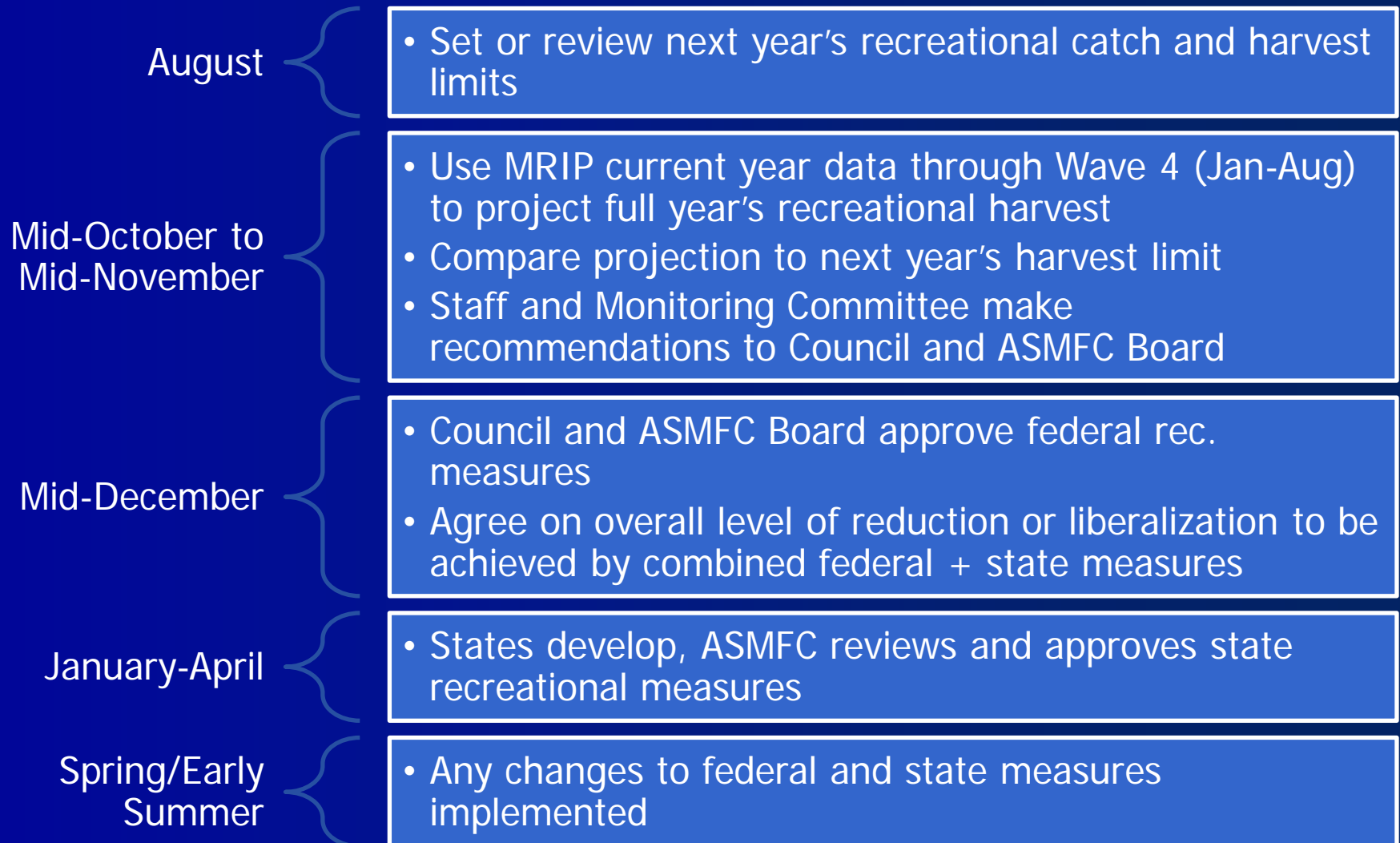
# Joint Management with ASMFC

- Summer flounder, scup, black sea bass, and bluefish are jointly managed by:




- Joint approval of annual catch limits
- Joint approval of most management strategies, though rec. measures (bag, size, season) often vary between state/federal waters

# Annual Recreational Measures Process



# Use of In-Season MRIP Data for Setting Next Year's Measures

	2019 waves 1-4 harvest (prelim.)	2018 waves 1-4 as % of annual	2019 projected annual harvest
ME	0	N/A	0
NH	0	N/A	0
MA	137,589	60.9%	226,033
RI	727,647	96.7%	752,614
CT	259,818	95.7%	271,581
NY	2,031,614	88.4%	2,297,832
NJ	2,374,330	92.7%	2,560,549
DE	199,324	80.9%	246,353
MD	90,151	76.6%	117,704
VA	372,180	74.2%	501,501
NC	39,464	47.1%	83,832
<b>Total</b>	<b>6,232,117</b>	<b>89.3%</b>	<b>7,057,999</b>

Adjust state projections as needed for regulatory changes, highly variable state/wave combinations, or extreme outlier estimates

# Use of In-Season MRIP Data for Setting Next Year's Measures

Summer flounder example: 2019 projection using waves 1-4	Projected 2019 harvest	2020 harvest limit	% under/over
	7.06 mil lb	7.60 mil lb	8% under (possible liberalization)

- Projected in pounds and numbers of fish using data through August (wave 4)
  - Wave 5 (Sept/Oct) important for these species; projections more uncertain without it
  - Sometimes can update with wave 5 data right before December Council/Board meeting (uncommon)
- Current & recent year MRIP data analyzed to adjust measures as needed at federal and/or state level

# Removal of Rec. In-Season Closure Authority (2013)

- Recreational Accountability Measures (AMs) modified in 2013 for all MAFMC rec species via omnibus amendment
  - <https://www.mafmc.org/actions/omnibus-recreational>
- Removed previously held authority of NMFS Regional Administrator to close federal recreational fishery in-season if rec. harvest projected to exceed harvest limit

# Removal of Rec. In-Season Closure Authority (2013)

- Challenges with rec. in-season closure:
  - Based on uncertain projections using preliminary partial year data
  - Disproportionate negative impact on states with federal waters fisheries occurring later in the year
  - Difficult to communicate closures to rec. community quickly & efficiently
- Remaining AMs include various options for post-season adjustments
- Currently, no in-season management in federal waters; rarely in state waters





# Recreational Reform Initiative



# Recreational Reform Goal/Vision

- **Stability** in rec. mgmt. measures (bag/size/season)
- **Flexibility** in the mgmt. process
- **Accessibility** aligned with availability/stock status



# Rec. Reform Initiative Potential Topics

- 1) Better incorporate MRIP uncertainty into mgmt.
- 2) Develop guidelines for maintaining status quo measures
- 3) Develop a process for setting multi-year measures
- 4) Improvements to process used to make changes to state and federal mgmt. measures
- 5) Timing of federal waters measures recommendation
- 6) Recreational Sector Separation
- 7) Recreational catch accounting
- 8) Recreational accountability
- 9) Harvest control rule

## Recreational Reform Initiative Potential Topics

### 1: Better incorporate MRIP uncertainty into mgmt.

- Adopt a standardized process for **IDing and smoothing outliers** - for both high and low outliers.
- Use an **“envelope of uncertainty” approach** for determining if changes to measures are needed.
  - Define a range above and below the projected harvest estimate (e.g., based on PSE). If RHL falls within that range, no changes would be made to measures.
- Evaluate the **pros and cons of using preliminary current year data.**

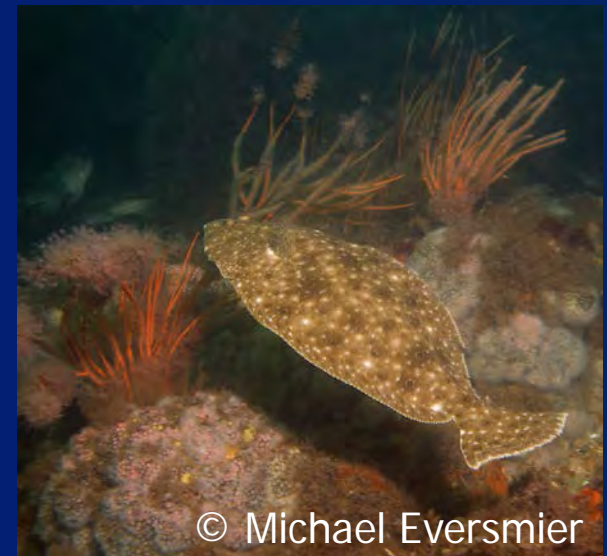
## 2: Develop guidelines for maintaining status quo measures

- Develop a process for considering harvest and multiple stock status metrics (biomass, fishing mortality, recruitment) when determining if measures should remain unchanged.



### 3: Develop a process for setting multi-year measures

- **Set measures for 2 years at a time** with a commitment to making no changes in the interim year.
- Don't react to new data that would otherwise allow for liberalizations or require restrictions in the interim year.
- Synchronize changes with stock assessment updates.
- Further consideration of MSA requirements for annual ACL evaluation needed.



© Michael Eversmier



## **4: Improvements to process used to make changes to state and federal mgmt. measures**

- Could include topics such as:
  - State by state vs. regional measures
  - Conservation equivalency process (state and federal)
  - Guidelines for using MRIP data at granular levels
  - Considerations for using data other than MRIP



## Recreational Reform Initiative Potential Topics

### 5: Timing of federal waters measures recommendation





## **#6: Recreational Sector Separation**

- Should the for-hire sector be managed separately from the private/rental and shore modes?
  - Separate allocations of catch/landings limits?
  - Separate management measures without separate allocations?
  - Data considerations: higher PSEs when MRIP data split by mode, only federally permitted vessels submit VTRs.
- Stakeholder interest (e.g., perception that for-hire MRIP data more certain than private/shore).

## **#7: Recreational catch accounting**

- Stakeholder suggestions: private angler reporting, manage harvest with tags, tournament reporting, enhanced VTR reporting.

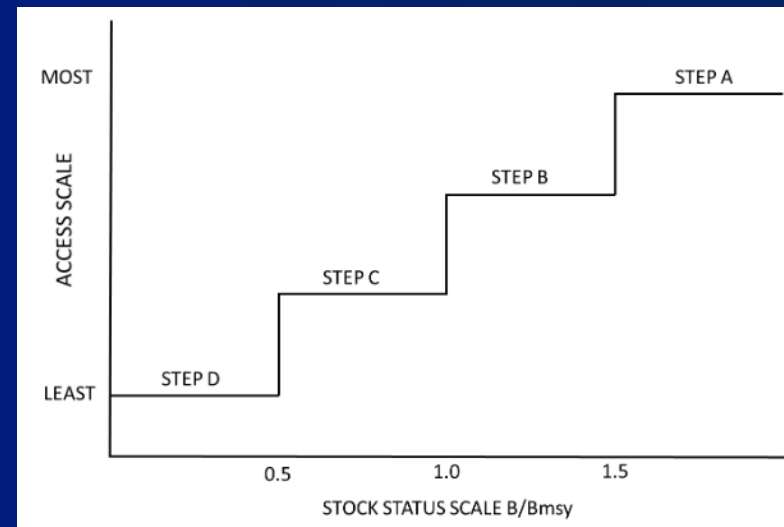
**#8: Recreational accountability**

- Stakeholder suggestions: more frequent overage paybacks, in-season closures.
- Would represent a reversal of changes made through Amendment 19.

# Recreational Reform Initiative Potential Topics

## #9: Harvest Control Rule

- Proposed by 6 recreational organizations.
- Conceptual idea:
  - Range of pre-defined mgmt. measures.
  - Step used in any given year based on biomass.
  - Upper and lower bounds informed by stakeholder input.
    - Step A: most liberal set of measures preferred by anglers when biomass is high.
    - Step B: most restrictive set of measures that could be tolerated without major loss of businesses.



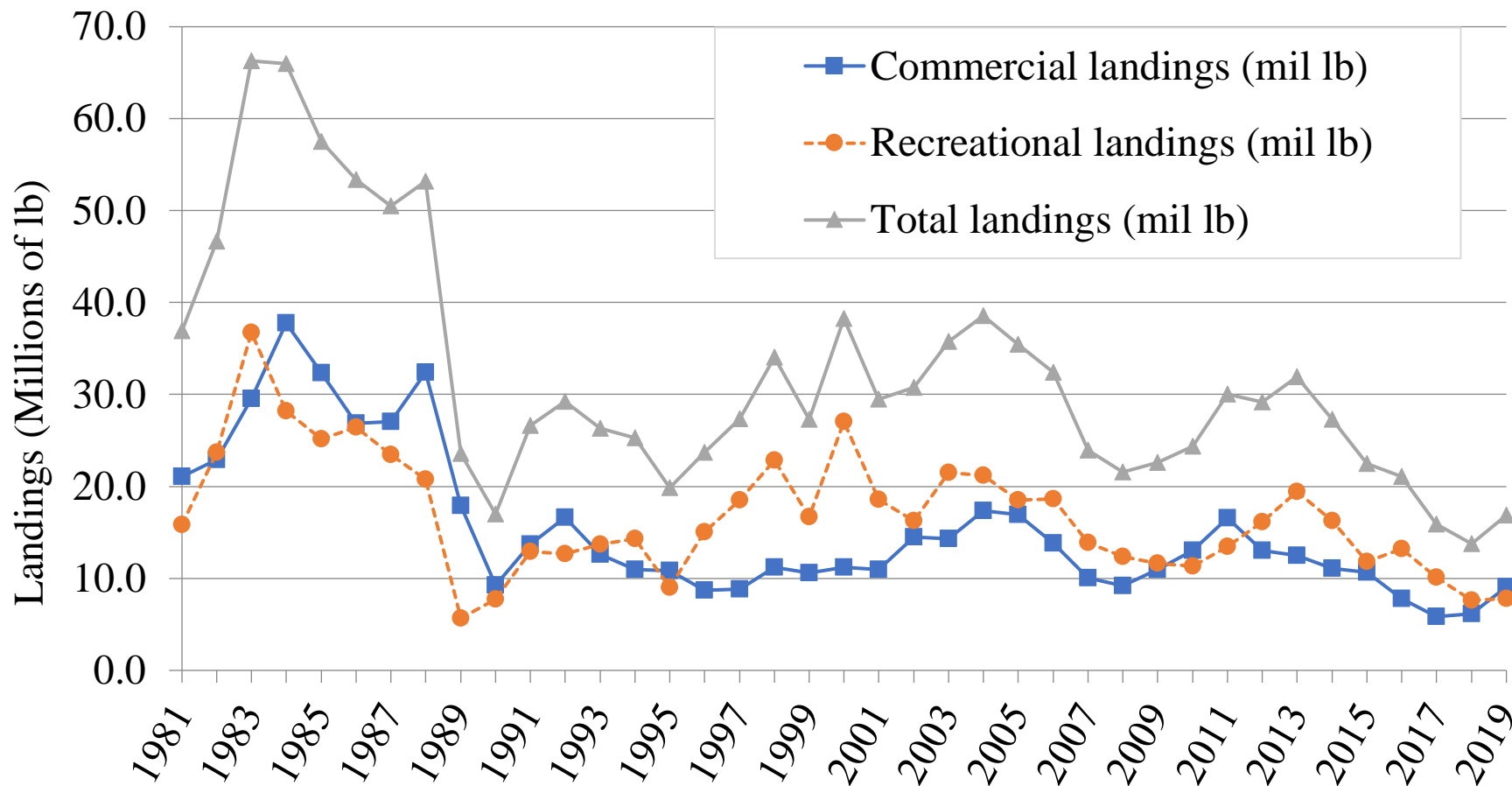
# Recreational Reform Initiative

## **Next steps**

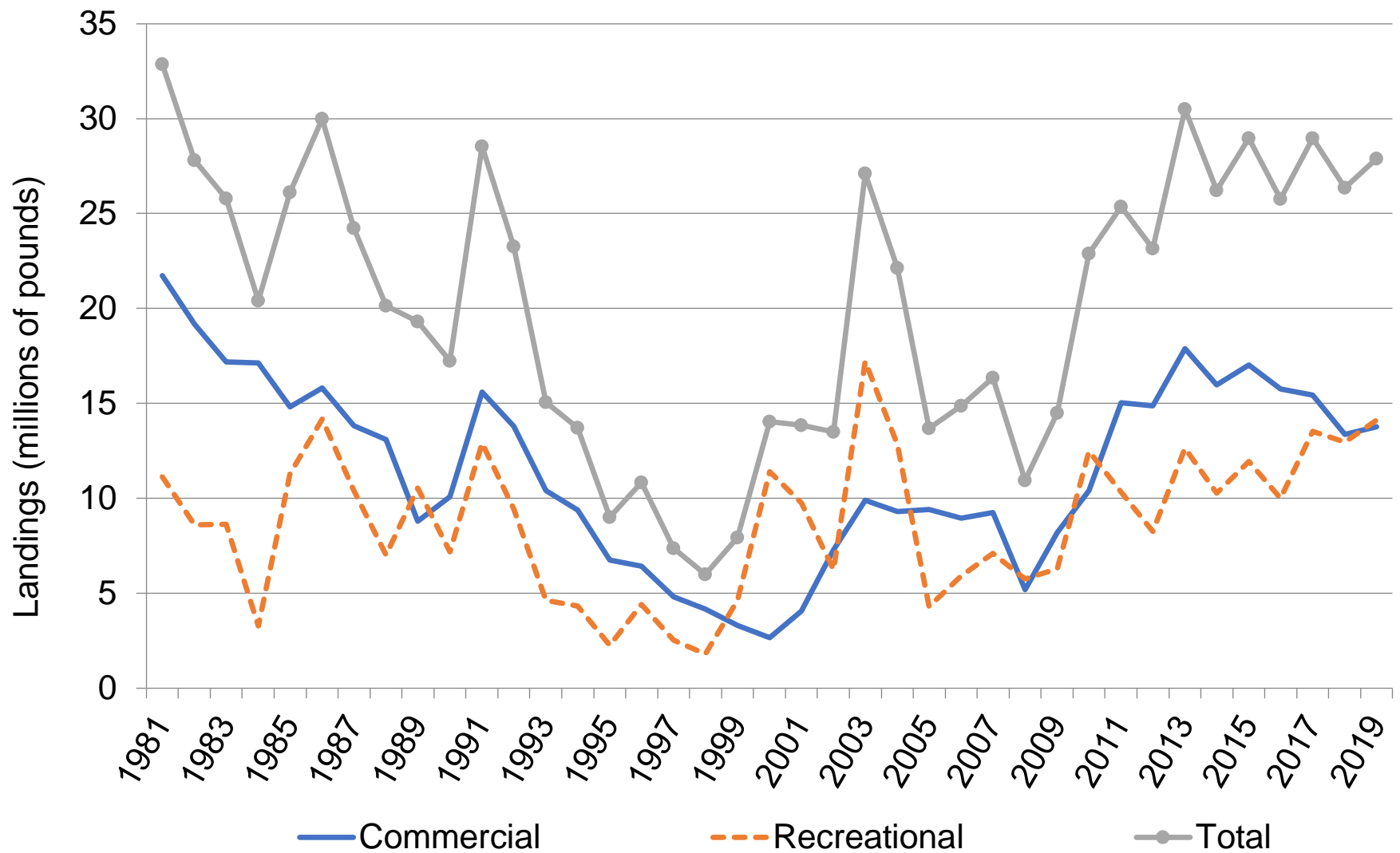
- Prioritize topics for further development.
- Initiate management action (FMP framework/addendum and/or amendment).
- Further develop and analyze priority topics.

# BACKUP SLIDES

# Summer Flounder



# Scup





# Black Sea Bass

