



U.S. Department of the Interior
Office of Planning and Performance Management

Performance and Evidence at the Department of the Interior

Presentation for the National Academies study on Assessment and Advancement of Science in the Bureau of Ocean Energy Management's Environmental Studies Program

Andy Webb Andrew_webb@ios.doi.gov

April 26, 2021

Introduction



Office of the Secretary, Assistant Secretary for Policy, Management and Budget - **Office of Planning and Performance Management**
Performance, Evidence-Building, Enterprise Risk, and Program and Project Management

Bureau of Indian Affairs

Bureau of Indian Education

Bureau of Land Management

Bureau of Ocean Energy Management

Bureau of Reclamation

Bureau of Safety and Environmental Enforcement

Bureau of Trust Funds Administration

National Park Service

Office of Surface Mining Reclamation and Enforcement

U.S. Fish and Wildlife Service

U.S. Geological Survey



— BUREAU OF —
RECLAMATION

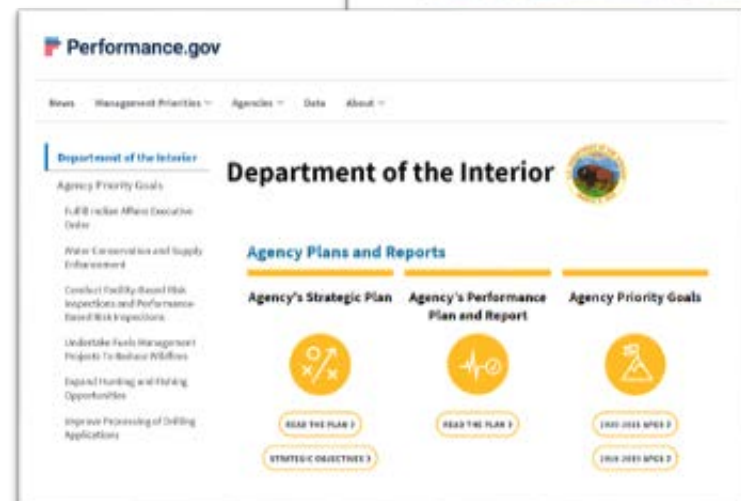
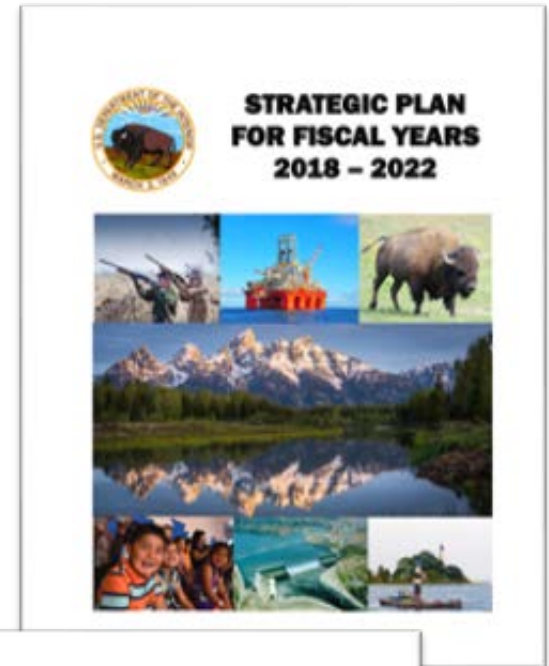


Performance and Evidence Legislation and OMB Guidance

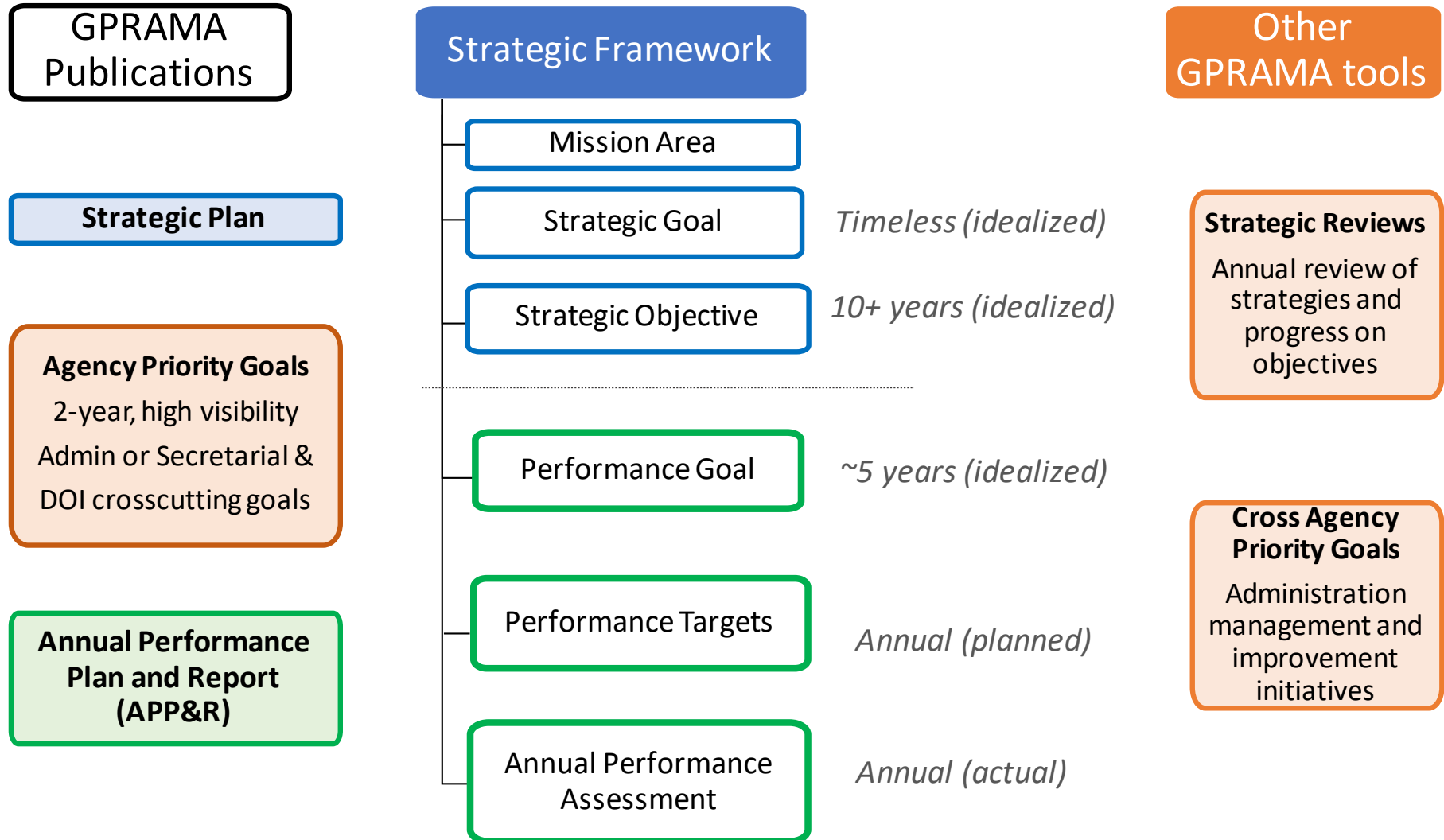
- Government Performance and Results Act (GPRA) 1993
- GPRA Modernization Act (GPRAMA) 2010
- Foundations for Evidence-Based Policymaking Act (Evidence Act) 2019
- OMB Circular A-11, Part 6 Section 200: The Federal Performance Framework
 - OMB Memo [M-21-22](#) - Reinstate A-11, empower PIOs in performance management, and joint Agency Priority Goals

GPRAMA Reporting Requirements

- Strategic Plan
 - Learning Agenda (*starting in FY 2022*)
 - Capacity Assessment (*starting in FY 2022*)
- Annual Performance Plan and Report (APP&R)
 - Annual Evaluation Plan (*starting in FY 2022*)
 - Strategic Reviews
- Agency Priority Goals (2 years)
- Cross-Agency Priority Goals
- Other Reports



Performance Framework



Building Performance Goals

Performance Goals Include: 1) A outcome-focused goal statement, 2) an indicator of performance, 3) target, and a 4) timeframe *[OMBA-11, Part 6]*

Traditional Approach

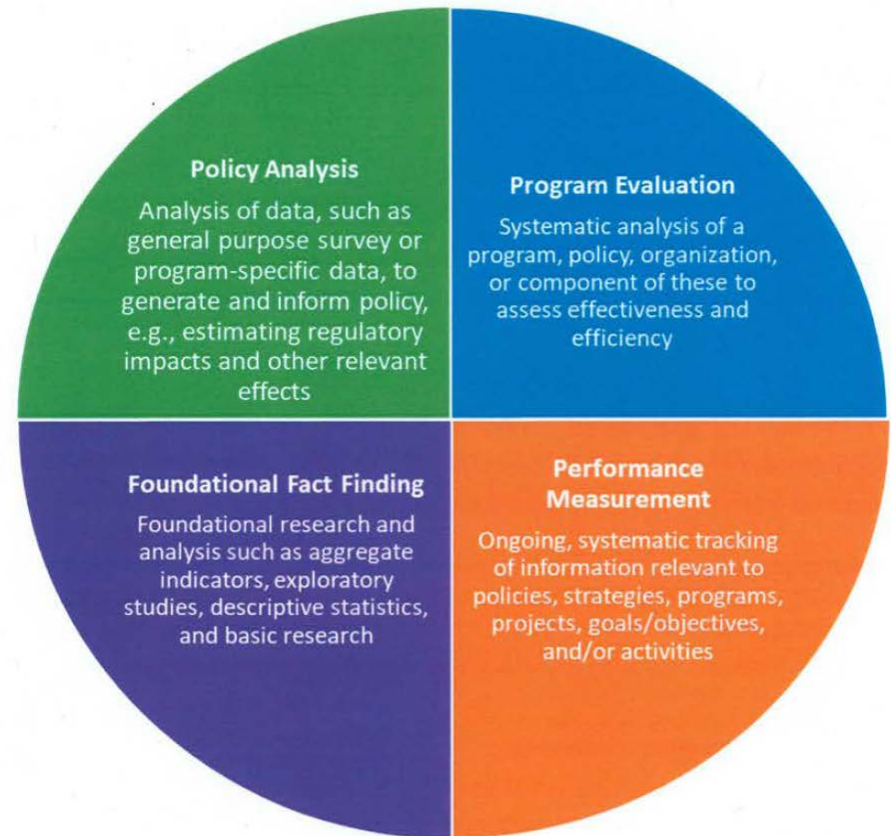


New Approach



Evidence Framework

- Evidence for policy and decision-making to improve **program** efficiency and effectiveness.
- What evidence do we have and the strength of the evidence to indicate programs are efficient and effective to achieve goals and objectives?
- How will we build evidence about the programs' efficiency or effectiveness?



Evidence Reporting Tools

Use evidence for decision making and when you need to produce evidence for decision making

- Learning Agenda (*quadrennial*)
 - What evidence do we have to inform programs to accomplish goals and objectives?
 - What do we need to know about programs to inform decisions to accomplish goals and objectives?
 - How will we learn it (build-evidence)?
- Capacity Assessment (*quadrennial*)
 - What is our ability to evaluate and produce evidence about programs?
 - How will we improve capacity to produce evidence about programs?
- Annual Evaluation Plan (*annual*)
 - What are our planned “significant” evaluations in the upcoming budget year regarding program efficiency or effectiveness?

Performance, Risk, and Evidence

BOEM's contribution to the Strategic Plan with programs that support strategic goals and objectives

Goals and Objectives

- **What is the future vision for success?**
 - What performance goals would show outcome focused performance?
- **What are the risks (likelihood and impact) to achieving our goals?**
 - How will each risk be treated?

Program efficiency and effectiveness

- **What evidence do we have to indicate a program's effectiveness and efficiency?**
 - What do we want to learn and how will we learn it?
 - What is our capacity to learn and how will we grow the capacity?

Performance and Evidence

BOEM's Environmental Studies Program

BOEM's Environmental Studies Program (ESP) is mandated by Section 20 of the Outer Continental Shelf Lands Act (OCSLA) to conduct studies that will provide the information needed to assess and manage impacts on the human, marine, and coastal environments from offshore energy and marine mineral development.

[*FY 2020 Environmental Studies Strategic Framework*](#)

Program Performance

BOEM's ESP will conduct environmental studies to meet outcome targets to support the goals and objectives in the DOI Strategic Plan.

- BOEM will identify performance goals and targets to support DOI objectives

Evidence-Building

BOEM's ESP will assess and evaluate its programs to build evidence on the efficiency and effectiveness of programs to achieve performance goals.

- BOEM will identify learning needs to support DOI objectives

Questions



Office of Planning and Performance Management

“Learning from the Past, Working in the Present, Influencing the Future”