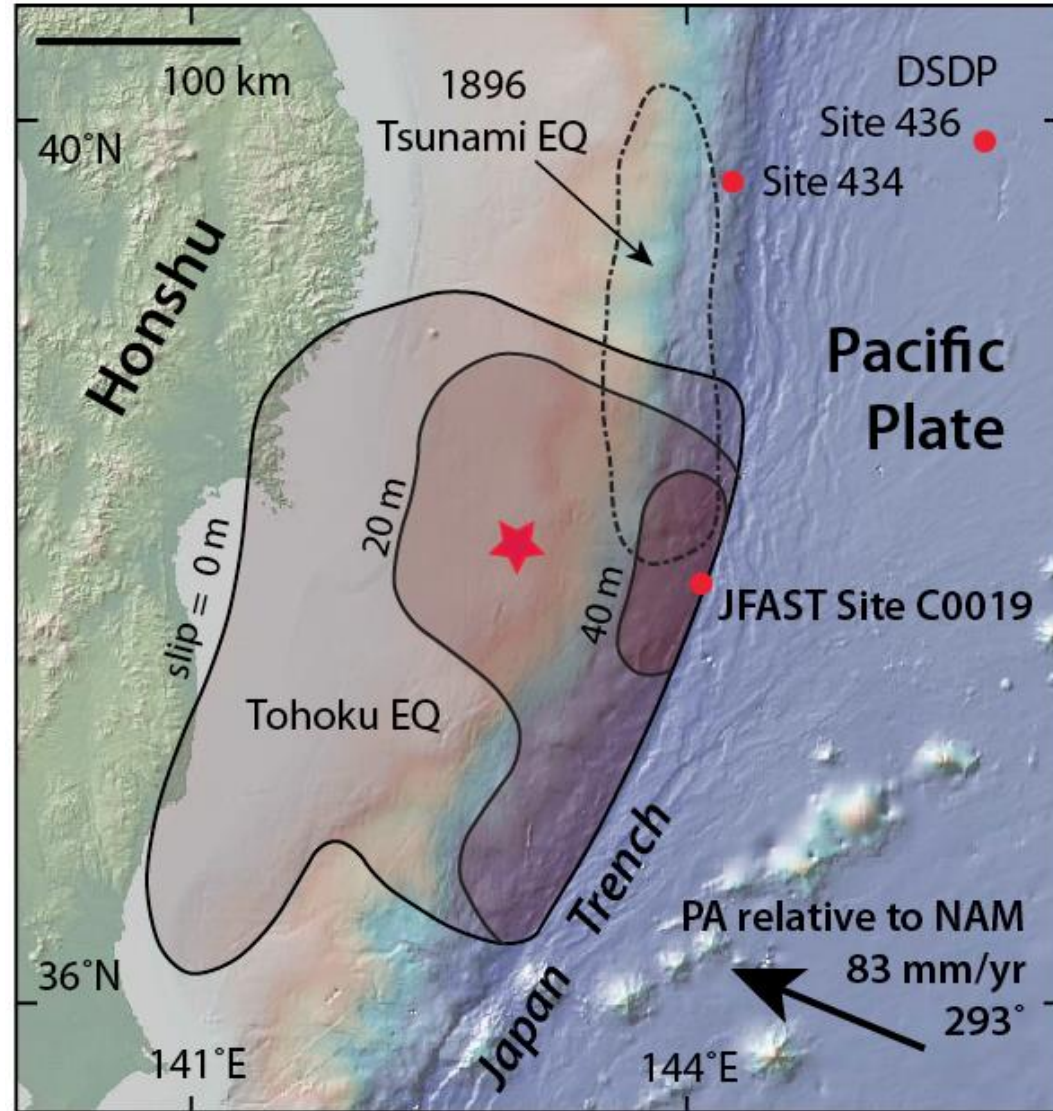
A satellite-style map of Japan and the surrounding Pacific Ocean. The Japanese archipelago is visible on the left, with the main islands of Hokkaido, Honshu, and Shikoku. A prominent dark blue line representing a tectonic plate boundary runs along the coast of Honshu. A red dot is placed on this boundary, indicating the location of the 2011 Tohoku-Oki earthquake. The text 'TAKING THE TEMPERATURE OF THE 2011 M<sub>w</sub> 9.0 TOHOKU-OKI EARTHQUAKE FAULT' is overlaid on the right side of the map in white, bold, sans-serif font.

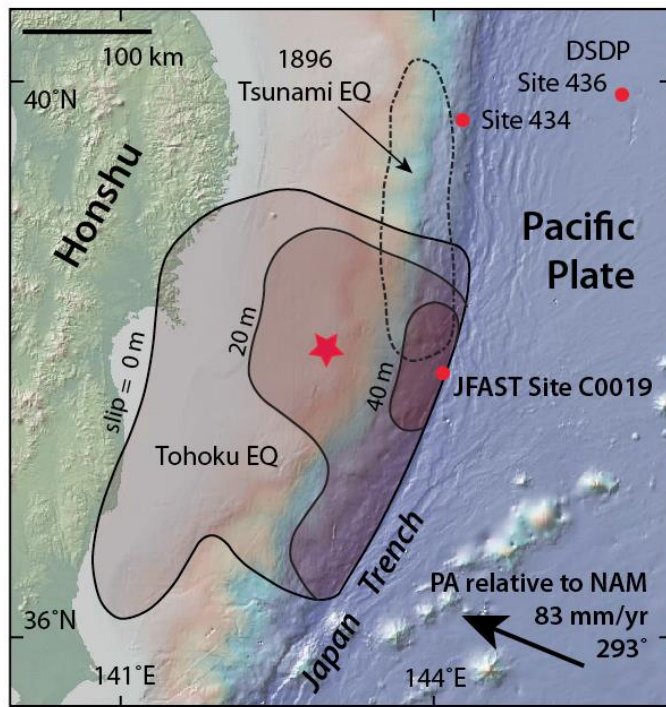
# TAKING THE TEMPERATURE OF THE 2011 M<sub>w</sub> 9.0 TOHOKU-OKI EARTHQUAKE FAULT

Patrick M. Fulton  
Cornell University  
[pfulton@cornell.edu](mailto:pfulton@cornell.edu)

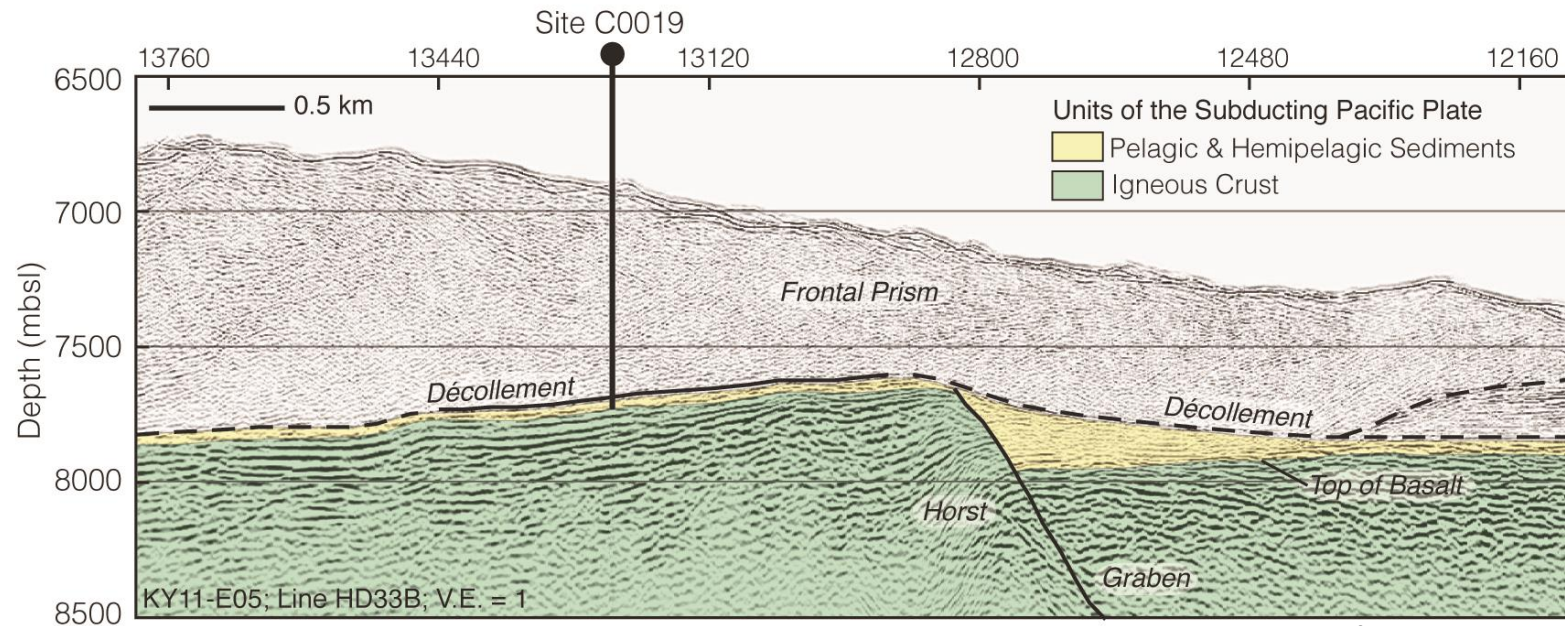




Chester et al. , *Science* 2013

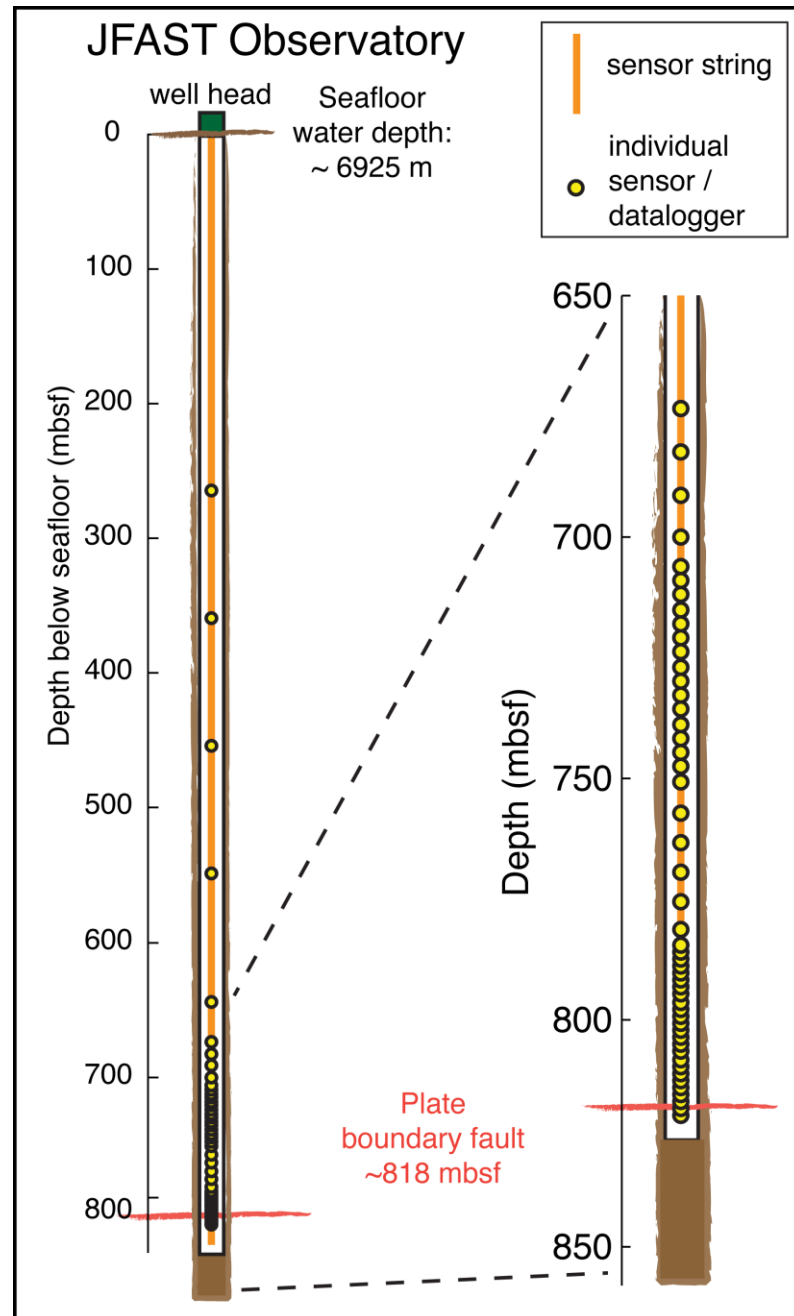


# JFAST: The Japan Trench Fast Drilling Project



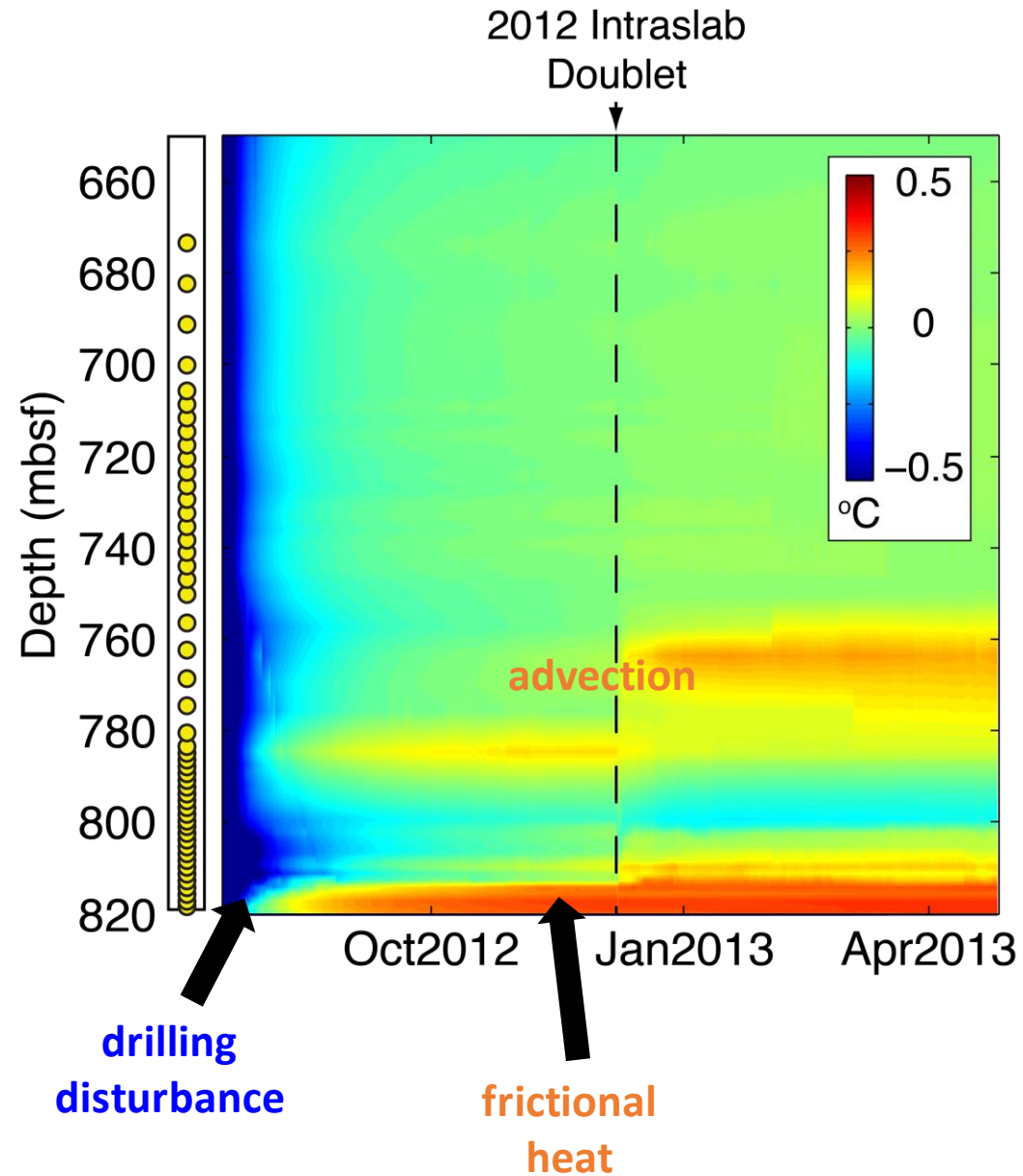
Chester et al., *Science* 2013





Fulton et al., *Science* 2013

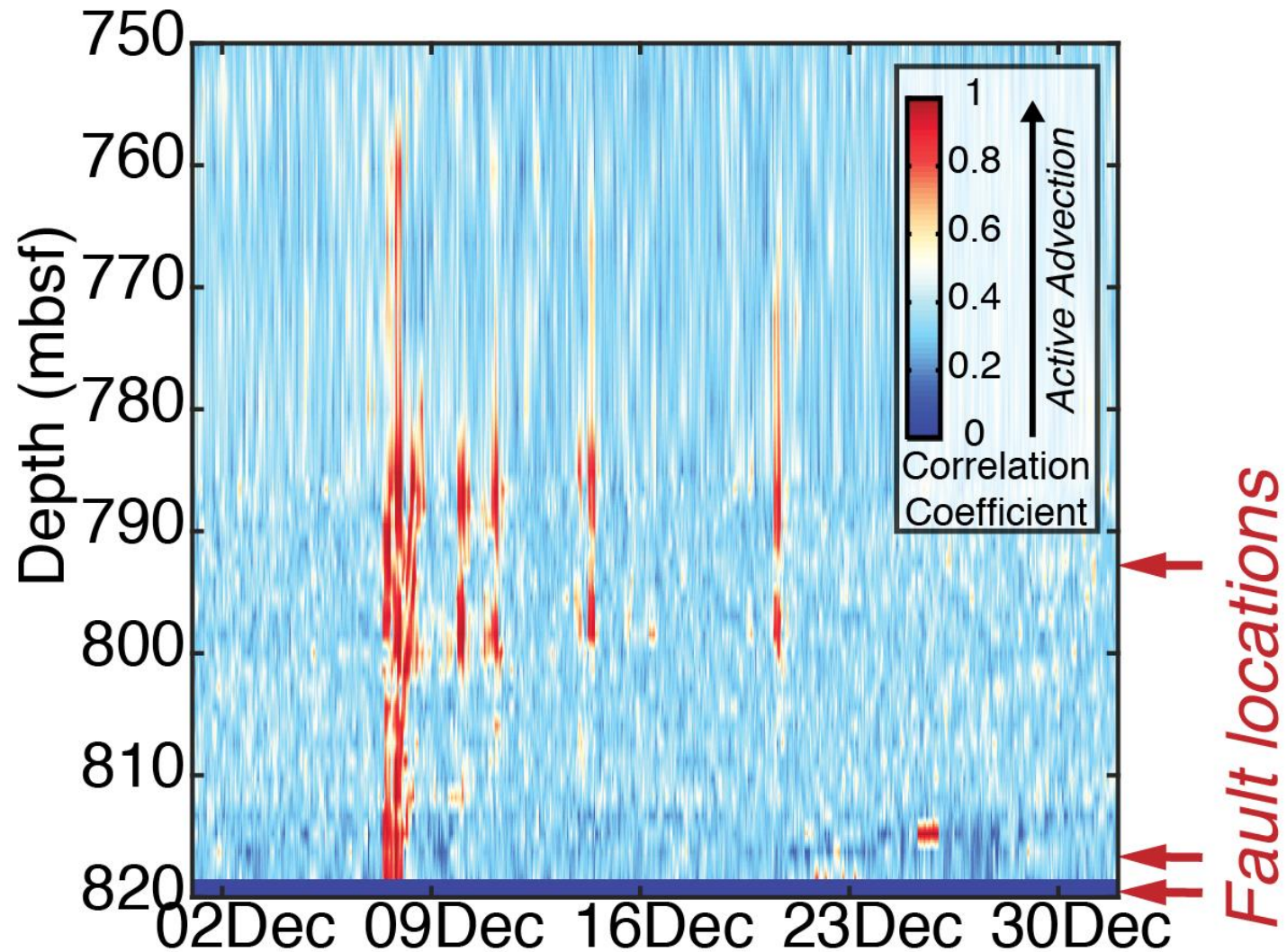
# Residual temperature (geotherm removed)



Fulton et al., *Science* 2013  
Fulton & Brodsky, *Geology* 2016

# Observatories reveal the hydrologic response to distant earthquakes: transient fluid pulses in fault damage zone

Correlation coefficient shows where and when advection is occurring



6-hour overlapping windows

Fulton & Brodsky, *Geology*, 2016