

Pacific Research on Island
Solutions for Adaptation

The Pacific RISA Program

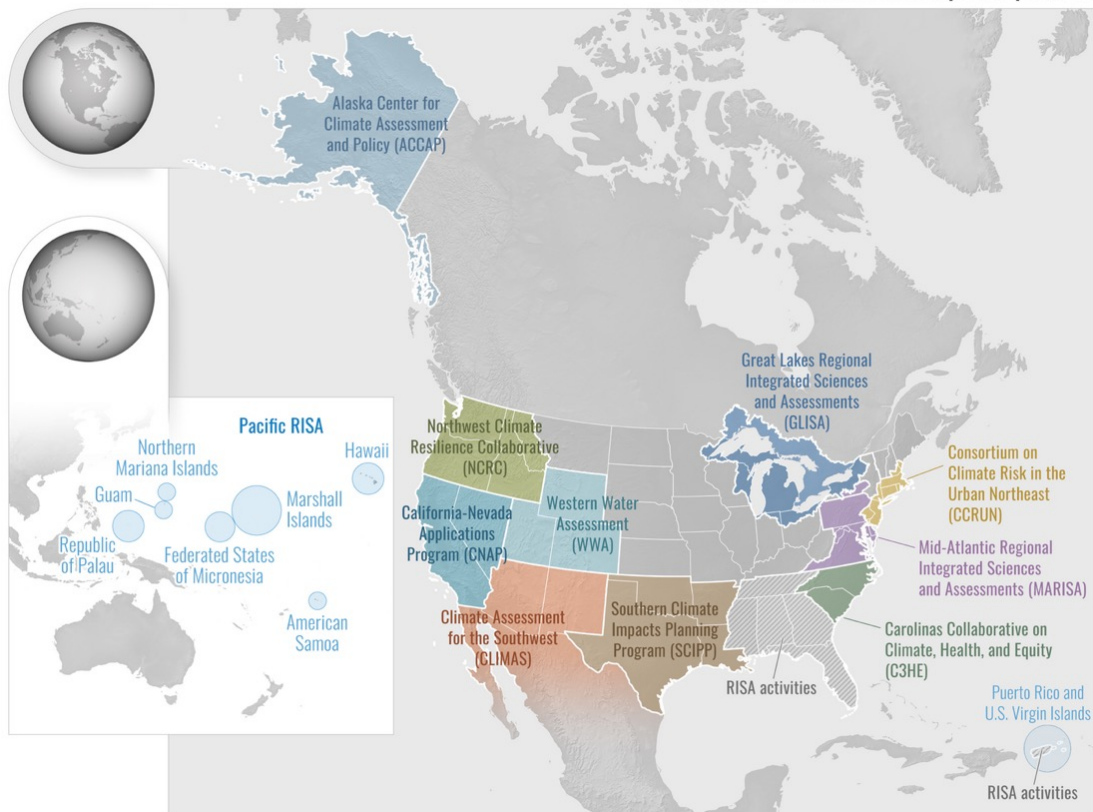
Reflections on 13 years of
knowledge co-production and
sustained engagement

Kirsten L.L. Oleson, PhD

Victoria Keener, Laura Brewington, Zena Grecni

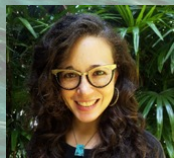
Presentation to NASEM Decadal Survey of
Ocean Sciences for NSF Committee
October 24, 2023

Currently funded RISAs & special projects



Who we are & What we do

- One of 11 national NOAA CAP/RISA teams
- Use-inspired climate adaptation science
- Island-based, globally relevant
- A trusted source of regional climate information
- Fully funded by NOAA since 2010



Victoria Keener
Co-Lead
ASU/EWC



Laura Brewington
Co-Lead
ASU/EWC

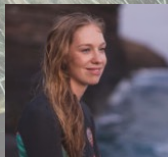
The Pacific RISA Core & PI Team



Zena Grecni
**PI, Sustained
Assessment**
ASU



Krista Jaspers
Comms
ASU



Paula Moehlenkamp
Proj Specialist
EWC



Chelsea Bryson
Proj Specialist
EWC



Mari Ching
Prog Coord
ASU



John Marra
PI
NOAA NCEI



Maxine Burkett
PI
U Hawai'i Law



Abby Frazier
PI
Clark U



Tom Giambelluca
PI
U Hawai'i WRRC



Kirsten Oleson
PI
U Hawai'i NREM



Chris Shuler
PI
U Hawai'i
WRRC



Matthew Widlansky
PI
U Hawai'i Sea L Ctr

Pacific RISA Research



ASU Julie Ann Wrigley
Global Futures Laboratory
Arizona State University

WATER RESOURCES AND POLICY



CLIMATE, HEALTH, AND MIGRATION

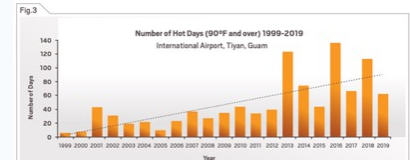


ECOSYSTEMS AND BIODIVERSITY



REGIONAL CLIMATE ASSESSMENTS

pirca
PACIFIC ISLANDS REGIONAL CLIMATE ASSESSMENT



pacificrisa.org

Pacific RISA Research



ASU Julie Ann Wrigley
Global Futures Laboratory
Arizona State University

COMPOUND EXTREMES AND VULNERABILITY



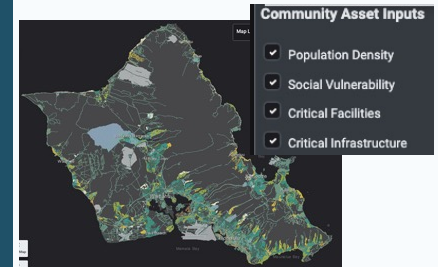
COASTAL HAZARDS ASSESSMENTS



NATURAL CAPITAL & NATURE-BASED SOLUTIONS



INTEGRATED VULNERABILITY & EXPOSURE



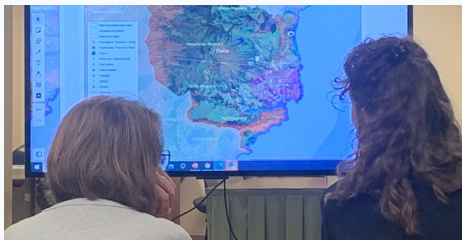
What binds the research to social change



EAST-WEST CENTER

ASU Julie Ann Wrigley
Global Futures Laboratory
Arizona State University

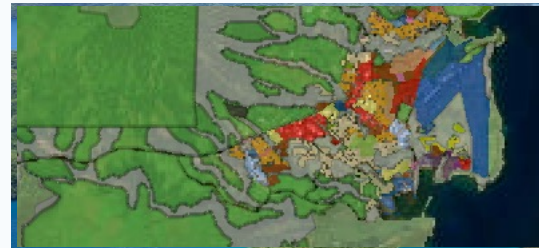
ENGAGED
SCIENTISTS



STABLE
RELATIONSHIPS WITH
DECISION-MAKERS



MEANINGFUL
SCIENCE-INFORMED
POLICY OUTCOMES



pacificrisa.org

Co-production

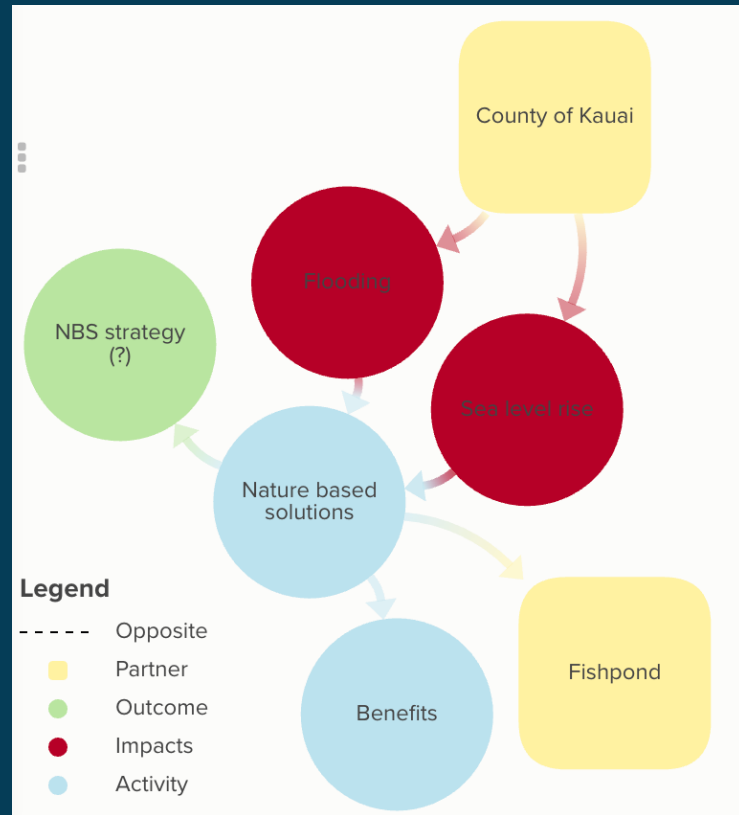


EAST-WEST CENTER

ASU Julie Ann Wrigley
Global Futures Laboratory
Arizona State University

Involving project partners who are the ultimate users of information in all aspects of research design, development, and outputs

One co-production journey



Policy outcomes



I MINA'TRENTAI SAIS NA LIHESLATURAN GUÅHAN
2021 (FIRST) Regular Session

Resolution No. 55-36 (COR)
As amended on the Floor.

Introduced by:

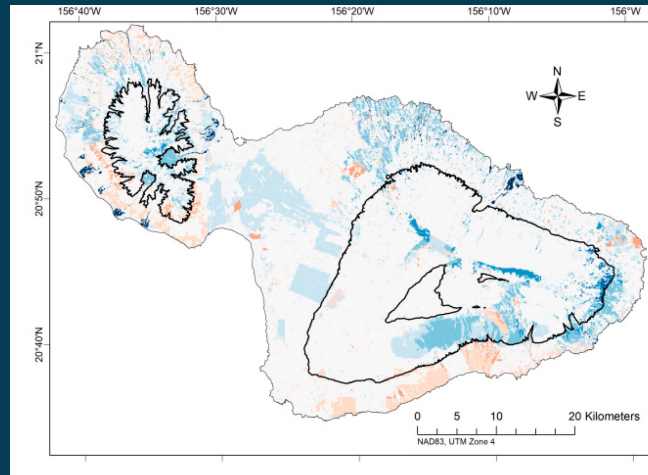
Sabina Flores Perez
Theresa M. Terlaje
Telena Cruz Nelson
Clynton E. Ridgell
Jose "Pedro" Terlaje
Tina Rose Mufia Barnes
Telo T. Tallaque
V. Anthony Ada
Frank Blas Jr.
Joanne Brown
Christopher M. Dueñas
James C. Moylan
Joe S. San Agustin
Amanda L. Shelton
Mary Camacho Torres

Relative to reaffirming Guam's human right to safe and clean drinking water in observance of "World Water Day 2021" and recognizing the importance of protecting the Northern Guam Lens Aquifer and its precious water resources and ensuring the health of Guam's people.

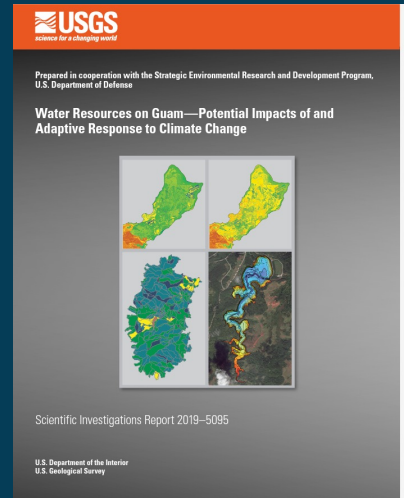
- 1 BE IT RESOLVED BY I MINA'TRENTAI SAIS NA LIHESLATURAN
- 2 GUÅHAN:
- 3 WHEREAS, the United Nations General Assembly, through Resolution
- 4 A/RES/64/292, declared safe and clean drinking water and sanitation as a human right
- 5 essential to the full enjoyment of life and all other human rights; and, the United Nations



COUNTY OF MAUI
DEPARTMENT OF WATER SUPPLY
WATER RESOURCES & PLANNING



PEER TO PEER
EXCHANGE





Co-production & engagement: Tending a garden

- Patience, persistence, presence
- Genuine relationships
- Team champions on diverse issues

Attributes that led to impacts

- Sustained interactions
 - Non-extractive co-development
 - Transdisciplinary collaboration
 - Sensitive to external context
- Flexible and nimble grant
 - Creative thinking
 - Unconventional partnerships
 - Responsive to emerging factors
- Value applied science, non-peer reviewed outputs
 - Testimony, community engagement, indicator dashboards, decision support tools





Co-production & engagement for ocean solutions

- Broad-ranging transdisciplinary collaboration
- Highly international
- Long-term engagement from inception to implementation

5 ideas for NSF

1. Meaningful & sustained engagement
2. Flexible & nimble grants
3. Applied science partners & non-academic PIs
4. Detailed pathways to broader impacts
5. Broad evaluation



Mahalo

Kirsten L.L. Oleson

Professor of Ecological Economics

Department of Natural Resources & Environmental Management

University of Hawai'i at Mānoa

koleson@hawaii.edu

