

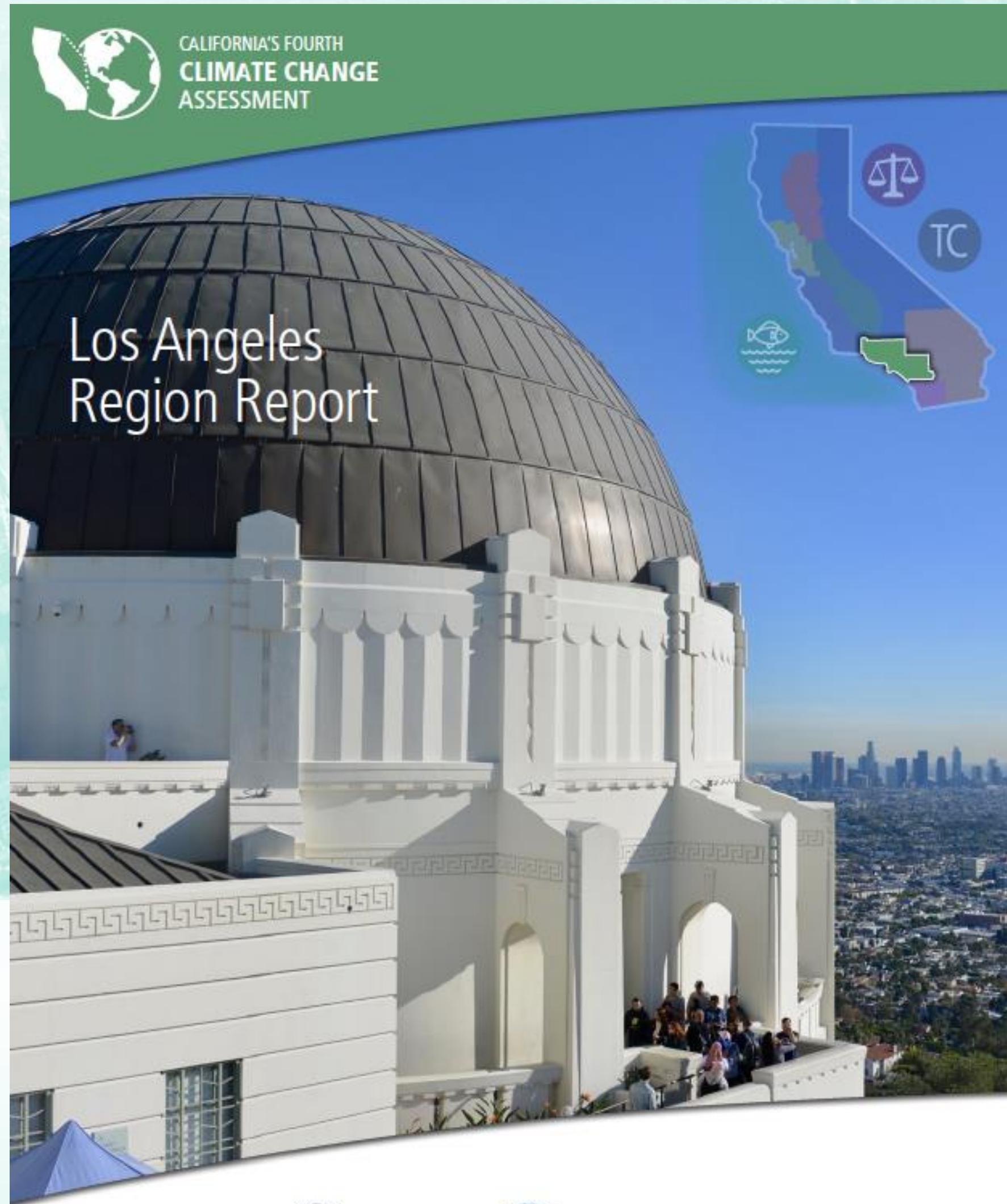
State of California ■ 4th Climate Change Assessment

A View from Los Angeles

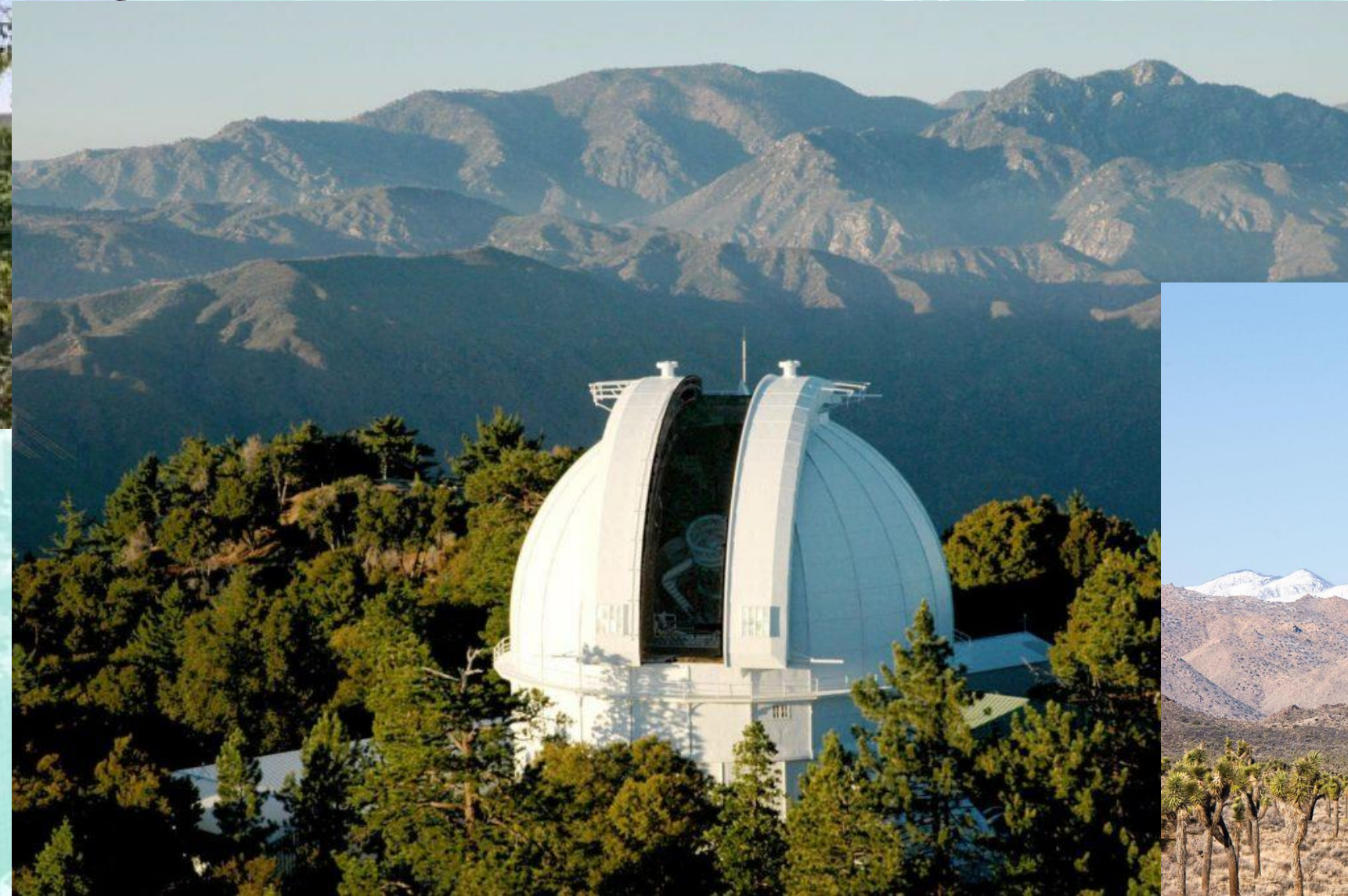
National Academy of Sciences ■ August 14, 2018



Los Angeles Region Report



Los Angeles is Different



Los Angeles Regional Collaborative for Climate Action and Sustainability



Aerial night view of Los Angeles skyline with icons for innovation, transit, water, health, and nature.

A Greater LA

CLIMATE ACTION FRAMEWORK



Coordinator



Local Government Commission
Leaders for Livable Communities

Ex-Officio



Affiliate



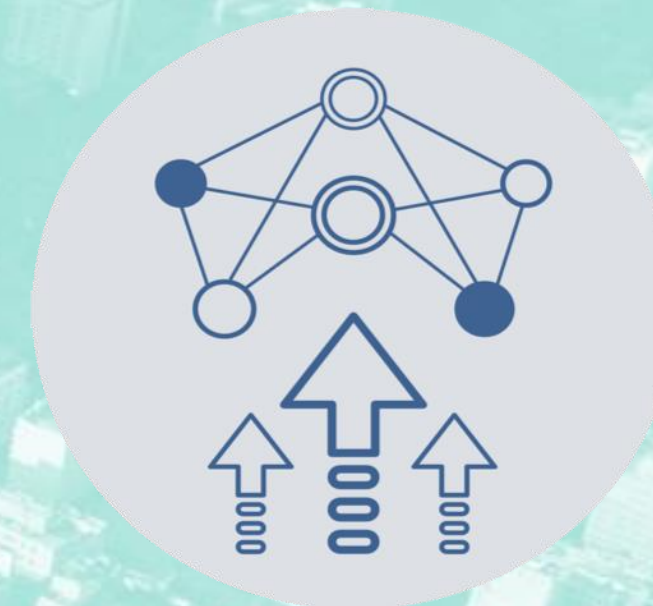
ARCCA

The Alliance of Regional Collaboratives for Climate Adaptation

A network of leading regional collaboratives from across California that work together to advance adaptation statewide and increase local capacity to build community resilience.



Peer-to-Peer Network



Supporting Emerging Collaboratives



Knowledge Exchange



State Engagement

Origins of LA's Cool Roof Policy

- **2008.** LARC founded
- **2010.** Climate Resolve (CR) founded
- **2011.** ARRA funding for research
- **2012.** CR works with Los Angeles Department of Water & Power and Dept of Bldg & Safety
- **2013.** UCLA release of first temperature study. Mayor Villaraigosa directs B&S to craft new building regulations for residential cool roofs. LA City Council unanimously approves code update which includes residential cool roof standards
- **January 2015.** Becomes law.



LA's Cool Roof Ordinance

99.01.101.3. Scope. The provisions of this code shall apply to the construction, of every new building, every building alteration with a building permit valuation of \$200,000 or more and every building addition, unless otherwise indicated in this code, through-out the City of Los Angeles.

EXCEPTIONS:

- 1. Roof repair; or
- 2. Roof replacement when the roof area being replaced is equal to or less than 50% of the total roof area; or
- 3. Building-Integrated Photovoltaics (BIPV)

TABLE 4.106.5

ROOF SLOPE	MINIMUM 3-YEAR AGED SOLAR REFLECTANCE	THERMAL EMITTANCE	SOLAR REFLECTANCE INDEX SRI
< 2:12	0.63	0.75	75
≥ 2:12	0.20	0.75	16



Update on LA's Cool Roof Policy

#KeepLACool

- 18,000+
- (anecdotaly, many more)
- City of Pasadena
- City of Santa Monica
- County of Los Angeles - September
- SRI = .25 (no incentive)



Cool Streets



LA's Sustainability pLAn – April 2015



TRANSFORMING LOS ANGELES
ENVIRONMENT | ECONOMY | EQUITY

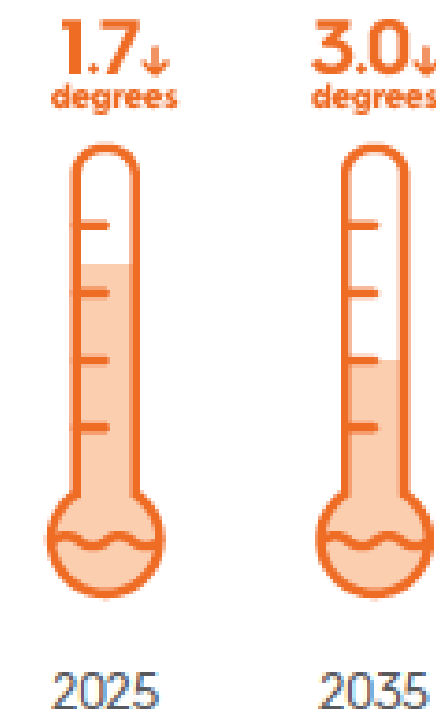


Targets

Long-Term Outcomes

Urban Heat Island:

- Reduce urban/rural temperature differential by at least:



City of Los Angeles Resilience Plan – February 2018



GOAL 6: PREPARE AND PROTECT THOSE MOST VULNERABLE TO INCREASING EXTREME HEAT

32 DEVELOP AN URBAN HEAT VULNERABILITY INDEX AND MITIGATION PLAN TO PREPARE FOR HIGHER TEMPERATURES AND MORE FREQUENT EXTREME HEAT

Develop a framework for prioritizing neighborhoods, engaging stakeholders, creating policies, identifying funding sources, and recommending budgets in support of changes that will lead to a heat-resilient Los Angeles.

The City will support and participate in community-led efforts to identify barriers and opportunities to accelerating extreme heat mitigation. TreePeople and Climate Resolve will bring their expertise in partnership-building and complex urban environmental problem-solving to co-facilitate the creation of a Los Angeles Urban Heat Island Mitigation Plan. The plan will include policy frameworks and

directives; a neighborhood prioritization framework; engagement toolkits for communities, businesses, and other stakeholders; and other elements as they are identified. The plan will also engage with the public health community to incorporate a method for identifying populations most at risk of heat-related health problems and develop plans for outreach and intervention on high-heat

days. The plan will be informed by stakeholder engagement, including from City departments and community members, and it will identify City policies that can be changed, augmented, or created to support heat mitigation. Concurrently, an advisory group will provide advice on engaging communities in adopting heat mitigation practices and behaviors.

SHOCKS/STRESSES



TIMEFRAME



PARTNERS

TreePeople / Climate Resolve /
Global Cool Cities Alliance / CSUN / UCLA /
University of Miami / Yale University /
LAUCC / City departments / LADPH

33 DEVELOP AND LAUNCH A NEIGHBORHOOD RETROFIT PILOT PROGRAM TO TEST COOLING STRATEGIES THAT PREPARE FOR HIGHER TEMPERATURES

A neighborhood retrofit pilot program to test heat-adaptation strategies will inform future citywide implementation efforts—including increased vegetation cover, reflectivity, and community empowerment tools.

In partnership with experts, the City will support the development of a neighborhood retrofit pilot program that will test cost-effective cooling strategies to increase vegetation cover and reflectivity. The retrofit program will demonstrate cooling, public health improvements, and other benefits for

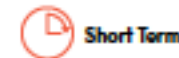
residents. It will also feature education and engagement supporting community action and behavior changes. This will be achieved by engaging community members in creating retrofit designs that are neighborhood-appropriate and by offering educational how-to workshops to support simple strategies such as planting

trees and employing naturally cooling materials on roofs and other surfaces. Through this pilot program, our partners will seek to introduce new climate and social science, decision-support tools, and tangible demonstrations that will accelerate Los Angeles' transition to extreme heat resilience.

SHOCKS/STRESSES

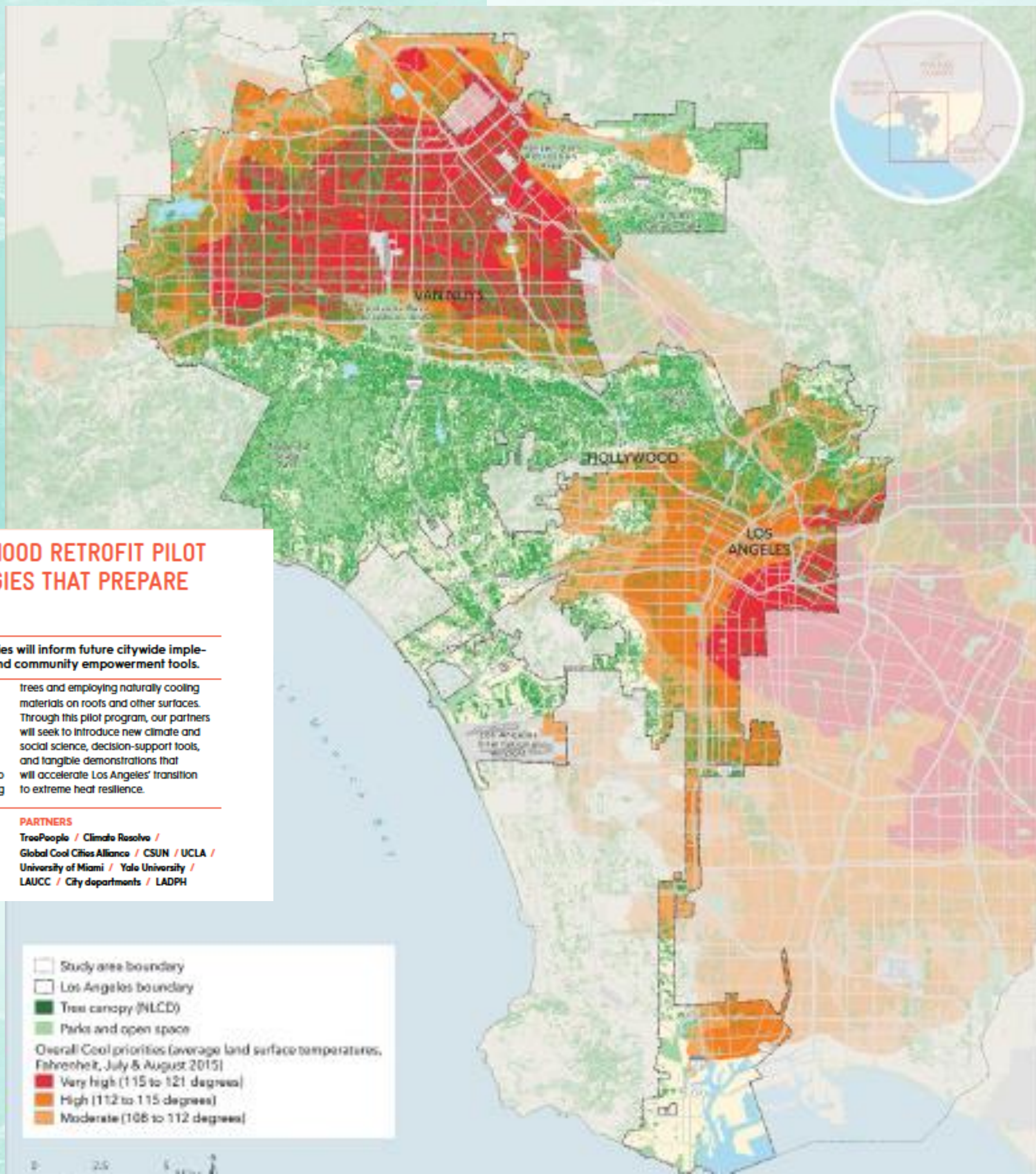


TIMEFRAME



PARTNERS

TreePeople / Climate Resolve /
Global Cool Cities Alliance / CSUN / UCLA /
University of Miami / Yale University /
LAUCC / City departments / LADPH



Climate Resolve

climateresolve.org

THANK
YOU!

213-634-3790

Jonathan Parfrey | jparfrey@climateresolve.org

