

Sustaining California's Climate Assessments

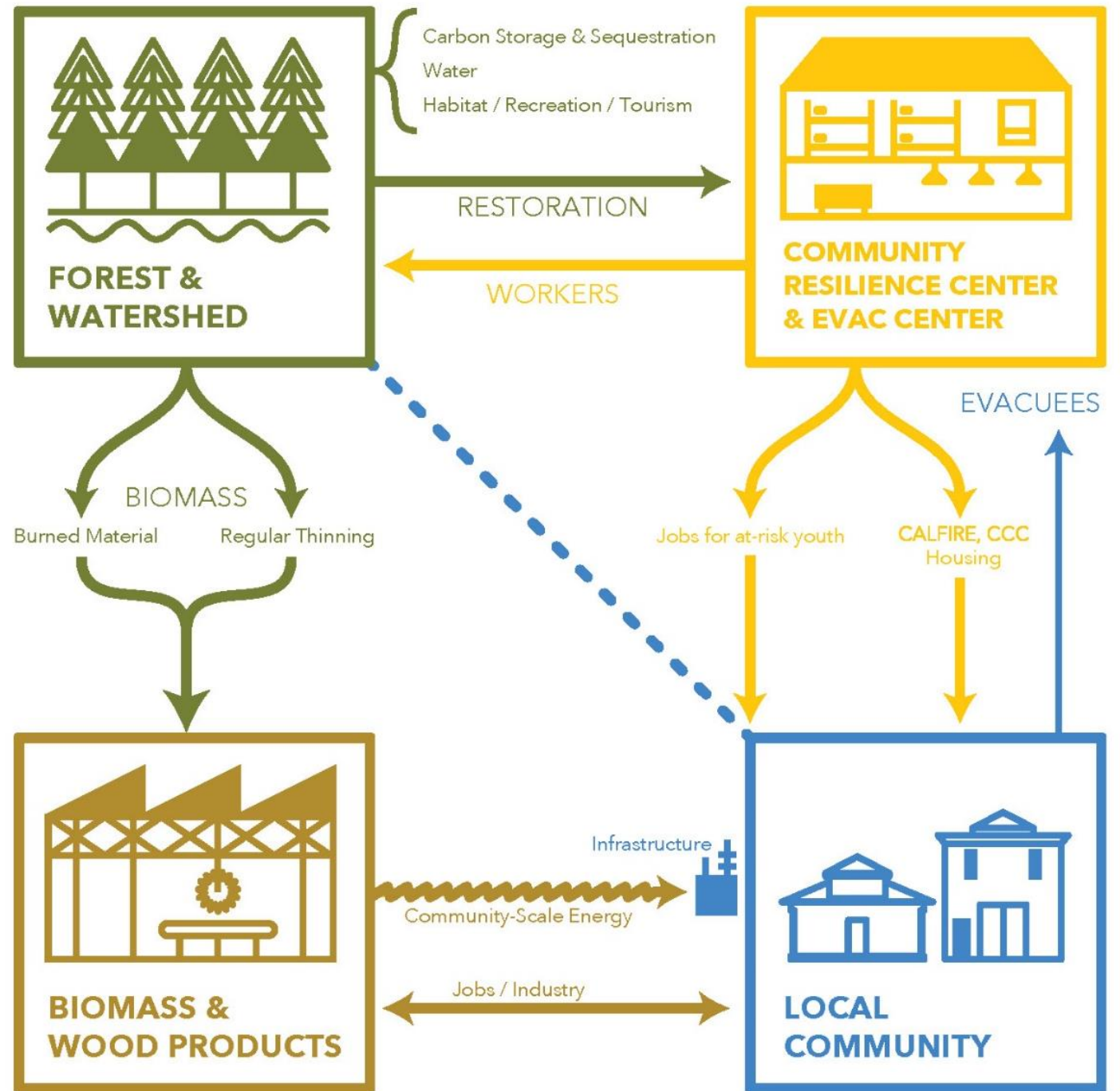
Louise Bedsworth, PhD

Executive Director, California Strategic Growth Council

Co-Coordinating Lead Author, Statewide Summary Report, Fourth California
Climate Change Assessment

Community and Watershed Resilience Program

- Program elements work together
- Tracking local and statewide program benefits
- Goals:
 - Resilience and recovery
 - Link environmental goals and economic development
 - Overcome economic barriers
 - Replicable model



Outline

- Evolution of California's Climate Change Assessments
 - Policy drivers and policy outcomes
 - Audiences and users
- Opportunities and Challenges for Sustaining Assessment Processes
- Looking ahead

Evolution of California's Assessment

2006

- **FIRST CALIFORNIA CLIMATE CHANGE ASSESSMENT**
- Understanding statewide impacts of climate change
- Supporting policies to reduce GHG emissions, adoption of the Global Warming Solutions Act of 2006

2009

- **SECOND CALIFORNIA CLIMATE CHANGE ASSESSMENT**
- Assessing sector-specific climate change impacts
- Evaluating and informing the benefit of adaptation actions

2012

- **THIRD CALIFORNIA CLIMATE CHANGE ASSESSMENT**
- Improved understanding of the vulnerability of human and natural systems, including two pilot regional studies
- Contributed to passage new climate adaptation laws

2018

- **FOURTH CALIFORNIA CLIMATE CHANGE ASSESSMENT**
- Designed to support adaptation at the state, regional, and local level
- Includes 9 regional reports

Policy Drivers and Outcomes



Source: E&E News

Policy Drivers and Outcomes



Source: E&E News



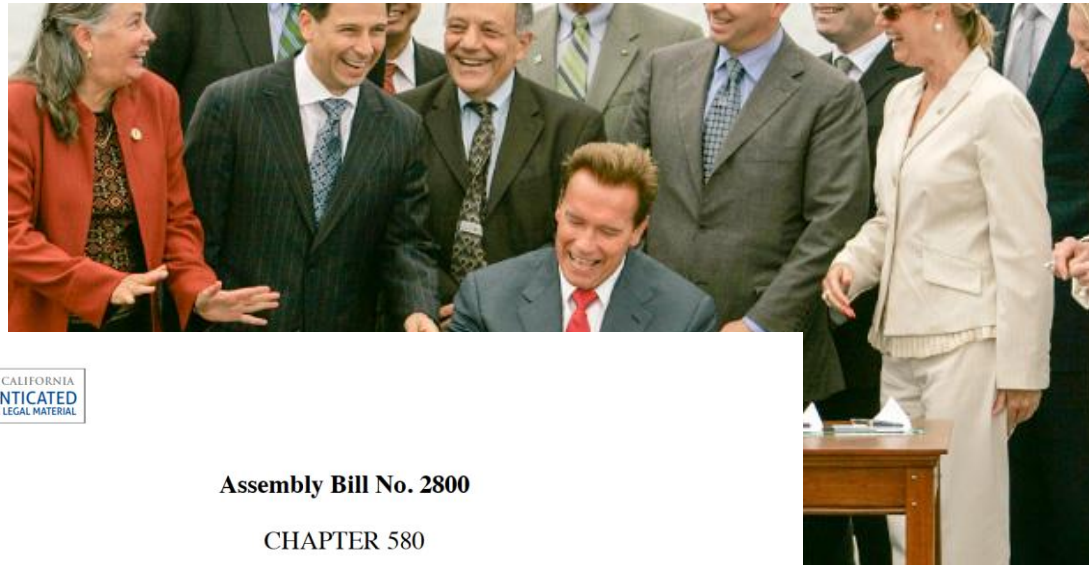
Policy Drivers and Outcomes



Source: E&E News



Policy Drivers and Outcomes



Assembly Bill No. 2800

CHAPTER 580

An act to add and repeal Section 71155 of the Public Resources Code, relating to climate change.

[Approved by Governor September 24, 2016. Filed with Secretary of State September 24, 2016.]

LEGISLATIVE COUNSEL'S DIGEST

AB 2800, Quirk. Climate change: infrastructure planning.

Existing law requires the Natural Resources Agency, by July 1, 2017, and every 3 years thereafter, to update the state's climate adaptation strategy to identify vulnerabilities to climate change by sectors and priority actions needed to reduce the risks in those sectors.

This bill, until July 1, 2020, would require state agencies to take into account the current and future impacts of climate change when planning, designing, building, operating, maintaining, and investing in state infrastructure. The bill, by July 1, 2017, and until July 1, 2020, would require

Source: E&E News



February 2015

Climate Change Research Plan for California

Assessment Audiences



Opportunity: Accessibility and Usability



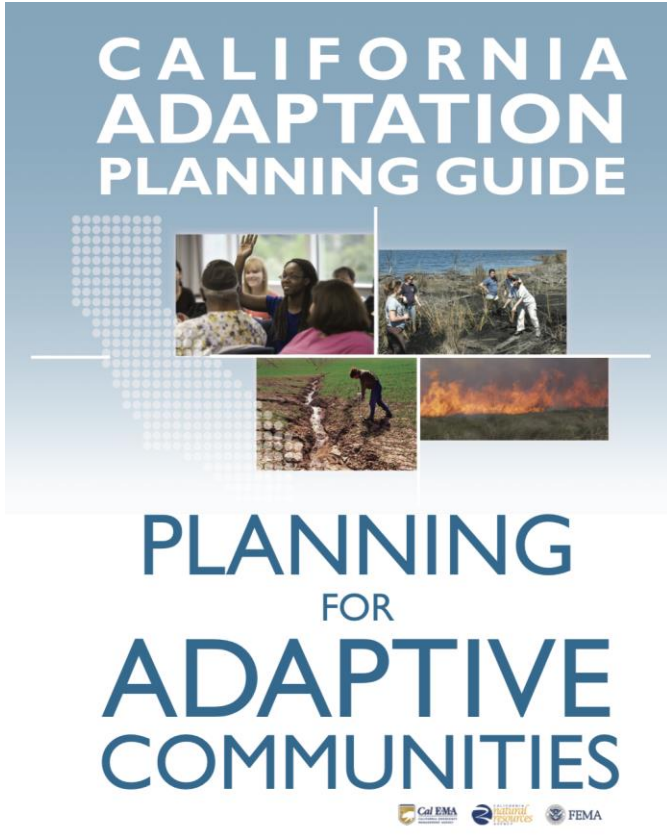
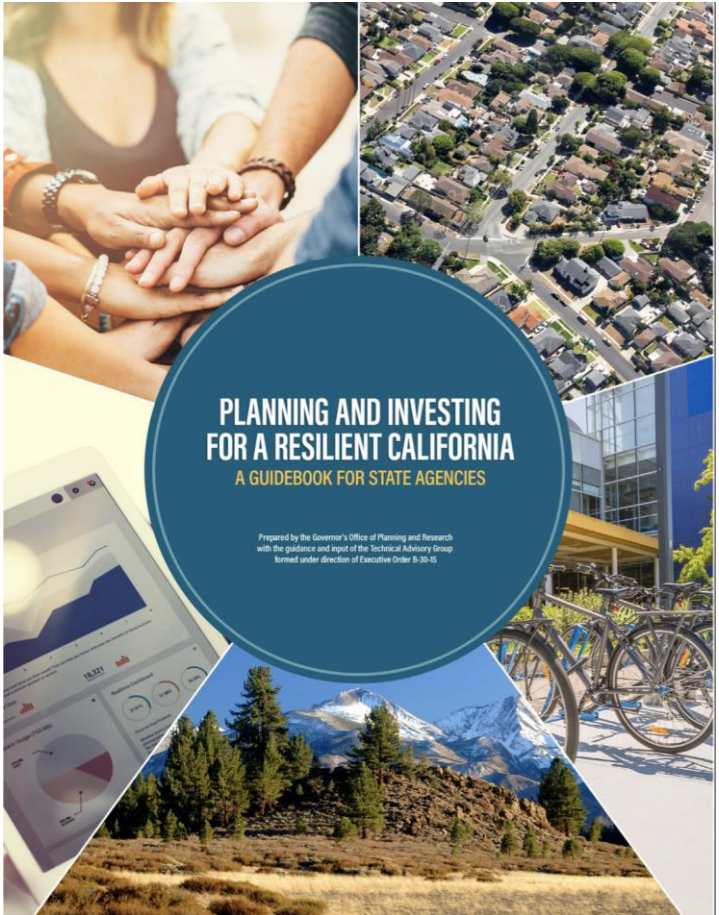
The screenshot shows the homepage of the cal-adapt website. At the top left is the 'cal-adapt' logo. At the top right is a navigation menu with links for TOOLS, DATA, RESOURCES, BLOG, ABOUT, and HELP. The main content area features a large background image of a snowy mountain landscape. Overlaid on this image is the title 'Exploring California's Climate Change Research' and a sub-headline: 'Cal-Adapt provides a view of how climate change might affect California. Find tools, data, and resources to conduct research, develop adaptation plans and build applications.' Below this text is a row of seven circular icons, each representing a different climate-related topic. From left to right, these are: 1. A yellow circle with an orange center, labeled 'Annual Averages' and 'Extreme Heat Cooling Degree Days'. 2. A blue circle with an orange center, labeled 'Annual Averages' and 'Heating Degree Days'. 3. A circle containing two blue water droplets, labeled 'Annual Averages'. 4. A circle containing a blue snowflake, labeled 'Snowpack'. 5. A circle containing a blue sun over waves, labeled 'Sea Level Rise'. 6. A circle containing an orange and red flame, labeled 'Wildfire'. 7. A circle containing a blue winding river, labeled 'Streamflow'.

Climate Tools

Download Data

Find Resources

Cal-Adapt Supports Planning at the State and Local Level



Challenge: Accessibility



Climate Tools

Download Data

Find Resources

- Meeting multiple user needs
- Diversifying and sustaining funding
- Institutionalization

Assessment Audiences



People are Central

- Governance challenges
 - Jurisdictional relationships
 - Cascading events
- Disparities and equity
 - Capacity
 - Resources



Looking Ahead

Evolving Research Needs

- Cross-sectoral analyses
- Social dimensions of change and action
- Actionable information
- Climate justice and equity

Focus on Assessment to Action

- Integration of climate impacts into planning
 - State level
 - Local level
- Evaluation and monitoring of progress