



Implementing A Just and Equitable Energy Transition

**DIAMOND SPRATLING, MPH
GEM PROJECT MANAGER**

Greenlink Analytics

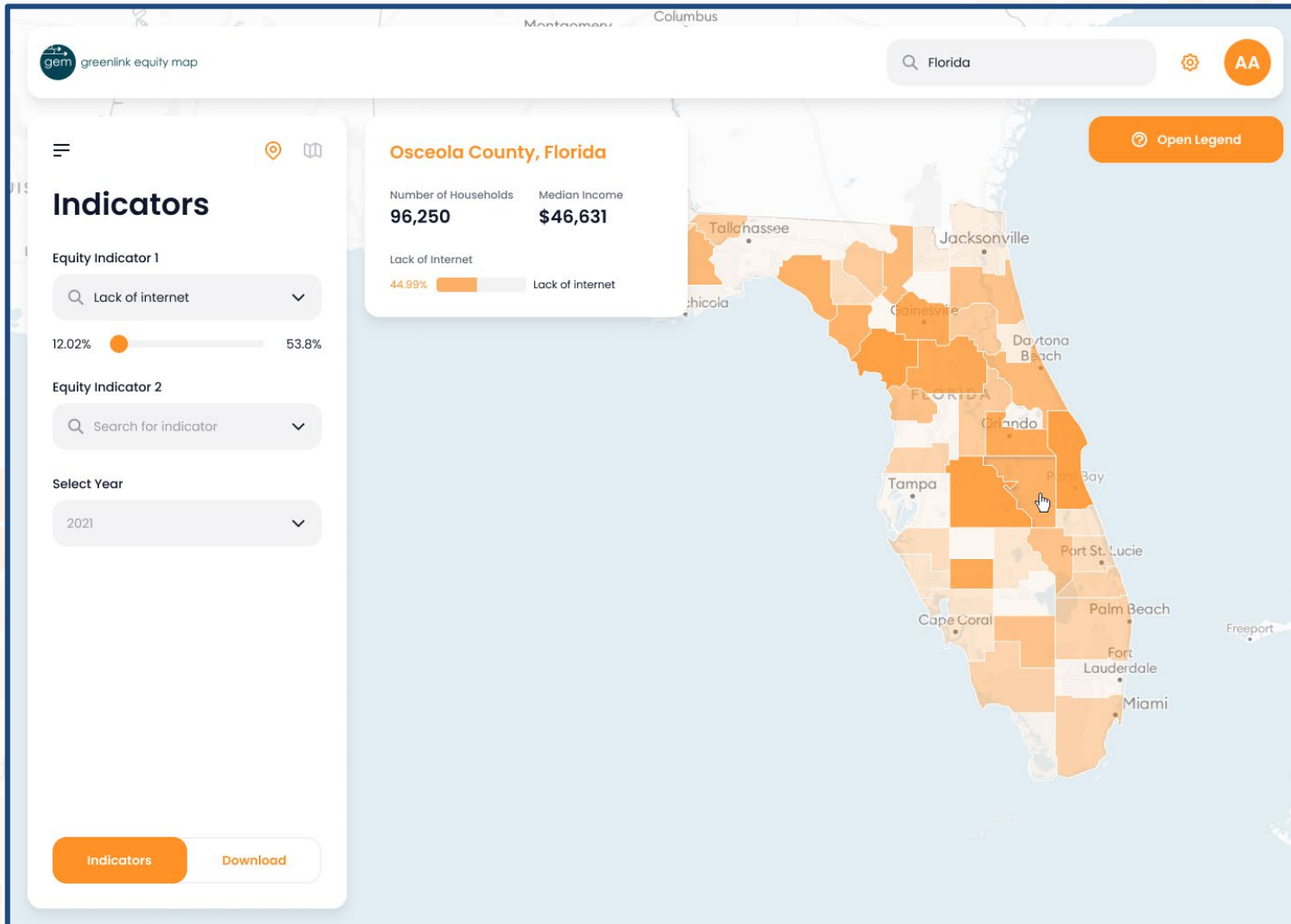
USING DATA FOR GOOD

- 501(c)(3) non-profit organization based in Atlanta, working with cities and community based organizations across the U.S.
- Using data analytics to solve the world's most pressing issues
- Our goal is to move toward clean energy as fast and fair as possible
- Working with 80 cities across 30 states, designing policies and programs avoiding 4.7 billion tons of CO₂ to date

Greenlink Equity Map

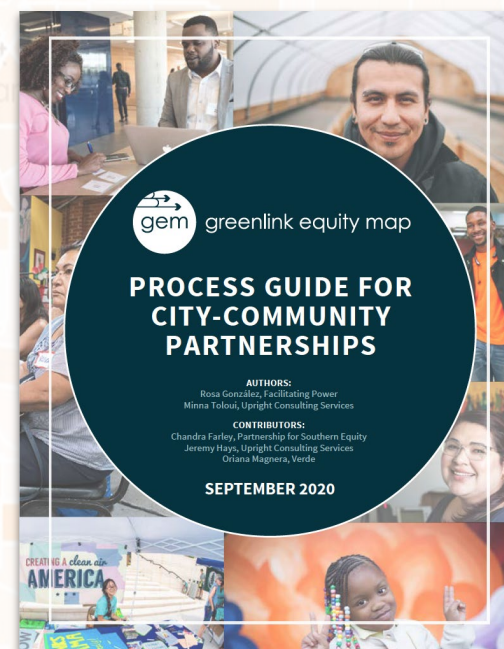
- GEM is an online tool designed to help cities and community based organizations visualize equity-related issues and how burdens are spread across neighborhoods
- GEM includes over 35 indicators ranging from energy burden, eviction data, asthma rates, racial composition, income stress, and even lack of internet access
- GEM allows cities and community-based organizations to use data to drive their work and make evidence-based decisions

Greenlink Equity Map



Working with Cities and Community Based Organizations

- Deceleration News, an environmental justice CBO, used GEM to identify the highest severe energy burdened communities in San Antonio, Texas, spurring the local utility to deliver targeted efficiency investments.
- Orlando used GEM in the evaluation of building resiliency due to weather and climate events; they are now using it to develop a BPS policy.
- Denver is using GEM to develop an index to qualify areas for funding to improve equity and reduce emissions through clean energy.



Impact of our Work

We've saved cities and decision makers \$470 billion dollars through our clean energy recommendations

We've saved 2,500 lives across the US since 2018 with our clean energy work

We've avoided 4.7 billion metric tons of CO2 emissions from entering into the atmosphere



Connect with Us!

dspratling@greenlinkanalytics.org

equitymap.org

greenlinkanalytics.org

