

Planetary Science R&A Update

- I am the R&A lead for SMD, not in PSD
- The good news is that makes me (sort of) independent
- The bad news is that in some cases I will not be able to tell you why.

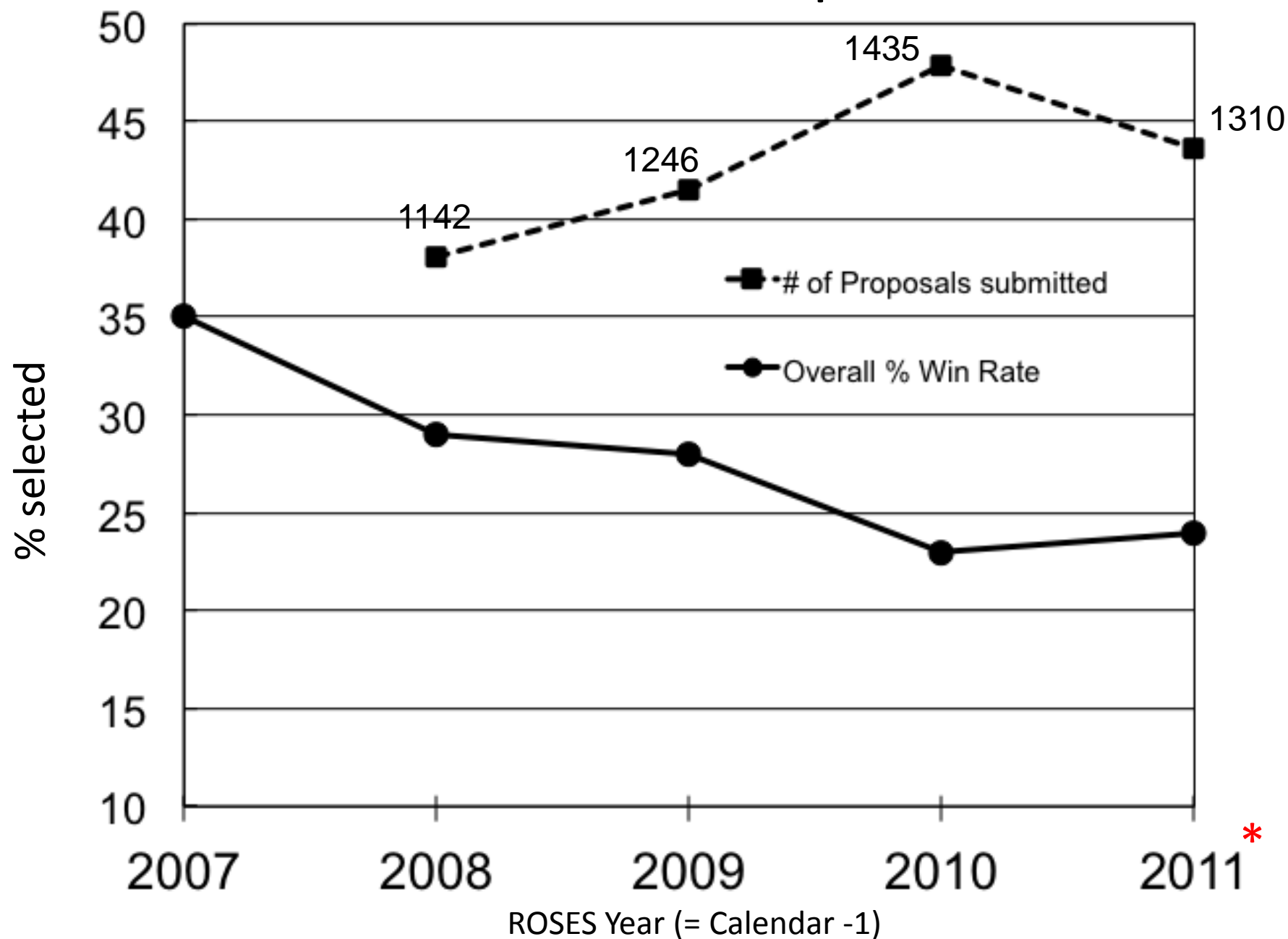
SARA

- SARA = the SMD Research and Analysis (R&A) Lead
- <http://sara.nasa.gov>
- sara@nasa.gov
- All kinds of grant stats
- RSS feed for clarifications, corrections and amendments to ROSES
- Planetary Science Division Corner with PSD specific information and presentations (including this one will be posted there next week).

Selection Rates: Caveats and Factors

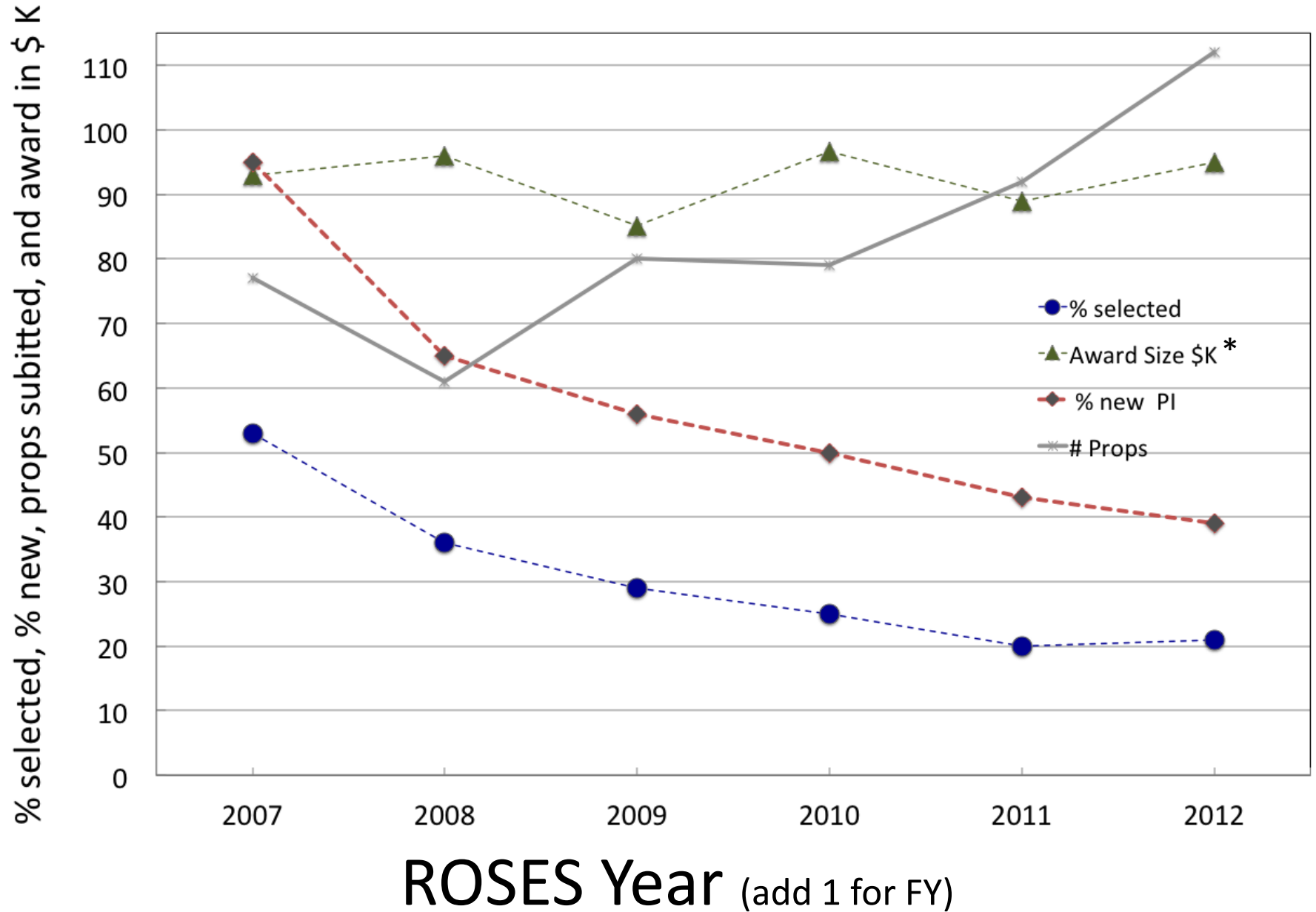
- Years on X axis of plots are "ROSES" years, funds come one year later e.g., ROSES 2010 = Fiscal 2011.
- Even the ROSES 2011 data is not quite yet done, the LASER program data is missing
- Given a fixed budget for R&A one would expect:
 - an increase in the number of proposals to cause a decrease in selection rate
 - an increase in award size to cause a decrease in selection rate
- Award size and # of proposals appear in plots below
- Award duration can also be a (more complicated) factor at certain times.

PSD Win % and # Props Submitted



* I don't have data for the LASER program in ROSES 2011

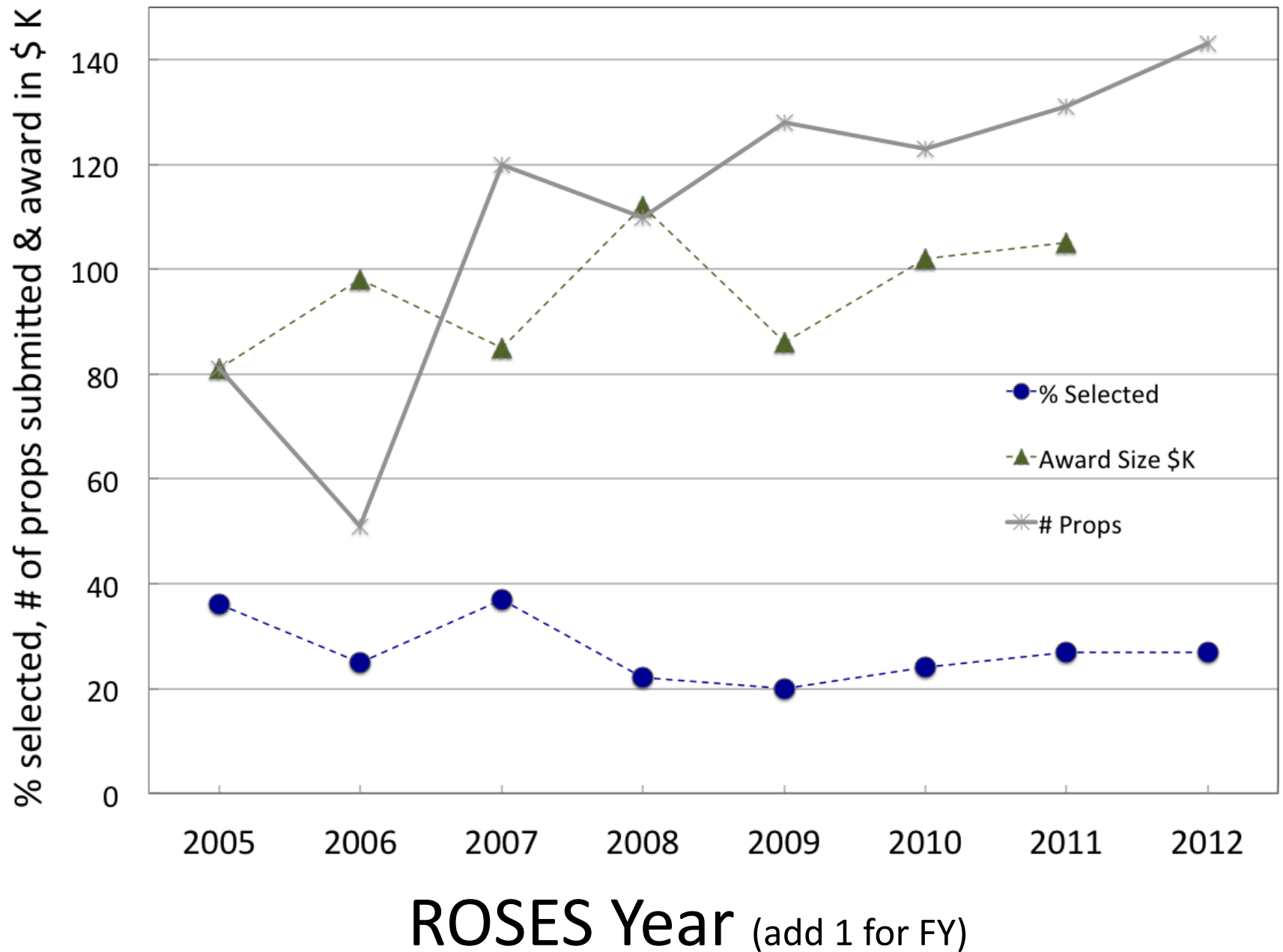
Cassini Data Analysis Summary



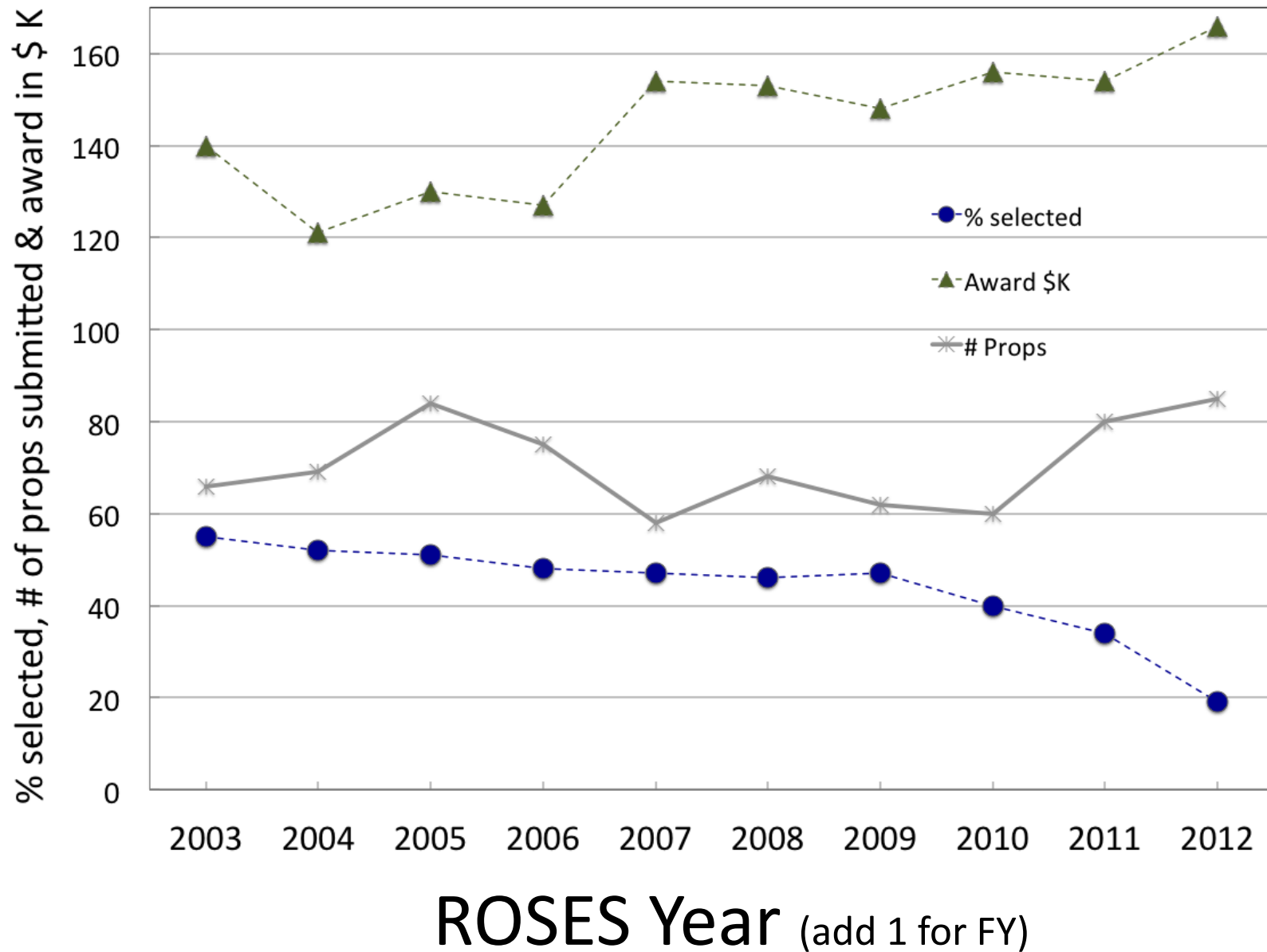
ROSES Year (add 1 for FY)

* Average award size is the average size of the first year of the new awards (only).

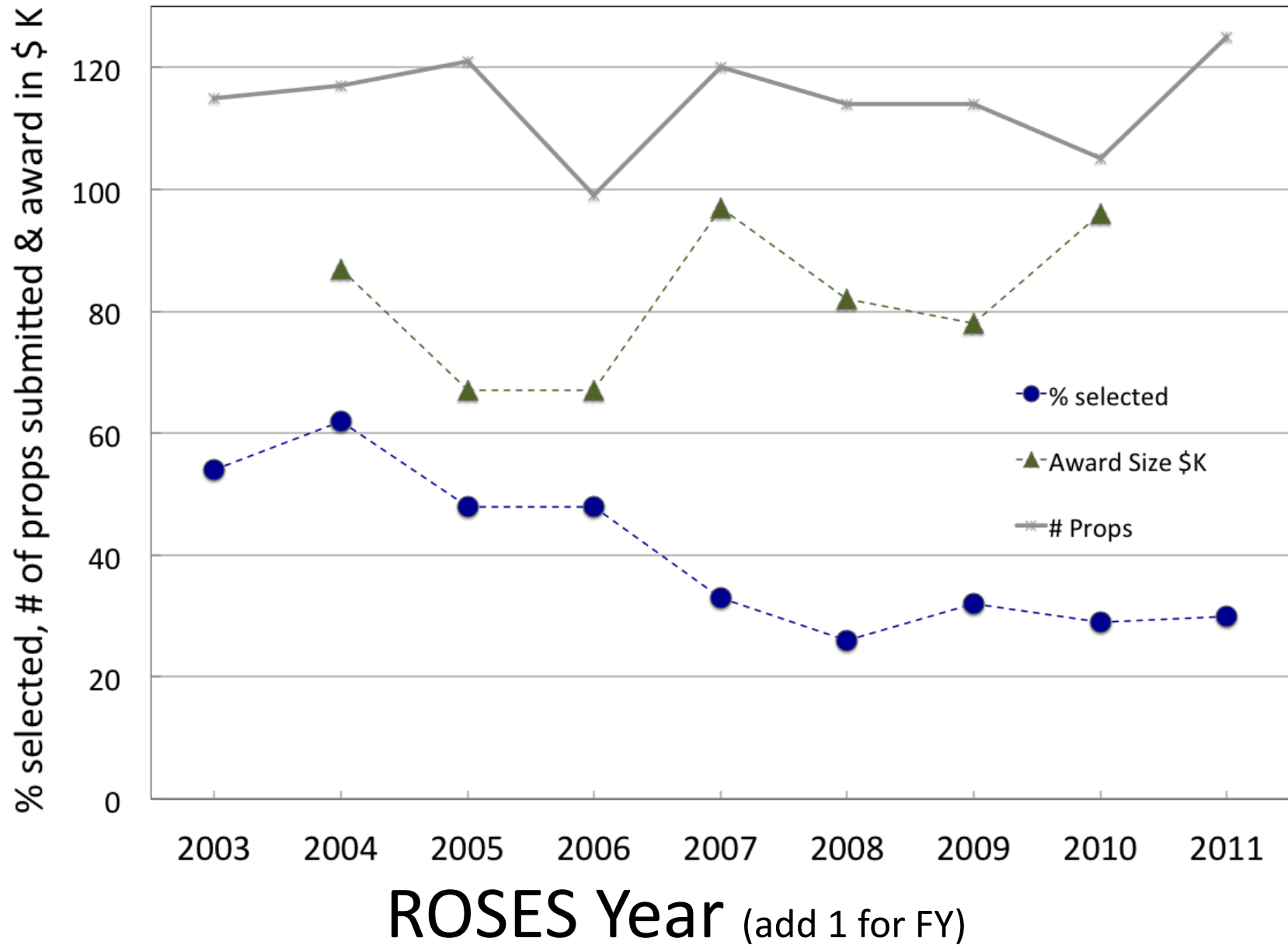
Outer Planets Research Summary



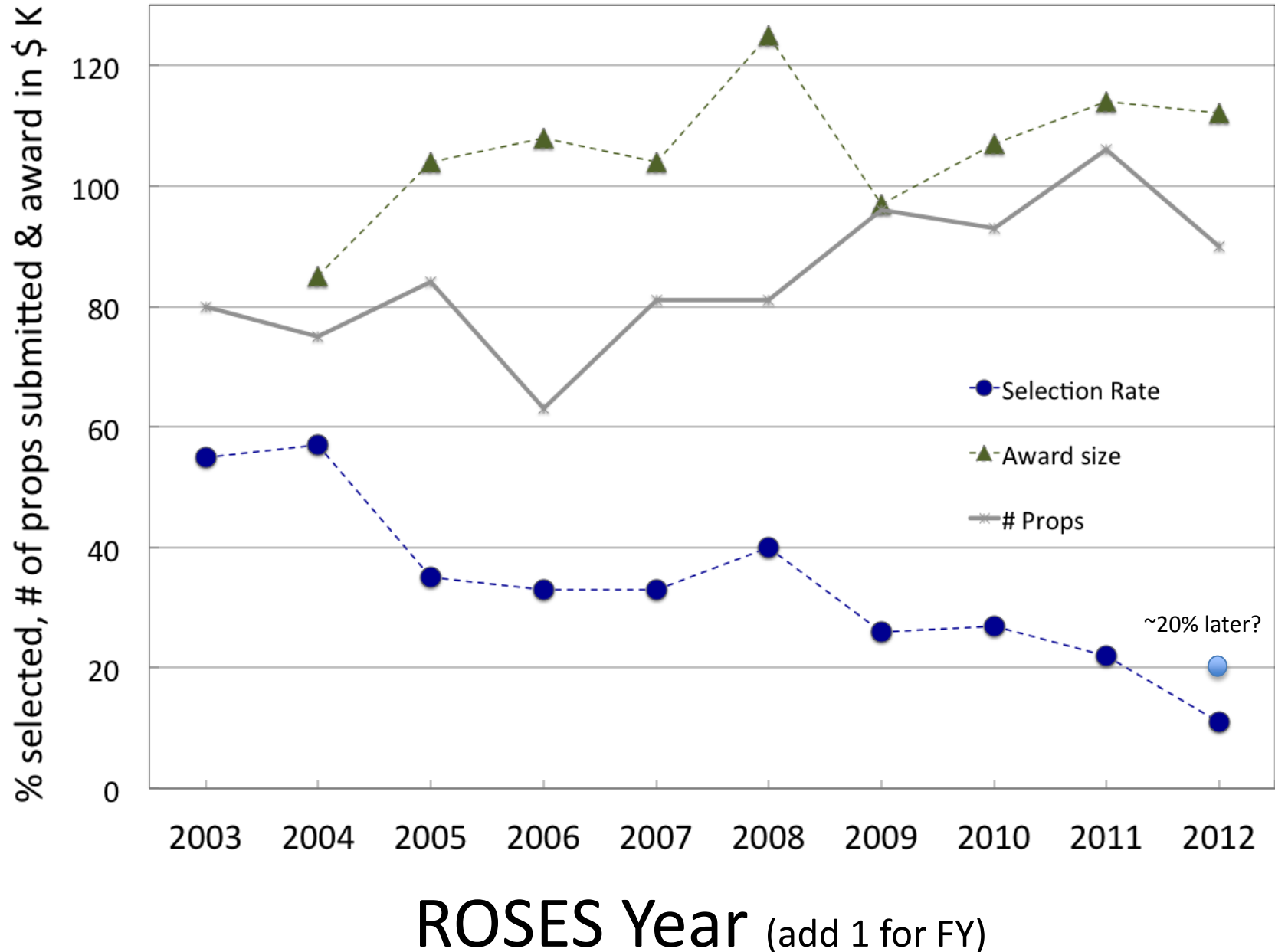
Cosmochemistry Summary



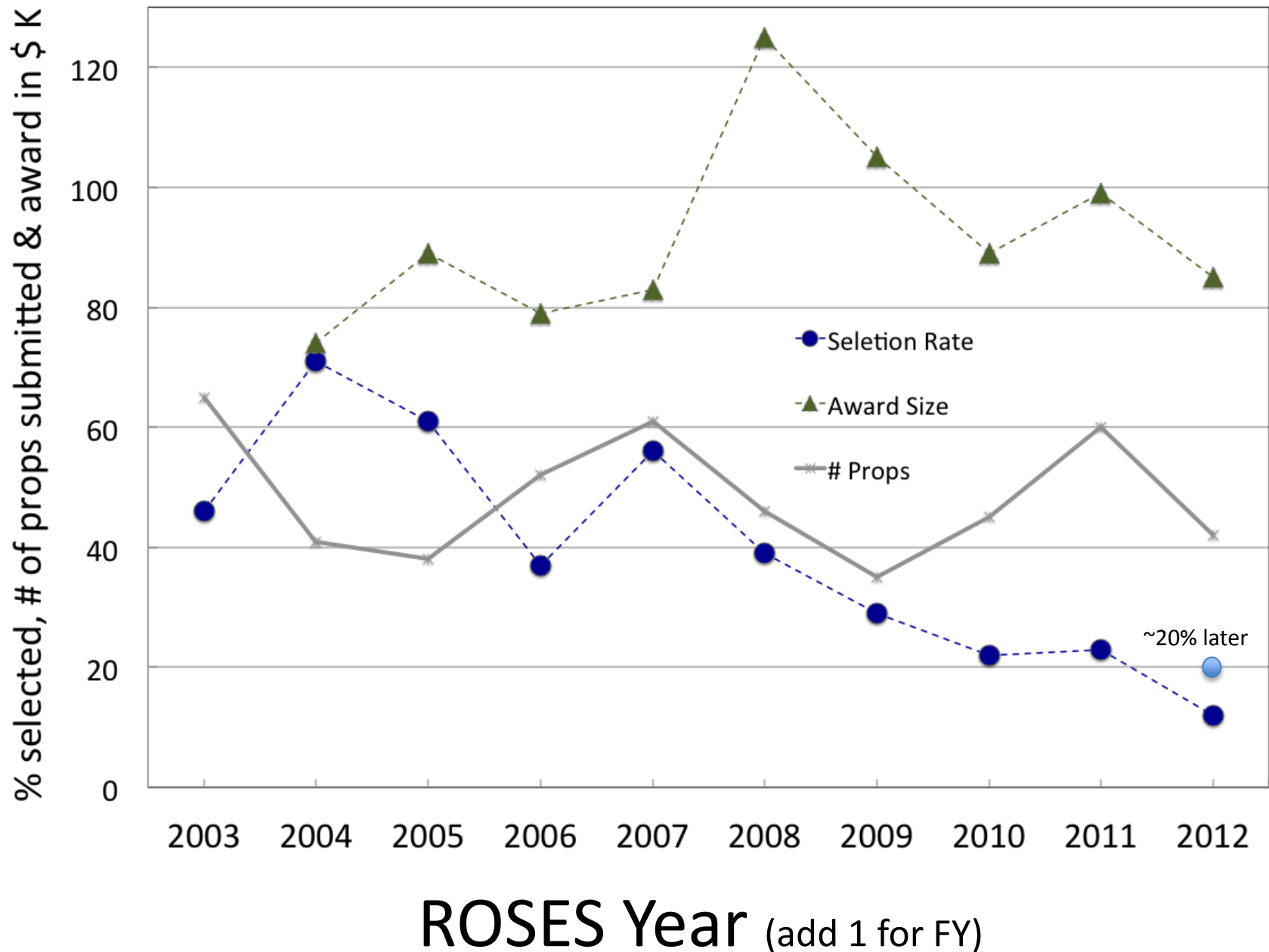
Planetary Geology Summary



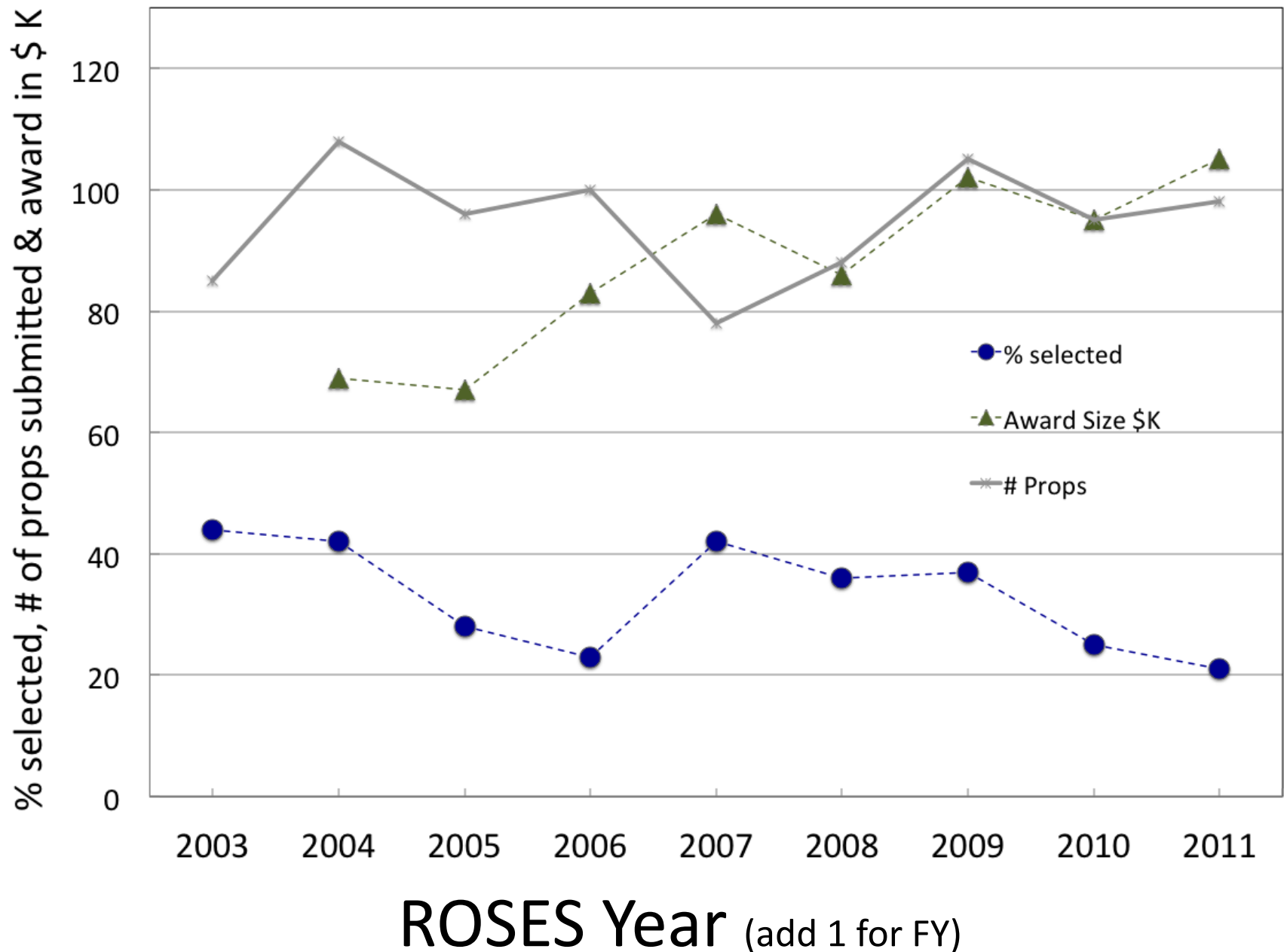
Planetary Atmospheres Summary



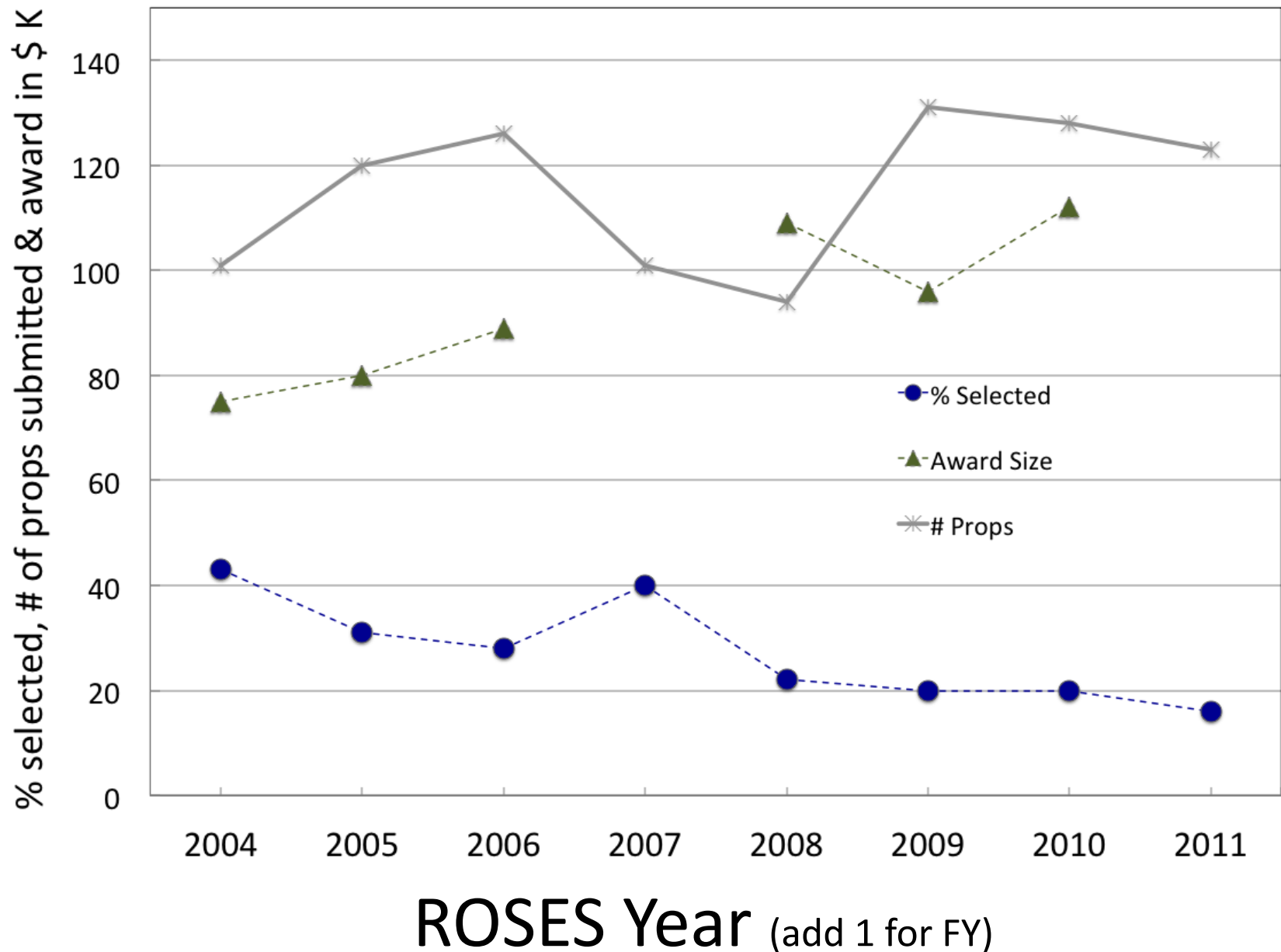
Planetary Astronomy Summary



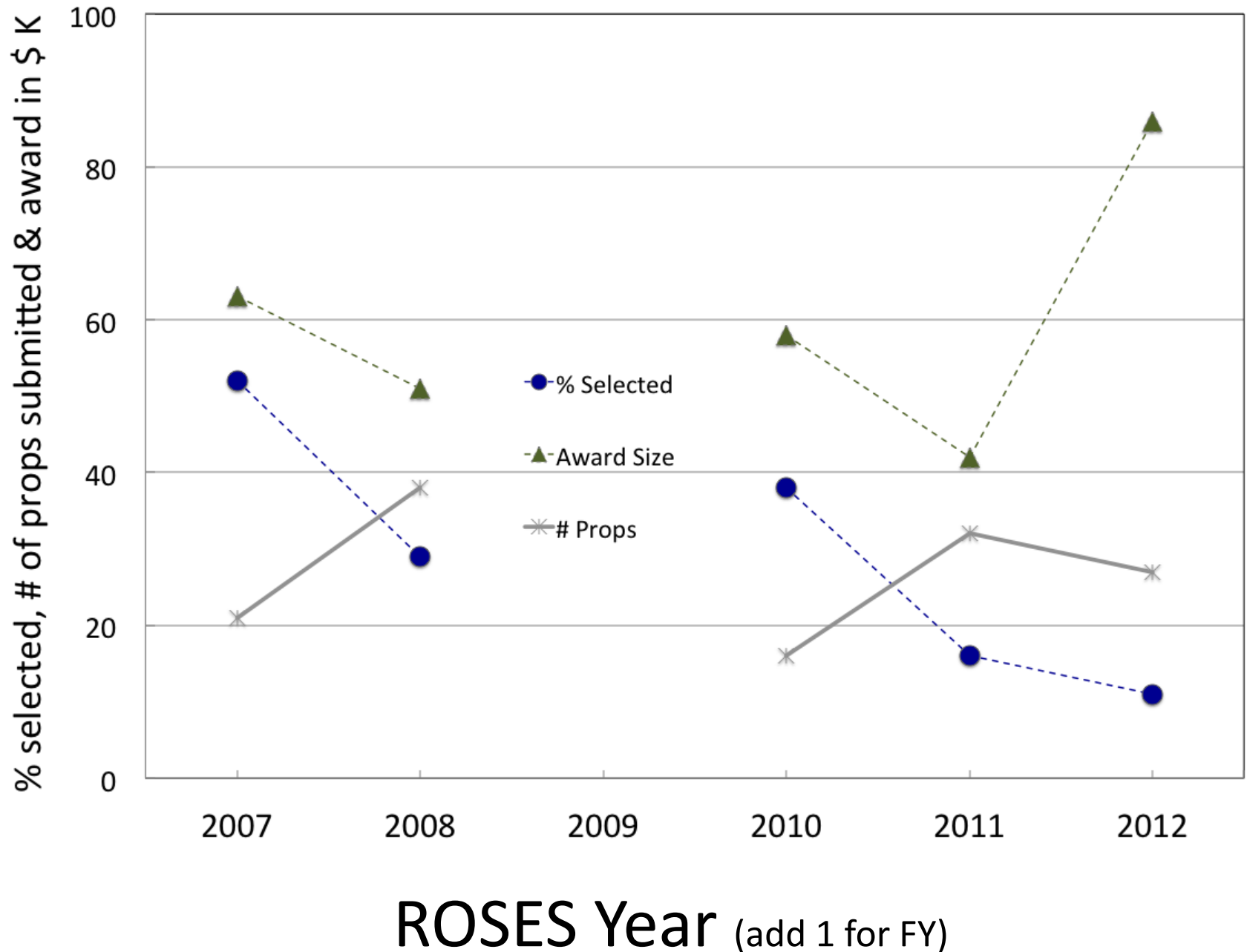
Mars Data Analysis Summary



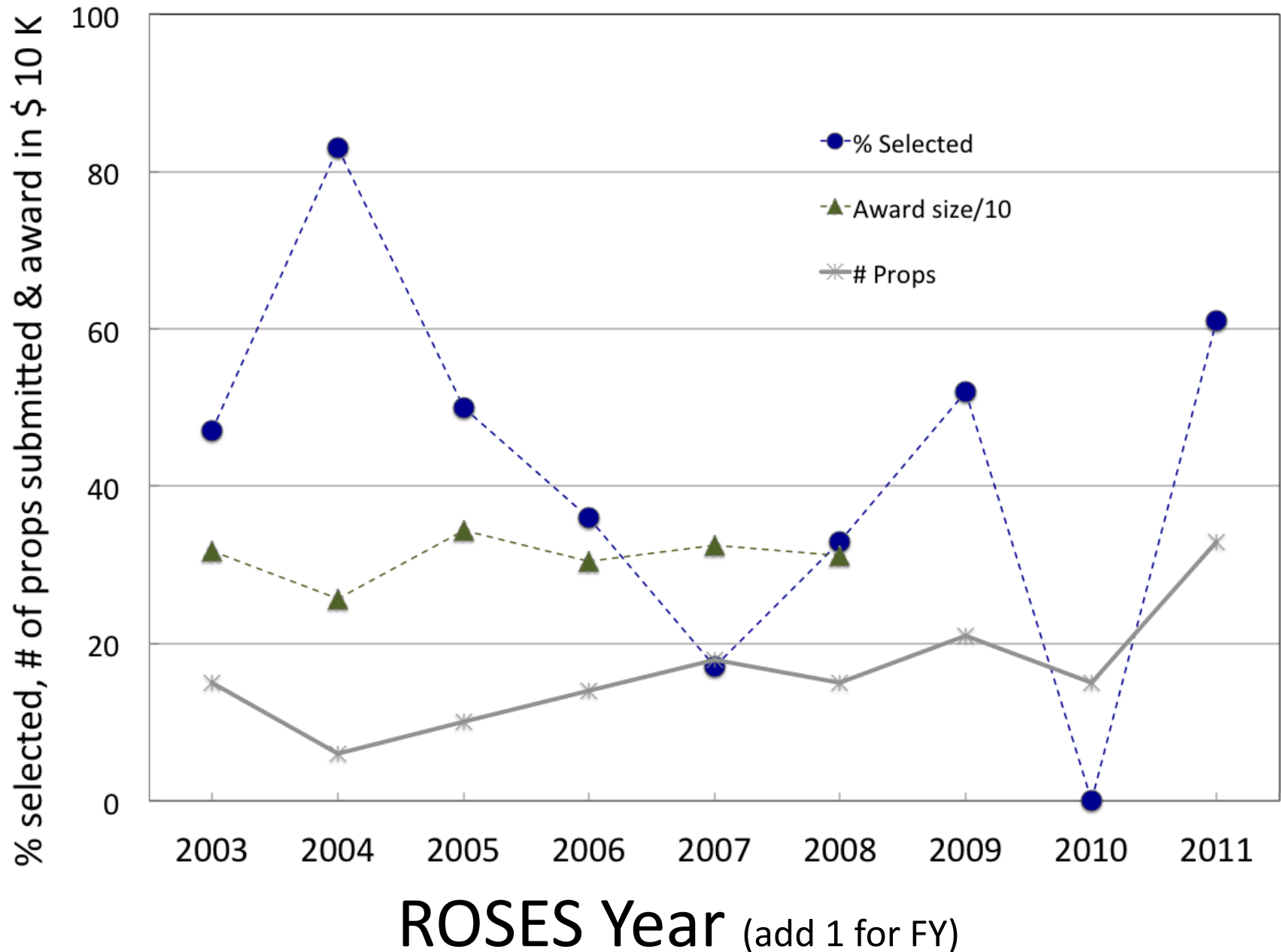
Mars Fundamental Research



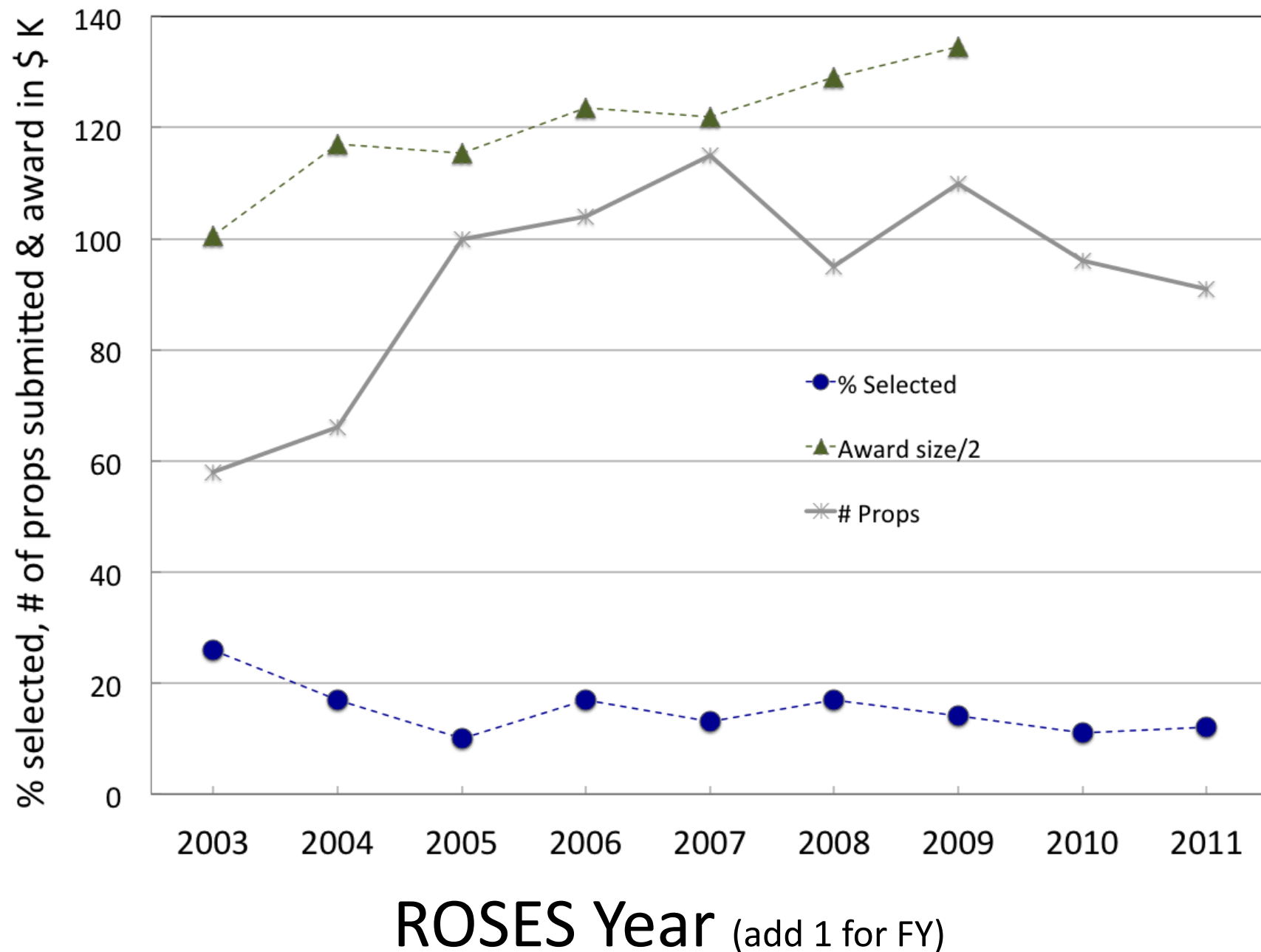
Moon and Mars Analog Mission Activities



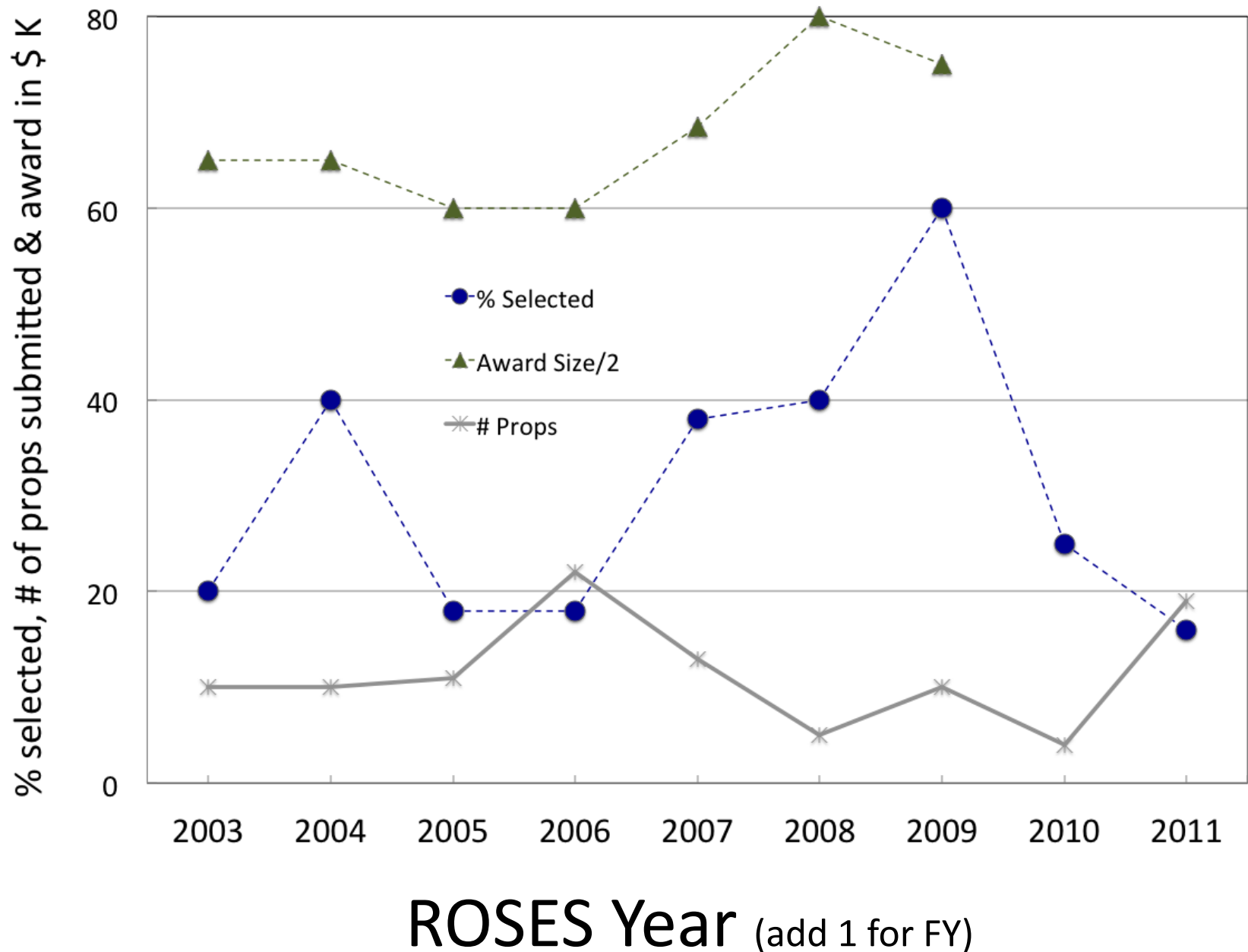
Near Earth Object Observations



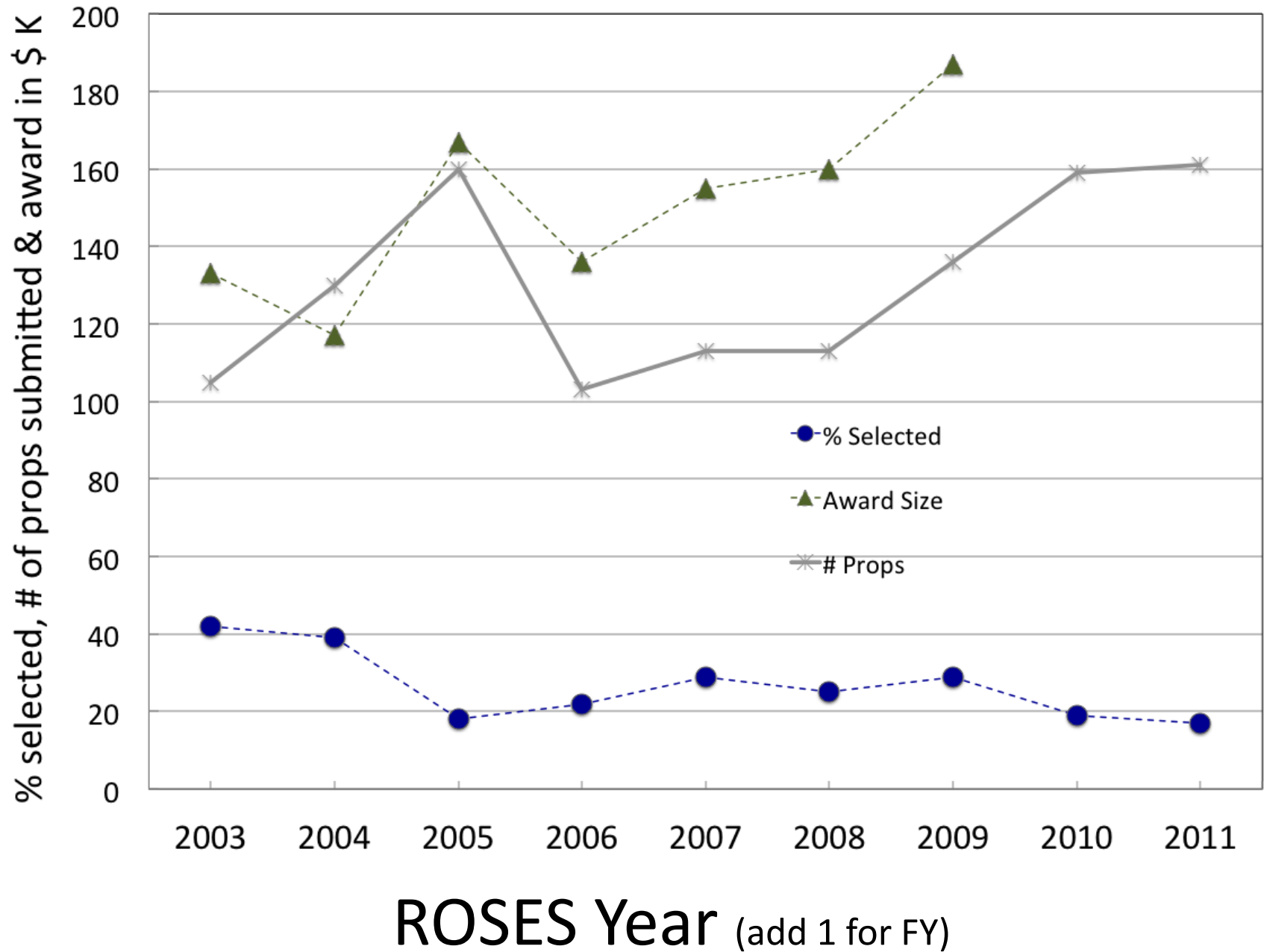
PSD Instrument Definition and Development



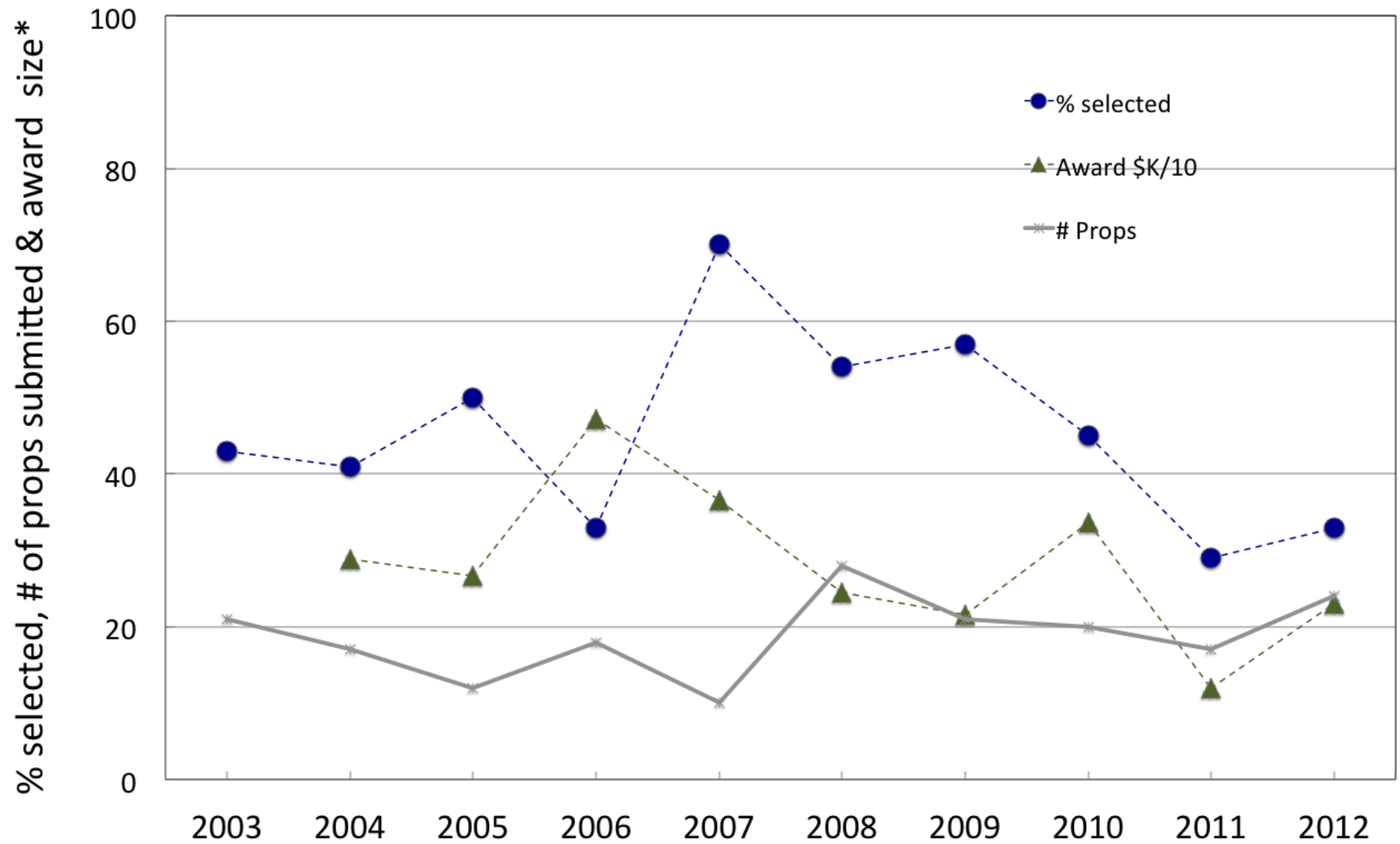
Planetary Protection Research



Exobiology



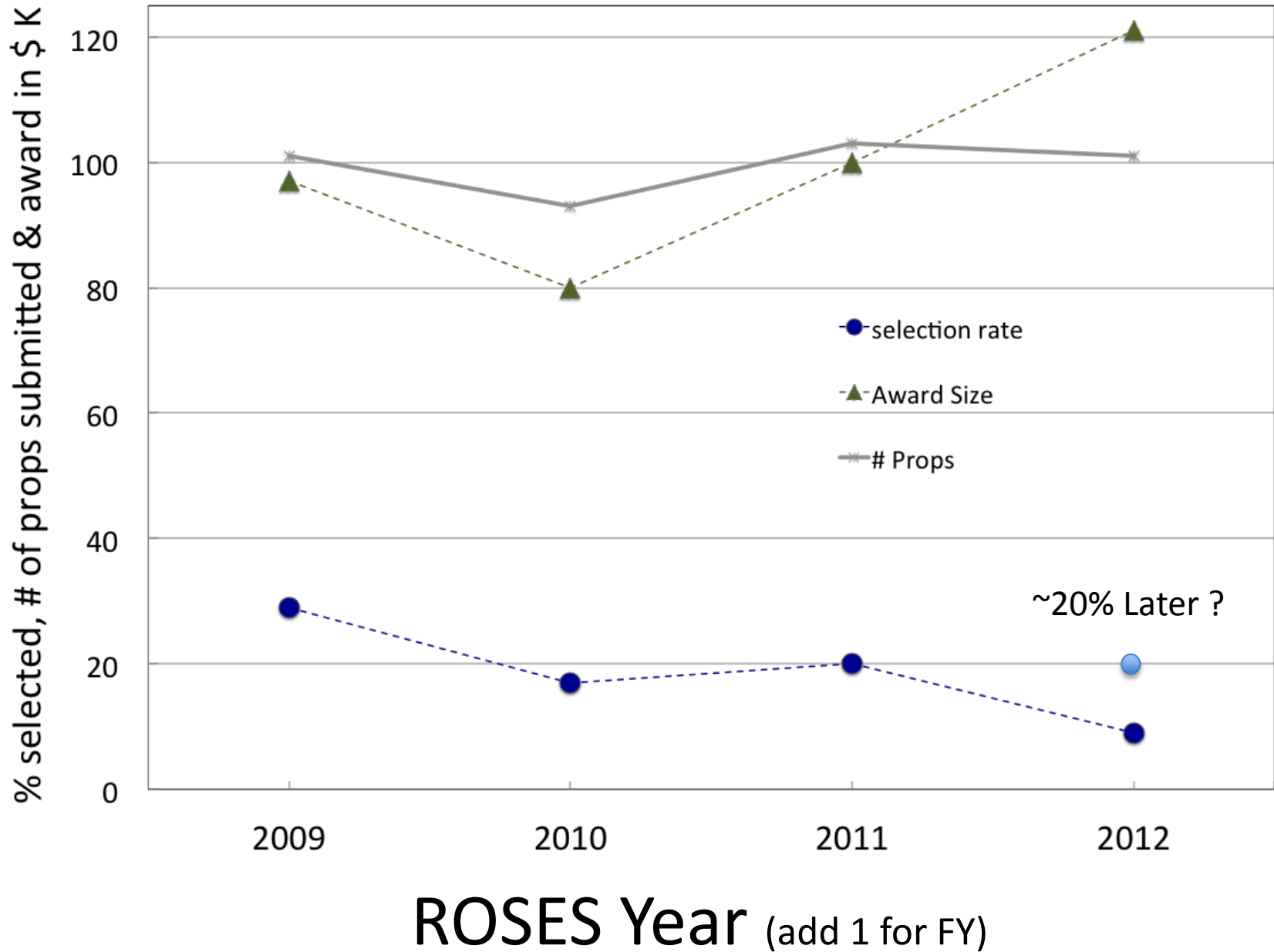
SRLDAP/LARS Summary Chart



* For this chart only award size Yr1 is/10 e.g.,
the average first year of awards in response to
ROSES 2012 was not \$23 K it was \$230 K.

ROSES Year (add 1 for FY)

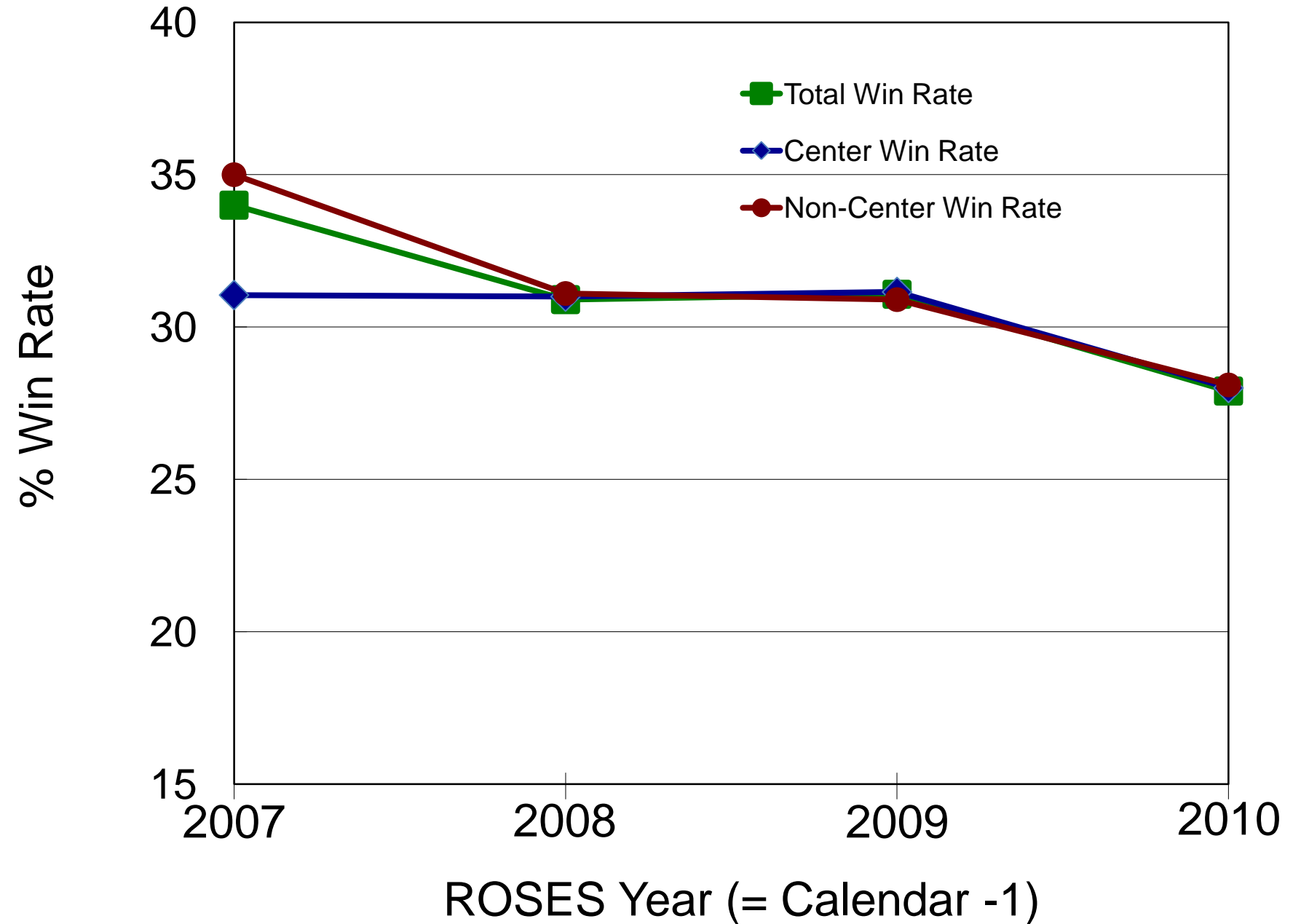
OSS Summary Chart



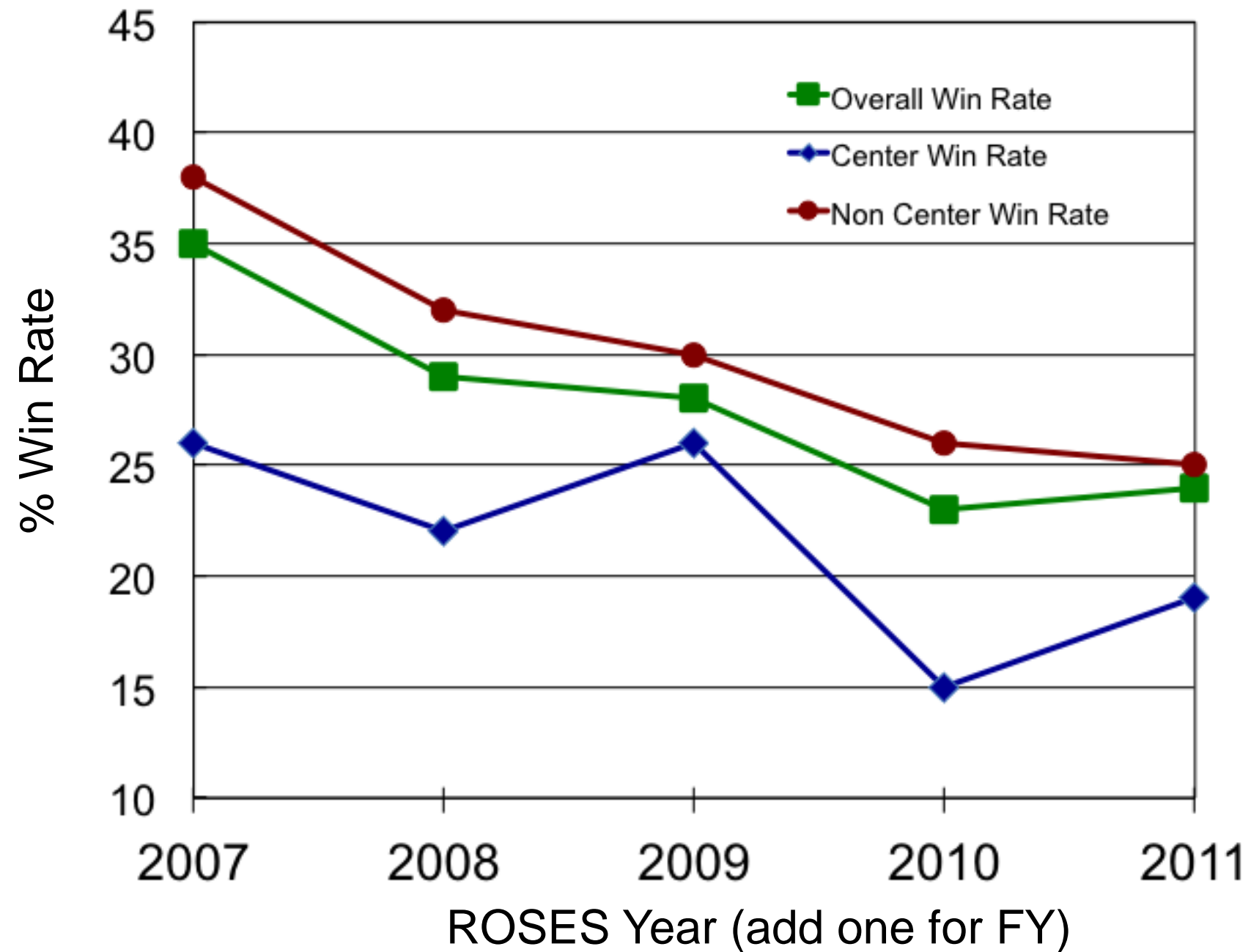
Thank you

- Again, lots of data at <http://sara.nasa.gov>
- Poster at LPSC with more data points
- PSD makes a lot of data available e.g., via the SARA web page
- Send questions about the SMD R&A program to SARA@nasa.gov

Overall SMD Win Rates vs. ROSES Year by Org



PSD Win Rate vs. Year by Org



For Researchers

SARA : Service and Advice for Research and Analysis

Subscribe/Contact SARA

Advisory Committees

Events Calendar

► Division Corner

FAQs

► Grant Solicitations

► Grant Stats

2009 Grant Stats

2008 Grant Stats

2007 Grant Stats

Graphing how long it takes for us to make a selection

NASA Earth and Space Science Fellowship (NESSF) Selections

Program Officers List

► How To Guide

Letters from SARA

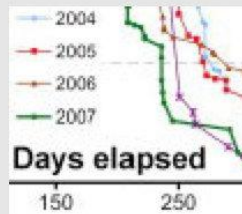
GRANT STATS

ROSES SELECTIONS DATA



[Graphs of Division R&A Selections Through ROSES 2010 \(PDF\)](#)

[Spreadsheet of Selection Stats by ROSES Program \(XLSX\)](#)






[Graphing how long it takes for us to make a selection](#)




[Plots of grades vs. who gets selected](#)

The links for ROSES 2010 and 2011 selections are external links to NSPIRES. If they don't you please follow this procedure: go to <http://nspires/> → choose solicitations, then choose "Solicitations and Selection Dates" and then choose the year you want from the drop-down menu. Then click the "find" button. This will give you a list of all of the programs for that year. For each

PLANETARY SCIENCE DIVISION CORNER

- [PSD Analysis of Peer Review Load](#)
 - [Plots of selection statistics and award sizes vs. time for selected PSD ROSES programs](#)
 - [Briefing to Subcommittee on Space & Aeronautics Majority House Staff April 12, 2012](#)
 - [NASA Presentations from the 2012 LPSC Conference](#) →
 - [Planetary Budget Spreadsheet Presented at LPSC 2012](#)
 - [Video of Jim Green TEDxNASA comet encounter talk](#) →
 - [Planetary-Related NASA Research and Data Analysis Programs Final Budgets \(FY2003-FY2010\)](#) (45 KB) 
 - [Planetary Science Technology Development: What are we thinking](#) (340 KB) 
 - [Video of Green presentation at NASA night DPS - Oct 14, 2008](#) →
 - [Hertz presentation to SSB Mission-Enabling committee](#) (9.9 MB)  | [Text-only .rtf format](#)
 - [Planetary Science R&A Update Spring 2008](#)
 - [Planetary-Related NASA Research and Data Analysis Programs Final Budgets \(FY2003-FY2007\)](#)
-

Planetary Science Decadal Survey

Download [Visions and Voyages for Planetary Science in the Decade 2013-2022](#) →  (9.7 MB), this document sets out priorities for which planetary missions should be undertaken in the next ten years. For links to presentations on this subject from the LPSC meeting, presentations on this subject by Jim Green, and the Decadal Survey town hall schedule across the nation see <http://solarsystem.nasa.gov/2013decadal/> → .