



Update from NASA Astrobiology Program

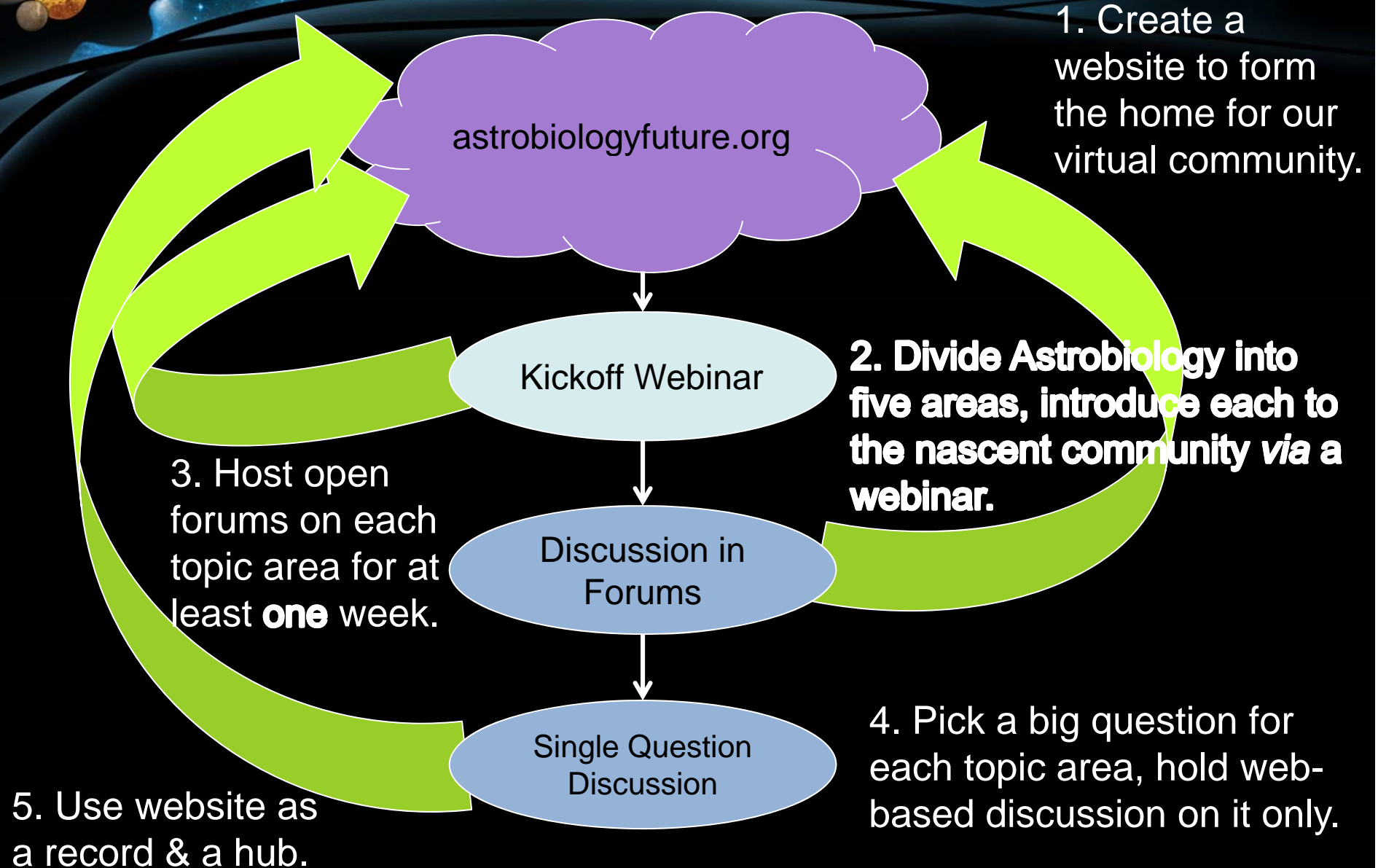
Mary Voytek
Astrobiology Senior Scientist
CAPS, Keck Center 9/4/2013



Astrobiology Roadmap Status

Astrobiology Strategic Plan

The process so far (Part 1)





astrobiologyfuture.org

598 registered members from all over the world

82 discussions

621 posts

11 user-generated groups

Discussions to date have been collegial and
(remarkably) free from trolls.

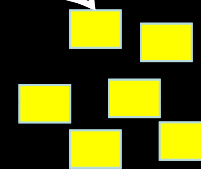
The process so far (Part 2)

Face-to-Face Workshop

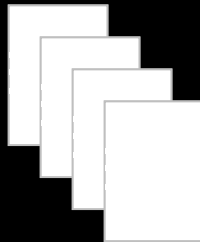
6. What talk do you want to give/hear in 10 years?



7. Put ideas on tons of Post-It Notes™



8. Participants group Post-It Notes™ into broader concepts & describe them in 1 page



9. Group 1-pagers, solicit volunteers, and write 3 page concept documents





The Face-to-Face Workshop

131 researchers were invited to participate

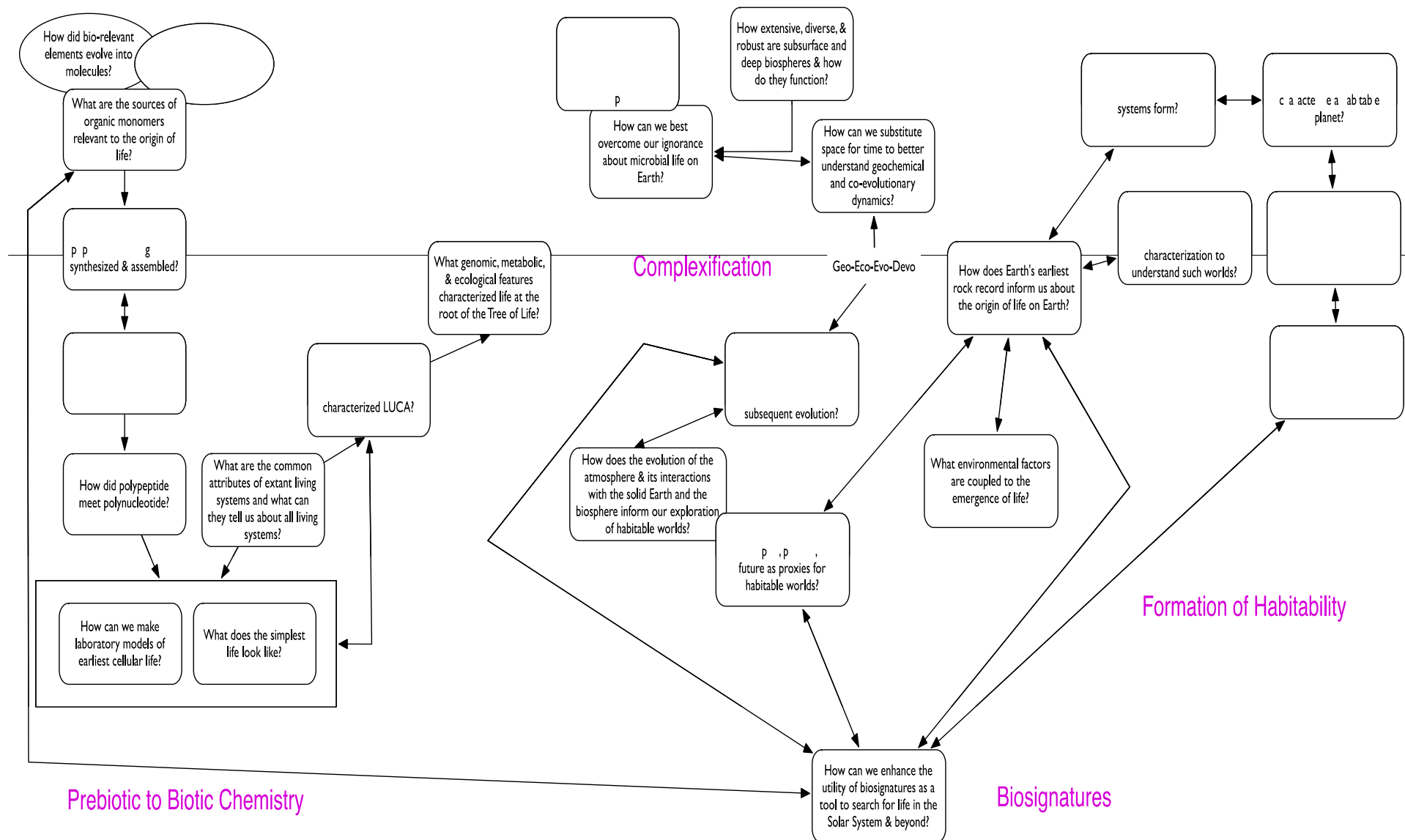
- All of the webinar leaders were invited.
- Active, serious commenters in the forums were invited.
- Other astrobiology researchers were invited.

53 researchers attended in person and 4-6 others participated virtually for the entire workshop.

21 three-page concept documents were written.



How are things connected?





What next?

The 21 concept documents will be posted on astrobiologyfuture.org and open to be read by anyone.

Each document will be the focus of an hour-long webinar.

After the webinar, the document will be opened to comments from the community.

The original writers will meet to revise/update the documents.

Another workshop will be held to integrate the documents.

A draft strategic plan will be produced and reviewed.



Schedule

Kickoff Webinar

Early Sept

Concept Paper Hangouts

2X week

In-person Integration

Feb-Mar 2014

Draft Available for Review

April 2014



Upcoming Solicitations

MatISSE 5-2/ 36 proposals selected from strong & diverse pool of proposals.

ROSES-13 released in February.

- EXOB proposals were due 14 June 2013,
 - Received 150
- ASTEP is cancelled due to lack of funding;
 - We evaluating potential changes to the solicitation in light of Mars-2020 and previous plans...
- PICASSO will be offered for 1st time Due Date Sept 13 (expect ~100).



The Upcoming CAN-7

New process for CAN-7 (see next slide).

CAN-6 selected 5 teams.

Plan on selecting 6-7 teams from CAN-7.

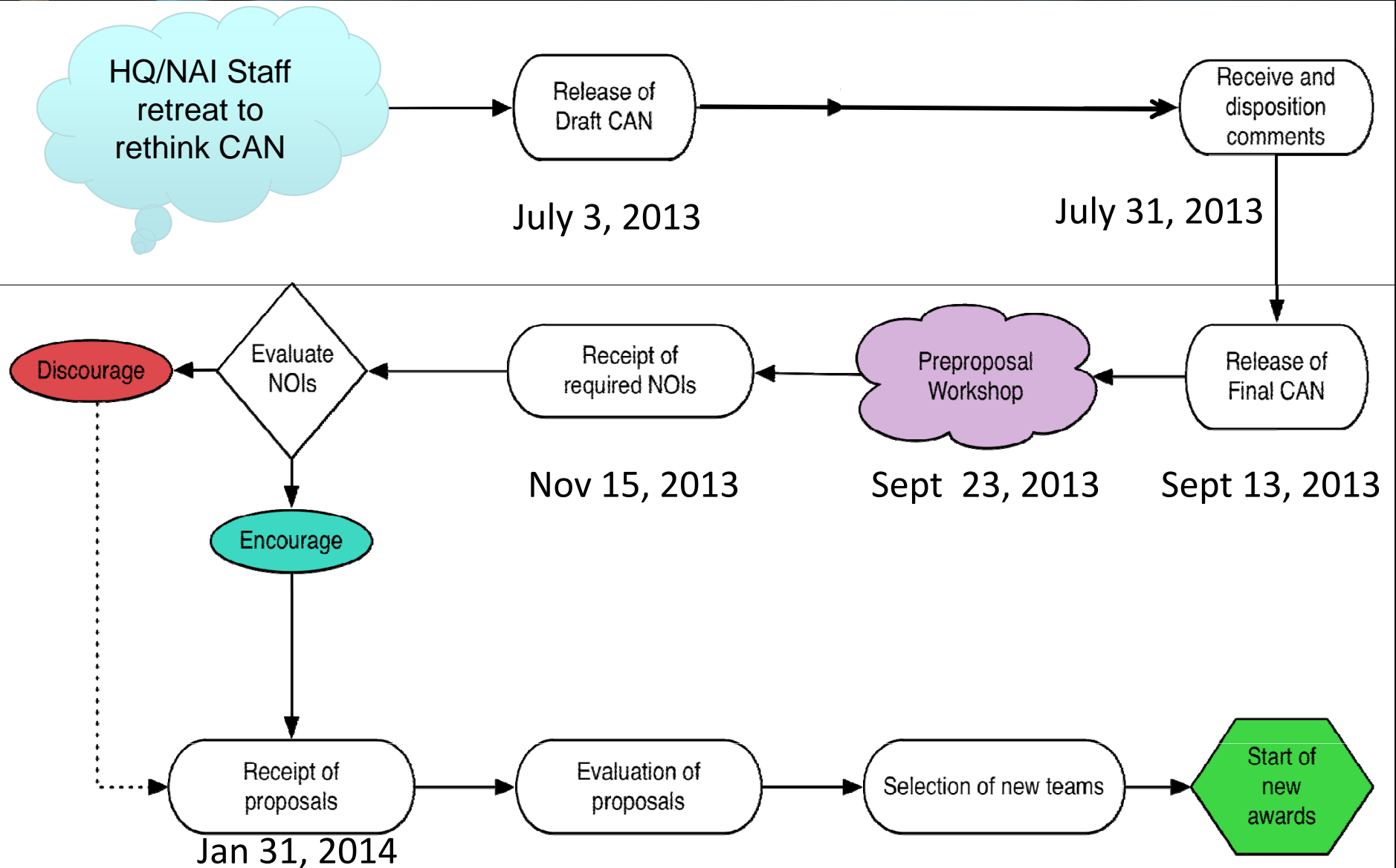
Any changes will maintain a multi-disciplinary institute but we want more focused, inter-disciplinary teams.

New requirements Data Management and sample registration

Redactions of all Salary information

E/PO proposals will be solicited from winning teams and funding mechanism TBD

CAN-7 Process





Potential Future of ASTEP

ASTEP

20-40
proposals/yr
\$7-14M/yr



MMAMA

~30 proposals/yr
<\$1M/yr

PSTAR

Planetary Science and
Technology & Analog
Research

ASTEP

Systems-level terrestrial field campaigns to address astrobiology science goals and demonstrate and validate technologies
(Mars, Icy worlds)

Developing technologies that support remote searches for, life and life-related chemistry in analog environments

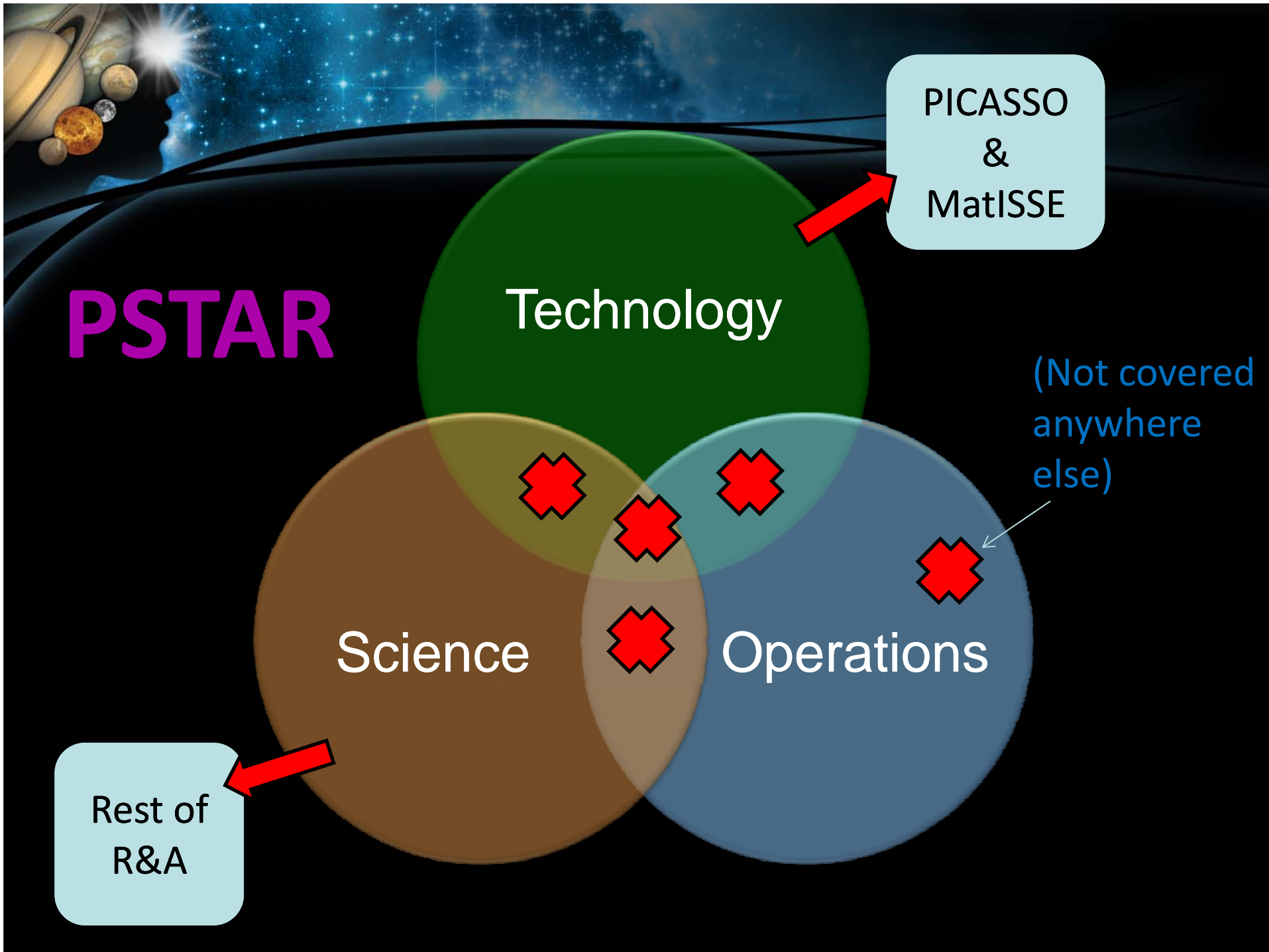
(MSL, Exo-Mars, no HEO)

MMAMA

Field testing of individual scientific experiments or validation of concepts

Con Ops including:
traverse planning, tele-robotics, sample acquisition/curation strategies, training strategies, science backroom ops and support tools

(Participation in ongoing HEO field campaigns)





Other Supported Activities

Field Camp for Engineers- With HEO

Intro to Field work

Field operations

Instruments operating in extreme environments

Field Camp for Planetary Scientists

Geology/geomorphology

geochemistry/mineralogy

instruments

Workshops by Analogue (LPSC)



FameLab Update

NASA is partnering with National Geographic and collaborating with science society meetings for “prelims”

- AGU, LPSC, Society of American Archaeology, National Geographic Explorers, AAS, AGU (again), YouTube

Finals in DC at Nat Geo in May 2014

Biosignatures





AbSciCon Update

Cancelled in 2014 will resume in 2015.

We are working the issues associated with recent rules limiting NASA's ability to support conferences.

- We're monitoring what's going on with LPSC-2014 as a model for what we'll have to do with AbSciCon

Odd years will have AbSciCON

Even years greater presence at LPSC



Any we all Martians?