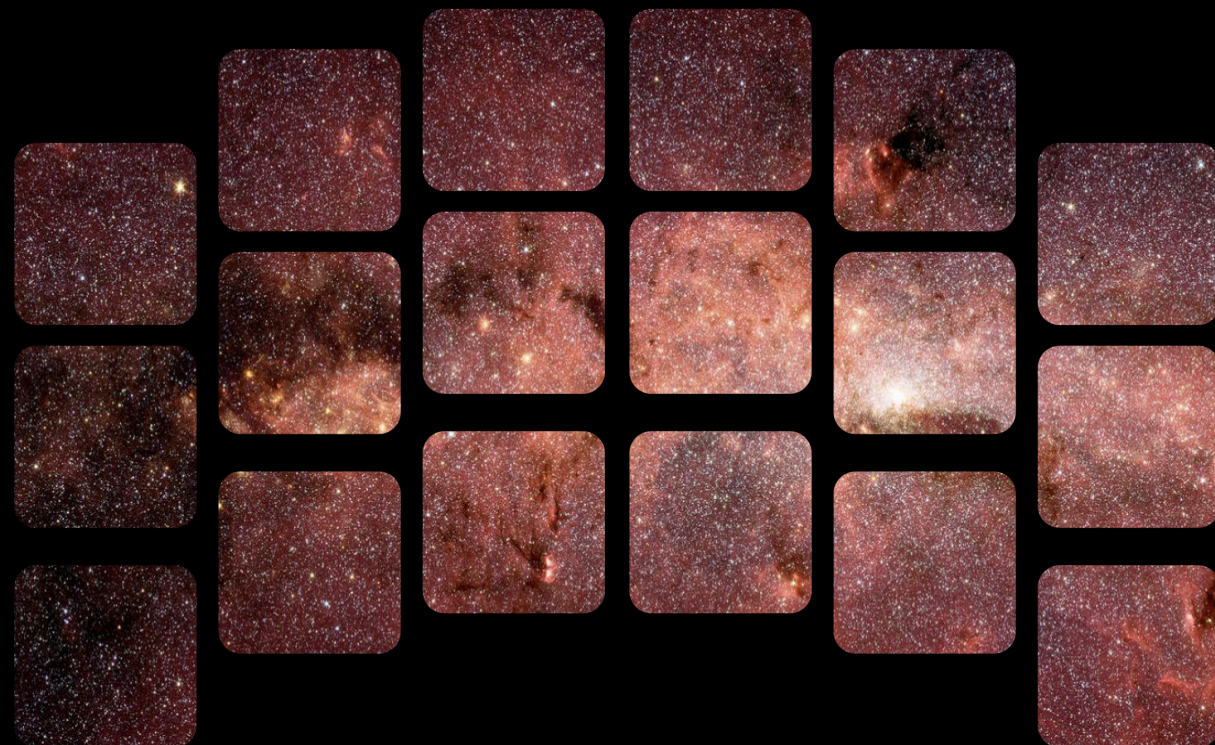


General Astrophysics Surveys – Program Balance

R.ÖMAN



SPACE TELESCOPE

General Astrophysics Surveys – program balance

- Roman's Core Community Surveys will enable an exceptionally broad range of science
 - But won't do everything
- General Astrophysics Surveys provide flexibility to pursue additional science
 - Current baseline program allows for 30 surveys over 3 proposal cycles
 - ~2 weeks per survey if time was equally divided
- Other large ambitious survey ideas that would have broad science reach
 - Milkyway survey (on plane or in halo)
 - Snapshot survey of entire Rubin footprint
 - Etc
- **Should we explicitly set aside time for large General Astrophysics Surveys?**

General Astrophysics Surveys – number of programs

- **Larger programs leverage Roman's strengths in observing efficiency**
- **Structure of our program will encourage community cooperation to design the best surveys**
 - e.g. one program to observe 15 nearby galaxies vs 15 independent programs each observing one
- **Maximizing science reach without increasing mission scope /cost (i.e. guaranteeing more than 30 programs) will require community coordination**
 - In the meantime, the project will continue to explore ways to increase the number of programs in a cost neutral way
- **Is this a reasonable approach?**