

Exploring the Role of Health Professional Students and Trainees as Members of the Health Workforce

Session 3 of a Workshop Series: Learner Considerations

November 5, 2021

Workshop Objective: To facilitate discussions around the development of a decision tree, applicable across all the health professions, to guide health professions leaders in creating a local strategy for the role of trainees in the health system

Session Objective: To discuss learner considerations that decision-makers need to be aware of when selecting paths for the role of learners in the health system during a crisis

WELCOME	
6:30pm ET	Welcome & Introductions <ul style="list-style-type: none"> Erin Patel, Veterans Health Administration & Robert Cain, American Association of Colleges of Osteopathic Medicine, Co-chairs
6:35pm	<p>What role did you “the Learner” play during the pandemic crisis and how did that affect your view of yourself as a health professional?</p> <p>Reactions from educators/administrator partners regarding learner roles during a crisis</p> <p>Moderator: Jasmine Garland-McKinney, Planning Committee Member and Student Subgroup Liaison</p> <p>Student Volunteers</p> <p>Jessica E. Johnson, Kentucky College of Optometry, SGA President 2020-2021, Class of 2023</p> <p>First Dyad</p> <p>Alan Yee, Doctor of Pharmacy Candidate, Class of 2022, University of Pittsburgh School of Pharmacy</p> <p>Melissa A. McGivney, Associate Dean for Community Partnerships, University of Pittsburgh School of Pharmacy</p> <p>Second Dyad</p> <p>Christy-Anne Mitchell, Doctor of Nurse Practice Student, Uniformed Services University of the Health Sciences Graduate School of Nursing</p> <p>Laura A. Taylor, Program Director/Chair, Uniformed Services University of the Health Sciences Graduate School of Nursing</p> <p>Third Dyad</p> <p>Yoni Siden, University of Michigan Medical School, University of Michigan Ford School of Public Policy, M.D./M.P.P. Candidate, Class of 2022</p> <p>Maya M. Hammoud, Professor of Obstetrics and Gynecology and Learning Health Sciences, University of Michigan Medical School</p>

BREAKOUT SESSIONS

7:05pm	<p style="text-align: center;">Learners' Perspectives on Risks & Benefits of Decisions</p> <ul style="list-style-type: none"> • Risk → Mitigate risks • Benefit → Leverage benefits <p>Group 1: Learner removed from health system during a crisis</p> <ul style="list-style-type: none"> • Esha Mehta, 4th year MD/MPH Candidate, George Washington University • Scribe: Shane T. Matthew, Doctor of Physical Therapy Student <p>Group 2: Some learners are removed from health system during a crisis</p> <ul style="list-style-type: none"> • Jeremiah McGuire, CPMA/MS Student, Department of Nutritional Sciences, University of Oklahoma Health Sciences Center • Scribe: Joanne Michelle Ocampo, 3rd year DrPH, Columbia University <p>Group 3: Learners remain in the health system during a crisis</p> <ul style="list-style-type: none"> • Isa Prude, Student Optometric Physician, Nova Southeastern University - College of Optometry
7:45pm	<p>Share top risk & benefit considerations with the large group</p> <p>Moderator: Jasmine Garland-McKinney, Planning Committee Member and Student Subgroup Liaison</p> <ul style="list-style-type: none"> • Group 1 - Esha Mehta • Group 2 - Jeremiah McGuire • Group 3 - Isa Prude
8pm	Adjourn

BACKGROUND

Statement of Task:

A planning committee of the National Academies of Sciences, Engineering, and Medicine will organize and conduct a series of public workshops to explore whether students and trainees should be viewed as members of the health workforce, particularly in times of emergency as was experienced during the COVID-19 public health crisis. Topics to be explored will include issues such as:

- Identifying evidence on value-added roles for students to serve in the delivery of care and in a public health capacity
- Building greater working-learning integration for a stronger learning health system
- Balancing the role of learners as consumers (paying tuition) and not licensed providers versus members of the health workforce

The planning committee will bring together educators, students, administrators, and health professionals to share ideas, experiences, and data in an effort to discuss the role of learners during a crisis by drawing upon past experiences. The planning committee will select and invite speakers and discussants, and moderate the discussions at the workshop. Following the workshop, a proceedings of the presentations and discussions will be prepared by a designated rapporteur in accordance with institutional guidelines.

Workshop Planning Committee Members

- Robert Cain, American Association of Colleges of Osteopathic Medicine (co-chair)
- Erin Patel, Veterans Health Administration (co-chair)
- Jonathan Amiel, Columbia University
- Kenya Beard, Chamberlain University
- Jasmine Garland-McKinney, Family Solutions
- Reena Karani, Mount Sinai
- Mark Merrick, Commission on Accreditation of Athletic Training
- Casey Shillam, University of Portland
- Lisa VanHoose, University of Louisiana Monroe

Learner Subgroup:

Planning Committee Member and Student Subgroup Liaison

Jasmine Garland-McKinney, MS
Outpatient Clinical Counselor
Family Solutions
PhD, Counseling and Counselor Education
UNC Greensboro
Anticipated 2023

Student/Trainee Group of the Planning Committee

Olgert Bardhi
Medical Student
University of Florida

Jessica Johnson
Optometry Student
Class of 2023
Kentucky College of Optometry

Mitchell Kanellis
4th year Optometry Student
Chicago College of Optometry

Tiffany Mathis
Master of Social Work Student
Morgan State University

Shane T. Matthew
Doctor of Physical Therapy Student
University of Florida

Maeve McDonnell
3rd year Optometry Student
Southern California College of Optometry

Marshall B. Ketchum University

Jeremiah McGuire
2nd year Masters of Dietetics
University of Oklahoma

Esha Mehta
4th year MD/MPH Candidate
George Washington University

Joanne Michelle Ocampo
3rd year DrPH
Columbia University

Ahmed Owda
Senior Medical Student
Columbia University

Isa Prude
Student Optometric Physician
Nova Southeastern University - College of
Optometry

Yoni Siden

4th year Medical Student/
Masters of Public Policy
University of Michigan

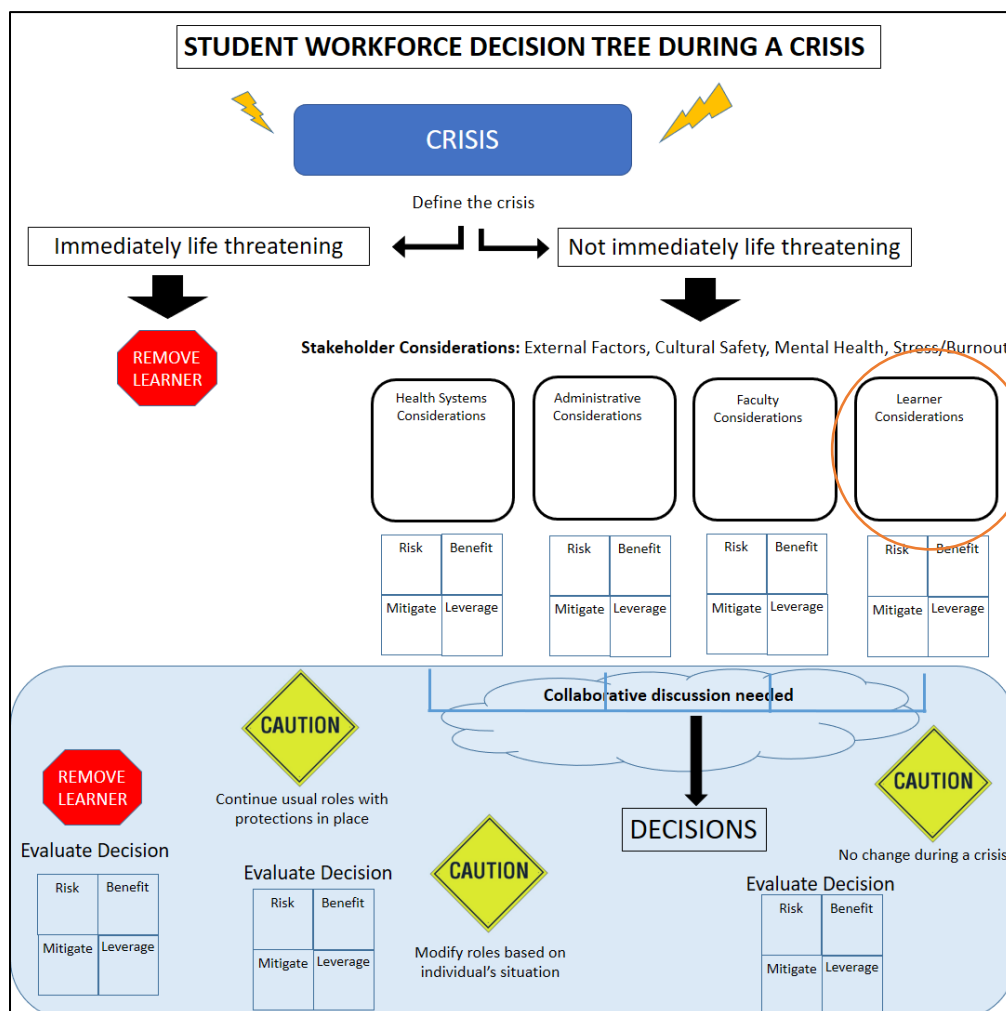
Christy-Anne Mitchell
Doctor of Nurse Practice Student
USUHS

Genna Waldman, MD
Graduate Staff

Columbia University

Alan Yee
4th year PharmD Candidate
University of Pittsburgh

Serhat Yildirim
Medical student
Ghent University



Speaker Biographies

Jasmine L. Garland McKinney was born and raised in Rocky Mount, NC. Jasmine received her Bachelor of Arts in Sociology from North Carolina State University and her Master of Science in Counselor Education from East Carolina University where she also received a graduate certificate in Substance Abuse Counseling. She is currently pursuing her PhD in Counseling and Counselor Education at the University of North Carolina at Greensboro (UNCG). Jasmine is recognized as a Licensed Clinical Mental Health Counselor Associate, Professional School Counselor, and Nationally Certified Counselor in North Carolina. Jasmine has clinical experience working with college students, children ages 11 and younger, and their families. Jasmine is passionate about decreasing mental health stigma and health disparities in historically underrepresented populations. As a 2019 National Board of Certified Counselors (NBCC) Fellow, Jasmine was an active participant in school-university-community partnerships to increase access to mental health care in rural, predominantly African American communities. Jasmine is currently recognized as an interdisciplinary fellow through the American Psychological Association (APA). Her research focuses on Black women's experiences with maternal mental health – particularly the ways in which gender racism impacts mothering, pregnancy, and childbirth.

Maya M. Hammoud, MD, MBA is the J. Robert Willson Research Professor of Obstetrics and Gynecology and Professor of Learning Health Sciences at the University of Michigan Medical School. She is the Chief of Women's Health Division, and Associate Chair for Education. Dr. Hammoud holds many leadership roles nationally. She is senior advisor for Medical Education Innovations at the American Medical Association (AMA) with a focus on health systems science and coaching. She has over 70 peer-reviewed publications and has published three books. She is the immediate past President for the Association of Professors of Gynecology and Obstetrics (APGO) and a member of the National Board of Medical Examiners' Board of Directors. Dr. Hammoud is the current Principal Investigator on a \$1.75 millions Reimagining Residency Grant from the AMA on transforming the UME to GME transition.

Dr. Hammoud completed her MD and MBA degrees and residency training at the University of Michigan. She has had many leadership roles in the past including Assistant and Associate Deans at Michigan and at Weill Cornell Medical College in Qatar. Her research is in medical education with a special focus on the use of technology in education and the role of academic coaching in learner's development. She has been teaching for over 20 years and has won many teaching and leadership awards for her accomplishments including the Clinical Kaiser-Permanente Excellence in Teaching Award, the Association of Professors of Gynecology and Obstetrics Medical Student Excellence in Teaching Award, the American Medical Association Women Physicians Section Inspiration Award, the Arab American and Chaldean Council Excellence in Health Care Award, the University of Michigan-Dearborn College of Arts, Sciences, and Letters Distinguished Service Award, the University of Michigan-Dearborn College of Arts, Sciences, and Letters 2021 Alumni Difference Maker Award, and she was named Crain's Notable Women in Health in 2020..

Melissa A. Somma McGivney, PharmD, FCCP, FAPhA is committed to advancing pharmacist-provided patient care in the community. She serves as a founding member of the Pennsylvania Pharmacist Care Network (PPCN), a Community Pharmacy Enhanced Services Network (CPESN) of over 150 community pharmacies in Pennsylvania, where she leads the research and quality improvement initiatives. Dr. McGivney also directs the PittPharmacy Community Leadership and Innovation in Practice (CLIP) Center that serves as the home to faculty, residents, fellows, students, staff, partners and alumni who are focused on advancing pharmacy practice and the health of people in our communities. She initiated the University of Pittsburgh Community Residency, and has served as Director for 27 Community Pharmacy Residents and 4 fellows in partnership with community pharmacy partner organizations. She led the development and coordinates the

NACDS Foundation Faculty Scholars Program which has engaged 31 community pharmacy faculty from 27 colleges of pharmacy nationally, and has been an invited speaker for over 60 presentations at state and national meetings. Dr. McGivney brings this passion to the classroom leading a second professional year experiential learning course partnering students with community pharmacies, and introduces patient care to our first-year students.

She has been honored as Fellow by both the American College of Clinical Pharmacy and the American Pharmacists Association. She has been recognized by the National Association of Chain Drug Stores as Community Faculty member of the year in 2011, the American Pharmacists Association Community Residency Preceptor of the year in 2012, the University of Pittsburgh Chancellor's Distinguished Teaching Award in 2015, and the Pennsylvania Pharmacists Association Excellence in Innovation Award in 2018, among other awards. Dr. McGivney was selected as a University of Pittsburgh representative to the inaugural class of the Atlantic Coast Conference (ACC) Academic Leaders Network for 2018-19. She was appointed to the American Medical Association (AMA) Health Care Professional Advisory Committee as an alternative advisor representing the Pharmacy Health Information (HIT) Collaborative for 2020-2022.

Dr. McGivney is Associate Dean for Community Partnerships and Professor of Pharmacy and Therapeutics. She received her PharmD degree from the University of Pittsburgh and completed an Ambulatory Care Residency at UPMC Presbyterian/University of Pittsburgh. She joined the PittPharmacy faculty in 2003 after serving on the faculty of Wilkes University Nesbitt School of Pharmacy and UPMC St. Margaret Family Medicine Residency Program.

Jeremiah McGuire is a 2nd year CPMA in Dietetics and 1st year MS in Nutritional Sciences student at the University of Oklahoma Health Sciences Center. He currently serves as Vice Chair on the Interdisciplinary Student Council, Nutritional Sciences Representative for the Unity Clinic Executive Committee, Treasurer for the Student Dietetic Association, and Class Representative on the Student Advisory Team. Prior to his academic pursuits, Jeremiah served on active duty in the United States Marine Corps. He holds a BS in Nutritional Sciences from the University of Oklahoma and is a Certified Personal Trainer through the American Council on Exercise. He received the College of Allied Health Outstanding First Year Student Award and Francis O. Hazzard Dietetic Scholarship during the 2020-2021 academic year. In August, Jeremiah was selected as a recipient of the Academy of Nutrition and Dietetics Foundation's 2021 Commission on Dietetic Registration Diversity Scholarship. Following the completion of his academic endeavors, Jeremiah is pursuing a professional career in state and federal nutrition policy and advocacy.

Esha Mehta is a dual MD/MPH candidate at the George Washington University School of Medicine and Health Sciences and Milken Institute School of Public Health. She has a special interest in addressing health care disparities that exist for patients and populations struggling with substance use disorders. As a 2020 fellow with the Pulitzer Center on Crisis Reporting, she is reporting on innovative harm reduction methods with a focus on the prospects of safe consumption sites for people who inject drugs in Washington, DC. Esha is in her final year of medical school and is pursuing a residency in Family Medicine.

Christy Mitchell, MSN, RN, CNOR, is a Doctor of Nursing Practice candidate in the Adult-Gerontology Clinical Nurse Specialist program with a Perioperative focus at the Daniel K. Inouye Graduate School of Nursing at Uniformed Service University. She earned a BSN from the University of San Francisco in 2008 and an MSN from Benedictine University in 2014. Christy commissioned into the United States Air Force in 2009 where she trained and worked as a labor and delivery nurse until she transitioned to the operating room in 2016. She has held a variety of positions at bases in Texas, United Kingdom, and Maryland. Christy deployed in 2012 and 2015 as a launch and recovery nurse supporting our wounded warriors. During her studies as a DNP student, she has worked to improve readiness and provide better care at military treatment facilities through her passion in process improvement and evidence-based practice.

Yoni Siden, BSW, is a dual MD/MPP candidate (2022) at the University of Michigan Medical School and Ford School of Public Policy. Prior to medicine, he was a social worker with experiences in citizen criminal justice oversight, sexual health education, community dialogue on race, and youth leadership development. He is an applicant in the 2021-22 Obstetrics and Gynecology residency match and his research currently focuses on maternal racial health disparities and the intersections between social policy and health. Yoni's publications include a book chapter on youth-adult partnerships for community change and peer-reviewed journal articles exploring student reflection during clinical simulation exercises, young men's approach to contraception, the evidence behind telehealth for prenatal care, and a forthcoming article providing strategies to reduce implicit bias in maternity care.

Laura A. Taylor, PhD, RN, ANEF, FAAN, With more than 26 years in the transplant nursing/community, and 34 years in nursing education, Dr. Taylor has earned national and international recognition as a strong leader who shapes practice, policy and education.

Dr. Taylor's scholarship integrates pioneering technology-based innovations, rigorous scientific methods, inter-professional collaboration, and focused orientation on the advancement of global transplant care and education. Dr. Taylor embodies the innovative and evidence-based approach to contemporary nursing education, practice and healthcare delivery meeting the needs of patients in increasingly complex healthcare environments.

Dr. Taylor established an educational pathway, The Guiding Initiative for Doctoral Education program (GuIDE™), and Ready to Launch are programs providing advanced practice nurses informational and problem solving opportunities regarding PhD, EdD, and DNP education. GuIDE™ and Ready to Launch are preparing nurses across civilian and federal and military healthy systems, to be competitive for admission to doctoral programs with the goal of increasing the diversity of doctorally prepared nurses.

An internist and clinical geneticist, Dr. Whelan continued both clinical care and research involvement until she left WUSTL School of Medicine. She created and ran the hereditary cancer clinic, co-ran an interdisciplinary Marfan clinic, was co-director of the Siteman Cancer Center Hereditary Cancer Research Core, and served five years on the Siteman Cancer Center Executive Committee.

Alan Yee is a 4th year student pharmacist at the University of Pittsburgh School of Pharmacy. He completed his B.S. in Biochemistry at SUNY Binghamton and a M.S. in Pharmacology at the University of Pennsylvania. His graduate work focused on the molecular mechanisms of HIV-associated neurological disorders (HAND). While moving towards a clinical focus, Alan has stayed engaged in research working for UPMC's Investigational Drug Service as an intern and working on several research projects through pharmacy school. He has also been active in the vaccine initiative through his work at UPMC. Alan is currently rotating at the American Society of Health-Systems Pharmacists, supporting the Office of Members Relations. He plans on working in the membership organization area supporting work in clinical trials.