

Center of Excellence
in Maternal
& Child Health

THE GEORGE WASHINGTON UNIVERSITY

*Maternal Health
Disparities:
The Women Behind the
Data*

NASEM Webinar Series



“Maternal Health” ”Pregnant women & Pregnant people”

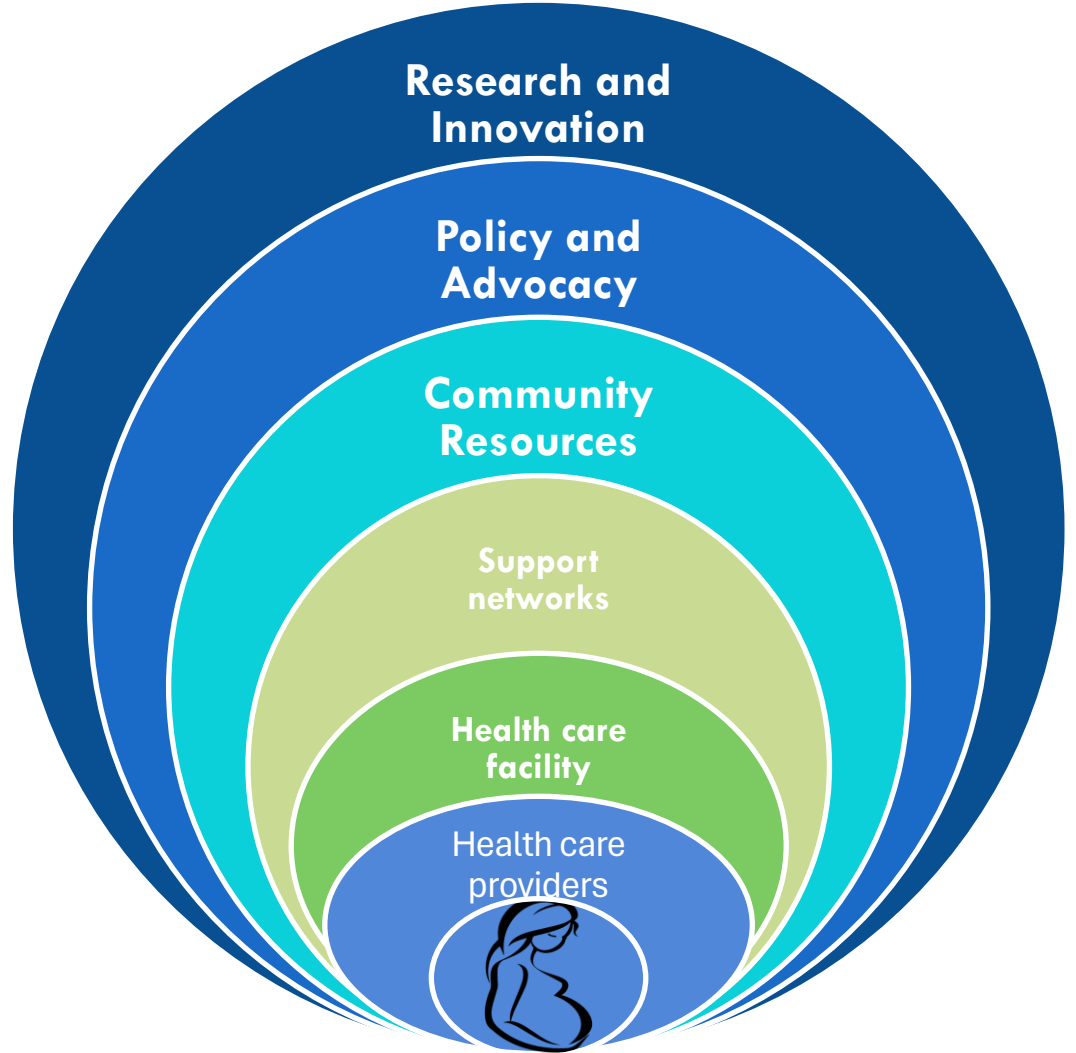
***Throughout the webinars we use the terms “maternal”, “mothers”, and “women” as shorthand for all people who get pregnant, give birth, use maternity care services, or relating to these roles. However, we recognize not all such people identify with the terms that are used, and we remain committed to using respectful, inclusive language.*



Roots of Inequity: Social and Structural Determinants of Health (SSDoH)

- SSDoH are the conditions in which people are born, grow, live, work, play, pray, and age. These circumstances are shaped by the distribution of money, power, and resources at global, national, and local levels.
- Social and structural determinants lead to health disparities or inequities—the unfair and avoidable differences in health status seen within and between different groups.

Maternal Health Ecosystem



Questions

- What are the key collaborators/partners within the maternal health care ecosystem, and how do they interact to support maternal health outcomes?
- What role do technology and innovation play in improving maternal health care delivery and outcomes?
- How can we ensure that maternal health services are culturally sensitive and responsive to the diverse needs of women from various backgrounds?
- How can community-based approaches and partnerships strengthen the maternal health care ecosystem and address disparities in care?
- What research and innovation gaps exist in our understanding of maternal health, and what areas should be prioritized for further investigation and intervention?

Thank you!

Please join us on

May 17th, 2024

*Community Based Organizations and
Innovative Models of Care*