

# Center of Excellence in Maternal & Child Health

THE GEORGE WASHINGTON UNIVERSITY

## NASEM Webinar Series.

### *Maternal Health Disparities: The Women Behind the Data*

Dr. Karen McDonnell



## Language matters

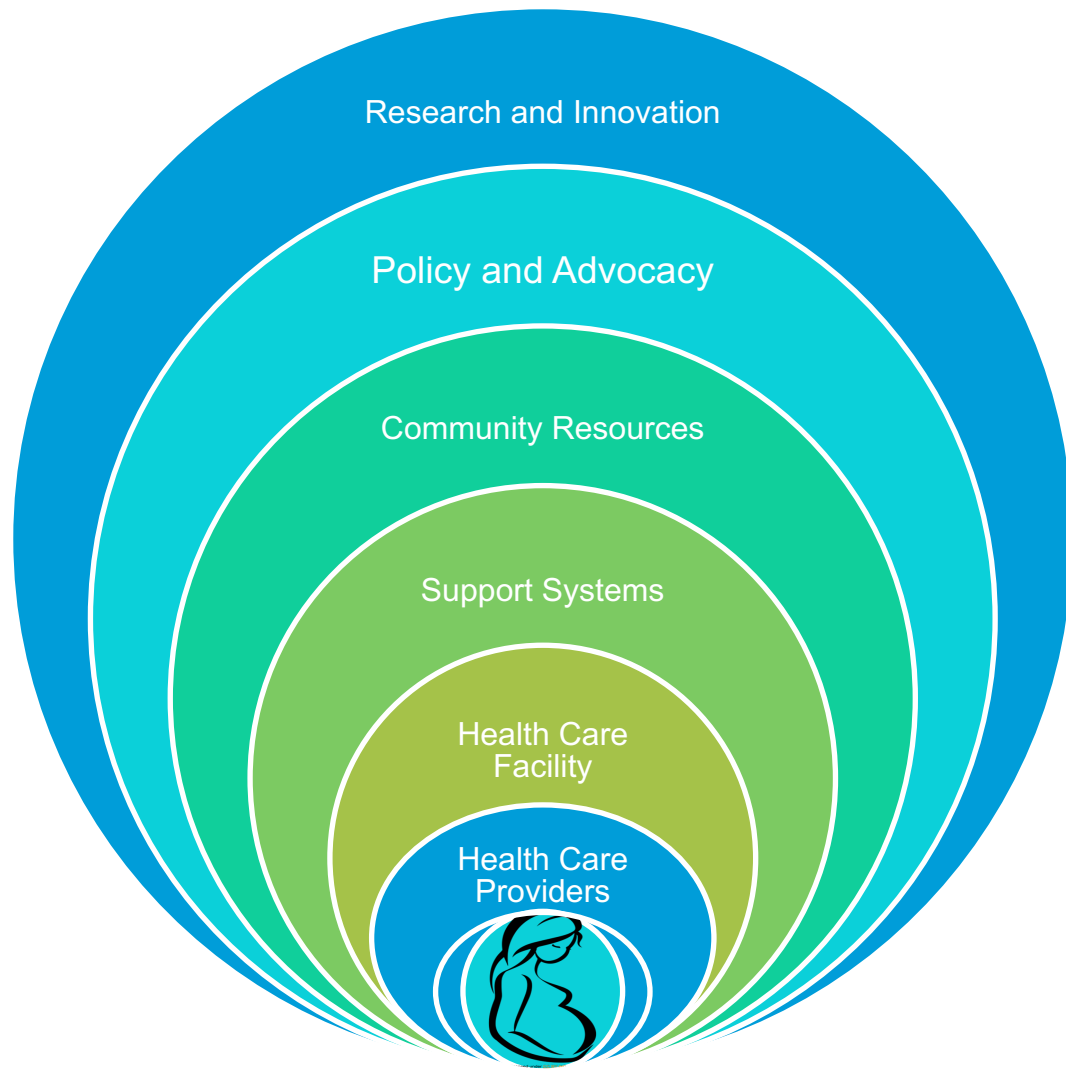
“Maternal”

”Pregnant women”

“Pregnant people”

*\*\*Throughout the webinars we use the terms “maternal”, “mothers”, “women” as shorthand for all people who get pregnant, give birth, use maternity care services, or relating to these roles. However, we recognize not all such people identify with the terms that are used, and we remain committed to using respectful, inclusive language.*

# Maternal Healthcare Ecosystem



# Question

What can health professional education do that could help address maternal health disparities?

*These can be at any level of the ecosystem, including institutions, educators, associations, policies, and research/innovation.*

# Thank you!

Please join us 12:00pm ET  
**June 14, 2024**

*Understanding micro-aggression and  
implicit bias awareness*