

FORUM ON MICROBIAL THREATS

## Understanding the Introduction of Pathogens into Humans- Preventing Patient Zero: A Workshop

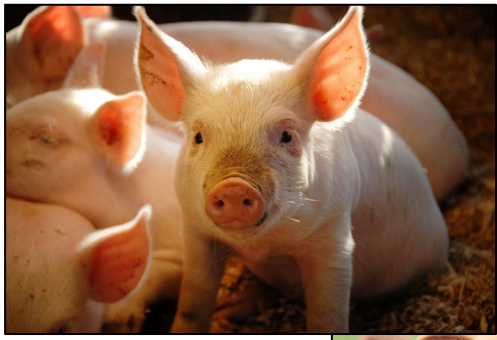
January 15-16, 2025 | 09:00–5:30pm EST | Hybrid

ATTENDEE PACKET

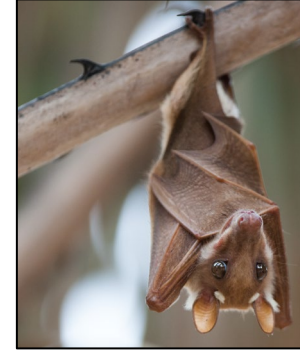


- Pathogen Introduction
- Amplification and Dissemination
- Forecasting, Surveillance and Early Warning
- Interventions for Prevention and Mitigation
- Legal, Ethical and Policy Considerations

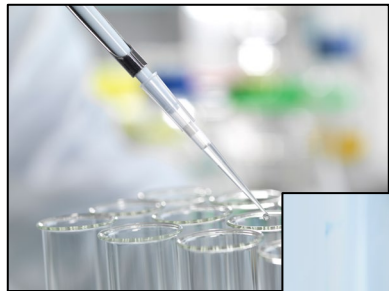
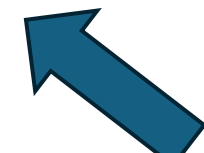
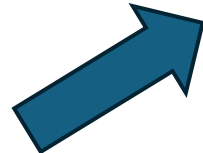
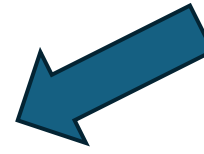
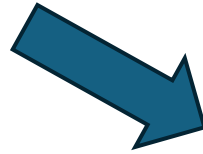
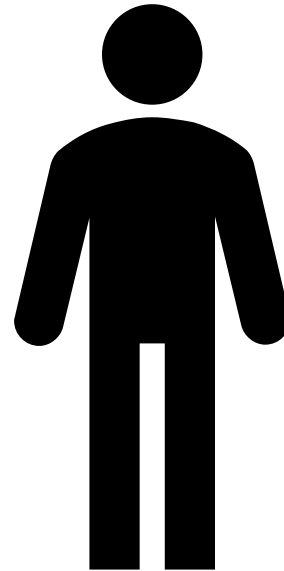
# Infection of Patient Zero



Farming and Agriculture



Wild Animals



Laboratories



Intentional Release

## PRIMARY PREVENTION

Change in behaviors and practices, regulation, forecasting



## SECONDARY PREVENTION

Surveillance and diagnosis



## EPIDEMIC CONTROL

Early focused proactive response



## PANDEMIC CONTROL

Later broad reactive response