

ROUNDTABLE ON POPULATION HEALTH IMPROVEMENT:

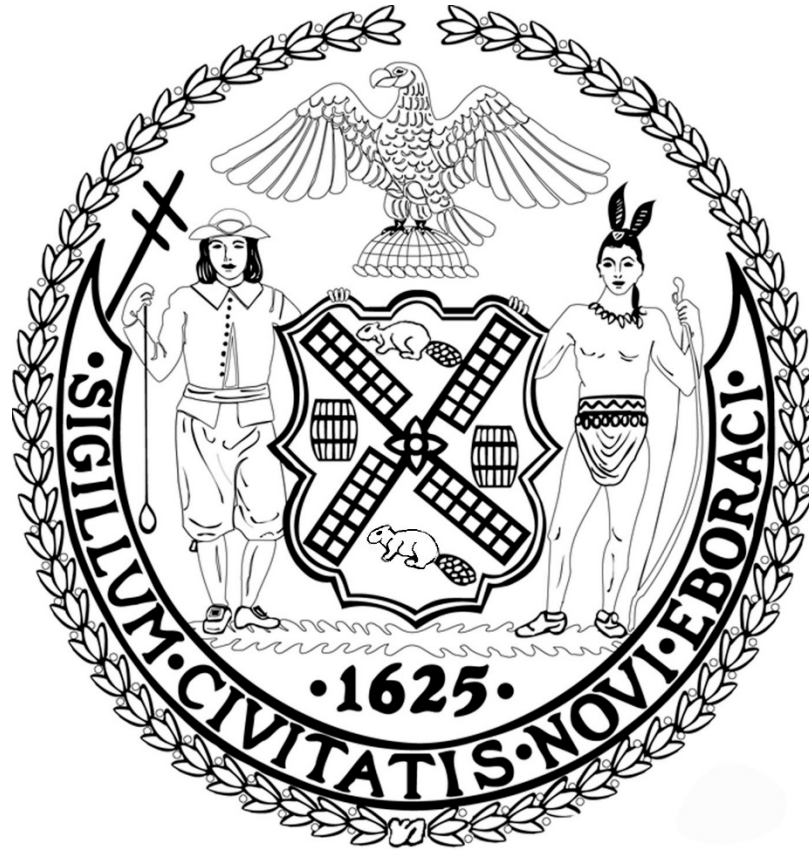
EARLY CARE AND EDUCATION: CROSS-SECTOR COLLABORATION

George L. Askew, MD, FAAP
Deputy Commissioner of Health
New York City Department of Health and Mental Hygiene
Division of Family and Child Health

Follow me on Twitter **@DrGeorgeLAskew**

Like “Our Littlest New Yorkers” on Facebook www.facebook.com/LittlestNYers

New York City Department of Health and Mental Hygiene



Division of Family and Child Health

1. Improve the health of children, women and families in New York City
2. Emphasis on reducing health disparities and advancing equity
 - Bureau of Maternal, Infant and Reproductive Health
 - Bureau of Early Intervention
 - Office of School Health
 - Early Childhood Health and Development Unit

Division of Family and Child Health Vision

Every child, woman, and family in New York City is empowered and given the opportunity to reach their full health and development potential.



DOHMH- Division of Mental Hygiene

- Socio-Emotional Learning (SEL) in Early Learn classroom sites
- Consultation focus enables capacity building
- Framework is unique to NYC
- Cross system collaboration



DOHMH- Division of Mental Hygiene

- **Socio-Emotional Learning (SEL) in Early Learn classroom sites**
- Consultation focus enables capacity building
- Framework is unique to NYC
- Cross system collaboration

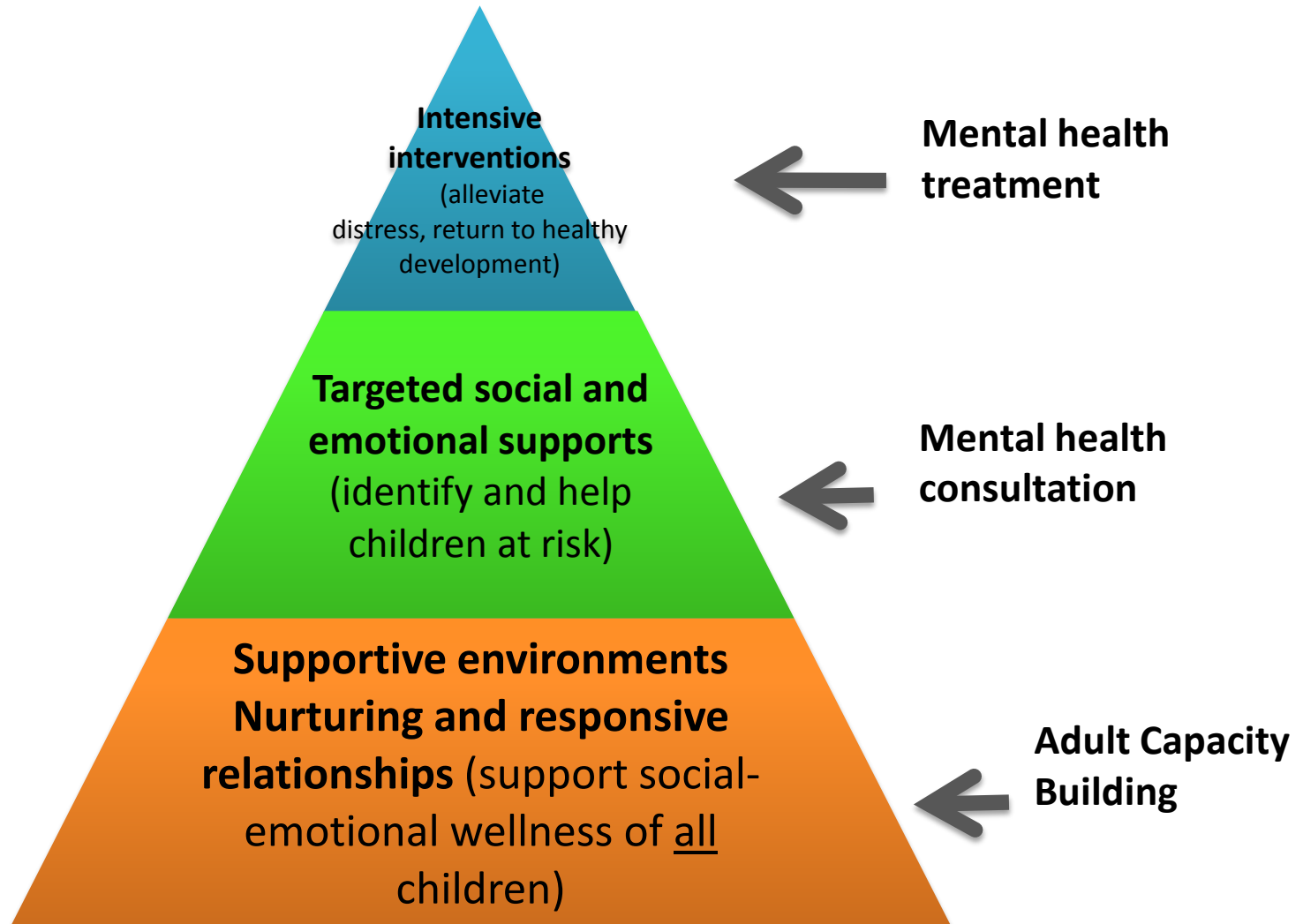


DOHMH- Division of Mental Hygiene

- **Socio-Emotional Learning (SEL) in Early Learn classroom sites**
 - **Original model focused on mental health treatment and referrals**
 - **Transitioned into mental health consultancy services**
- **Consultation focus enables capacity building**
- Framework is unique to NYC
- Cross system collaboration



Public Health Approach to Early Childhood Mental Health

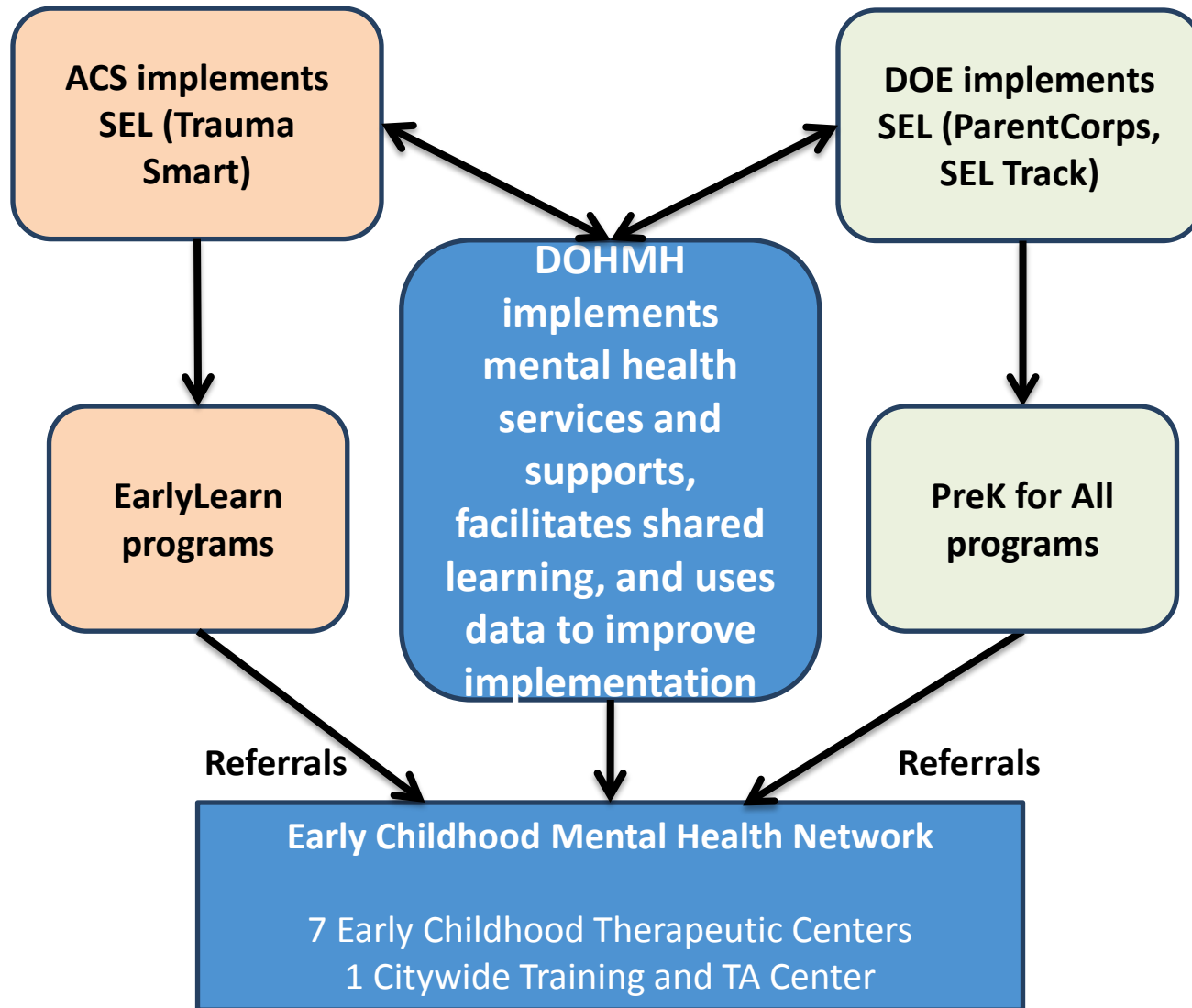


DOHMH- Division of Mental Hygiene

- Socio-Emotional Learning (SEL) in Early Learn classroom sites
 - Original model focused on mental health treatment and referrals
 - Transitioned into mental health consultancy services
- Consultation focus enables capacity building
- **Framework is unique to NYC**
- **Cross system collaboration**



ThriveNYC Social-Emotional Learning (SEL) Initiative



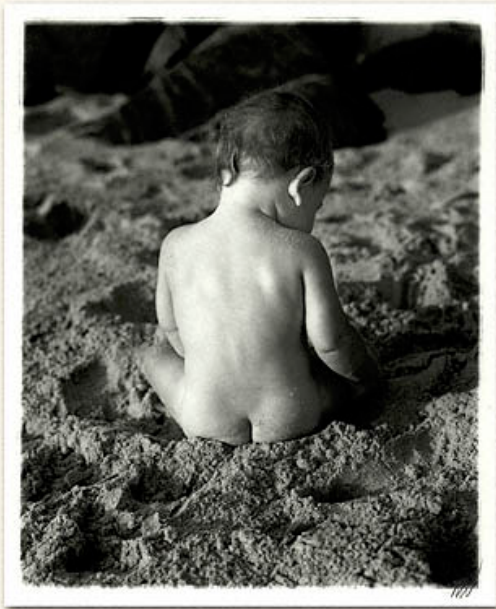
Mental Health Consultation

- Accelerators
- Challenges
 - Sustainability
 - Dosage
 - Reach
- Community Impact

Other ECE Focused Initiatives at DOHMH

- Early Intervention – Health Code Amendment
- Oral Health
- Division of Prevention and Primary Care – Nutrition, Healthy Eating, and Physical Activity

The End!



George L. Askew, MD, FAAP
Deputy Commissioner,
Division of Family and Child Health
New York City Department of Health and
Mental Hygiene

Follow me on Twitter @DrGeorgeLAskew
Like “Our Littlest New Yorkers” on Facebook
www.facebook.com/LittlestNYers