



# NASEM Meeting

## *COVID-19: Disaster Preparedness and Vulnerable Populations*

Nicolette Louissaint, PhD, MBA  
Executive Director, Healthcare Ready

June 17, 2021



# Why We Exist

**Mission:** Healthcare Ready leverages unique relationships with government, nonprofit and medical supply chains to build and enhance the resilience of communities before, during and after disasters.

## Hurricane Katrina



## Lessons Learned

- Protecting public health after a disaster requires continued access to essential medicines
- Better coordination & communication between sectors was needed
- A forum for resolving issues in real-time was needed

## Call to Action

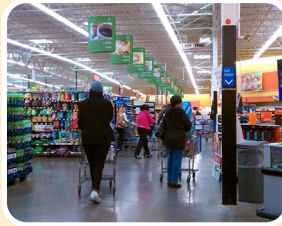
Rx Response (now Healthcare Ready) was built as a critical new asset to help ensure the continued flow of medicine to patients during:

- Severe natural disaster
- Large-scale terrorist attack
- Pandemic or disease outbreak

# Disasters don't create inequities and vulnerabilities, they expose them



Disparities  
Exposed  
by  
Disasters



Exposure  
Increased



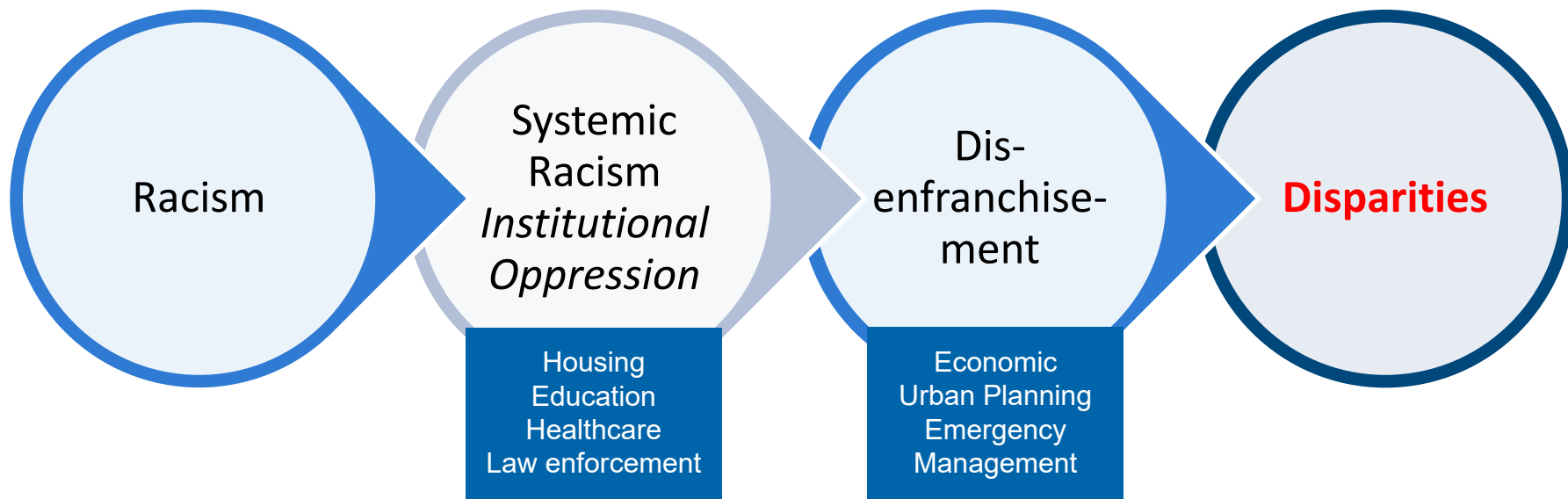
Medical  
Fragility  
Increased

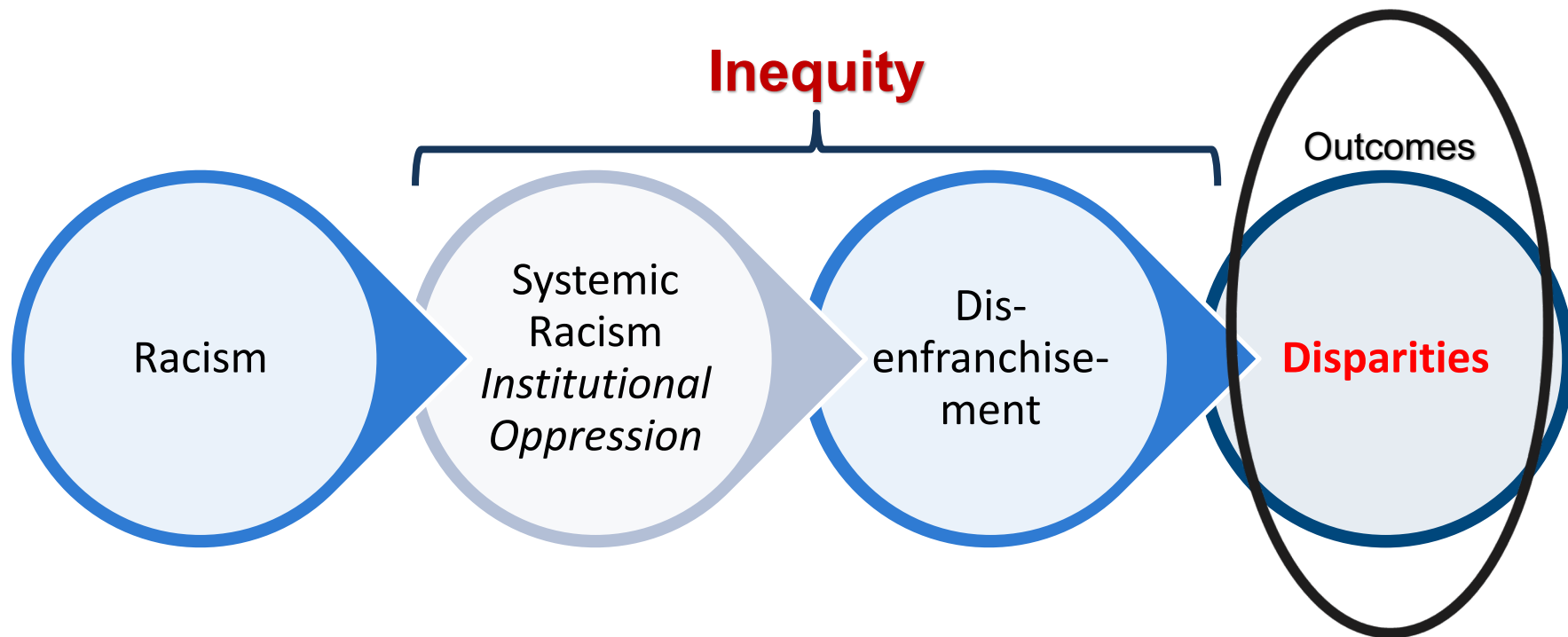


Mis-  
information



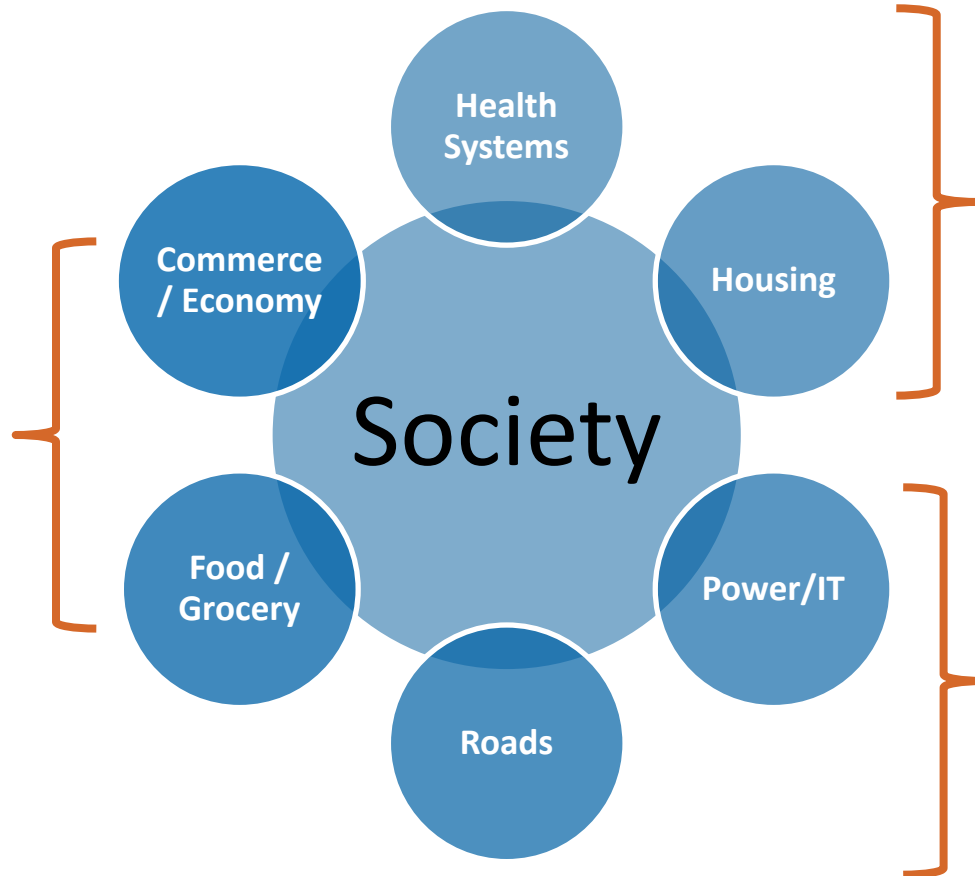
Fear &  
Uncertainty





# Emergency Management is Built to Uphold the System

**Existing** policies on business, commerce, and local/state relationships with the retail sector



**Existing** policies on housing (urban planning), public health, and healthcare access

**Existing** plans on physical infrastructure, broadband access, flood mitigation

## Health Systems

- Hospitals
- Networked Clinics
- Hospice and palliative care

## Ancillary care

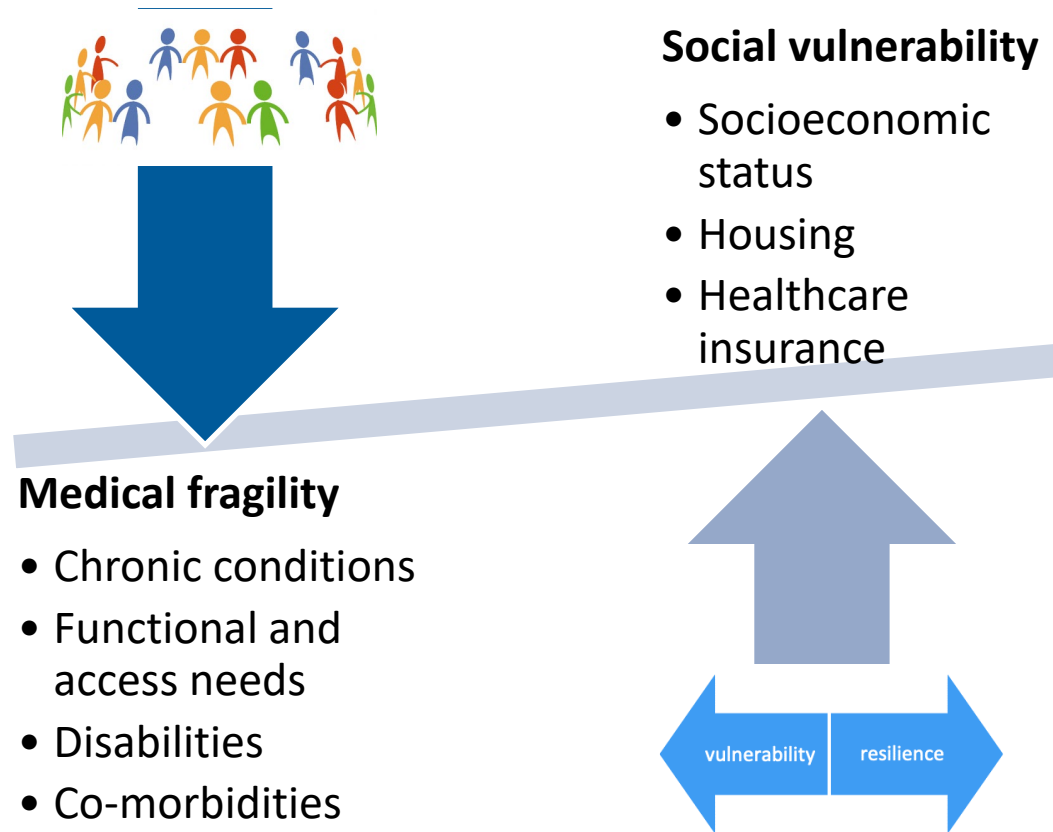
- Dialysis centers
- Pharmacies
- Urgent care centers
- Long-term care

## Public Health

- Public health departments
- Public health labs

## Supportive systems

- Clinical labs
- Medical distribution
- Health IT





# What's Next?



## Controlling Transmission

Reducing risk

Educating on newest information on COVID-19

Managing mistrust and skepticism

## Equitable Vaccination

Allocation

Administration

Vaccination opportunities

## Equitable Recovery

Individual/household assistance

Community-level support – especially for historically underserved

Community-level support – recovery from natural disasters

## Cultural

- Evidence-based
- Historically framed
- Rooted in an understanding of systemic disenfranchisement

## Systemic

- Framework for SLTTs
- Partnerships with planning and sustainability departments
- Role of government and existing systems

## Individual

- Representation
- Inclusive environment
- Structures for support and resolution

[www.HealthcareReady.org](http://www.HealthcareReady.org)

Response-related questions or assistance: [Alerts@HealthcareReady.org](mailto:Alerts@HealthcareReady.org)

General outreach to Healthcare Ready: [ContactUs@HealthcareReady.org](mailto:ContactUs@HealthcareReady.org)

Hotline: 1-866-247-2694

COVID-19 Emergency Page: <http://www.healthcareready.org/covid19>

Sign up for Healthcare Ready's regular Situation Report:

<http://www.healthcareready.org/contact-us>

Follow @HC\_Ready on *Twitter*, Healthcare Ready on *Facebook*

