



WEBINAR

COMING TOGETHER TO ADDRESS COVID-19: A COMMUNITY'S EXPERIENCE

June 18, 2020



**And
Community Partners**

For more information visit: www.mihia.org



Agenda

Who and Where We Are

Covid-19 Response

PPE

Mask Makers

Local Manufacturing

Flood Response

THRIVE Portfolio Phase 2

Summary



WEBINAR

**COMING TOGETHER TO ADDRESS
COVID-19: A COMMUNITY'S
EXPERIENCE**

Speakers



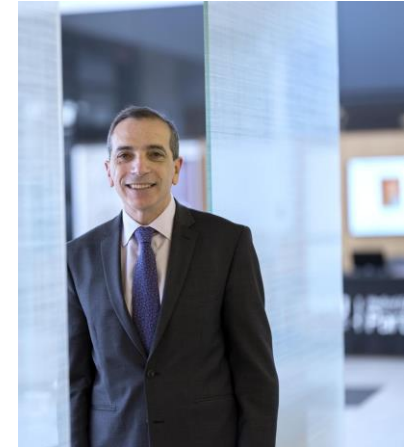
Business Sector:
Rebecca Bentley,
Vice President,
Global Public Affairs - Dow

Cathy Baase, MD
Board Chair Michigan Health
Improvement Alliance,
THRIVE Senior Fellow



Higher Education:
J.J. Boehm, Interim
Executive Director of
University Communications
Saginaw Valley State University

Healthcare Systems:
Christopher Vieau;
Director, Supply Chain Management
MidMichigan Health

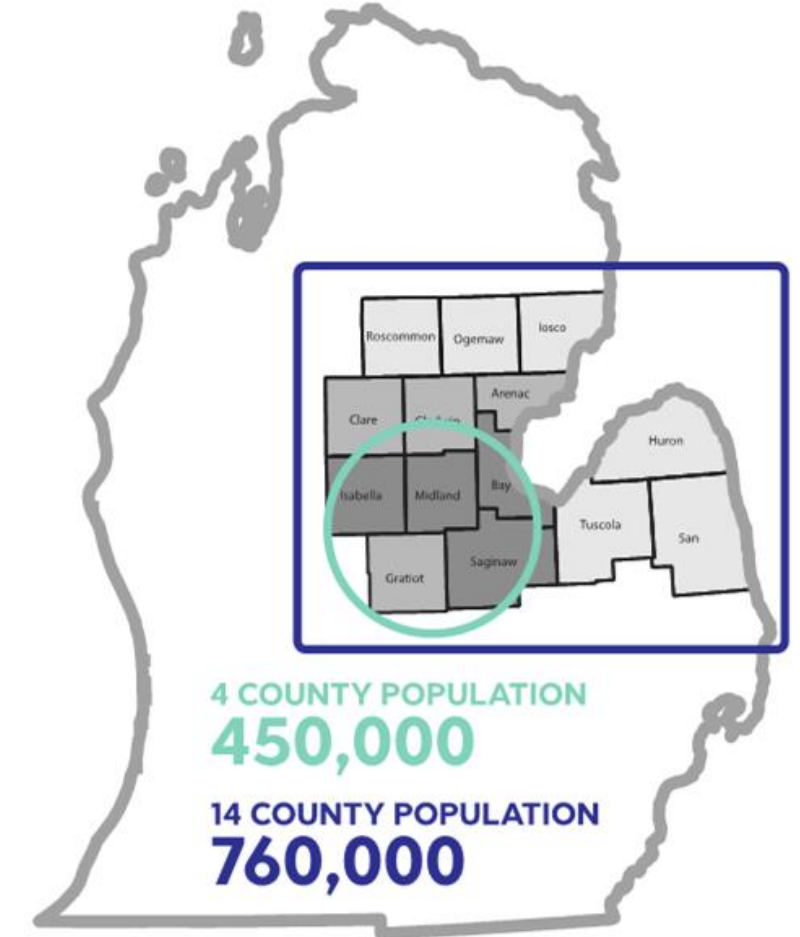


Physician:
George E. Kikano, MD;
Vice President for Health Affairs,
Central Michigan University and
Dean, Central Michigan
University College of Medicine

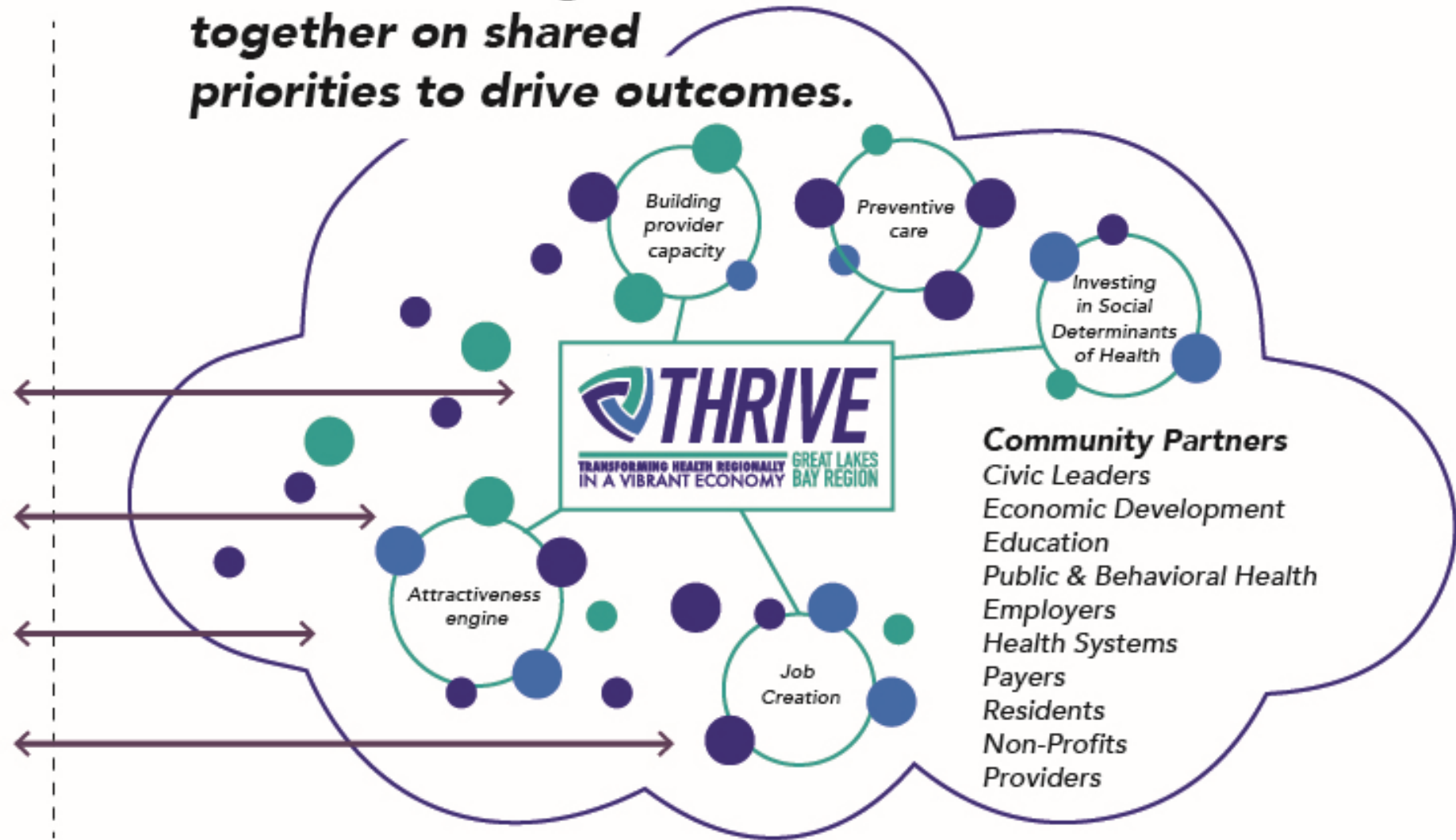
Our Region: Strong Collaborators

Michigan Health Improvement Alliance - est. 2007

Multi-sector backbone organization



THRIVE: working together on shared priorities to drive outcomes.



Partners for THRIVE Phase 1 2019-2020



Extraordinary care for every generation.



OUR PATIENTS



The Axia Institute:
Delivering Value Chain Solutions®
MICHIGAN STATE UNIVERSITY



UnitedHealthcare®



Shaping the Future
Through Education
**Gratiot
Isabella
RESD**



**Ascension
St. Mary's**



COUNTY OF
MIDLAND
MICHIGAN

VA



U.S. Department of Veterans Affairs

Veterans Health Administration
Aleda E. Lutz Medical Center



Bay County
HEALTH Department



MICHIGAN HEALTH INFORMATION NETWORK
SHARED SERVICES



SAGINAW COUNTY
COMMUNITY MENTAL
HEALTH AUTHORITY



Saginaw County

**SAGINAW VALLEY
STATE UNIVERSITY.**



**THE
ROCK**
CENTER FOR YOUTH DEVELOPMENT

TEN
recovery network
Real. Hope. Now.



HEALTHSOURCE
Saginaw
Leading the way to recovery

McLaren
BAY REGION

M
MidMichigan Health
UNIVERSITY OF MICHIGAN HEALTH SYSTEM



RECOVERY ALLIANCE

**Saginaw County
HEALTH
DEPARTMENT**



MIDLAND COUNTY
ESA
EDUCATIONAL
SERVICE AGENCY

CMU College of
CENTRAL MICHIGAN
UNIVERSITY Medicine



CMU
CENTRAL MICHIGAN
UNIVERSITY
Interdisciplinary
Center for Community
Health & Wellness



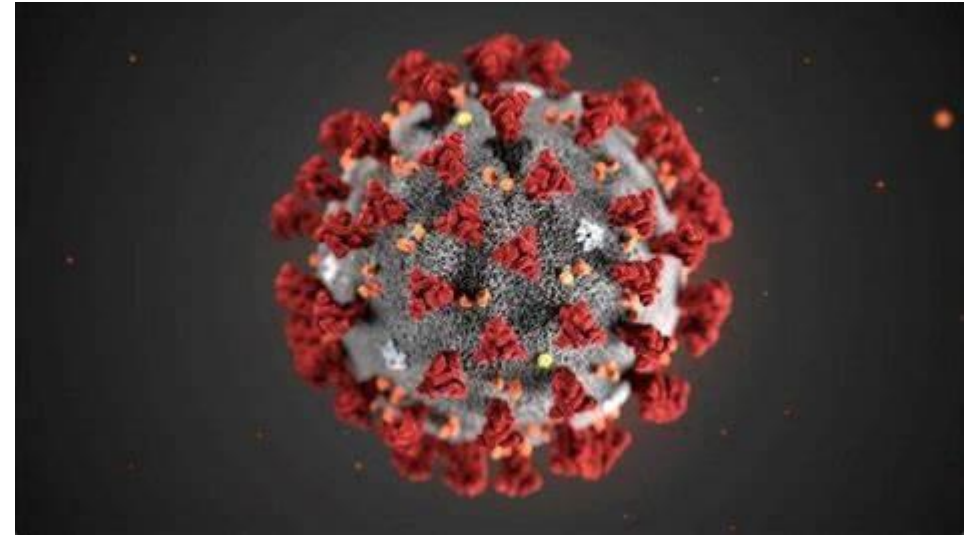
MiHIA
Michigan Health Improvement Alliance
Collectively
Impacting Health

For more information visit: www.mihia.org



The Story Begins - March 10th - 15th

- Concerns
- Role of backbone
- Sorting roles then action
- Assessing assets
- Preparing for surge
- Rules for distribution



PPE and Supply Shortages - March through June 2020

- List of needs - Face Shields, Masks, Isolation Gowns, Hand Sanitizer, testing swabs, Viral Transport Material, Body Bags, Other specific health system requests. (later - thermometers, reagents, etc.)
- Widespread call to action
- Secure central location and rural county options
- Sort, inventory, manage distribution



Local Mask Making

- The “sewers”
- Pattern & instructions
- Fabric & supplies
- Drop-off points & Volunteer pickups
- Distributed to organizations through County Emergency Coordinators
- Proper wearing
- Disclosure

HOW TO MAKE A FACE MASK

We are welcoming fabric masks from our community as we prepare for COVID-19. Orders for standard/disposable masks are on long back-orders, due to both demand and supply chain issues. Other hospitals across the country are reporting the same supply concerns.

According to the CDC, fabric masks are a crisis response option when other supplies have been exhausted. “Prior to modern disposable masks, washable fabric masks were standard use for hospitals,” said Dawn Rogers, MSN, RN, FNP-C, Patient Safety & Infection Prevention Office. “We will be able to sterilize these masks and use them repeatedly as needed. While it’s less than ideal, we want to do our best to protect our staff and patients during this pandemic.”

WHAT YOU NEED

- Basic sewing supplies
- Suggested Fabric: Tightly woven cotton or viscose/rayon
- Elastic or about 4 feet of ribbon cut in 4 equal parts

ADDITIONAL SUGGESTIONS:

- Ties or elastic can be used to fit over the ears or back of the head.
- Add a pipe cleaner, twist tie or any thin metal at the top of the nose and sew in between the seam allowance space on the inside of the mask. This is so it can best fit over the nose.
- The top could be left open for 2 - 3 inches between the front and inside materials. This would allow for an insert of filtering material to be placed inside for more protection against small molecules like this virus.

FABRIC OPTIONS

Suggested Fabric: Tightly woven cotton or viscose/rayon

The goal of our mask is to stop droplets. So you want to go for something that filters those out. Then again, you need to be able to breathe through your mask, so we want fabric that breathes, without letting droplets through. In addition, we want the inside to be comfortable on our skin. So here I’d suggest a tightly woven cotton or viscose/rayon.

Please remember that both women and men in a variety of roles may wear these masks.

When your masks are complete, please email Tina Swanton t.swanton@mihia.org to arrange pickup/delivery. (We will do our best to coordinate and keep all parties safe.)

Collected masks will be immediately sent to laundry/processing to be prepared for use.

The pattern is courtesy of: <https://freeseewing.org/>

Link to complete instructions: <https://freeseewing.org/docs/patterns/fu/instructions/>

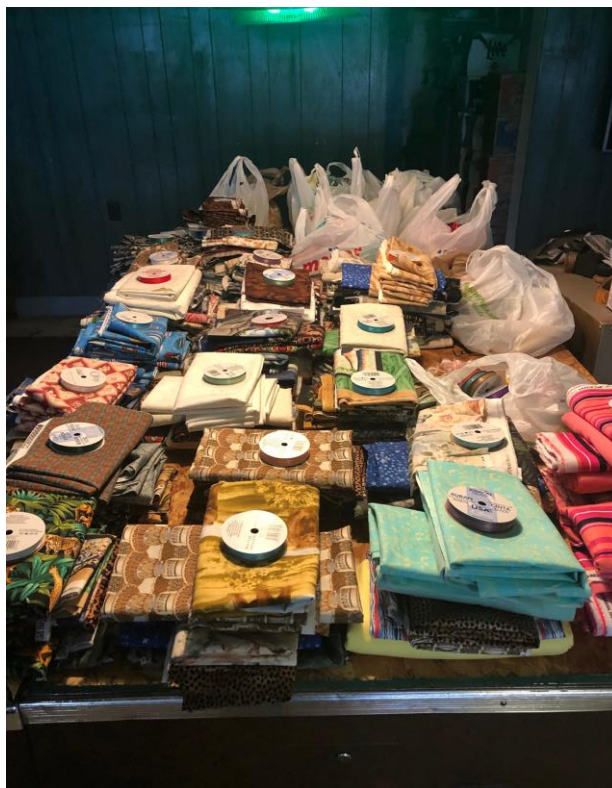


For more information visit: www.mihia.org 

For more information visit: www.mihia.org



Tens of Thousands of Homemade Masks Distributed



Take 5 to Care Drive-Up **MASK GIVEAWAY**

Wednesday, May 13th from 5-7pm


- HERITAGE HIGH SCHOOL
- ST. CHARLES HIGH SCHOOL
- DOW EVENT CENTER
- CLAYTOR HEAD START



<https://saginawfoundation.thankyou4caring.org/relief>

Coordinated with Saginaw Community Foundation
to distribute an additional 30,000 masks regionally
to Citizens & Non-essential Workers

Addressing Gaps - Manufacturing

- Continuous dialogue 
- PPE
- Specs - health systems
- Asset mapping - 3D printing, labs, manufacturing technology/ association
- Prototyping
- Production
- Catalog
- COVID19 Testing
 - BSL 2 labs, reagent inventory, PCR assets

- Healthcare System Supply Chain Managers
- Health Departments
- Universities
- Regional Emergency Coordinators
- Manufacturing/ technology associations
- Community Foundations
- Businesses

Coordination of Manufactured PPE Goods

3D printing through multiple local universities & businesses



SAGINAW VALLEY
STATE UNIVERSITY

CMU
CENTRAL MICHIGAN
UNIVERSITY

nexteer
AUTOMOTIVE



For more information visit: www.mihia.org



Sourcing and Manufacture: A Catalog Emerges

Sample Catalog entry

Fabric Secondary Masks

3ply Fabric Masks with Pocket cost \$1.30 ea

Exterior: Ripstop Waterproof

Interior Layer: Cotton Duct / (Pocket between Cotton Duck and Microfiber)

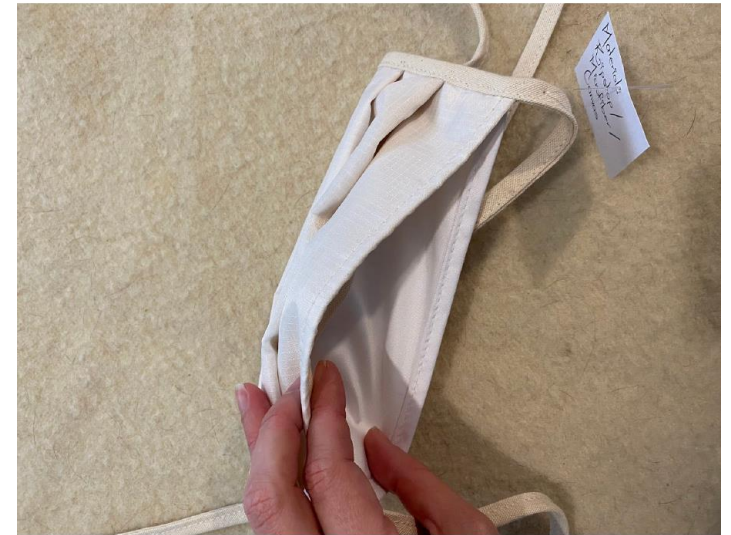
Interior Layer Against Face: Microfiber Layer

Can ship 2500 - 5000 tomorrow upon order received

10k -20k can be shipped everyday after

CONTACT: Jim Martin | Numo Manufacturing

Ph: 972.962.5400 ex: 5839 E: jim@kolder.com



Product Options - April 27 edition 9 Options for Face Shields



Ponder Industrial (Bay City)

Waterjet Headband, die cut disposable plastic tear off shields

Perfect fit, easy to sanitize and reuse

\$7 headpiece, \$.90 face shield to reuse or disposable

Jeremy 989-391-4575 - jjc@ponderindustrial.com



- Durable
- Set off the face
- Adequate room for N95 mask, goggles & glasses
- Room for breathing
- Elastic band



- Rivet & staple options
- Sturdy
- Foam pad for head
- Better comfort
- Not flat or flimsy



- Protective peel away film on inner and outer surfaces
- Full facial coverage
- Unique design allows mask to lay perfectly vertical to protect entire surface of mask

Chris Moultrup - 3 RIVERS combined with Arnold Center



Vantage Plastics (Standish)

Coordination of Manufactured PPE Goods

Worked with multiple local manufacturers during prototyping process to get approvals through local Health Systems before production began



Hand Sanitizer

- Old Town Distillery and SVSU
- Dow - 400 Gallons per week
- Delivered on pallets by national guard
- Allocated by MiHIA staff and volunteers



SAFETY DATA SHEET THE DOW CHEMICAL COMPANY

Product name: Alcohol Antiseptic 80%

Issue Date: 26.03.2020
Print Date: 26.03.2020

RESEARCH SAMPLE.

THE DOW CHEMICAL COMPANY encourages and expects you to read and understand the entire (M)SDS, as there is important information throughout the document. We expect you to follow the precautions identified in this document unless your use conditions would necessitate other appropriate methods or actions.

1. IDENTIFICATION

Product name: Alcohol Antiseptic 80%

Recommended use of the chemical and restrictions on use
Identified uses: Research sample.

COMPANY IDENTIFICATION
THE DOW CHEMICAL COMPANY
2211 H.H. DOW WAY
MIDLAND MI 48674
UNITED STATES

Customer Information Number: 800-258-2436
SDSQuestion@dow.com

EMERGENCY TELEPHONE NUMBER
24-Hour Emergency Contact: CHEMTREC +1 800-424-9300
Local Emergency Contact: 800-424-9300



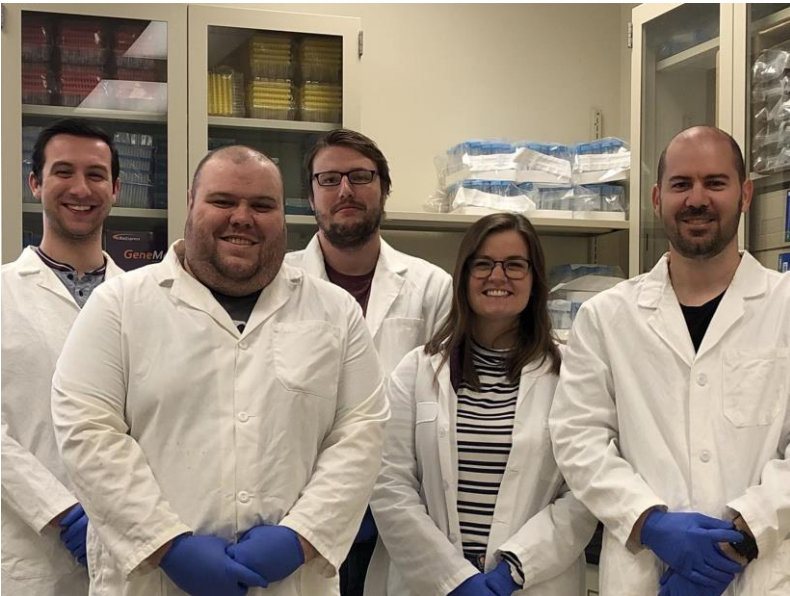
Sourcing Continued

- Identified new solutions
- Sourcing beyond regional manufacturing



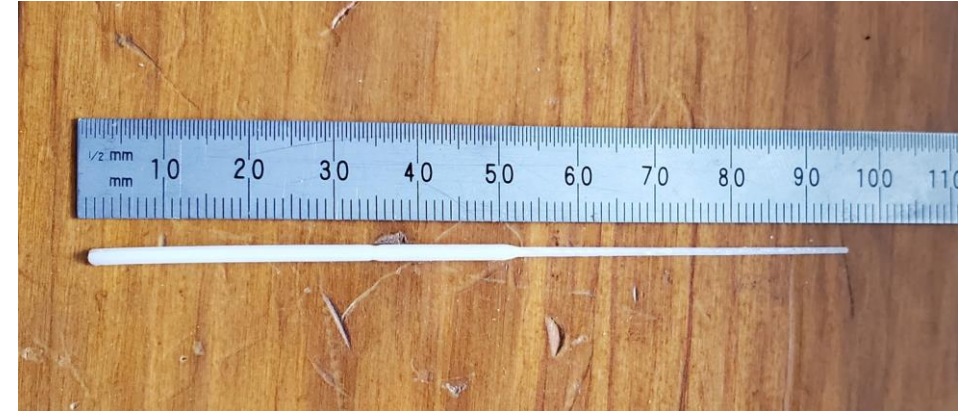
Helmet Oxygen Hood

Production of Viral Transport Media



Testing - sample collection

From 3D printing to many prototypes and then high volume production



Essential to Non-Essential Business Needs

As phased re-opening began, non-essential businesses sought support



Saginaw Valley State University responded quickly to support its community during the pandemic. We are a community-engaged university, as designated by the Carnegie Foundation. Only 7% of U.S. colleges/universities so designated.



SVSU partnered with MiHIA to use its athletic facility, the Ryder Center, as a storage depot for medical supplies and equipment.



SVSU partnered with Old Town Distillery in Saginaw to produce hand sanitizer, using SVSU facilities and expertise.



SVSU's Project Echo adapted to provide more tele-health services for those suffering from mental health and/or substance use disorders and who could not receive care in person.



SVSU graduates are in key positions throughout the region as doctors, nurses, engineers, and other “front line” responders to the COVID-19 pandemic.



SVSU has longstanding relationships with public health departments in the region. Drawing upon those relationships, and SVSU's expertise and equipment, the university is testing for the presence of COVID-19 in wastewater. This method may detect a spike in cases in a community before it would be seen through conventional testing.

View from Health System



- Fear of the Unknown
- Community Collaboration



View from Health System

- **Main Initial Need: Hand Sanitizer**
 - Weekly usage 43 gallons
 - Needs fulfilled between Old Town Distillery, SVSU & Dow
- **Importing PPE supplies**
 - Masks normal cost .05, COVID19 average market rate \$1.00
 - Utilized Dow resources to supplement our lack of knowledge, expertise and contacts
- **Using PAPR respirators**
 - Dow/Whirlpool Collaboration
 - Donated 200 units



View from Health System

Struggle with Testing supplies

Secured swabs from Non traditional source

Prototyping Process



Secured supply of Viral Transport Media



Mid-Michigan Flooding + COVID19



Health System supplies in vacant retail now

Regional Flood

Sunday, May 17, 2020 - Rain
Tuesday, May 19 Dam Failure

- Up to 7 inches of rain in Midland, Saginaw and surrounding counties damaged homes and property
- > 10,000 people evacuated
- Destroyed one power dam and severely damaged another
- 150 homes destroyed and 790 had major damage
- Only 8% flood insurance



Midland failed dams, floods caused \$200M in damages to 2,500 buildings

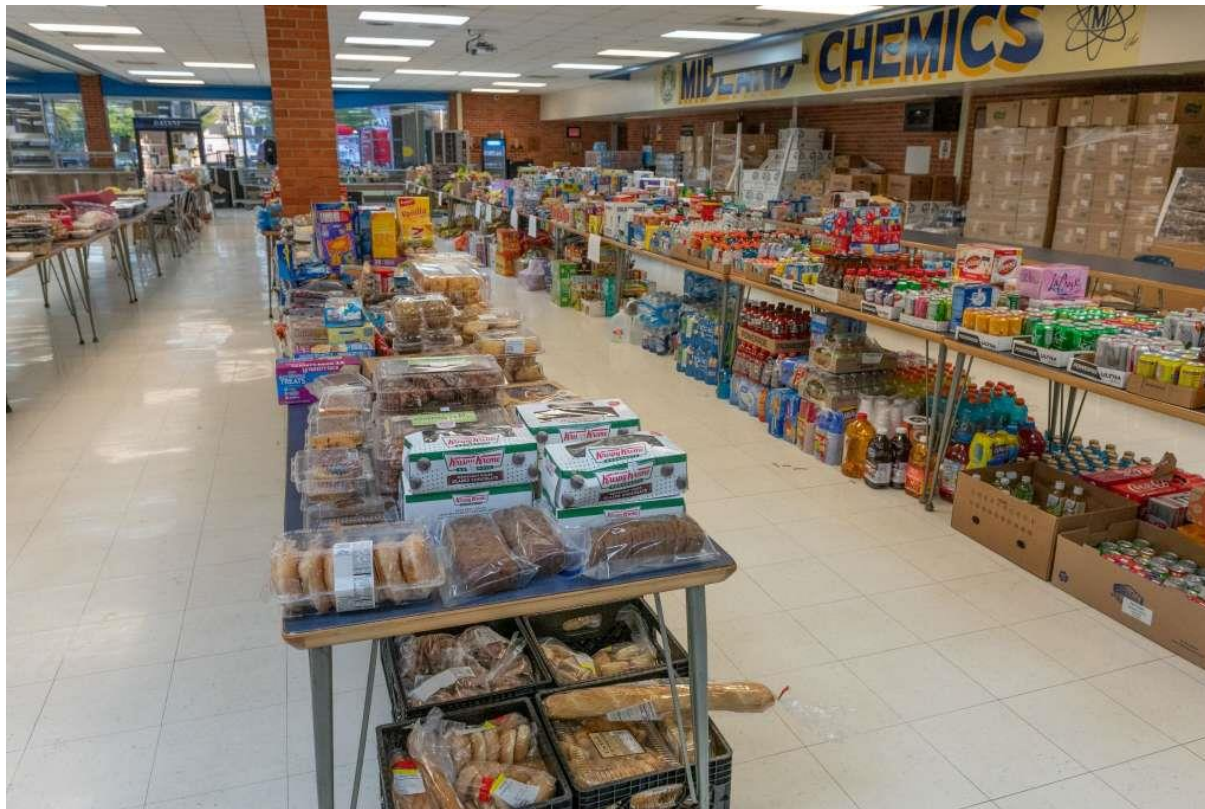


More than 2,500 buildings were damaged when heavy rains and two failed dams caused major flooding in Midland, Saginaw and Gladwin counties in mid-May. (Bridge file photo by Dale Young)

June 8, 2020

Regional Flood

Temporary Housing & Donations



Regional Flood

- Small business owners supporting initiatives
- Diverse army of volunteers
- Recent graduates / seniors diligently cleaning and sanitizing to prevent C19 outbreak
- Not a single death despite major historic floods



Regional Flood Response



Regional Flood

- Whole community coming together and got organized in few hours.
- Experienced logistics leader coordinated internal and external function
- Donations of food, supplies, board games, clothing, pet supplies



SUPPORTING TEAM DOW AND OTHER ESSENTIAL INDUSTRIES



Medical equipment and infrastructure

- Device components
- Hospital beds
- Hospital construction
- Hospital interiors
- IV components and other drug delivery
- Medical parts and kits



Personal and home hygiene and sanitation

- Detergent and bleach packaging
- Dish detergents
- Disinfectants
- Food supply and packaging
- Hand sanitizers
- Hard surface cleaners
- Laundry detergents
- Shampoos
- Soaps and body washes

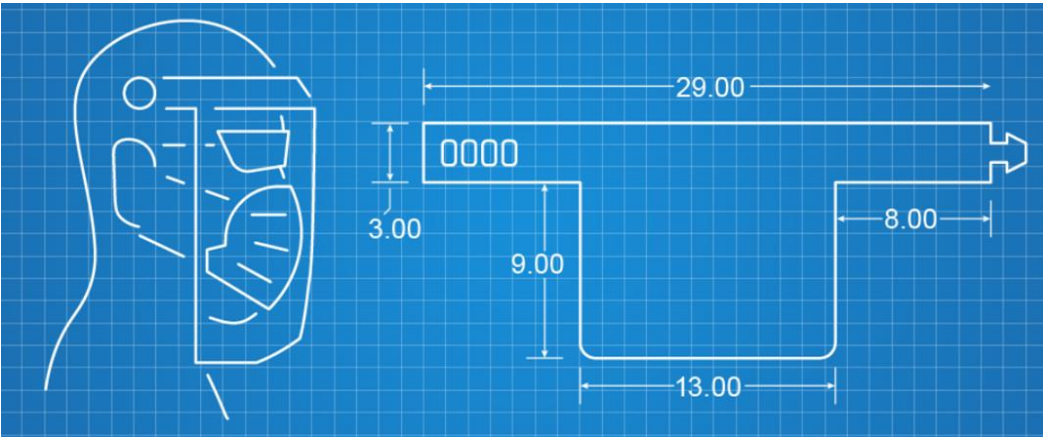


Medical supplies and PPE

- Bandages
- Disposable gloves
- Disposable non-woven plastics
- Hand sanitizers
- Medical adhesives
- Medical labels
- Medical soaps
- Medical supply packaging
- Pharmaceuticals
- Surface sanitizers
- Surgical masks
- Vials, tubes, ampules
- Wipes and tissues



MANUFACTURING TO ADDRESS SUPPLY CHAIN GAPS



RETURN TO THE WORKPLACE PLAYBOOK



Guiding Principles



Compliance and coordination – global and local ownership



Adherence to external and internal criteria



Phased implementation



Individual health and wellbeing



Clear ongoing communication

The corporate Crisis Management Team (CMT) will oversee the process while regional CMTs will implement it in a phased approach. This will provide the flexibility to tailor our return to work based on local, country, and regional factors, while still aligning to our Corporate Pandemic Crisis Management Plan.



FLOOD RESPONSE AND RELIEF





Seek

Together™

FAITH BASED COMMUNITY

COVID-19 RECOMMENDATIONS

We have a **moral** and **ethical** responsibility to **protect** each other. The church should be a source of wisdom and support to deliver a timely, factual, and level-headed response.

We are all in this together.

Pamela Pugh, DrPh, Andrea Pugh-Kelley, MPH, Ryan Komegay,
Pastor Carlton Lynch, Pastor Hurley Coleman Jr.

TAKE TIME TO BE INSTRUCTIONAL

Church Leadership

- Communicate plans for services NOW.
- Help members safely navigate this pandemic.

THE BEST DECISION FOR YOUR CHURCH

What works for YOUR church might not for others

- Stay up to date on local, state, and federal guidelines for public gatherings.
- Know how guidelines impact YOUR church
 - Regulations and guidance continue to move toward very small to no gatherings for upcoming weeks.

SOCIAL DISTANCING

- Refrain from close contact or any physical contact including hand shaking/holding, hugs, kisses, "touching your neighbor" etc.
- Those sick from ANY illness are asked to stay home for their own protection and others
- Asymptomatic Persons, those without symptoms but may have been in contact with someone with COVID-19, are asked to avoid contact with others.
- Anyone at risk, including the elderly and those with pre-existing conditions such as asthma, bronchitis, hypertension, diabetes, and those undergoing lupus or cancer treatment, should also stay home.

TAKE ADVANTAGE OF TECHNOLOGY

- Stream services
 - Zoom, Facebook Live
- Provide info on website
- Allow members to give tithes/offering
 - Givelify, CashApp, PayPal
- Conduct wellness checks, prayer, deliver messages
 - Phone or Conference Calls

CLEANING AND DISINFECTING

Disinfect surfaces and spaces before and after each service/activity

- Hand sanitizer in public areas
- Keep frequently used doors open
- Wear gloves as needed

CHECK ON EACH OTHER*

No one should feel lonely, isolated, or outcast

- Utilize technology to stay in contact and check on each other.
- Church leadership can engage health professionals in the congregation and/or community to provide guidance, support, health recommendations, etc.

*It is best to seek guidance from public health/medical professionals before making in-person contact/visits with elderly, sick, or high risk church members. Asymptomatic Persons may have COVID-19 and not know it.

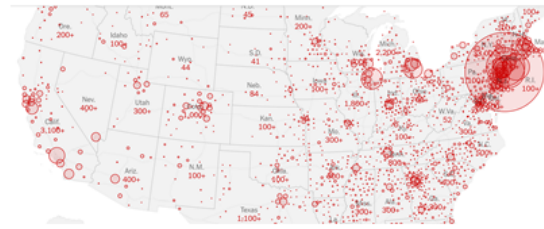
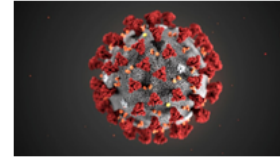
Ongoing Action

COVID-19 Snapshot Overview of Current Disease Status

March 25, 2020

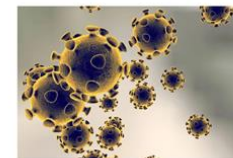
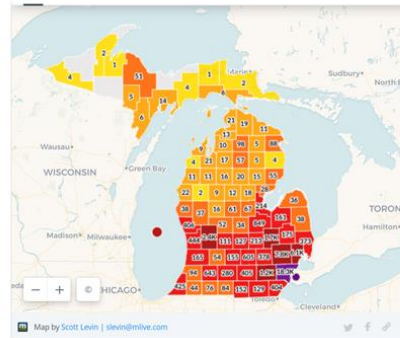
Current situation
The Big Deal & What might happen

What do we do?



GLBR and Covid-19

May 14, 2020



Covid-19 and Community Transition Safe and Successful

June 9, 2020

For more information visit: www.mihia.org





**WE NEED TO THINK BIG
AND ACT BOLDLY TO REINVENT
OUR SHARED FUTURE**

www.thrivegreatlakesbay.org

Phase 2 Implementation

Address Education Challenges &
Prepare Youth for STEM Careers



Access and Quality of Food



Strategic Actions to Address
Financial Stability



Strengthening Primary Care and Care
Coordination models



Summary

- It takes many sectors to address complex/ intractable challenges
- Covid-19: health and economic crises are similar
 - Donations, facilities, technology, expertise, volunteers
- Relationships, trust and ongoing partnership matter
- Communities benefit by multi-sector collaboration
- Backbone / integrator organizations are an asset



WEBINAR

**COMING TOGETHER TO ADDRESS
COVID-19: A COMMUNITY'S
EXPERIENCE**