

February 28, 2022 | NASEM Roundtable

**Healthier
communities for all
through equitable
laws & policies**



ChangeLab Solutions

What will we talk about?

1. Context setting
2. Workforce Capacity Needs
3. Workforce Structural Needs
4. Centering Community



Support for all professions across their entire careers



What will we talk about?

1. Context setting
2. Workforce Capacity Needs
3. Workforce Structural Needs
4. Centering Community



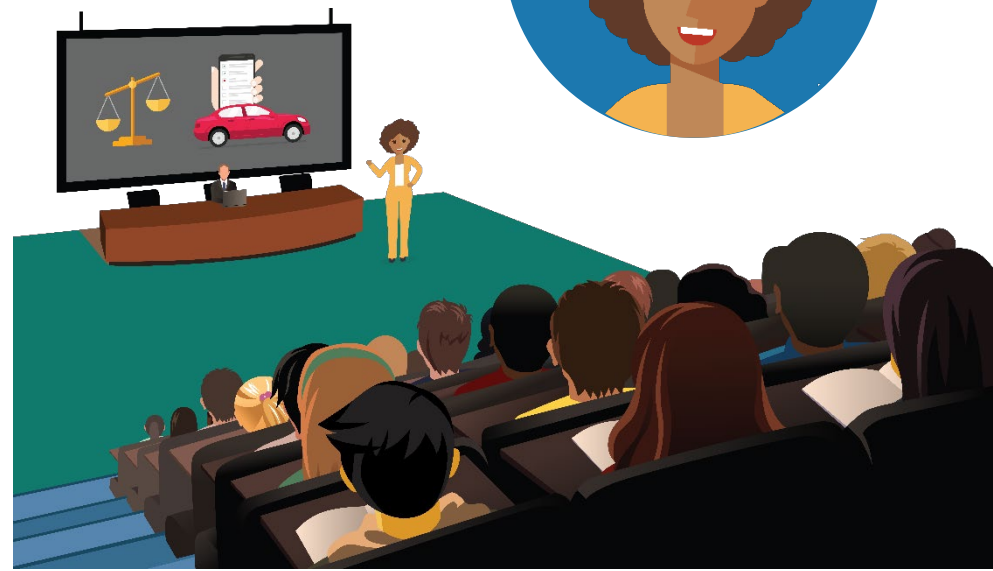
Understanding law is critical to the public health practice



- The ongoing legacy of unfair and unjust laws and policies (both past and present) contributes to growing health inequities
- Understanding and acknowledging the role of law and policy on health is essential to redressing structural discrimination and achieving health equity

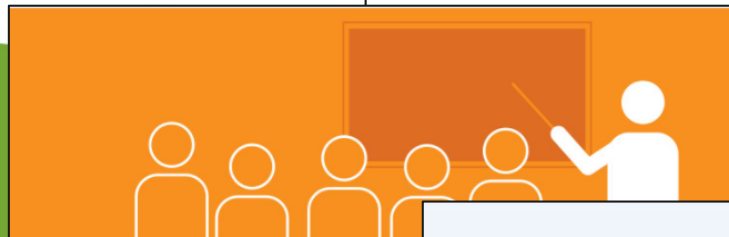
Providing training on law in schools

- Only 13 MPH programs and schools require a law course to graduate
- Only 3 MPH programs and schools require a public health law course to graduate
- No schools require an advocacy course to graduate



Providing law & policy training for practitioners who are in the field

A Roadmap for Health in All Policies
Collaborating to Win the Policy Marathon



GOOD GOVERNANCE

Public Health Law Academy

Advance your skills & competencies in public health with free trainings

There is hardly a public health challenge today that legal or policy solutions. Public health professionals need a clear understanding of our legal system and its role.

The Public Health Law Academy (PHL Academy), supported by the Centers for Disease Control and Prevention (CDC), provides a deeper understanding of population health outcomes. Developed in cooperation with legal experts, the PHL Academy offers easy-to-use online trainings offered by the PHL Academy professionals.

The online trainings can also be used by other professionals, including health nurses, public health educators, public health students in graduate and undergraduate university.



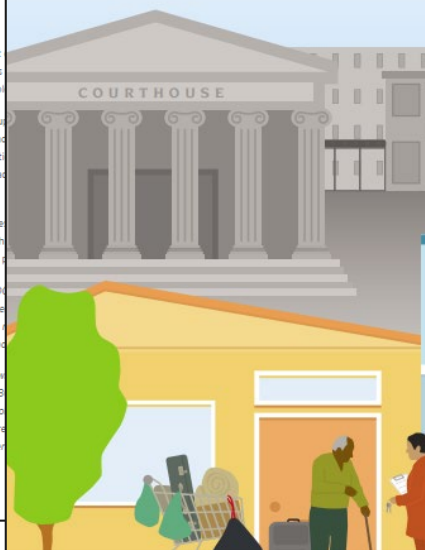
The mark "CDC" and Human Services of this logo is a particular product.

This website was created by Number NU38 ChangeLab Solutions.

Control and Prevention. Its contents are solely the responsibility of the Center for Disease Control and Prevention, US Department of Health and Human Services.

Equitable Enforcement to Achieve Health Equity

An Introductory Guide for Policymakers and Practitioners



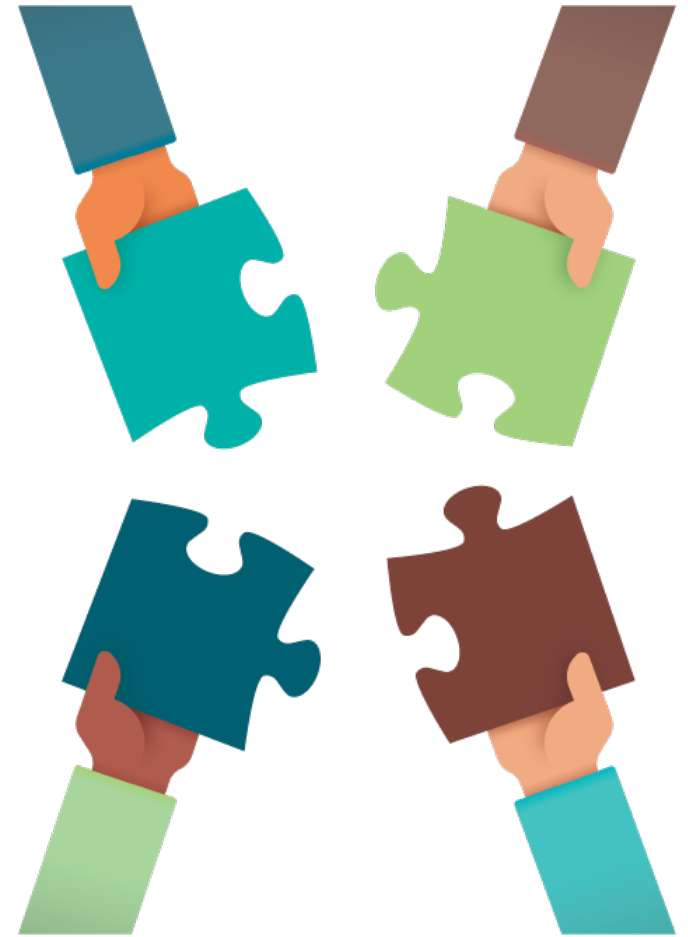
A Blueprint for Changemakers

Achieving Health Equity Through Law & Policy



What will we talk about?

1. Context setting
2. Workforce Capacity Needs
3. Workforce Structural Needs
4. Centering Community





Equity, Diversity, and Inclusion

85% of practitioners think their agency should work on health equity

92% of local health departments executives are white

Health departments are looking internally to center equity & address power & privilege

What other policies do we need to support the workforce?



Consistent funding



Equitable pay across workforce



Policies supporting WF health, mental health, & well-being



Protection against harassment



Hiring policies to support representative workforce



Funding to hire critical gaps in skills



Judicious use of licensing & credentialing regs



Other?

What will we talk about?

1. Context setting
2. Workforce Capacity Needs
3. Workforce Structural Needs
4. Centering Community



The Power of Community- Based Organizations



Segment of the population health workforce



Serve as an important link between government and community



They leverage partnerships to extend their reach and impact



Connect residents with engagement opportunities

Pandemic Response & CBO's

How California's Community-Based Organizations Filled the Gaps for Underserved Communities

Meeting the Needs of Racially & Ethnically Diverse Communities During the Pandemic



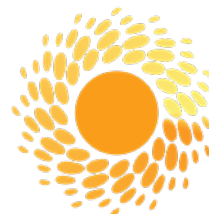
CA COVID Equity Collaborative



ChangeLab Solutions



PREVENTION
INSTITUTE



California Pan-Ethnic
HEALTH NETWORK



How CBOs Made a Difference in Meeting Community Needs

CBOs used person-centered strategies to address residents' immediate needs.

- Employed staff from the communities they serve
- Used a trauma-informed approaches
- Met people where they are

CBOs kept communities socially connected and engaged.

- Conducted tech-savvy outreach
- Conducted outreach to communities without digital access
- Provided safe ways for community to connect

Contact Information



Shauneequa Owusu

sowusu@changelabsolutions.org



Rebecca Johnson

rjohnson@changelabsolutions.org

www.changelabsolutions.org