

“marginality... is also the site of radical possibility, a space of resistance... a central location for the production of a counter-hegemonic discourse that is not just found in words but in habits of being and the way one lives... a site one stays in, clings to even, because it nourishes one’s capacity to resist. It offers to one the possibility of radical perspective from which to see and create, to imagine alternatives, new worlds.”

hooks (2015, p.149)



CENTERING THE SURVEYED & SURVEILLED:

TOWARDS A RADICAL PRAXIS OF RESISTANCE, REFUSAL, & RESURGENCE FOR EPISTEMIC & HEALTH JUSTICE

Dr. Ryan J. Petteway, DrPH, MPH

Associate Professor

Community Health

OHSU-PSU School of Public Health

petteway@pdx.edu

Power & Knowledge Production: Foucault (& other “f” words)

• Repressive & Productive Power (Foucault, 1980)

Objects

- Production of “knowable” “objects” to manufacture “expertise”

Ritual

- Discursive rules of practice, processes of engagement, & performance spaces

The Privileged

- Recursive properties of the preparation & vetting/credentialing of performers

Not “a” truth or ensemble of truths, but an “ensemble of rules according to which the true and the false are separated and specific effects of power attached to the true” (p.132)

Theory

Power & Knowledge Production: Disciplinary & Hegemonic Power

• 4 Domains of Power (Hill Collins, 1991)

Structural

- Social structures (e.g. laws, economy) that organize power relations and maintain oppression

Disciplinary

- Control and organization of behavior through surveillance and routinization to manage oppression

Hegemonic

- Shaping beliefs through development and normalization of ideology/culture to legitimize oppression

Interpersonal

- Relationships and interactions that are part of our daily lives that uphold oppression



Power & Knowledge Production: Other “F” Words

• Representation/Exclusion in Public Health Knowledge Production

Objects

Ritual

The Privileged

Structural

Disciplinary

Hegemonic

Interpersonal

- **Tenure-track faculty:**
5.7% Black, 5.7% Latinx, 0.3% Indigenous (Goodman et al, 2019)
- **Editorial boards:**
77% White; 1% Black; 3.8% Latinx; 88% straight (Salazar et al 2021; McFarling, 2021)
- **NIH grant review boards:**
mostly White; only 11% from “underrepresented minority” groups (NIH, 2021)

Power & Knowledge Production: Epistemic Violence & Injustice

- **Epistemic Violence/Oppression** (Dotson, 2011; 214)
- **Epistemic Injustice** (Abimbola, 2019; Bhakuni & Abimbola, 2021)



Critical Public Health >
Volume 33, 2023 - Issue 1

Submit an article

Journal homepage

Enter keywords, authors, DOI, ORCID etc

This Journal



Advanced search

8,766

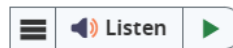
Views

1

CrossRef
citations to date

297

Altmetric



Commentary

On epidemiology as racial-capitalist (re)colonization and epistemic violence

Ryan J. Petteway

Pages 5-12 | Received 03 Dec 2021, Accepted 23 Jul 2022, Published online: 03 Aug 2022

Download citation

<https://doi.org/10.1080/09581596.2022.2107486>



Open access

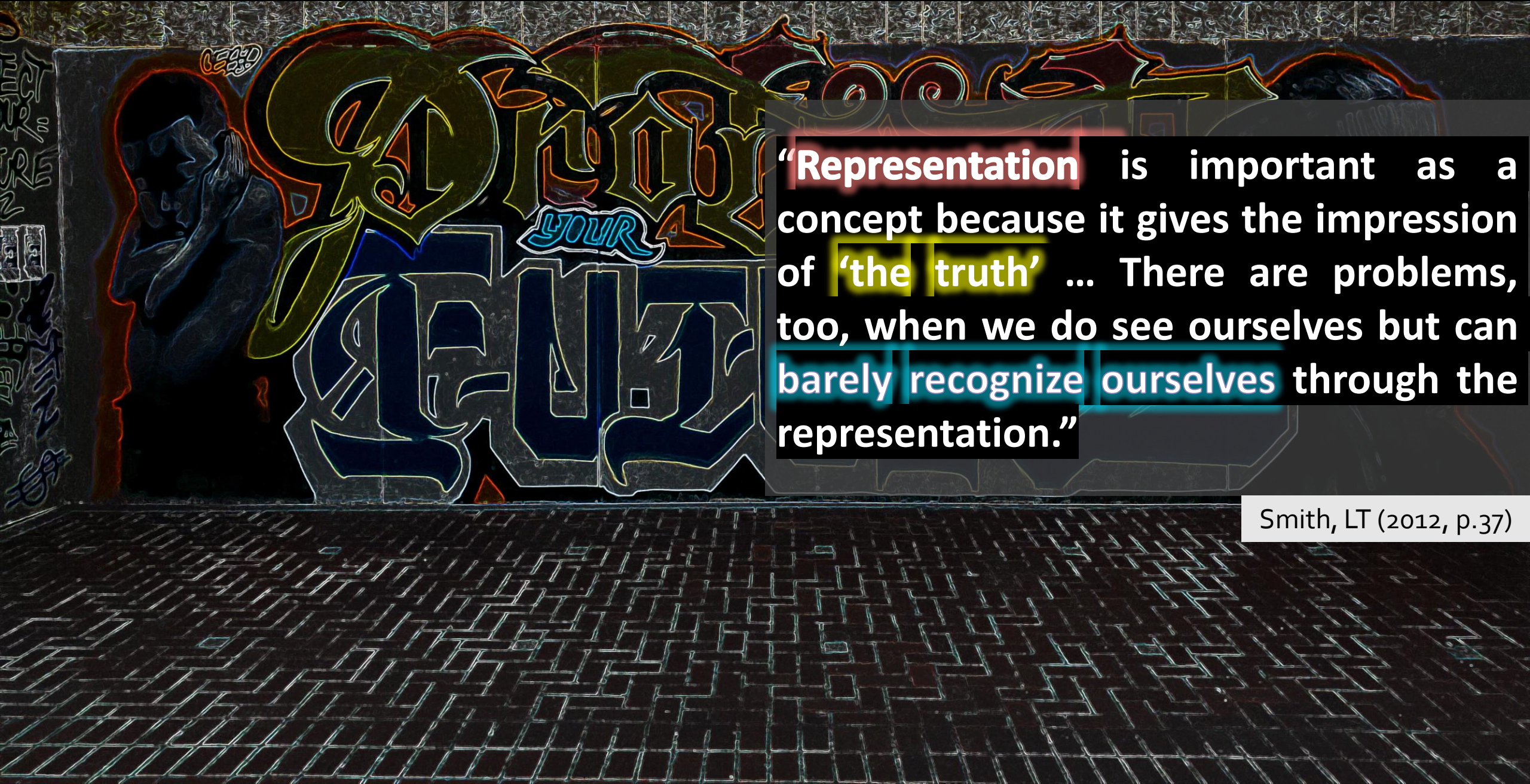
Theory

Resistance, 'Refusal', & Resurgence

- **Reararticulation : Counternarratives** (Gramsci)
- **Counterstorytelling** (Delgado, 1989; Solorzano & Yosso, 2002)
- **Power from the Margins** (hooks)
- **Rememory** (Morrison)
- **Public Health Critical Race Praxis** (Ford & Airhihenbuwa, 2010)
- **Epistemic Disobedience** (Mignolo, 2009)
- **Epistemic Witnessing** (Pillow, 2019)
- **Racially-Just Epistemologies** (Delgado, 1989; Solorzano & Yosso, 2002)
- **Generative Refusal** (Simpson, 2020)

“In the context of resistance, generative refusal not only refuses colonialism, but it affirms a different present by generating different worlds – worlds that centre the material and spiritual needs of the community.” Simpson, 2018

Breathe.



“Representation is important as a concept because it gives the impression of **‘the truth’** ... There are problems, too, when we do see ourselves but can **barely recognize ourselves** through the representation.”

Smith, LT (2012, p.37)

A People's Social Epi: An Origin Story

“Let me take a trip down memory lane...” Nas, 1994



A People's Social Epi: An Origin Story

- Rearticulation : Counternarratives (Gramsci)
- Ecosocial Theory: social production of social epi science (Krieger, 1994; 2001)
- Community-Based Participatory Research (CBPR) (Israel, 1992; 1998; Minkler 2000; 2010)
- Popular Epidemiology (Brown, 1992; 1993; 1998)
- Information & Communication Technology (Diamond, 2010; Pfister, 2012; D'Ignazio, 2014)
- Decolonizing Methods (Smith, 2012)
- Feminist & Black Feminist Theory (hooks; Haraway; Hill Collins)
- Critical Consciousness & Praxis (Freire)
- A People's Social Epi (Petteway, 2016)

Place-Health
Research



Practice

A People's Social Epi: An Origin Story

Local Ground

Grayscale

Search for Places

La Belle View

WELLESLEY AVE

EASTER AVE

WILKENS ST

FRANKLIN AVE

MADISON AVE

CLINTON ST

DEAN MARTIN BLVD

OHIO RIVER

MARKET ST BRIDGE

WV 2

200 m

Terms of Use

(The City)

"It's like they wanna wipe us off the map."

Market Square PJs

Harding Middle School

Big Red

MLK Center

Friend's Apt

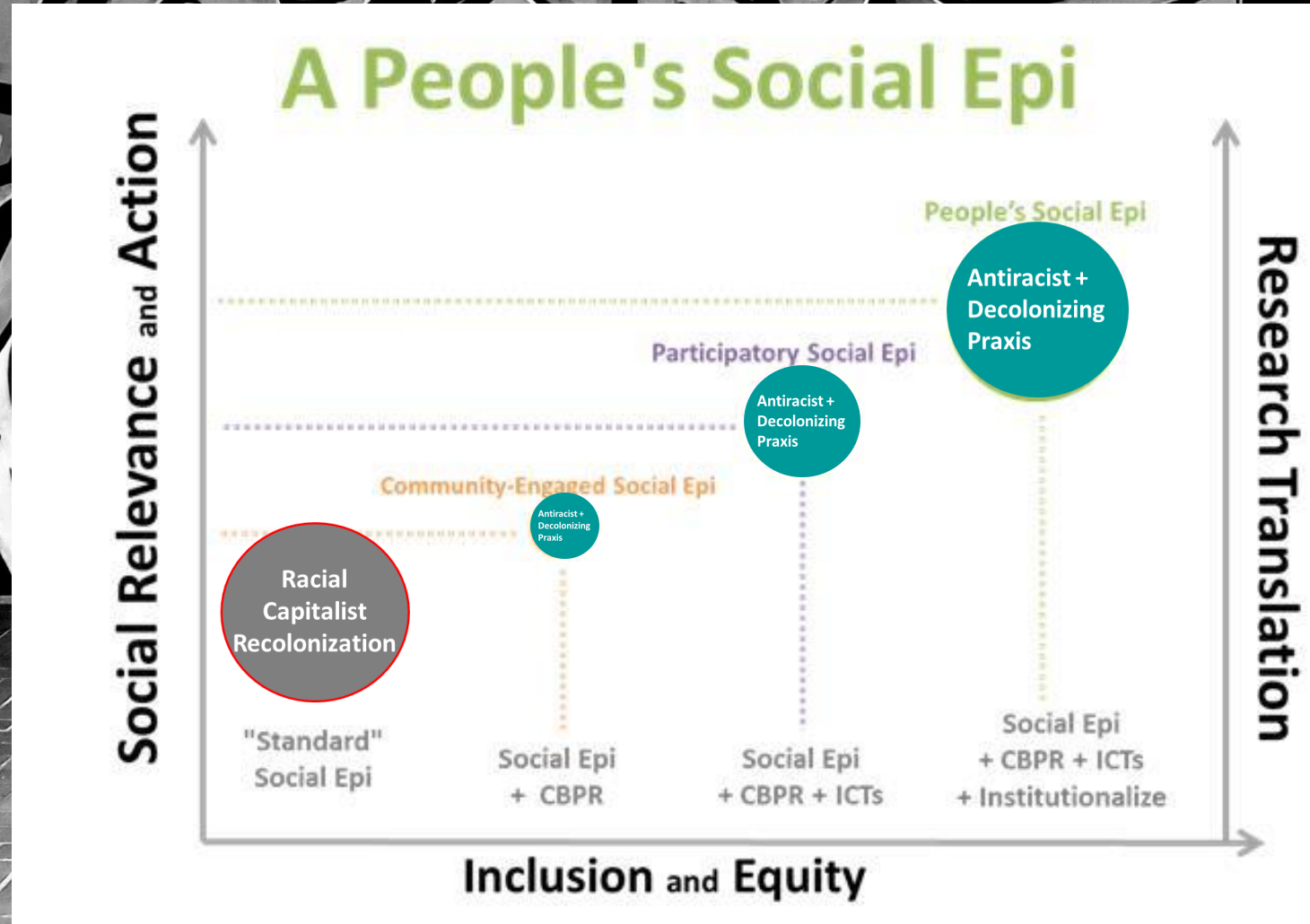
Harding Middle School 2

The Library

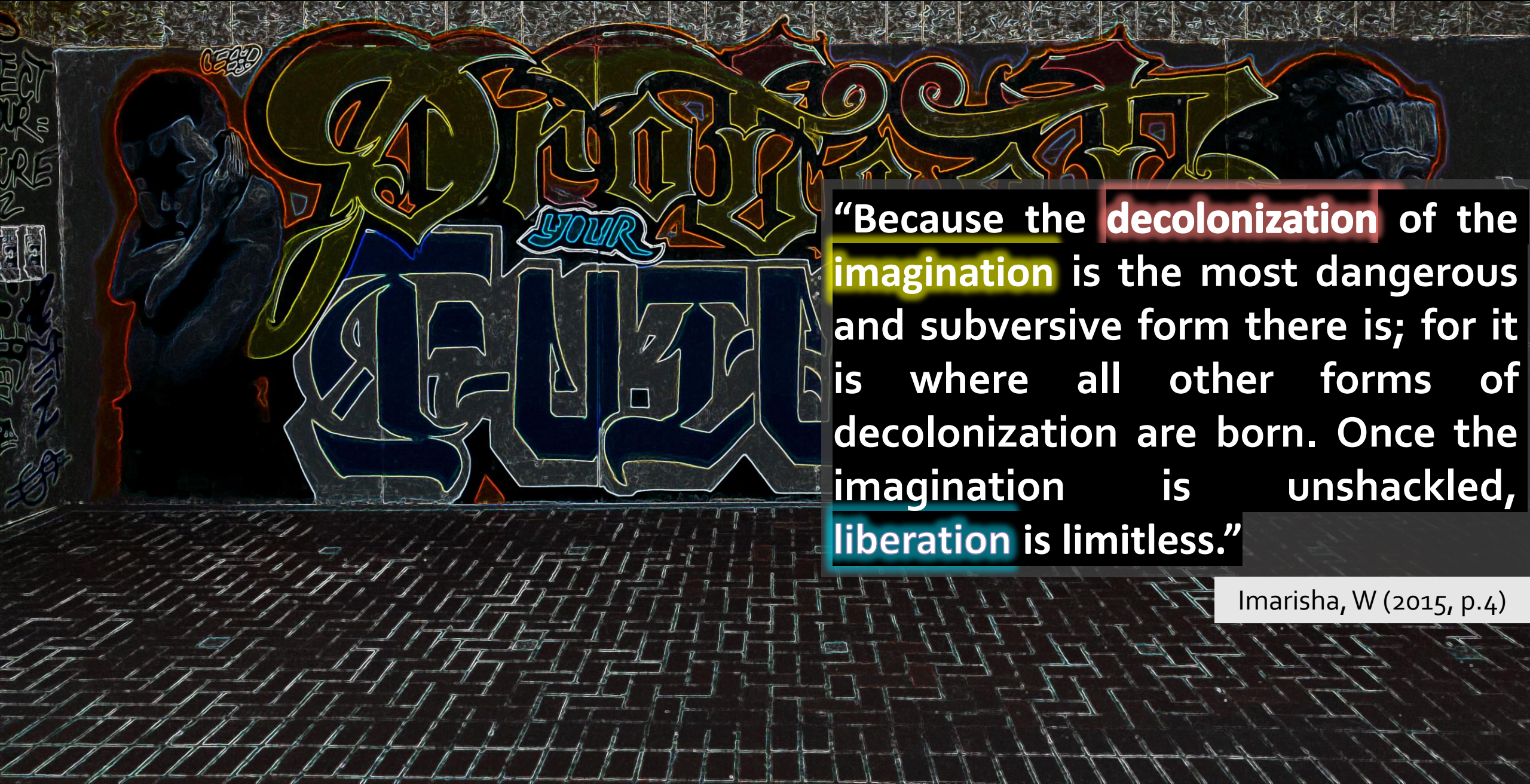
The Ball Park

Museum

A People's Social Epi: An Origin Story



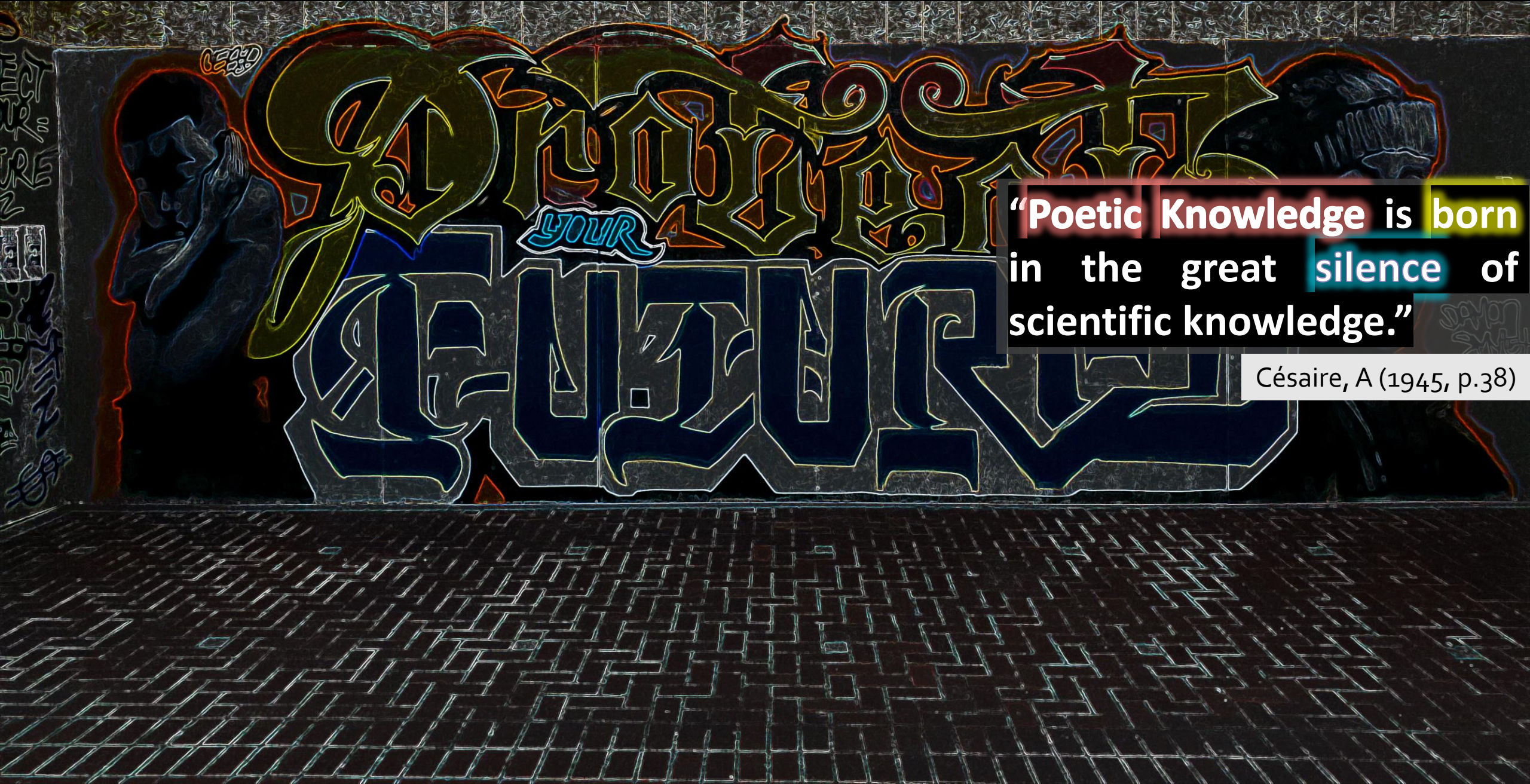
Breathe.



“Because the **decolonization** of the **imagination** is the most dangerous and subversive form there is; for it is where all other forms of decolonization are born. Once the **imagination** is **unshackled**, **liberation** is limitless.”

Imarisha, W (2015, p.4)

Breathe.



“Poetic Knowledge is born
in the great silence of
scientific knowledge.”

Césaire, A (1945, p.38)

A People's Social Epi: Poetry & Public Health



Volume 51, Issue 4
August 2022

JOURNAL ARTICLE

Something something something by race, 2021 [Get access >](#)

Ryan J Petteway ✉

International Journal of Epidemiology, Volume 51, Issue 4, August 2022, Pages 1353–1354, <https://doi.org/10.1093/ije/dyac010>

Published: 04 February 2022 [Article history ▾](#)

Key words: Racial health inequities, structural racism, antiracism, decolonizing, poetry

Some Random Outcome Based On Data
Availability With No Theoretical Grounding

10				
8	keep piling our bodies upon our bodies, counting the ways we go silent – we tell them, as we've told them for decades, how to care for our limbs before they go missing; how to listen to our lungs, and hear, the words we push from our scratched throats before the fluid and smoke and scar tissue eat our air; i imagine our pleas smell like necrotic nag champa cones, wisps of a godless prayer that twist into a line of least squares – fade	from spectacular black to something decidedly ordinary	oh, how quickly we learn to hang degrees on drywall, how to squeeze our lives into starved models, stripped naked for the pleasure of a statistician's lusting parsimonious eyes: finding findings found within findings founded upon foundations found before one could find a spice or a continent to mash	our bodies cornerstoned and our cause remains lost – a death with no preceding life is a birth, is it not? perhaps, if we stack our bodies high enough, we can ask the sun not to make us so stackable, so beautiful on paper
6				
4				
2				
0				
	Purple	White	Polka Dot	Green

A People's Social Epi: yHEART^{PDX}

yHEART^{PDX} Vol.3

Antiracism
Faculty
Fellowship:
PSEP^{PDX}

Sylvia Rivera

Orientation + Training

- Public Health 101
- Epidemiology 101
- SDH + Social Epi 101
- Health Equity + Social Epi 101
- “Place”, “Neighborhoods”, + Health 101
- Social Epidemiology 101
- Public Health Research 101
- Public Health Research Ethics 101
- CBPR 101
- YPAR 101
- **Decolonizing PH Research 101**

Methods

- Photovoice
- Activity Space Mapping
- X-Ray Mapping
- Participatory GIS
- **Poetry**
- **Decolonizing Data Hub**

A People's Social Epi: Poetry & Public Health

PUBLIC HEALTH POETRY PROJECT



Annual Youth Poetry Competitions

- Partners
 - Self Enhancement Inc. (SEI)
 - Asian Pacific American Network of Oregon (APANO)
- Poetry + Public Health Workshops
- 3 annual competitions
 - February (Black History Month)
 - April (National Minority Health Month, National Poetry Month, Public Health Week)
 - May (Asian American + Pacific Islander Heritage Month)

Poetry Chapbooks

- Chapbook for each competition
- Featuring:
 - 1st, 2nd, 3rd place
 - 5 Finalists
 - 7 Semi-Finalists
 - 5 solicited pieces
- Local artists and presses

Antiracism
Faculty
Fellowship:
PSEP^{PDX}

Sylvia Rivera

Praxis

A People's Social Epi: Poetry & Public Health

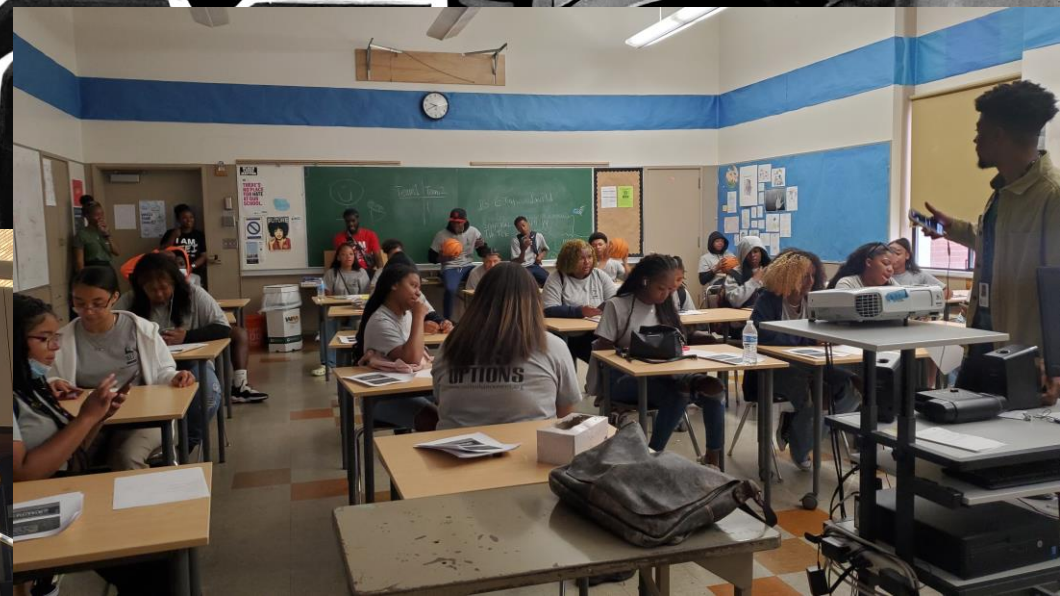
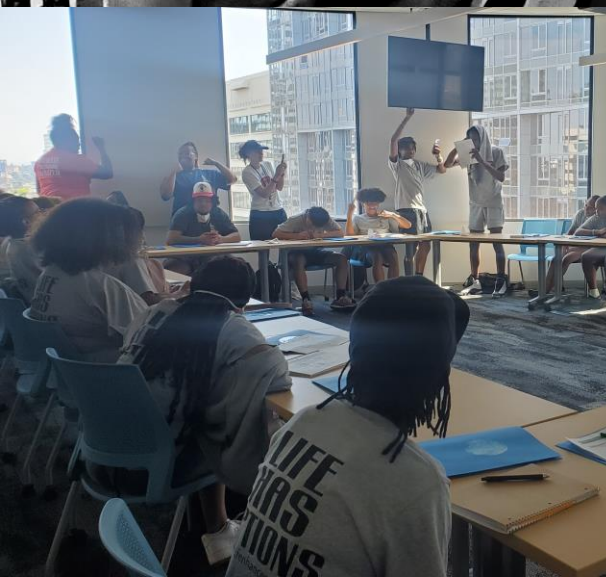
Antiracism
Faculty
Fellowship:
PSEP^{PDX}

Sylvia Rivera

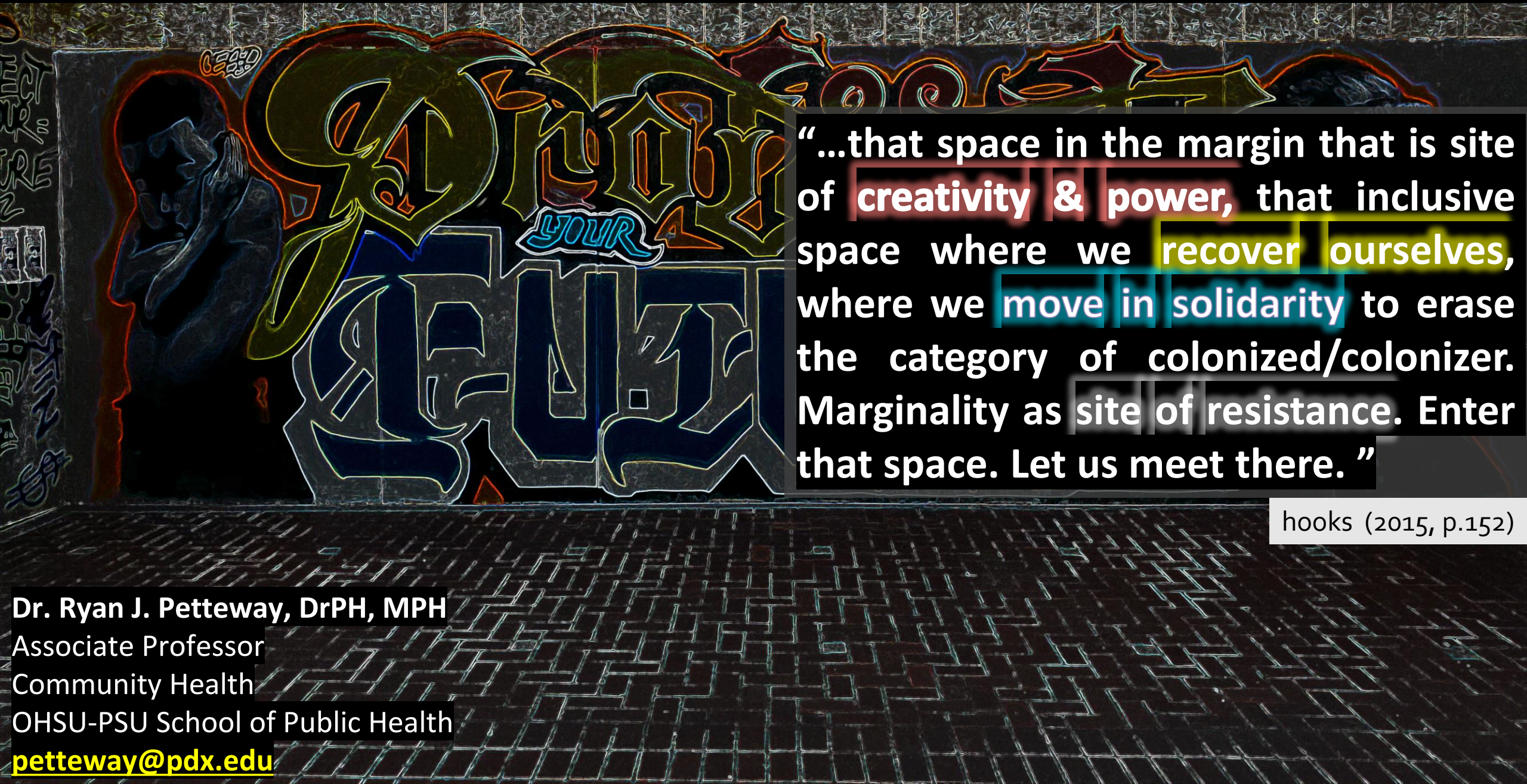
PUBLIC HEALTH POETRY PROJECT



Summer 2022 SEI Poetry Workshops



Breathe.



“...that space in the margin that is site of **creativity & power**, that inclusive space where we **recover ourselves**, where we **move in solidarity** to erase the category of colonized/colonizer. Marginality as **site of resistance**. Enter that space. Let us meet there. ”

hooks (2015, p.152)

Dr. Ryan J. Petteway, DrPH, MPH

Associate Professor

Community Health

OHSU-PSU School of Public Health

petteway@pdx.edu