

# The Reproductive Scientist Development Program

---

RSDP Administered by:



P: (618) 977-8070

E-mail: [amanda.heflin@duke.edu](mailto:amanda.heflin@duke.edu)

Website: [www.RSDProgram.org](http://www.RSDProgram.org)

# The RSDP Program

---

- Established in 1988 to train obstetrician-gynecologists committed to academic investigative careers in fundamental biomedical science
- Goal: to develop a pipeline to support young physician-scientists who will make the critical advances in basic and translational biomedical research to improve the clinical practice of obstetrics and gynecology

# Eligibility

---

- M.D. or D.O. degree.
- U.S. citizen, noncitizen national, or been lawfully admitted for permanent residence and possess an Alien Registration Receipt Card (I-151 or I-155)
- Completion of a four-year internship and residency in obstetrics-gynecology

# Program Description (2023-present)

---

The program consists of two Phases, with each Phase requiring 75% protected time.

During the first two years of the program (Phase I) scholars pursue intensive basic research in the laboratories of nationally recognized scientific leaders.

Upon successful approval of a competitive application (R03 or R21 format), the final two years of the program (Phase II) scholars pursue laboratory-based research and a transition to independence

# What RSDP provides

---

- Career development support for obstetricians and gynecologists who are committed to a basic science career in academic medicine and research.
- Protected research time
  - 75% during Phase I & II
- Ability work with some of the most accomplished leaders in biomedical research
- Annual networking and career development events
  - Potential collaborations for future projects
  - Continuous scientific and career support.

Funding for salary support and research supplies

# Program Sponsors

---



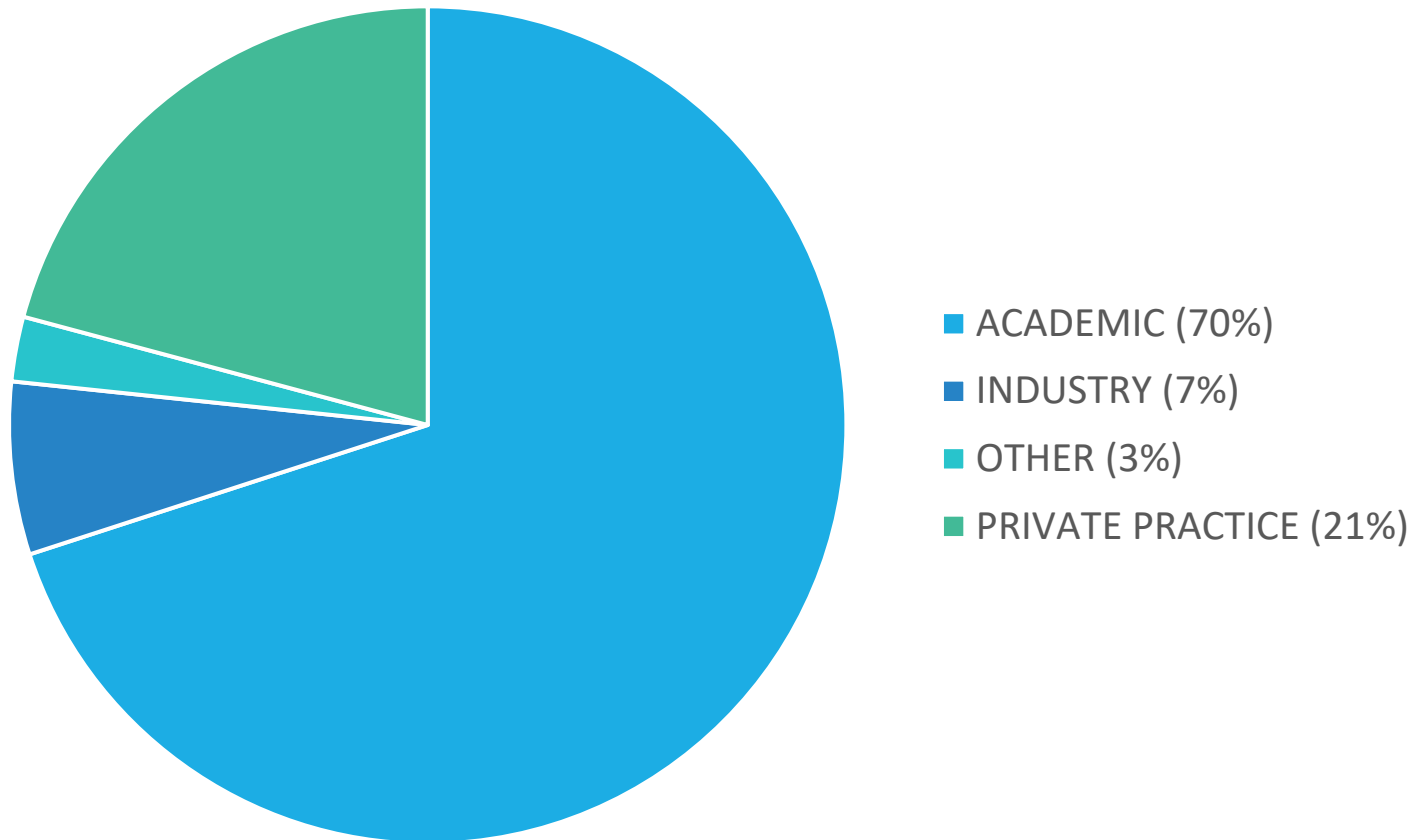
# Sub Speciality Breakdown

---

	FP	UROGYN	GEN	GENETICS	GYN- ONC	MFM	NON- TRA	REI	Total
Female		1	4	1	17	27	2	25	78
Male	1		3		10	13	2	13	42
<b>Total</b>	<b>1</b>	<b>1</b>	<b>7</b>	<b>1</b>	<b>27</b>	<b>40</b>	<b>4</b>	<b>38</b>	<b>120</b>

# Career Focus (ROI)

---





# Funding Success\* (ROI)

\* 2021 statistics

Federal:  
38% K; 43% R; 21%U/P

Foundation: 53%

Award type <sup>a</sup>	RSDP alumni
Total number of RSDP scholars	103
BIRCWH	5 (5)
WRHR	19 (18)
NIH funded investigators <sup>b</sup>	47 (46)
K08	15 (15)
R01 <sup>c</sup>	30 (29)
R21	14 (14)
P01	3 (3)
P50	3 (3)
U01	6 (6)
U54	9 (9)
Other NIH <sup>d</sup>	3 (3)
Department of defense	3 (3)

Award type <sup>a</sup>	n (%)
Foundation funded investigators	28 (53)
Burroughs Wellcome Fund	5 (9)
Gates	3 (6)
March of Dimes	9 (17)
American Association of Obstetricians & Gynecologists	1 (2)
American Society of Reproductive Medicine	6 (11)
Gynecologic Oncology Group	2 (4)
Investigators funded by other foundations	19 (36)

<sup>a</sup> Scholars could report more than one successful grant

# Changes in NIH Support for the RSDP

---

## **Supported 60 total scholar years (years 1-30)**

- 3 scholars per year
- 5 total years--2 years phase 1 and 3 years phase 2

**Beginning year 31**, number of scholars supported per year and the number of supported years per scholar decreased significantly

- 2 instead of 3 scholars per year
- Phase 1--2 years; phase 2--2 years
- **28 total scholar years** of support across a 4 year program

Changes from 100% protected time in phase one and 75% in phase two to 75% protected time in both phases in year 37 (2023)

# Action Items

---

**Expand support for existing K12 programs that support basic and translational training in women's health research**

**Number of positions**

**Length of training**

**full allowable 6 years of K type funding-especially for surgery-intensive subspecialties**

**Increase diversity of trainees**

**consider competitive in-program funding to train underrepresented undergraduate and medical students interested in women's health research**

# THANK YOU!

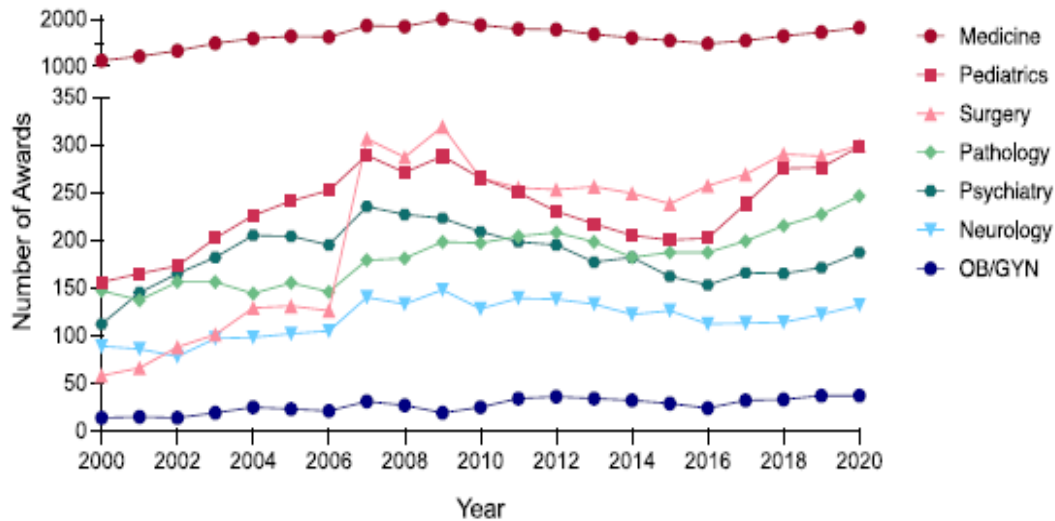
---



Website: [www.RSDProgram.org](http://www.RSDProgram.org)

**FIGURE 1****Dearth of early career physician-scientists in obstetrics and gynecology****A**

Trends in NIH Career Development Awards by Department (K08, K23)

**C**

MD-PhD PGY-1 Residents by Specialty, 2015-2019	n=565 ± 24 Mean (SD), %
Internal Medicine	37.4 (2.4)
Pediatrics	10.5 (1.2)
Pathology	8.5 (0.6)
Psychiatry	7.5 (1.2)
Surgery	6.7 (0.5)
Transitional Year	4.6 (0.7)
Neurosurgery	3.2 (0.5)
Anesthesiology	2.9 (1.0)
Neurology	2.8 (0.5)
Obstetrics & Gynecology	2.5 (0.5)

**B**

Obstetrics and Gynecology

