

# Violence as a Preventable Public Health Problem

Thomas Simon, PhD  
Senior Director for Scientific Programs  
Division of Violence Prevention  
Centers for Disease Control and Prevention



# Overview

- Public health approach to violence prevention
- Prevention resources
- Examples of strategies

# DVP's Vision

***A violence-free society in which all people and communities are safe, healthy, and thriving.***

## **DVP's Guiding Principles:**

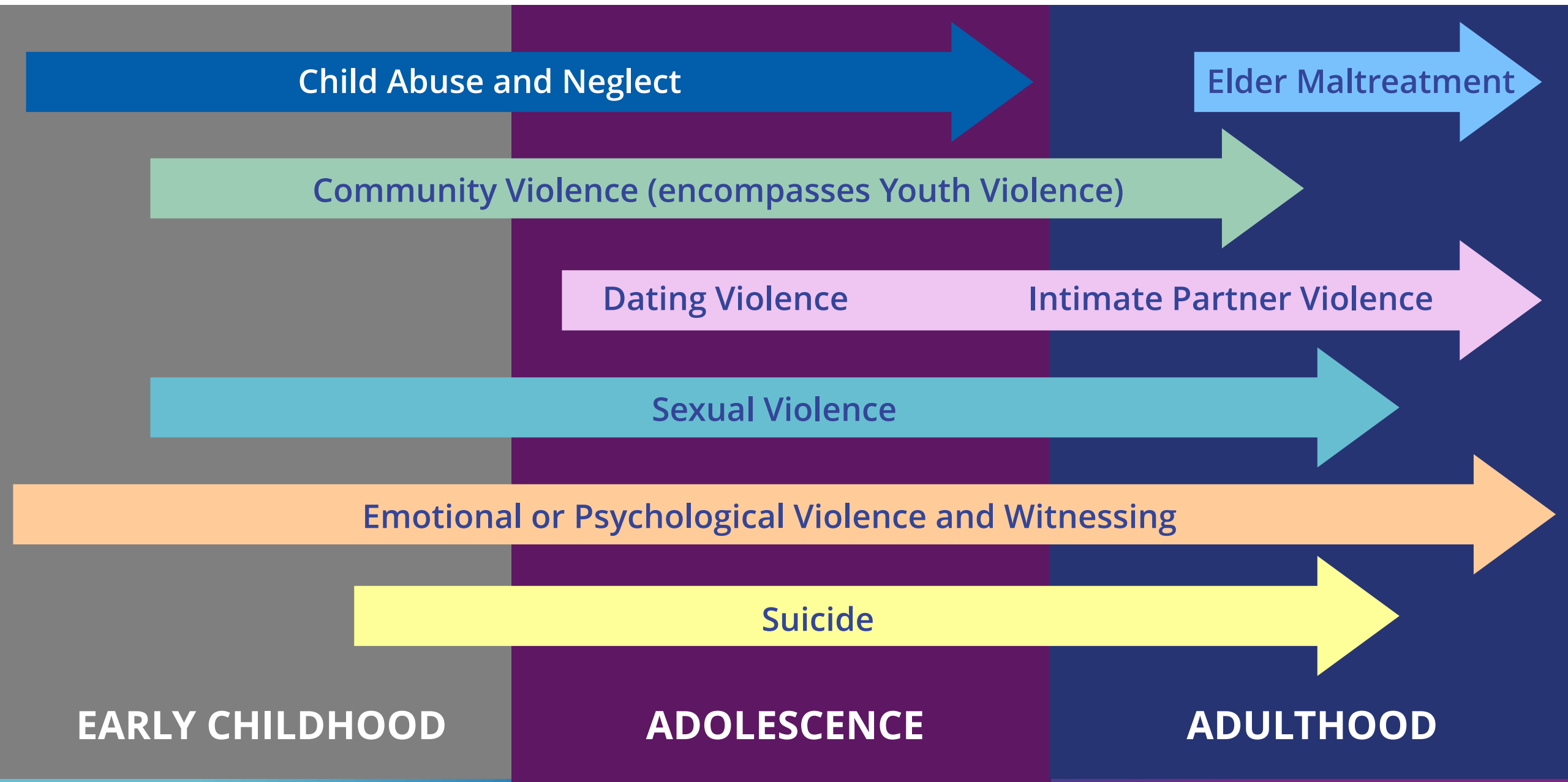
- Advancing economic, gender, and racial equity.
- Enhancing positive relationships and environments.
- Addressing factors that cut across multiple forms of violence.
- Prioritizing efforts that create societal- and community-level impact.

# Social Determinants of Health

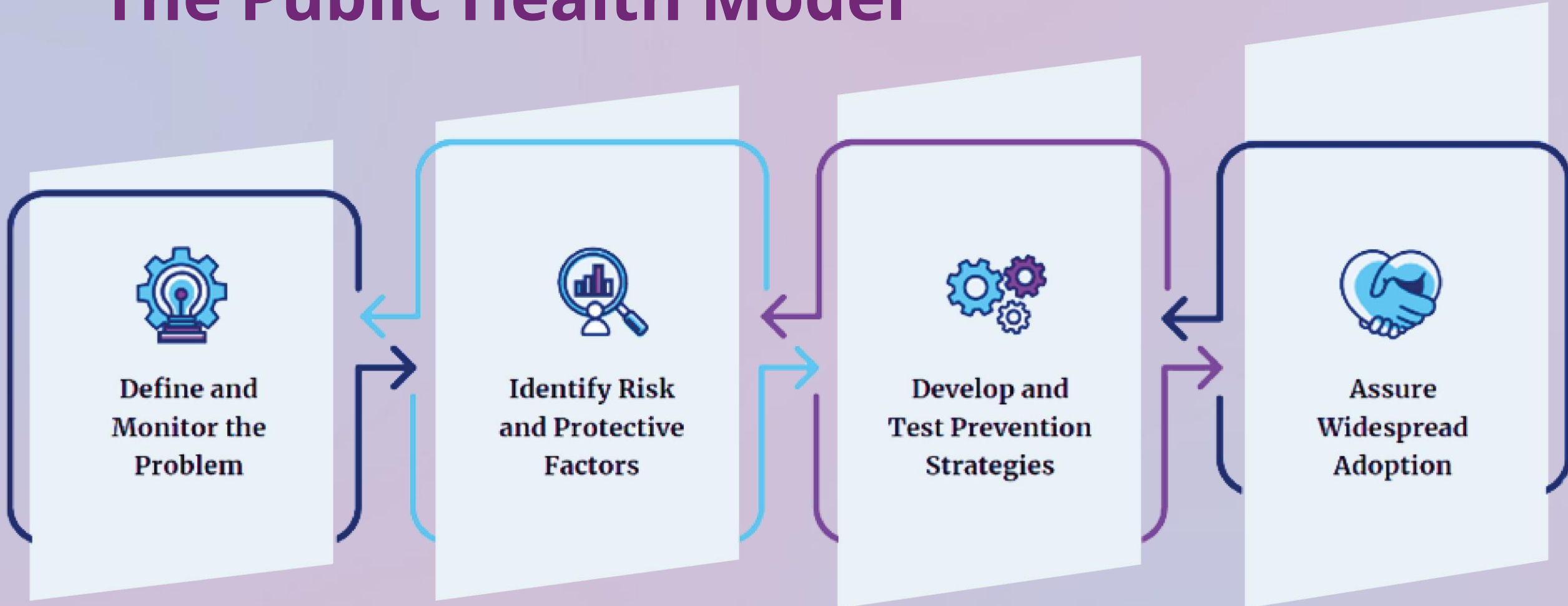
***The circumstances in which people are born, grow, live, work and age, and the systems put in place to deal with illness.***

***These circumstances are in turn shaped by a wider set of forces: economics, social policies, and politics.***

# Violence Across the Lifespan

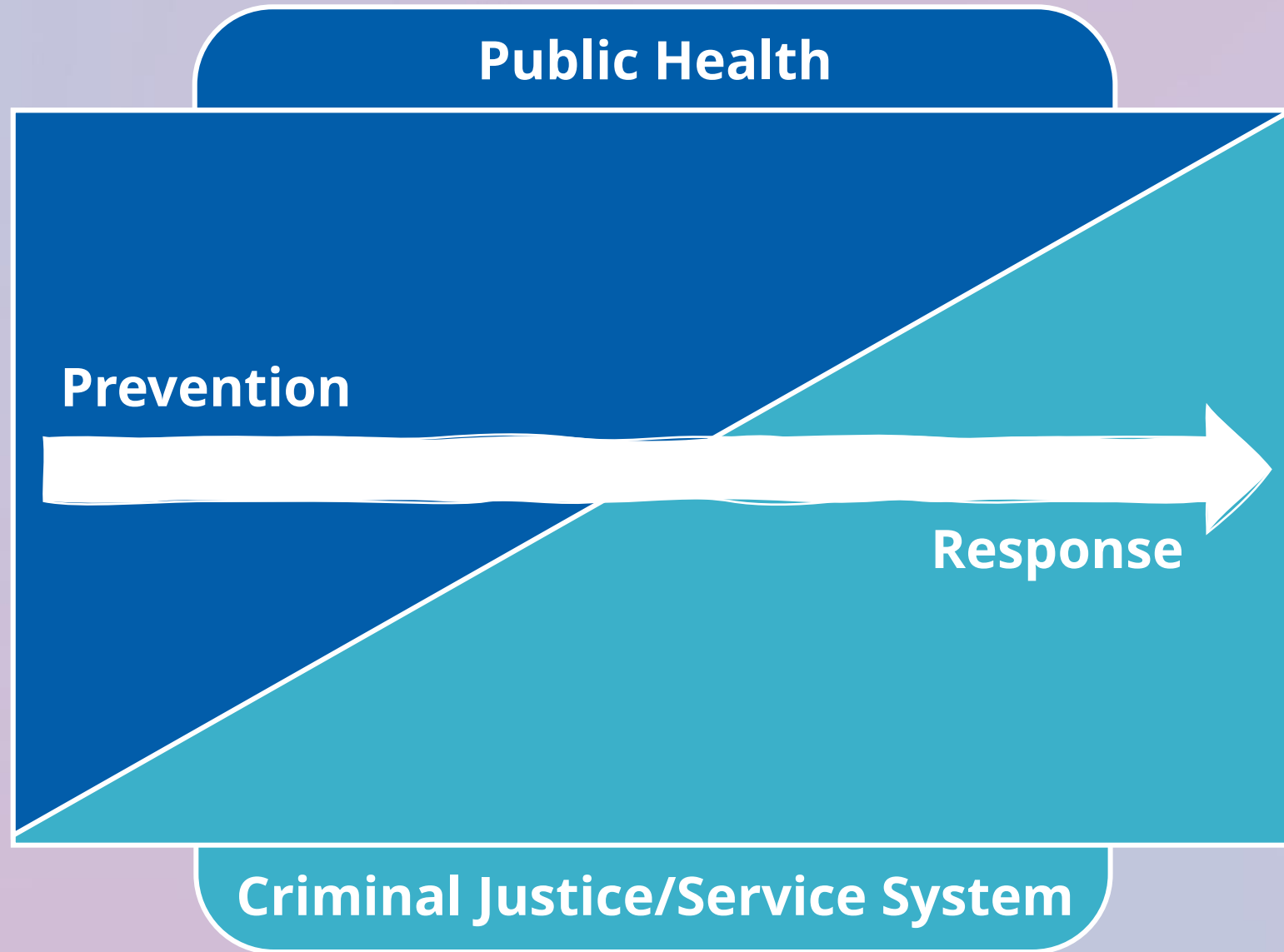


# The Public Health Model




Data, partnerships, and experience are the foundations of the public health approach to violence prevention

# Violence is a Public Health Problem





A close-up photograph of a person's hand lighting a candle. The hand is holding a lit matchstick to the wick of a white candle. The scene is dimly lit, with the primary light source being the candle and the match. In the background, another person is visible, also holding a lit candle. The overall atmosphere is somber and reflective.

**Over 68 lives lost to homicide every day**



# Firearm Homicides Have Risen Across the United States

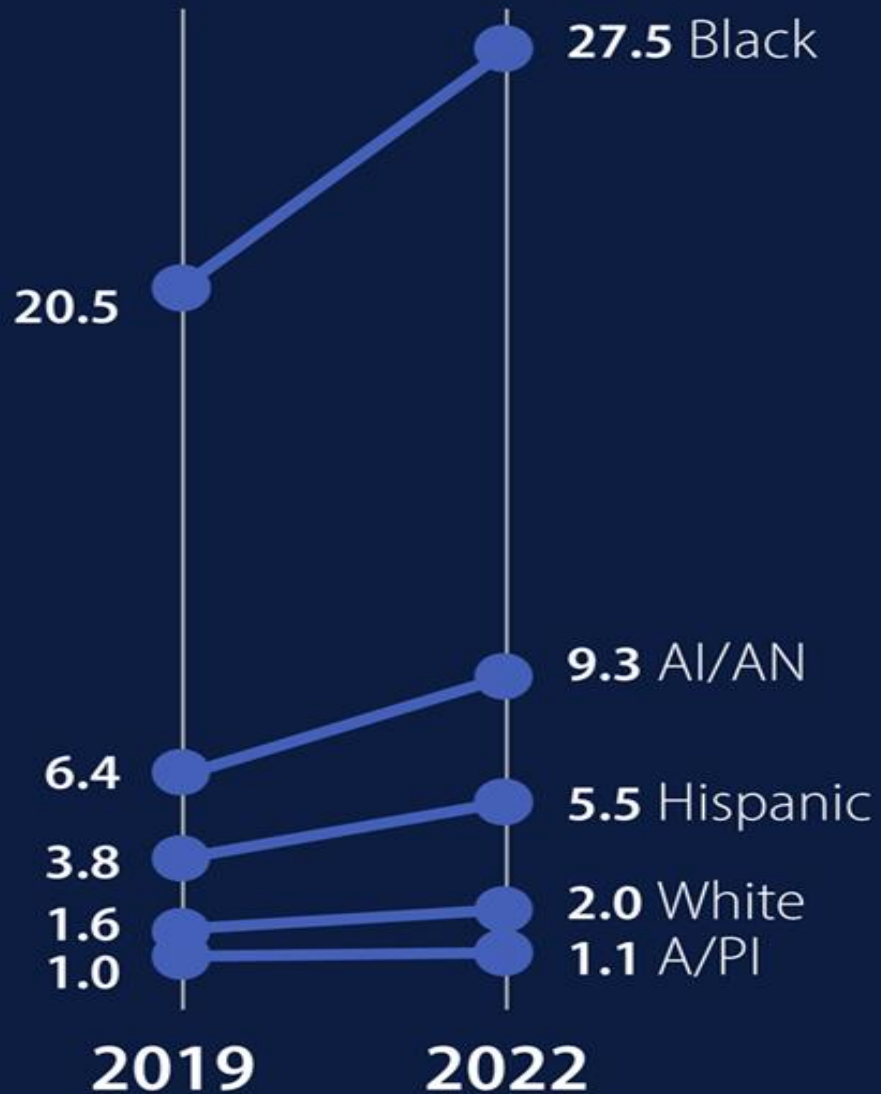


*Rate per 100,000*

Notable  
increases  
since 2019

# Firearm Homicides

(Rate per 100,000)



AI/AN =American Indian/Alaska Native; A/PI=Asian/Pacific Islander

## Widening Disparities

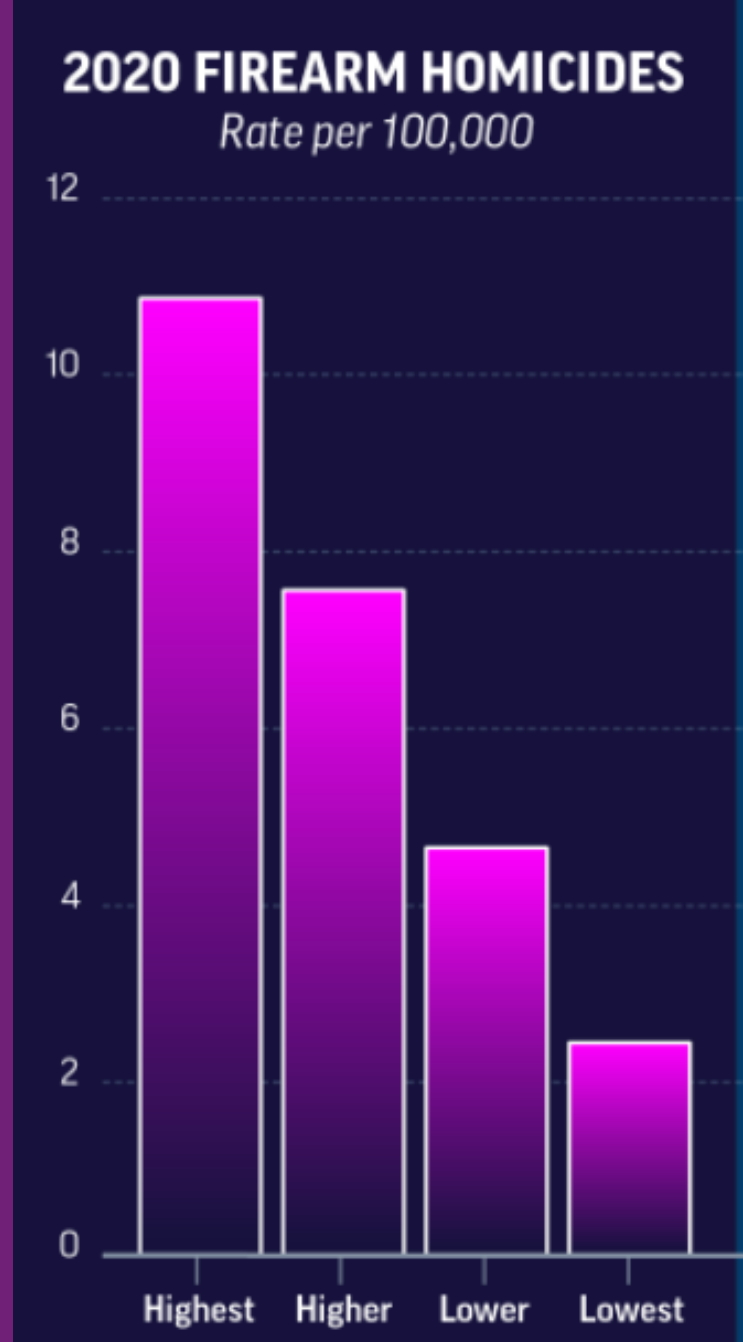
Rates increased the most among Black, American Indian/Alaska Native, and Hispanic populations

# Poverty is Associated with Firearm Homicide

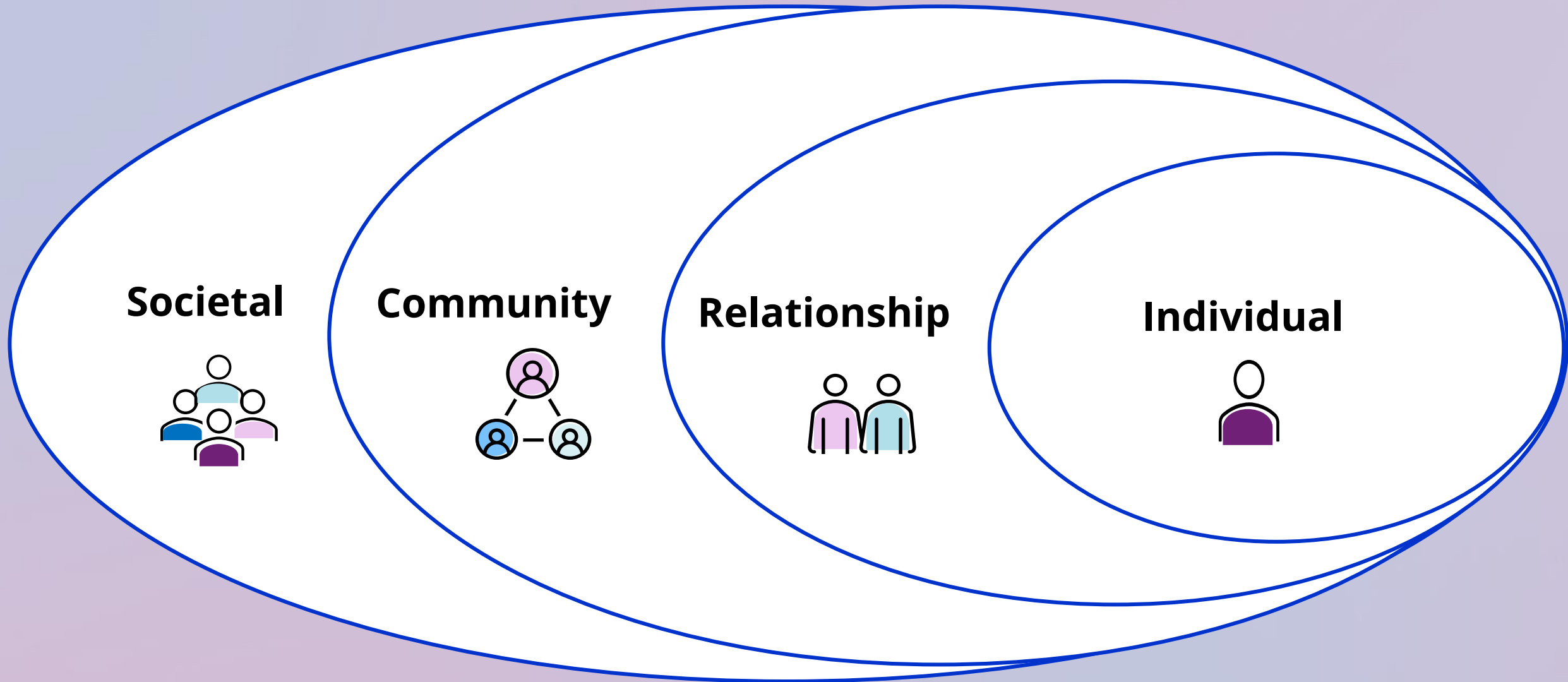
---

In 2020, counties with the highest poverty level had firearm homicide rates **4.5 times** as high as counties with the lowest poverty level.

[bit.ly/CDC-Vital-Signs](https://bit.ly/CDC-Vital-Signs)



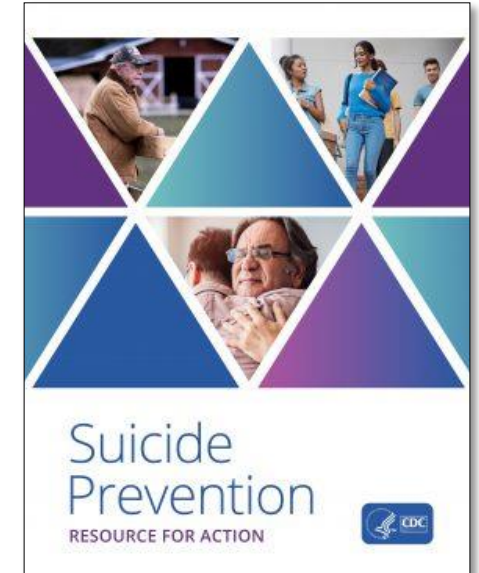
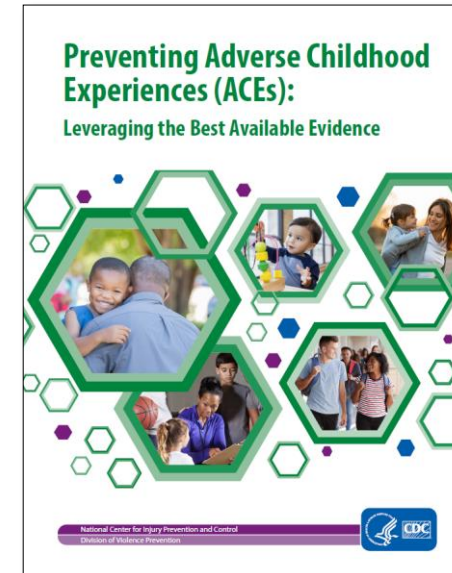
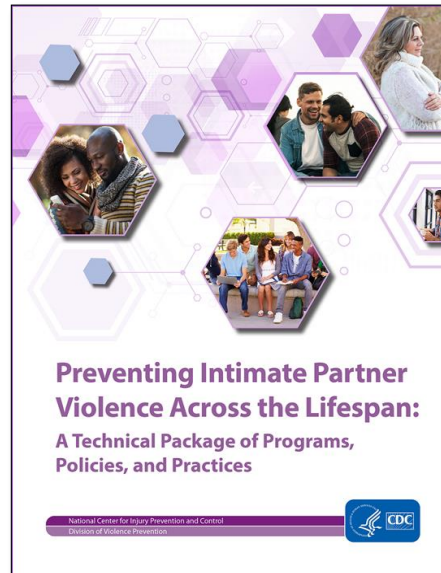
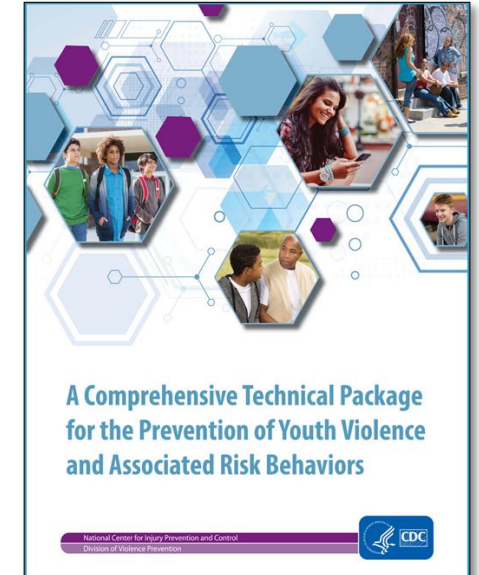
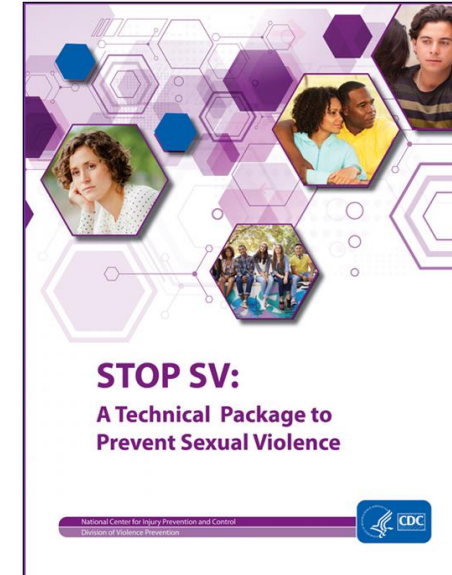
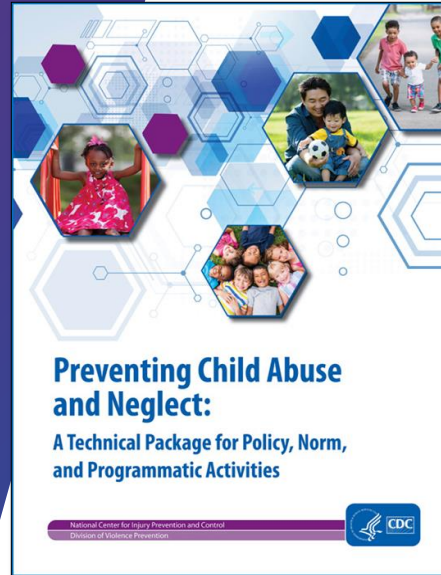
# The Social Ecological Model



# CDC's *Resources for Action:* Violence and Suicide Prevention



[bit.ly/CDC-Tech-Packages](https://bit.ly/CDC-Tech-Packages)





# Community Violence Prevention Resource for Action



- Centering communities
- Emphasizing drivers of inequities
- Addressing harmful narratives
- Updating existing examples
- Adding new examples

***Imagine you are in a community that is safe and welcoming for everyone – what would that look like?***

***"Growing up in the community, communities experience brutal and extreme violence—members adopt a survival mode mentality. Behavior becomes survival and not a choice. Decision makers do not understand the root causes of violence."***

**Participant,  
CV listening session**







**Address the  
underlying  
conditions that  
contribute to  
violence and  
inequities**

+ Economic and  
household  
security



**Address the locations  
associated with the  
greatest risk**

+Environmental design  
+Safe Passages





# Help people experiencing the greatest risk

- + Community outreach programs
- + Hospital-based violence prevention programs

# Thank you!

Violence Prevention Resources for  
Action



*The findings and conclusions in this presentation are those of the author and do not necessarily represent the official position of the Centers for Disease Control and Prevention.*