



Achieving Equity in Obesity through Community/Public Health Approaches: Examples from Native American Communities

Presented at the Health Equity Approach to Obesity Efforts Workshop

April 1, 2019

The National Academy of Sciences Building

Valarie Blue Bird Jernigan, DrPH, MPH

Director, Center for Indigenous Health Research and Policy

Oklahoma State University

bluebird.jernigan@okstate.edu

Acknowledgements



Institute of Medicine

Choctaw Nation of Oklahoma

Chickasaw Nation

Osage Nation

THRIVE (NHLBI Grant# R01HL117729)

FRESH (NIMHD Grant #MD011266)



Studies funded through “Interventions for Health Promotion and Disease Prevention in Native American Populations”



Yakoke to our partners for making this work possible!

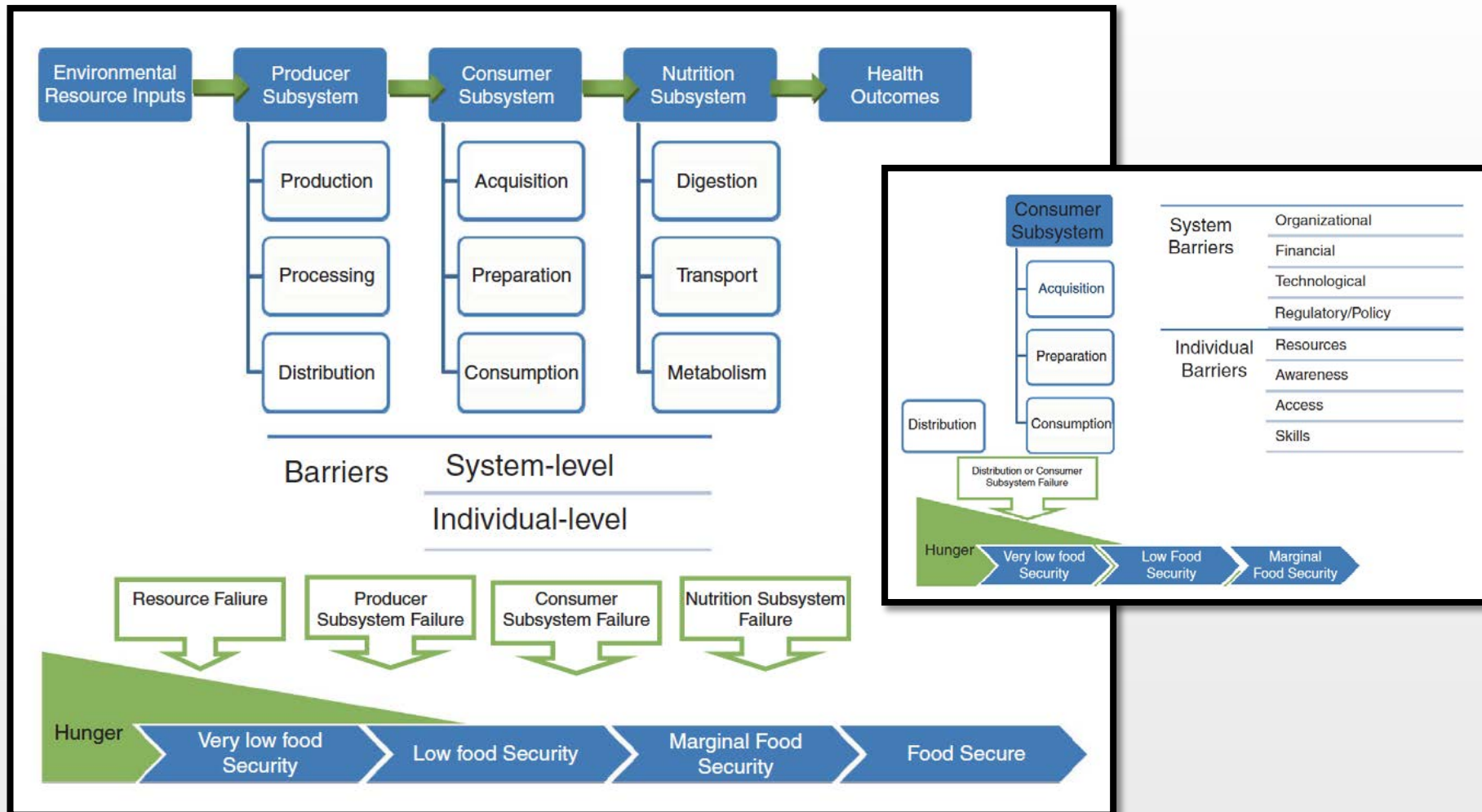


Participatory Research and Policy Work

- **Participatory intervention research** – research for action and social change
- **PSE:** We focus on identifying and leveraging systems, creating environmental/structural/policy changes
- Primarily in the area of food environments and food systems



Conceptual model of food system and food security (Rutten 2011)



Rutten, L. F., Yaroch, A. L., & Story, M. (2011). Food systems and food security: a conceptual model for identifying food system deficiencies. *Journal of Hunger & Environmental Nutrition*, 6(3), 239-246.

THRIVE Study Overview

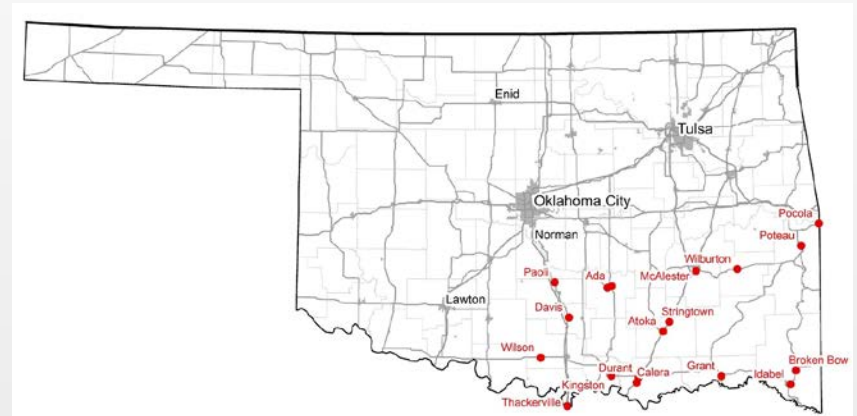
Study purpose—to improve tribal food environments in Chickasaw and Choctaw Nations by implementing “healthy makeovers” in tribal convenience stores



Choctaw Travel Plaza, Broken Bow, OK



Chickasaw Travel Stop, Ada, OK





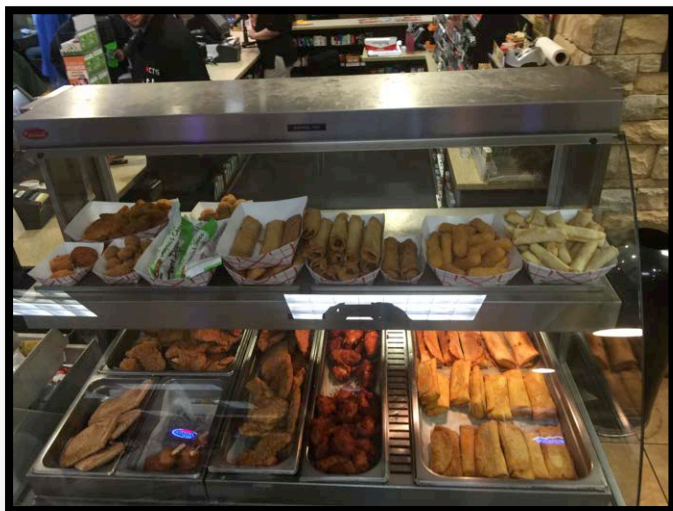
Participatory research methods

- **Study Design:** a cluster control trial with 8 stores
 - 2 stores/tribe assigned to implement intervention (4 total)
 - 2 stores/tribe assigned as control (4 total)
 - Longitudinal cohort study – surveyed 1637 Native shoppers before and after the interventions
- **Primary Outcomes:**
 - Store level: changes in fruit and vegetable availability (*measured by store inventory, sales receipts, and nutrition environment measures scores*)
 - Individual-level: changes in perceived food environments and intake of fruit and vegetables (*measured by self-report questionnaires*)
- **Strategies:** guided by IOM - product, placement, promotion, and pricing,¹ adapted and localized for Native stores

¹Institute of Medicine. Committee on Prevention of Obesity in Children and Youth : Koplan JP, Liverman CT, Kraak VI, editors., Preventing Childhood Obesity: Health in the Balance. Washington, DC: National Academies Press; 2005



First step – what is currently available; what is possible?²

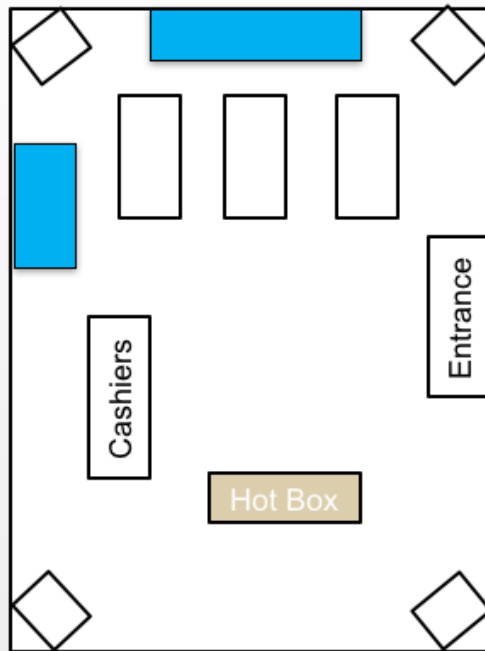


²Wetherill, M. S., Williams, M. B., Taniguchi, T., et al. (2018). A nutrition environment measure to assess tribal convenience stores: the THRIVE study. *Health Promotion Practice*, 1524839918800968.

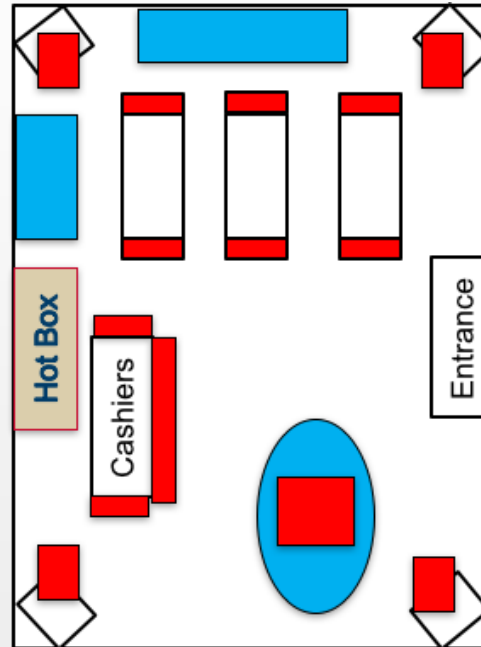
Specific Intervention Strategies: Products






Specific Intervention Strategies: Placement



a. Store layout before intervention



b. Store layout after intervention

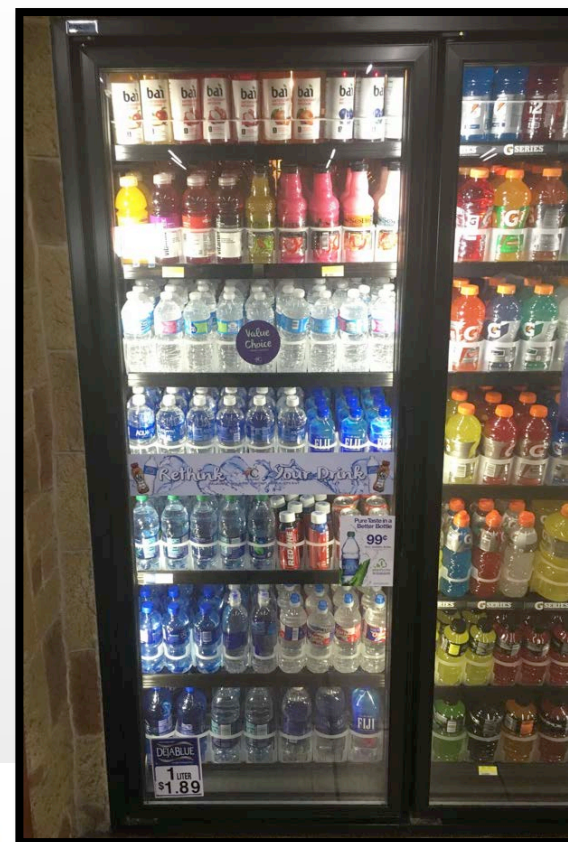
 Packaged foods  Refrigeration unit  Intervention foods

Shelf planogram





Specific Intervention Strategies: Promotion



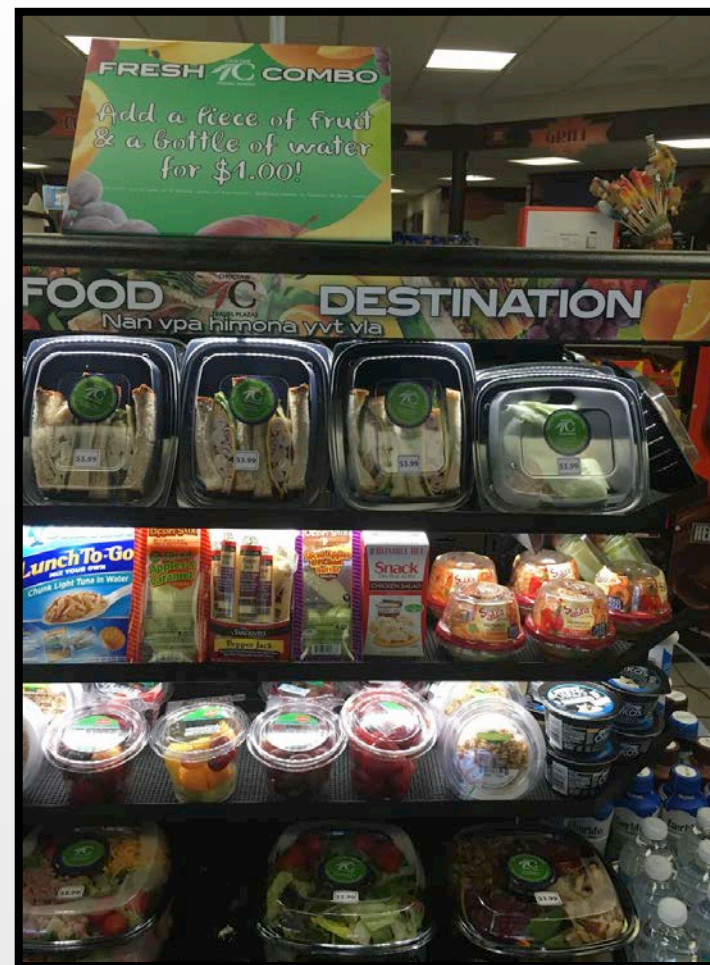


Specific Intervention Strategies: Promotion





Specific Intervention Strategies: Pricing





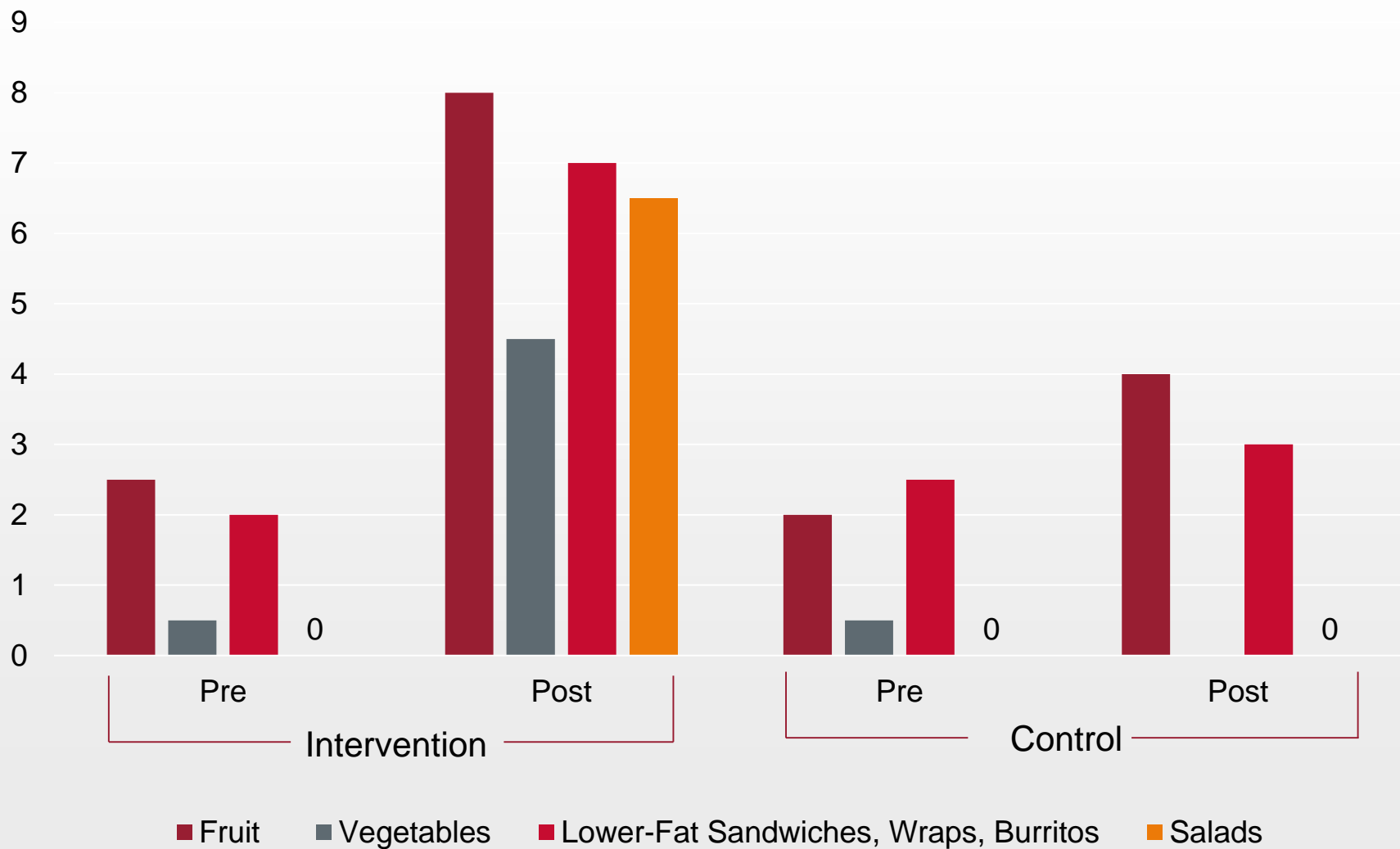
Study Outcomes

- THRIVE improved objective and perceived measures of tribal food environments³
- Led to changes in purchasing behavior among shoppers
- Study resulted in widespread changes to types of foods vendors offered in both Nations, significantly impacting all tribal programs

³Bird Jernigan, V. B., Salvatore, A. L., Williams, M., et al. (2019). A Healthy Retail Intervention in Native American Convenience Stores: The THRIVE Community-Based Participatory Research Study. *American Journal of Public Health*, 109(1), 132-139.

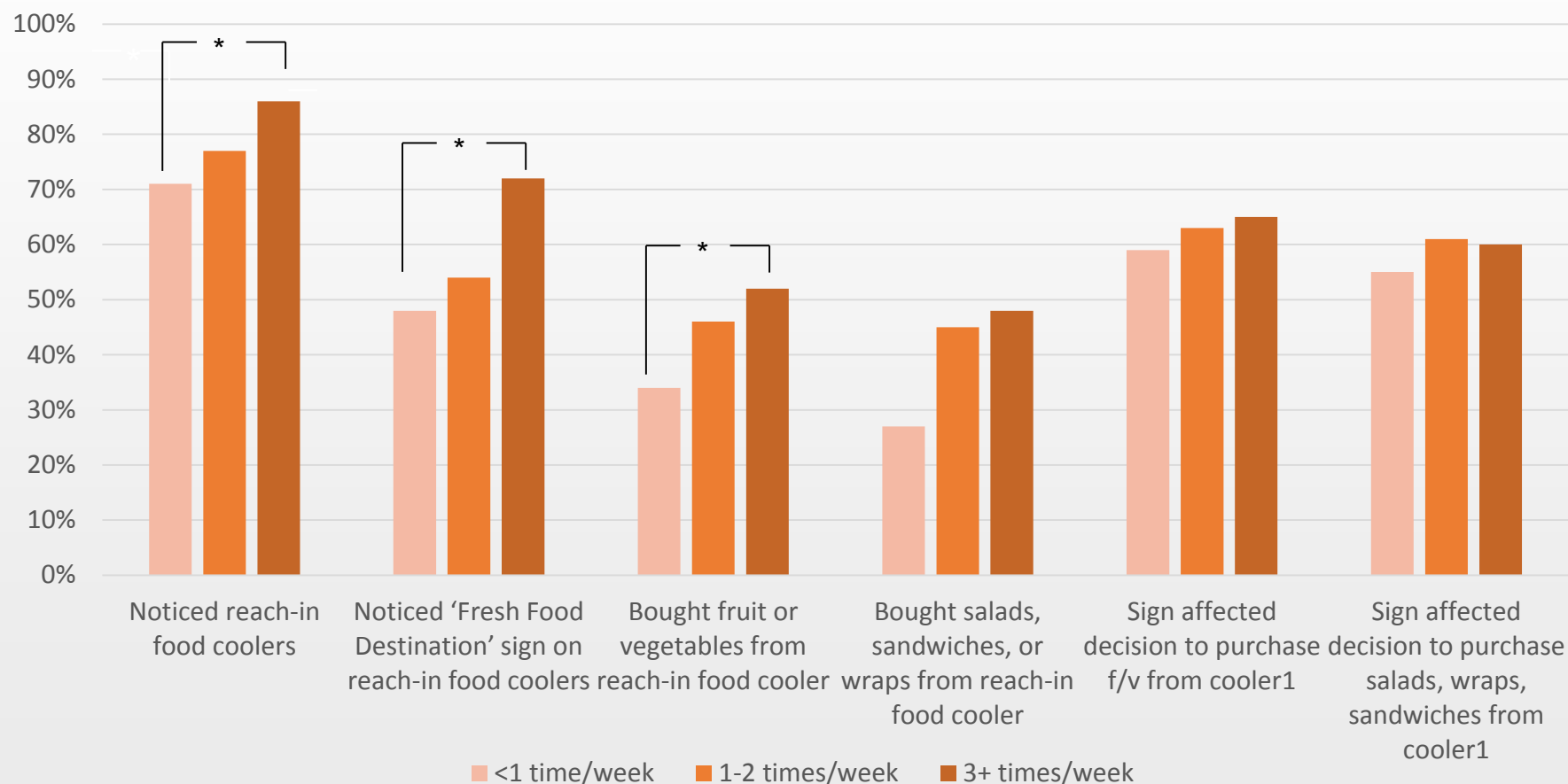


Store Food Availability,* Pre-Post Intervention, Nation B (n=4)



*Measured by NEMS score

Trend analysis: purchasing fruits and vegetables





Challenges, Opportunities, Next Steps

- Structural, policy change takes time
- Need to work with diverse sectors within Native communities and with non-Native communities, to address the social/policy determinants of health
- Climate change threatens indigenous lands and foods
- Equip tribal leadership with information they need to align economic, environmental, and health agendas
- Community members and researchers can work together to advocate for change, use data to leverage power
- Move from survival to thriving