

The Intersection of Structural Racism and Obesity

Dr. Stephanie A. Silvera

Montclair State University

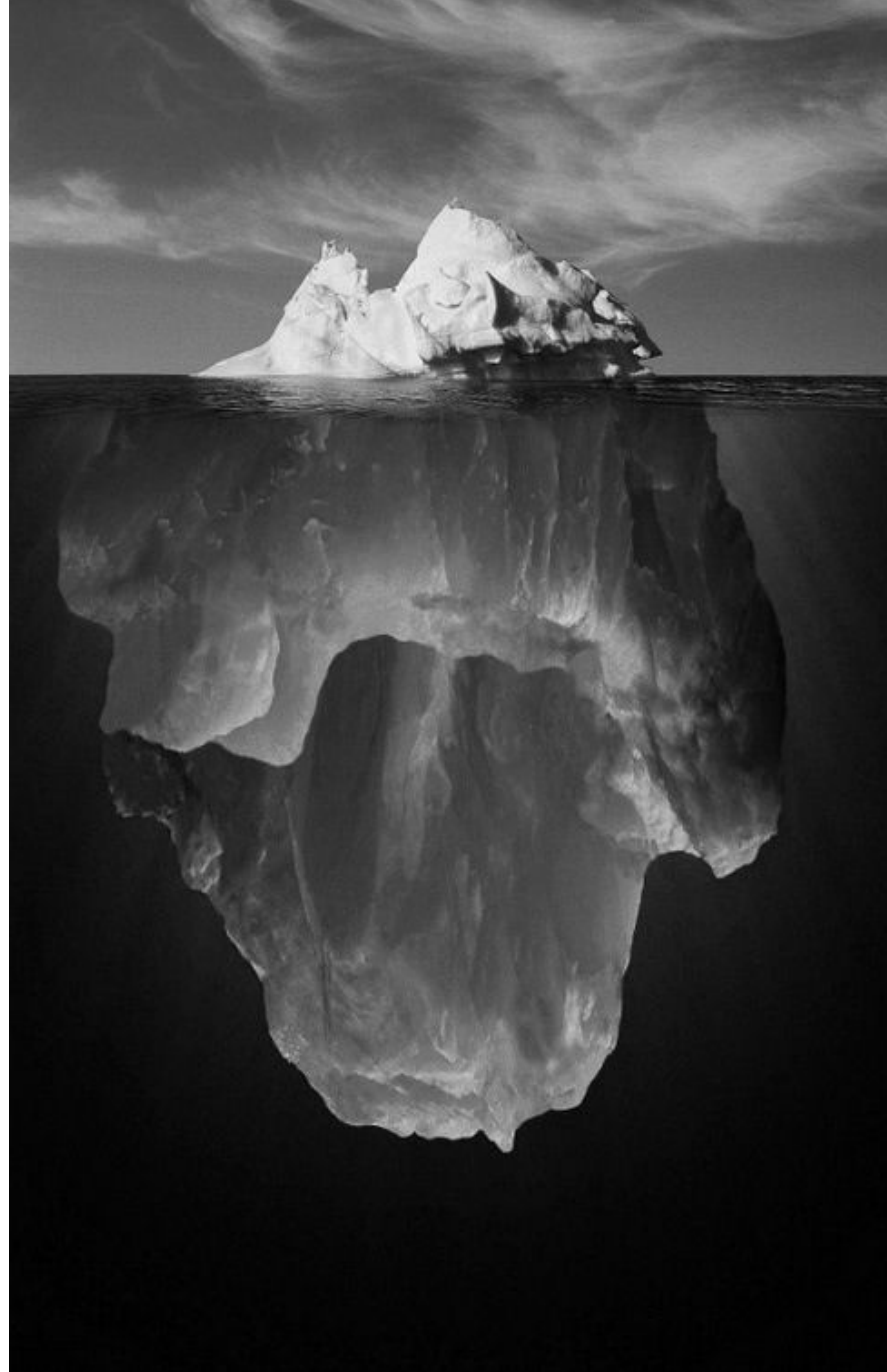
Department of Public Health

Presenter Disclosures

The following personal financial relationships with commercial interests relevant to this presentation existed during the past 12 months:

No relationships to disclose

**Racism Provides the
Social And Institutional
Framework For How We
Live, Eat, and Die.**



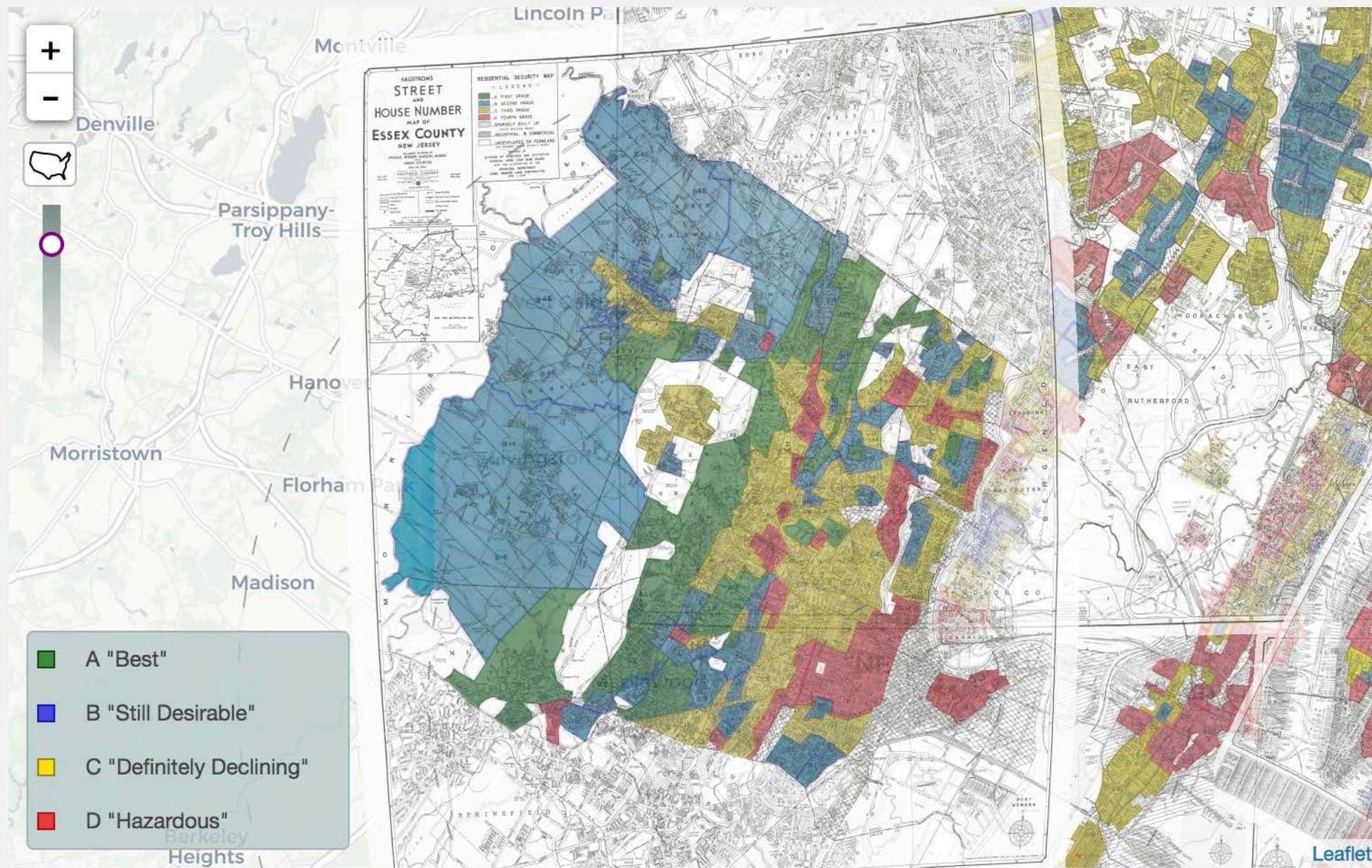
Institutionalized Racism in Housing and Education

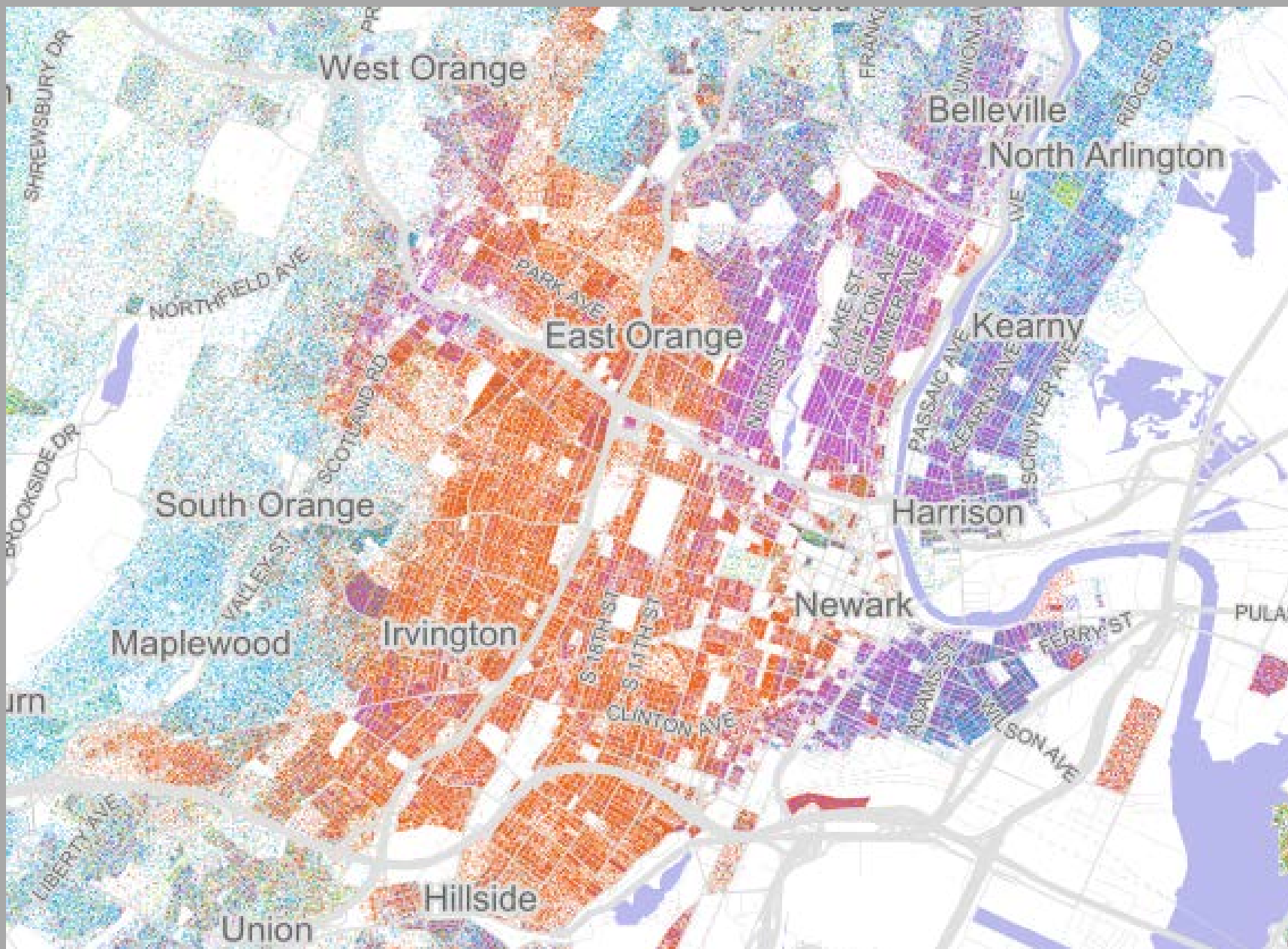


HELP THE WHITE PEOPLE
To Keep This District WHITE
MEN NEEDED
TO KEEP OUR LINES SOLID
COME TO NEVADA and FENLON
Sunday and Monday
WE NEED HELP
Don't BE YELLOW COME OUT
We Need Every WHITE MAN
WE WANT OUR GIRLS TO WALK ON THE STREET NOT RAPE

Photo credit: Missouri History Museum Library and Research Center

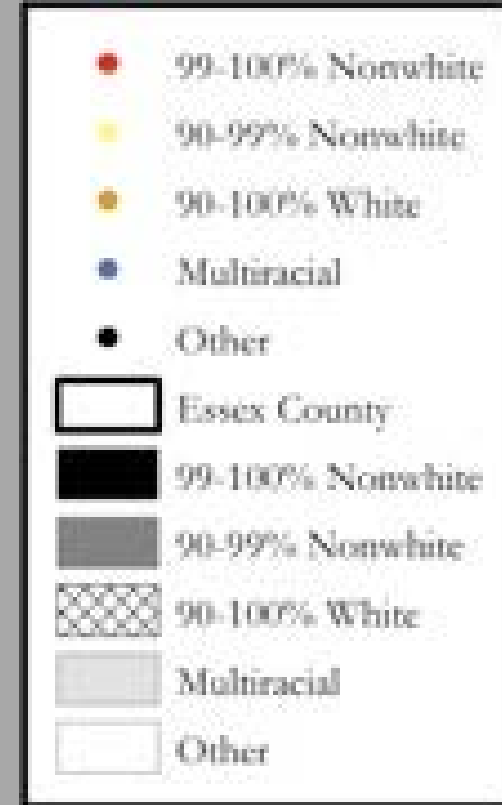
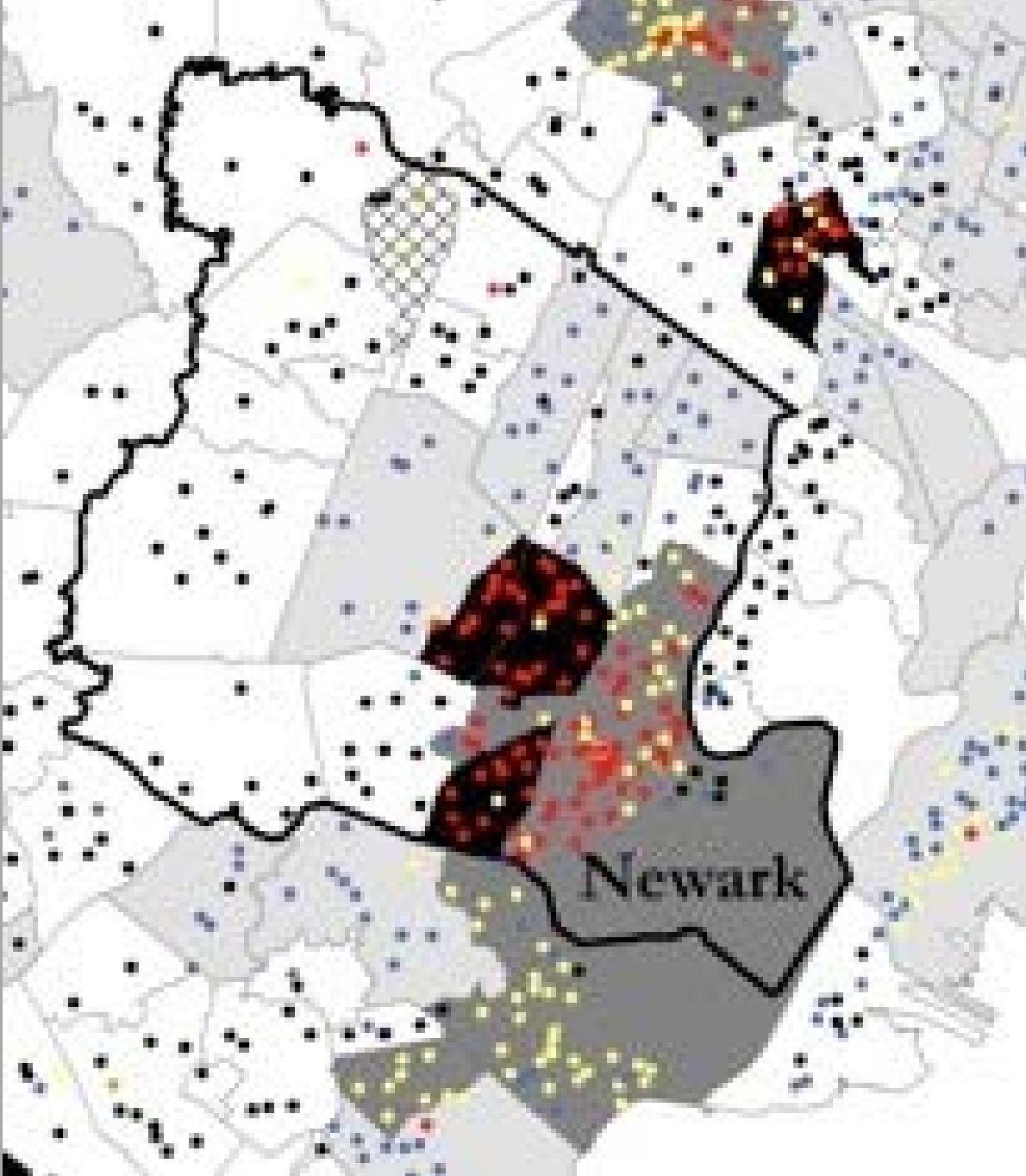
Montclair State University





Key:
 Blue = White
 Orange = Black
 Green = Asian
 Purple = Hispanic

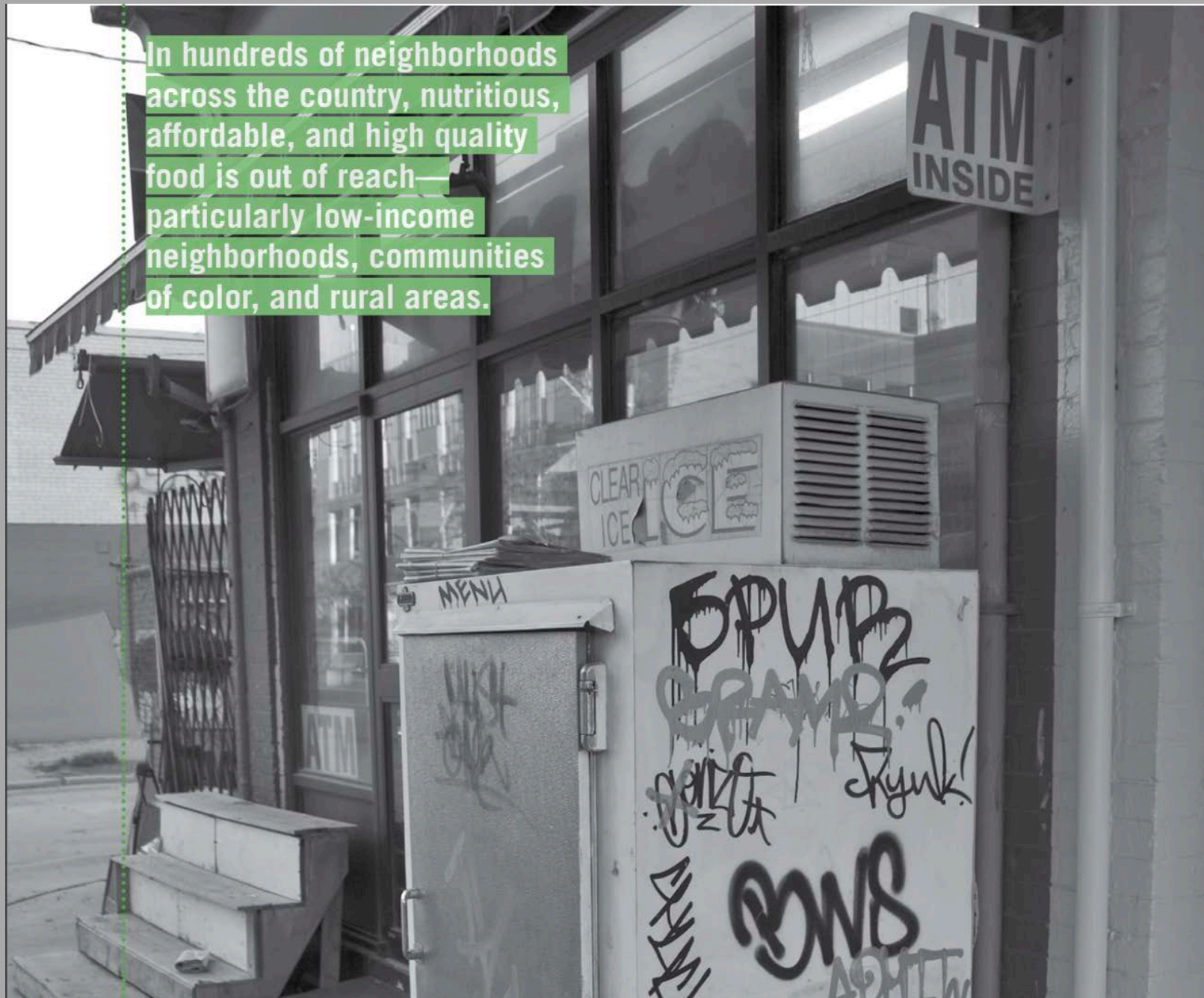
Source: https://www.nj.com/news/2015/10/this_map_shows_a_racial_breakdown_of_every_person.html



Source: State of New Jersey Department of Education, 2015-16 Enrollment Data; NJ Office of Information Technology (NJOIT), Office of Geographic Information System (OGIS).

Why does this matter?

In hundreds of neighborhoods across the country, nutritious, affordable, and high quality food is out of reach—particularly low-income neighborhoods, communities of color, and rural areas.



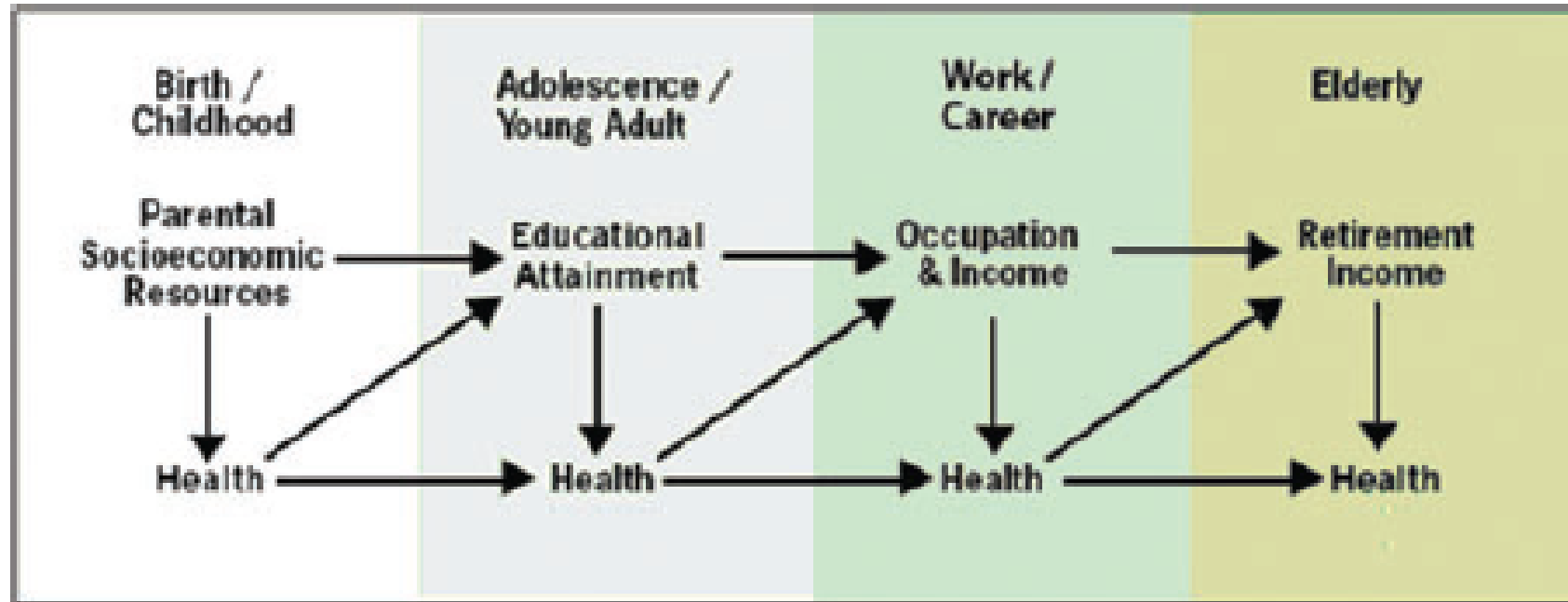


Figure 1. The dynamic and reciprocal relationships between SES and health through the life-course. (Source: Adler, N.E., Stewart, J., and members of the MacArthur Network on SES and Health. 2008. *Reaching for a Healthier Life. Facts on Socioeconomic Status and Health in the U.S.* University of California, San Francisco. Accessed at: <http://www.macses.ucsf.edu/News/Reaching%20for%20a%20Healthier%20Life.pdf>)